

50 RISING STARS 2026

Celebrating emerging geospatial leaders driving innovation, impact, and inclusivity—shaping the future of our industry and inspiring global collaboration.



Rising Star

50 RISING STARS 2026

FOREWORD

It is both an honor and a profound privilege to present the Geospatial World **50 Rising Stars – 2026**, a remarkable group of young leaders whose ideas, and determination are shaping the next chapter of the global geospatial movement.

As our world confronts complex challenges, from climate resilience and infrastructure transformation to digital sovereignty and sustainable development, the role of geospatial intelligence has never been more consequential. The Rising Stars initiative, now in its sixth year, reflects our enduring commitment to recognizing those who are not only advancing technology, but redefining its purpose and impact.

This year's honorees exemplify a rare combination of technical mastery and strategic foresight. They are integrating spatial systems with AI and advanced analytics, modernizing data ecosystems, and building solutions that are scalable, inclusive, and future-ready. Beyond innovation, they are cultivating collaboration, bridging disciplines, sectors, and geographies to deliver measurable outcomes for society.

The Rising Stars program is more than a recognition platform; it is a catalyst for global connection. By bringing together emerging leaders from across the world, we are nurturing a community that will influence policy, industry, research, and entrepreneurship for years to come.

To the 50 Rising Stars of 2026: you represent the confidence, creativity, and courage that define the future of our profession. Your achievements inspire optimism and reaffirm the transformative power of geospatial knowledge.

On behalf of **Geospatial World**, I extend my heartfelt congratulations and look forward to your continued leadership in shaping a smarter, more resilient world.

Annu Negi
President – GW Events
Geospatial World

HERE'S THE LIST OF 50 RISING STARS TO LOOK OUT FOR IN 2026

| | | | | | |
|--------------------------|----|------------------------|----|-----------------------------|----|
| Abdourahmane Tahir | 3 | Dr. Ivan Bamweyana | 11 | Olga Tambazidis | 20 |
| Aman Chaudhary | 3 | Dr. Jessie Jane Khaki | 12 | Oluwatosin Oluyemisi Ayo | 20 |
| Amany Mohamed Dyab | 4 | Jimeng Shi | 12 | Pandiyan Kesavan | 21 |
| Angel M. Davila T. | 4 | Johannes Van Geertsom | 13 | Pawan Muddu | 21 |
| Anand Sebastian | 5 | Jyoti Rohodia | 13 | Pratiksha chalke | 22 |
| Dr. Anna Shcherbacheva | 5 | Kamil Raczycski | 14 | Rachel Balestrieri | 22 |
| Bibian Nyaeru Robert | 6 | Karolina Lehotska | 14 | Rafaela Almeida de Carvalho | 23 |
| Boddepalli Navjoth | 6 | Katie Grillo | 15 | Rahul Chakraborty | 23 |
| Caitlin Ballard | 7 | Katie Decker | 15 | Ren Uechi | 24 |
| Chaz Mateer | 7 | Lauren Regiec | 16 | Dr. Santanu Roy | 24 |
| Dariusz Tanajewski | 8 | Leigh-Anne McKnight | 16 | Sheryl Rose Reyes, PhD | 25 |
| Dolores Leneuoti | 8 | Lukumon Olaitan Lateef | 17 | Sirelda Bele | 25 |
| Elena Field | 9 | Melese Getenet | 17 | Suvi-Tuulia Haakana | 26 |
| Emmanuel Ayodele Jolaiya | 9 | Michael Jurua | 18 | Thiagarajan Krishnamurthy | 26 |
| Greta Forbes | 10 | Mmasechaba Moropane | 18 | Vamshi Karanam | 27 |
| Hannah Walters | 10 | Mohamad Alnasser | 19 | Victor Wanderi Wahome | 27 |
| Dr. Harsh Shah | 11 | Nirdesh Kumar Sharma | 19 | | |



Abdourahmane Tahir

Head of Digital Services, Applus, Saudi Arabia

Abdourahmane is Head of Digital Services at Applus, leading geospatial and digital transformation across Asia, the Middle East, and Africa. He specializes in integrating LiDAR, GIS, BIM, reality capture, and Digital Twin technologies to drive asset management, operational efficiency, and sustainability. Abdourahmane has led landmark digitization projects for clients like Aramco, SABIC, SWCC, and the King Abdullah Financial District, harmonizing complex geospatial data into interoperable digital models. His expertise bridges technology, infrastructure, and strategy, enabling smarter cities, safer industries, and data-driven decision-making aligned with initiatives such as Saudi Arabia's Vision 2030.



Aman Chaudhary

Geospatial Solutions Developer, Consultant, Global Water Informatics, The World Bank, India

Aman Chaudhary is a Geospatial Solutions Developer with the World Bank's Global Water Informatics team. His work focuses on designing data-driven geospatial platforms that integrate Earth observation, artificial intelligence, and cloud technologies to support water accounting and irrigation performance monitoring. His work focuses on translating complex geospatial data into actionable insights, supporting informed decisions on water allocation, agricultural productivity, and climate resilience.



Amany Mohamed Dyab

Database Engineer, HERE Technologies, Egypt

Amany is a Database Engineer at HERE Technologies, Egypt, specializing in geospatial data governance, validation, and management for navigation, logistics, and smart city applications. She is also a French-speaking GIS trainer with Esri North Africa, mentoring professionals to apply spatial thinking for real-world impact. Passionate about digital transformation and empowering women in tech, Amany serves as Vice Chair of the Digital Transformation and Cybersecurity Community at the Leaders Foundation and as a mentor with Women in Geospatial+, fostering the next generation of STEM leaders. Her work combines technical expertise, education, and advocacy to create smarter, safer, and more equitable solutions.



Angel M. Davila T.

Secretary General, National Land Administration Authority (ANATI), Government of Panama, Panama

Angel is a rising leader in Panama's public sector and Secretary General of the National Land Administration Authority (ANATI), recognized for modernizing national geospatial data coordination to support development priorities. As Panama's UN-GGIM Head of Delegation, he has driven progress toward a national geospatial data policy that strengthens governance and evidence-based decision-making. In December 2025, he convened a major sub-regional UN-GGIM workshop with 12 Latin American countries, significantly elevating Panama's regional geospatial leadership through his strategic vision, collaboration, and commitment to sustainable development.



Anand Sebastian

Senior Scientist & Head, Geospatial Science and Technology Division, Integrated Rural Technology Centre (IRTC), Palakkad, India

Anand is Senior Scientist and Head of the Geospatial Science & Technology Division at the Integrated Rural Technology Centre (IRTC) in Kerala, India. He specializes in GIS, remote sensing, and AI-driven environmental research, applying geospatial technologies to support sustainable development, climate adaptation, disaster risk reduction, and biodiversity conservation. Under his leadership, the division drives Panchayat-level carbon neutrality projects, climate-resilient landscape modeling, and evidence-based local planning. Anand is also a dedicated educator and mentor, leading training and capacity-building programs that promote geospatial literacy and inspire the next generation of geospatial leaders.



Dr. Anna Shcherbacheva

R&D And AI Developer, Terrasolid Ltd., Finland

Anna is a rising geospatial AI leader and Algorithm Developer at Terrasolid Ltd., specializing in machine learning for LiDAR and 3D point-cloud processing. With a PhD in Applied Mathematics and experience at the Finnish Geospatial Research Institute and the University of Helsinki, she is recognized for impactful work in forest remote sensing, tree species classification, and LiDAR time-series analysis. Her award-winning research and expertise in LiDAR analytics, deep learning, and statistical modeling advance AI-driven environmental monitoring.



Bibian Nyaeru Robert

Geospatial Consultant, UNFPA, East And Southern Africa Regional Office (ESARO), KENYA

Bibian is a spatial data scientist specializing in the application of geospatial analytics to inform policy, guide targeted interventions, and improve population health outcomes. She previously worked as a GIS Research Assistant at KEMRI-Wellcome Trust, where her work focused on disease risk mapping, climate change vulnerability assessment, health data quality evaluation, and the analysis of healthcare service utilization. With over five years of experience across research and industry, including roles at KALRO and Geodev Kenya, she brings expertise in GIS, remote sensing, machine learning, and field-based data collection. Her work integrates spatial data and health information systems to generate evidence that supports data-driven decision-making in public health. Bibian holds a master's degree in Spatial Data Science from Pennsylvania State University and is passionate about applying geospatial innovation to strengthen sustainable and climate-resilient health systems and advance global health equity.



Boddepalli Navjoth

**Senior Geospatial Data Scientist
Garudalytics Private Limited, India**

Boddepalli is a Senior Geospatial Data Scientist at Garudalytics Pvt. Ltd., India, specializing in GeoAI, spatial intelligence, and smart city solutions. He has led high-impact projects across governance, defense, agriculture, and urban planning, including the Punjab State Spatial Data Infrastructure, AI-driven crop monitoring systems, and a Smart City Urban Observatory with UNDP. His work also explores voice-based AI GIS platforms to make spatial analysis more accessible. Recognized with the Esri India Young Scholar Award and other honors, Boddepalli combines academic research and industry innovation to advance GeoAI-enabled infrastructure and democratize geospatial intelligence.



Caitlin Ballard

**International Senior Policy Advisor
Government Digital Service, UK**

Caitlin works as a International Senior Policy Advisor with the UK Government Digital Service. She has played a transformative role in connecting the UK geospatial community through the creation of the cross-government International Geospatial Network, enabling knowledge sharing, aligned priorities, and coordinated global engagement. Her expertise in international collaboration, geospatial policy, and strategic networking has strengthened the UK's leadership in climate, environment, and resilience initiatives, delivering impactful geospatial capacity development and support to countries worldwide.



Chaz Mateer

Solution Architect, Timmons Group, USA

Chaz is a certified GIS Professional (GISP) and Solutions Architect at Timmons Group with over 10 years of experience across the private and public sectors. He specializes in geospatial analysis using ESRI and open-source GIS, Python programming, and innovative GIS data management. With a B.S. in Environmental Studies, a GIS certificate focused on Defense and Intelligence, and a Master of Liberal Arts in Information Management Systems from Harvard Extension, he bridges environmental expertise with advanced information technology to drive impactful geospatial solutions.



Dariusz Tanajewski

Principal Geospatial Data Scientist, TerraEye, Poland

Dariusz is a geospatial data science leader and Principal Geospatial Data Scientist at TerraEye, where he has led the development of geospatial intelligence solutions supporting the mining industry throughout the project lifecycle, from exploration to reclamation. With over 14 years of experience in geospatial data science, including more than four years focused specifically on Earth Observation, he bridges EO science with industrial deployment. He has contributed to projects funded by the European Space Agency, the European Commission, and Poland's National Centre for Research and Development, and worked on solutions later adopted by a major global resource group. His work focuses on integrating multisensor data and applying advanced geospatial analytics and machine learning to mineral exploration and geological interpretation.



Dolores Leneuoti

Chief Land Management Officer, Department Of Lands And Survey (LSD), Government Of Tuvalu, Tuvalu

Dolores is the Chief Land Management Officer at the Department of Lands and Survey, Government of Tuvalu. She leads national efforts in land administration, spatial planning, and sustainable land management, leveraging GIS and geospatial technologies to optimize land use and support policy decisions. With expertise in land governance, cadastral management, and geospatial data integration, Dolores plays a key role in advancing Tuvalu's capacity for evidence-based planning, climate resilience, and sustainable development.



Elena Field

GIS and Web Mapping Specialist, British Antarctic Survey, UK

Elena is a GIS and Web Mapping Specialist at the British Antarctic Survey, with extensive experience supporting operations in Antarctica. She specializes in geospatial analysis, web mapping, and data-driven decision support in high-pressure, remote environments, enhancing efficiency, safety, and situational awareness. Fluent in English, French, and Italian, Elena combines technical expertise with clear communication, leveraging her MSc in Geoinformation Technology and Cartography and BSc in Geology to deliver actionable insights in challenging field conditions.



Emmanuel Ayodele Jolaiya

Founder & CEO, Spatialnode Inc., Geospatial Engineer, Spatialnode Inc.; United Nations Global Service Centre (UNGSC) Spain

Emmanuel is a GIS Consultant and Founder of Spatialnode, consulting for the UN Global Service Centre in Spain. He specializes in building geospatial and full-stack software, leading teams, and automating workflows to turn complex data into actionable insights. With expertise in geospatial analysis, software development, and project delivery from concept to deployment, he combines technical innovation with a keen eye for design and detail to create impactful solutions for real-world challenges.



Greta Forbes

Senior GIS Analyst, TRC Companies, USA

Greta is a Senior GIS Analyst at TRC Companies in the United States, recognized for leveraging geospatial data to support smarter infrastructure and environmental decisions. With strong technical expertise in GIS and a practical, solutions-oriented approach, Greta delivers insights that improve planning, analysis, and project outcomes. Her ability to translate complex spatial data into actionable intelligence positions her as a rising star in the GIS and infrastructure field.



Hannah Walters

GIS Analyst, Denver Water, USA

Hannah Walters is a GIS Analyst at Denver Water in the United States, where she applies geospatial analysis to support water resource management and infrastructure planning. Skilled in GIS, spatial data visualization, and data-driven decision-making, she transforms complex datasets into actionable insights that enhance operational efficiency and resource sustainability. Her work demonstrates the vital role of geospatial technology in managing essential public services.



Dr. Harsh Shah

Founder & CEO, AgroCast Analytics Pvt Ltd, India

Harsh is the Founder and CEO of AgroCast Analytics Pvt Ltd in India, leading innovations at the intersection of agriculture, water, and climate change. He specializes in geospatial analytics, climate risk assessment, and precision farming, developing tools and apps that provide real-time insights on crop growth, soil moisture, and crop health. His work empowers farmers, guides government and private-sector projects, and promotes climate-resilient practices. Recognized for innovation with accolades such as the Srujan Grant, Dr. Shah combines technical expertise with strategic leadership to drive sustainable agriculture and water management solutions.



Dr. Ivan Bamweyana

**Lecturer/ Geospatial Data Science & Earth Observation
Makerere University, Uganda**

Ivan is a Lecturer in Geospatial Data Science and Earth Observation at Makerere University, Uganda, pioneering the integration of AI and space technology in geospatial science. He specializes in transforming complex spatial data into actionable intelligence, developing tech-driven solutions, and advancing smart automation to unlock next-generation insights. Known for precision, innovation, and collaborative problem-solving, Ivan is shaping the future of geospatial intelligence in research, education, and applied solutions.



Dr. Jessie Jane Khaki

Postdoctoral Research Associate, Malawi Liverpool Wellcome (MLW) Trust, Malawi

Jessie is a Postdoctoral Research Associate at the Malawi Liverpool Wellcome Trust, specializing in geostatistical mapping of diseases to guide decision-making in resource-constrained settings. Her expertise includes GIS, spatial epidemiology, and data visualization, with research spanning typhoid in Malawi, dengue in Nepal, and soil-transmitted helminths across Africa. Jessie translates complex data into interactive dashboards for policymakers and has received recognition from the Commonwealth Scholarship Commission and Schlumberger Foundation. Beyond research, she mentors emerging scientists and co-founded Malawi Girls in STEM, fostering the next generation of women applying geospatial science to public health.



Jimeng Shi

**Postdoctoral Research Associate
University of Illinois Urbana-Champaign, USA**

Jimeng works as a geospatial AI and a Postdoctoral Research Associate at the University of Illinois Urbana-Champaign, where he develops cutting-edge AI methods to tackle critical challenges in Earth and natural sciences. His work spans flood forecasting and mitigation, global weather prediction using diffusion models, water-level time series foundation models, and retrieval-augmented generation to enhance scientific question-answering with large language models. With publications in top-tier venues including AAAI, IJCAI, ICML, NeurIPS workshops, and Nature Machine Intelligence, and recognition such as the 2024 Momentum Research Fellowship from Columbia University, his expertise lies at the intersection of geospatial AI, deep learning, climate and hydrological modeling, and real-world decision support.



Johannes Van Geertsom

Coordinator International, National Geographic Institute, Belgium

Johannes is the International Coordinator at the National Geographic Institute in Belgium, where he leads cross-border initiatives and fosters collaboration in geospatial science and mapping. With expertise in GIS, remote sensing, and spatial data management, he drives projects that advance geospatial research, support policy-making, and strengthen international partnerships. His work highlights the role of geospatial technologies in addressing global challenges and promoting data-driven decision-making.



Jyoti Rohodia

Lead GIS Engineer, Boskalis, UAE

Jyoti is Lead GIS Engineer at Boskalis, UAE, specializing in GIS, BIM, LiDAR, and the integration of AI and geospatial technologies. An Esri-certified professional with 10 years of experience, she manages GIS operations across Africa, Asia, and Oceania, driving innovative solutions for offshore energy and engineering projects. Jyoti's expertise spans ArcGIS Desktop, Online, and Enterprise, geospatial analytics, and AI-driven applications, with a proven track record delivering solutions to thousands of clients globally. Her work bridges advanced geospatial technology with real-world engineering and environmental impact.



Kamil Raczycki

Senior Data Scientist, Kraina AI, Poland

Kamil is a Senior Data Scientist at Kraina AI, Poland, specializing in geospatial machine learning and OpenStreetMap (OSM) data. He develops Python tools and libraries—such as SRAI, QuackOSM, OvertureMaestro, and Bivario—that advance spatial AI, vector data modeling, and geospatial visualization. An active contributor to the open-source community, Kamil has presented at international conferences like EuroPython, PyData, and GeoPython. His research, including publications at SIGSPATIAL 2021 and 2023, focuses on geospatial AI, transfer learning, and innovative data-driven solutions for urban and transportation systems.



Karolina Lehotska

Customer Success Manager, EOX IT Services GmbH, Slovakia

Karolína is a Customer Success Manager at EOX IT Services GmbH in Slovakia and a seasoned GIS professional with over 13 years of experience. She empowers geospatial professionals worldwide through mentorship, content creation, and community engagement, helping them grow careers, build portfolios, and increase visibility in the GIS industry. With a global following of over 62,000 people, she curates job opportunities, shares practical guidance, and supports initiatives like the #30DayMapChallenge. A volunteer leader with Women+ in Geospatial, Karolína champions diversity and inclusion while fostering skill development and professional growth across the geospatial community.



Katie Grillo

GIS Web Technology Specialist, City of Cambridge, MA, USA

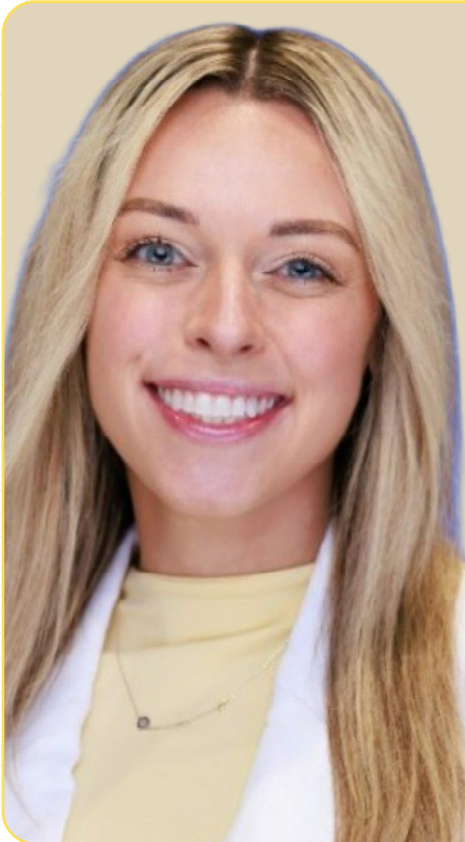
Katie is a GIS Web Technology Specialist for the City of Cambridge, MA, and a passionate advocate for using geospatial tools to empower communities. She specializes in Web GIS, digital mapping, and spatial storytelling, delivering training, workshops, and support to both GIS and non-GIS users. Katie is also a Web GIS instructor at the University of Richmond and a Geospatial Justice Facilitator with Trubel&Co. A dedicated community leader, she founded the Women in GIS Northeast Chapter and previously led the Northeast ArcGIS Users Group, fostering collaboration, mentorship, and opportunities for underrepresented voices in GIS.



Katie Decker

Senior Global Partner Manager, Esri Startup Program, Esri, USA

Katie embodies what it means to connect, innovate, inspire, and solve. She doesn't just manage relationships—she builds bridges that open opportunities across industries and geographies. Through her leadership, she gives founders more than access to tools; she equips them with the confidence and vision to see how GIS can transform their ideas into real-world impact. From my perspective, Katie has a rare ability to make complexity approachable. She inspires people to think bigger about what's possible with geospatial technology, while grounding that inspiration in practical steps that actually deliver results. Being part of a large organisation and network is a daunting reality for founders, but Katie acts as the perfect guide to connect the right people, solutions and entities.



carahsoft.

Lauren Regiec

Team Lead & Vertical Manager of Geospatial Autonomy and Robotics and Space Tech, Carahsoft Technology Corp., USA

Lauren is a seasoned professional with a strong background in IT and technology. She has been instrumental in leading Carahsoft's Geospatial, Autonomy & Robotics, and Space Technology verticals. Her expertise lies in crafting tailored go-to-market strategies and building robust channel programs, which have been crucial in accelerating growth and enabling impactful innovation across the public sector landscape. Lauren's commitment to emerging technologies and her focus on partner success have been key to Carahsoft's success in the government market.

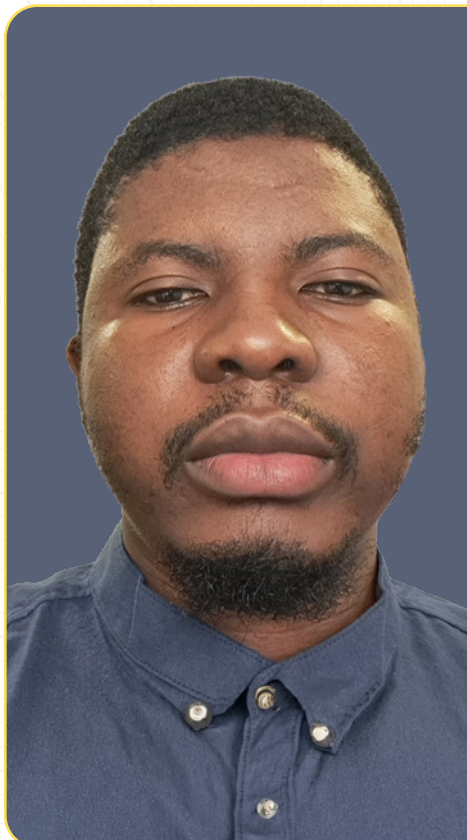


Deloitte.

Leigh-Anne McKnight

Co-Founder, UTILITX (Deloitte Canada), Canada

Leigh Anne McKnight is the Co-Founder of UTILITX, a Wonder by Deloitte business advancing infrastructure coordination. She brings planners, engineers, and asset owners together to reduce conflicts, improve safety, and accelerate delivery across complex capital programs. By embedding trust and spatial certainty at the core of her work, she supports confident, transparent, and defensible infrastructure decision-making.



satlat

Lukumon Olaitan Lateef

Geospatial Consultant, SATLAT Limited, Nigeria

Lukumon is a geospatial innovator using multi-source Earth Observation and geospatial intelligence to tackle environmental and socio-economic challenges across Africa. His expertise spans flood risk and damage assessment, oil pollution detection, land-use change analysis, and mapping farmer–herder conflicts in Nigeria. As founder of SATLAT Limited, he promotes capacity building in emerging geospatial technologies, training professionals and students while sharing insights through publications, blogs, and YouTube. Lukumon's work bridges research, policy, and practice, aiming to make geospatial innovation more inclusive, impactful, and transformative for the Global South.



Melese Getenet

Geospatial Researcher, Space Science and Geospatial Institute (SSGI), Ethiopia

Melese is a Geospatial Researcher at the Space Science and Geospatial Institute (SSGI) in Ethiopia, contributing to the country's geospatial development in alignment with the IGIF. He specializes in GIS, remote sensing, surveying, photogrammetry, and location-based services, leading research and developing standards, data management systems, and mapping tools critical to Ethiopia's NSDI. Melese's work strengthens geospatial capacity, promotes interoperability, and advances evidence-based decision-making, supporting urban planning, environmental monitoring, and resource management while fostering the growth of Ethiopia's geospatial ecosystem and international collaboration.



Michael Jurua

GIS Manager, Jane Goodall Institute Uganda, Uganda

Michael is the GIS Manager at the Jane Goodall Institute Uganda, where he applies geospatial science to conservation and community resilience. He specializes in GIS, remote sensing, Polarimetric SAR interferometry, and real-time monitoring using Survey123, high-resolution satellite imagery, and Esri dashboards. Michael has led groundbreaking initiatives, including geospatial-enabled chimpanzee censuses and deforestation monitoring, directly influencing policy and forest management. As East Africa Regional Ambassador for YouthMappers, he mentors young professionals in humanitarian mapping, and his work has earned international recognition, including the GEO Emerging Leader Award and UNDP Youth4Climate Award.



Mmasechaba Moropane

PhD & Research Assistant In Earth Sciences Department, University of The Western Cape, University Of The Western Cape, South Africa

Mmasechaba is a PhD researcher and Research Assistant in Earth Sciences at the University of the Western Cape, South Africa, specializing in geospatial analysis, big data, AI, and machine learning. She applies innovative approaches to address environmental and societal challenges, including mapping groundwater-dependent invasive plants and banana plantations across Africa. Recognized for her research excellence, Mmasechaba contributes to national and academic platforms, mentors students in advanced geospatial techniques, and supports sustainable land and water management through actionable insights. Her work bridges cutting-edge technology with real-world environmental impact.



Mohamad Alnasser

Geospatial Engineer, Greater Stockholm Geodata Council (Storsthlm's Geodataråd), Sweden

Mohamad is a Geospatial Engineer at Storsthlm's Geodataråd (Geodata Council of Stockholm County) in Sweden, specializing in surveying, GIS, photogrammetry, 3D modeling, GeoAI, and digital twins. Recognized as a LinkedIn Top GIS Voice 2024, he has contributed to record-setting projects, including the largest online aerial photo album, and supports smart decision-making through geospatial data in construction and regional development. Driven by technical innovation and knowledge sharing, Mohamad focuses on creating sustainable, data-driven solutions for multicultural and urban communities.



Nirdesh Kumar Sharma

CEO (EarthSense Labs)/PhD (IIT Delhi), Indian Institute of Technology Delhi, India

Nirdesh is the Founder and CEO of EarthSense Labs and a PhD graduate from IIT Delhi. He leads a pioneering geospatial AI company that is redefining how we understand and manage the planet. Under his leadership, EarthSense Labs is building a sovereign GIS super-platform that integrates AI-driven Digital Twins with LiDAR and satellite data to support resilient cities, infrastructure, and strategic decision-making. His expertise spans geospatial technology, artificial intelligence, and advanced remote sensing, driving innovation at the intersection of technology and sustainability.



Olga Tambazidis

Demographic Research And Planning Analyst, Los Angeles United School District, USA

Olga is a Demographic Research and Planning Analyst at the Los Angeles Unified School District, where she leverages data analysis and demographic research to support strategic planning and educational resource allocation. With expertise in population trends, data modeling, and visualization, she translates complex datasets into actionable insights that guide policy decisions and improve student outcomes. Her work underscores the critical role of data-driven planning in shaping equitable and effective education systems.



Jacobs

Oluwatosin Oluyemisi Ayo

**Survey/Geospatial Professional
Jacobs Engineering Group, Inc, USA**

Oluwatosin is a geospatial professional at Jacobs Engineering Group, Inc, where her research applies machine learning and computer vision to geospatial analysis for volcanic eruption studies and disaster mitigation. As a Graduate Research Assistant, she combines advanced geospatial technologies with AI-driven models to improve natural hazard monitoring and response. Her hands-on expertise spans terrestrial and mobile LiDAR scanning, UAV mapping, and geospatial data processing, with a strong focus on innovative, data-driven solutions for disaster management and sustainable development.



Pandiyan Kesavan

GIS Analyst/Developer, Waggoner Engineering Inc, USA

Pandiyan is a GIS Analyst/Developer at Waggoner Engineering Inc in the United States, with 11 years of experience designing and deploying innovative Geospatial and GeoAI solutions across civil infrastructure, water management, transportation, land use, and environmental projects. He specializes in geospatial database design, spatial modeling, Python automation, and translating complex GIS, Remote Sensing, LiDAR, and UAS data into actionable insights. A PMP- and Digital Data Analytics-certified professional, Pandiyan leads national and international projects from concept to delivery, combining technical mastery, strategic planning, and collaborative leadership to advance geospatial technology and AI-driven solutions.



Pawan Muddu

GIS Analyst & Marketing Executive, Drogo Drones, India

Pawan is a GIS Analyst and Marketing Executive at Drogo Drones in India, where he combines geospatial expertise with strategic communication to advance drone-based solutions. Skilled in GIS and spatial analysis, he supports data-driven decision-making while bridging technical insights with outreach and marketing efforts. His work highlights the growing role of geospatial technologies in innovative applications and the integration of analytics with real-world solutions.



Pratiksha chalke

Lead - GIS And Remote Sensing, Sustaina Greens LLP, India

Pratiksha is the Head of Remote Sensing and GIS at Sustaina Greens in India, bringing over seven years of experience in geospatial analysis. Passionate about uncovering the stories hidden within spatial data, she specializes in transforming complex geospatial information into actionable insights. Her work spans diverse applications—from environmental monitoring to urban planning—where she leverages GIS and remote sensing technologies to support sustainable decision-making and data-driven solutions.



Rachel Balestrieri

**Program Manager
General Dynamics Information Technology (GDIT)
USA**

Rachel is a Program Manager at General Dynamics Information Technology (GDIT) in the United States, where she leads complex projects and drives strategic initiatives in geospatial technology and information management. With expertise in program coordination, project execution, and cross-functional team leadership, she excels at translating technical solutions into actionable outcomes. Her work highlights the critical role of effective management in delivering innovative technology solutions.




Rafaela Almeida de Carvalho

GIS Coordinator, Votalia SA, Brazil

Rafaela is a GIS Coordinator at Votalia SA in Brazil, where she plays a key role in applying geospatial analysis to support renewable energy development. Through her work, she leverages GIS technologies to optimize spatial planning, improve decision-making, and support sustainable energy projects. Her expertise at the intersection of geospatial science and clean energy highlights the growing impact of GIS in driving the global energy transition.



Rahul Chakraborty

Director, Integrated Institute For Advanced Research and Information (IIARI) Pvt Ltd, India

Rahul is the Director of the Integrated Institute for Advanced Research and Information (IIARI) Pvt Ltd, India, specializing in GIS, remote sensing, UAV/drone applications, LiDAR, SAR, and AI-driven geospatial technologies. He has led over 25 GIS-based projects for government and non-government organizations, including topological mapping in Botswana and property tax register projects in India. A dedicated educator and mentor, Rahul has trained over 15,000 students, chaired 98+ workshops, and delivered lectures at national and international conferences. His expertise bridges geospatial technology, applied AI/ML, and skill development, fostering innovation and capacity-building across academia and industry.



Ren Uechi

CEO, Solafune, Inc., Japan

Ren, the CEO of Solafune, Inc., is a tech entrepreneur from Okinawa, Japan. He holds a degree in Applied Mathematics from the University of California, Berkeley, and has worked as a software engineer and data engineer in various startups. Uechi founded Solafune in 2020 with the mission "Hack The Planet" and has since developed satellite data analysis technologies. He has been recognized for his contributions in the healthcare and science category by Forbes, and his company has raised significant funding and achieved notable awards.



Dr. Santanu Roy

CEO, Dhineu Solutions Private Limited, India

Santanu is the CEO of Dhineu Solutions Private Limited in India, leading a deep-tech venture at the intersection of AI, GeoAI, and IoT. He specializes in building spatially intelligent, context-aware systems that transform data into actionable decision intelligence for businesses and society. Focused on innovation, scalability, and ethical technology, Santanu drives platforms that deliver measurable impact, collaborating with partners and experts to solve real-world challenges and advance connected, smart solutions.



Sheryl Rose Reyes, PhD

Remote Sensing Expert, United Nations Economic And Social Commission For Asia And The Pacific, Philippines

Sheryl is a Remote Sensing Expert at UNESCAP, where she co-leads SatGPT, an AI-powered disaster risk reduction tool integrating Earth observation, cloud computing, and artificial intelligence to support historical flood mapping across the Asia-Pacific region. With a PhD in Sustainability Science from the United Nations University and advanced training in remote sensing and geodetic engineering, her work bridges science, policy, and innovation to strengthen evidence-based decision-making for disaster resilience. A former President of the ISPRS Student Consortium, she is a passionate advocate for leveraging geospatial technologies and AI to democratize access to data, advance sustainability, and uplift underrepresented voices in the field.



Sirelda Bele

Director of Geoinformatization Directorate, Albanian Geological Survey, Albania

Sirelda Bele is a rising geospatial leader and Director of the Geoinformatization Directorate at the Albanian Geological Survey, with over five years of experience advancing national geoinformatics initiatives. She has played a key role in modernizing geospatial data management, integrating survey and mapping data, and strengthening decision-making for resource management and environmental protection. Her expertise spans geoinformation systems, spatial data integration, and workflow optimization, with a forward-looking focus on applying emerging technologies such as artificial intelligence and next-generation connectivity to enhance national geospatial infrastructure and collaboration.



Suvi-Tuulia Haakana

GIS & Information Security Specialist, Fortum, Finland

Suvi has established herself as a leader in the security of GIS and geospatial data across multiple organizations. Her expertise is recognized through her publications and appearances on podcasts dedicated to this critical subject. Additionally, she has been chosen as a keynote speaker at the prominent security seminar hosted by Technology Industries Finland and Geoforum Finland, showcasing her significant contributions to the field.



Thiagarajan Krishnamurthy

Lead Product Manager Data & AI, HudHud Maps, India

Thiagarajan is Lead Product Manager Data & AI at HudHud Maps, India, where he drives the strategy, development, and execution of advanced geospatial data and artificial intelligence solutions. In this role, he leads cross-functional teams across product, engineering, data science, and partnerships to build scalable, intelligent mapping platforms tailored for emerging markets. Combining geospatial intelligence, Large Language Models, and real-time rider telemetry, he has transformed mapping and logistics in complex Indian cities, building dynamic map engines, accurate building models, and a two-leg ETA system that improves efficiency, customer experience, and rider fairness. His expertise spans geospatial data science, LLM-driven analytics, spatial modeling, and product strategy, delivering measurable impact across operations, marketing, and user engagement.



SMU

Vamshi Karanam

Researcher, Southern Methodist University, USA

Vamshi is a Researcher at Southern Methodist University in the United States, specializing in geodesy and geophysics with expertise in InSAR, GNSS, and multi-sensor remote sensing. Supported by a NASA FINESST award, he integrates satellite geodesy, physics-based modeling, and machine-learning geospatial analytics to study coastal, urban, and energy-related deformation, including subsidence, landslides, and infrastructure risk. His research has influenced policy, industry, and public discourse, and he is dedicated to inclusive, hands-on teaching and mentoring in environmental and coastal geoscience.



Aegir Consult

Victor Wanderi Wahome

CEO & Founder, Aegir Consult Ltd, Kenya

Victor is a technology and geospatial leader in Kenya and the Founder and CEO of Aegir Consult Ltd. With a strong background in Geomatic Engineering and GIS, he specializes in geo-informatics, enterprise information systems, and geospatial system integration that turn complex data into actionable insight. Through partnerships with global technology leaders such as Microsoft, IBM, Fulcrum, and Zebra Technologies, he has delivered impactful solutions including automated land information systems and smart construction monitoring platforms. His expertise lies in strategic system design, digital transformation, and change management—driving technology adoption that empowers decision-makers and delivers lasting impact.

