



**A Premium Geospatial Industry Conference**

**CLICK TO KNOW MORE**

**IGN FI**

# GEOSPATIAL INFRASTRUCTURE & LAND ADMINISTRATION



**geoFIT**  
GROUP

# CONTENTS

- **IGNFI at a glance**
- **Geographical footprints**
- **2 significant LA & NSDI Use cases**
  - **Uganda – DISINLINSI project**
  - **Ivory Coast – SIGFU Project**
- **Conclusion**

# Our Identity

# Our key competences

IGN FI is the international brand of both **GEOFIT Group** and **IGN**, **IGN ng** as their technical arm abroad, valorizing their technologies & expertise in the geospatial domain, over 4 main sectors of expertise :



**NSDI**



**Land Tenure/  
Land Admin/  
Cadastral/LIS**



**Envir./Risk/  
Agric./Forestry**



**Civil security/  
Defence**



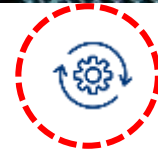
Geodetic network/ geoid computation/ metrology



Cartography



Data collection/ processing/ structuring databases



Development of data infrastructure and geo-portal



Systematic Registration of Properties & cadastre



Earth Observation



## Key Figures & dates

**35 Years**

EXPERIENCE IN  
MORE THAN

**100**  
countries

A 2022 TURNOVER OF

**18 M€**

A POOL OF INTERNATIONAL  
PARTNERS AND EXPERTS

**40**

OVER **700** PROJECTS  
ABROAD SINCE 1986

The French National Geographic Institute (IGN) is created. It replaces the Geographical Service of the Army, created in 1887.

**1940**

Creation of FIT Conseil, a firm of surveyors, which will become GEOFIT GROUP in 2017.

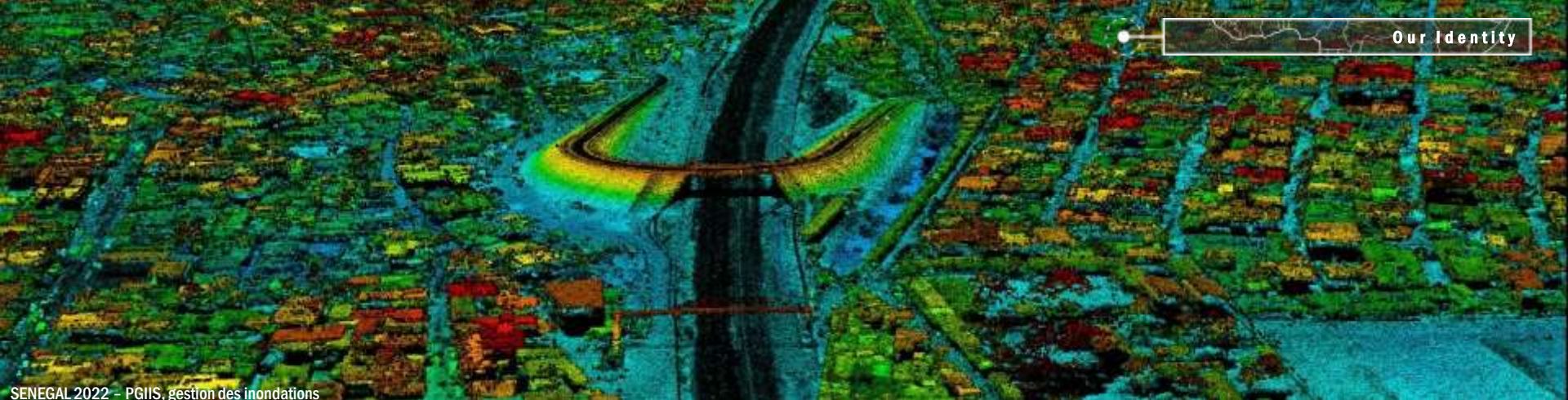
**1968**

Creation of IGN France International, a subsidiary of the IGN, which carries out the international activities of the public establishment.

**1986**

GEOFIT GROUP becomes majority shareholder of IGN France International, which becomes IGN FI.

**2015**



SENEGAL 2022 - PGIIS, gestion des inondations

## Our geographical footprint

Since 1986, our projects have taken us to over 100 countries.

# Some recent achievements

## From Central America and the Caribbean....



**Kazakhstan, Kirghizistan, Tadjikistan, Ouzbékistan** : Conception, développement et implémentation d'un système de gestion de gazoducs - 2005-2008

**Arabie Saoudite - Qatar** : Démarcation de la frontière terrestre et délimitation des lignes frontalières offshore - 2010 - 2013

**Arabie Saoudite** : Assurance qualité pour la production d'une base de données topographiques nationale au 1:25 000 - 2017-2019

Création d'un système national de références géodésique basé sur un réseau de stations permanentes - 2012-2016

**Emirats Arabes Unis** : Consultance pour la réalisation d'un modèle 3D pour la municipalité d'Abu Dhabi - 2009-2016

Charte des lois régalières - Abu Dhabi land survey act - 2013-2014

**Maldives** : Cartographie terrestre et bathymétrie et évaluation des conséquences du changement climatique - 2010-2011

**Sri Lanka** : Cartographie et solutions SIG dans le domaine de l'aménagement - Projet SURM - 2007-2009

**Bangladesh** : Assistance à maîtrise d'ouvrage pour la refonte cartographique du Survey of Bangladesh - 2008-2011

**Vietnam** : SIG pour la gestion d'un réseau d'eau potable - 2011-2012

Etude d'un plan de modernisation et de mise à jour du système foncier des trois principales villes du Vietnam - 2009-2011

**Caribbe** : Conception d'un système d'information environnemental - 2005-2007

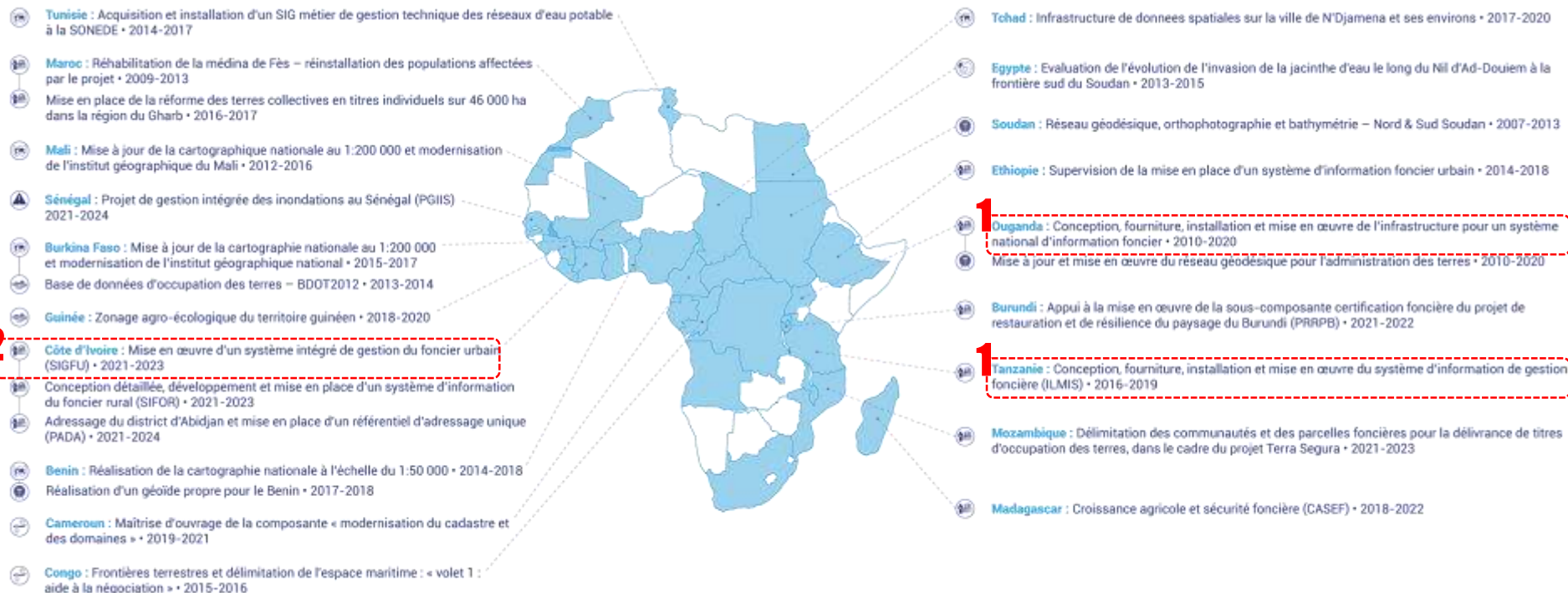
**Indonésie** : Création d'un centre national et d'un centre régional de gestion des catastrophes en Indonésie - 2006-2007

Analyse spatiale des terres dans la mise en œuvre de la réforme agraire - 2021-2022

**Polynésie Française** : Prises de vues aériennes, géodésie, nivellement de précision, cartographie - Opérations du "Plan Topo-Foncier" - 2001-2008

Assistance, conseil et transfert de compétence en géodésie, nivellement auprès du service de l'urbanisme à Papeete - 2016

## ....to Middle East, Asia and Polynesia





UGANDA 2010-2020 Implantation of a National Land Information System

## The national land information system as a catalyst for the Ugandan NSDI

---





**Constitution**

**1995**

**Land Sector Strategic Plan I  
(LSSP I) - 2001 -> 2011**

**2001**

**2011**

**1998**

**Land Act, 1998 -  
operationalises Land  
Reforms of Constitution**

**2022**

**Land Sector Strategic Plan  
II (LSSP II)**

# Key Figures

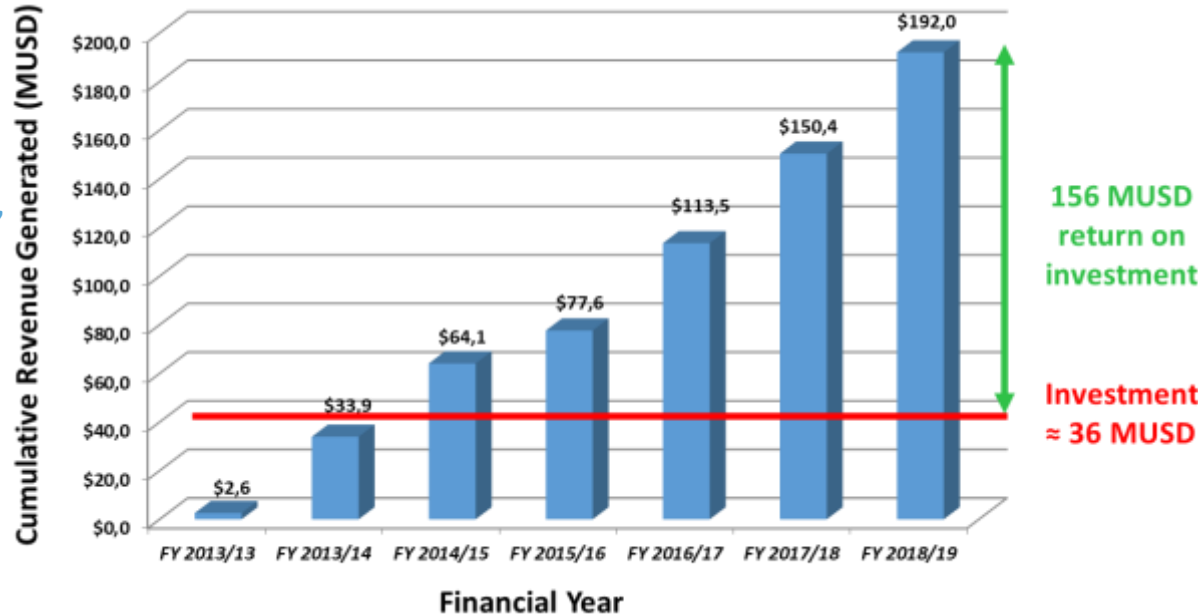


- Conversion of all land related documentation
- Development of a complete system integrating all land transactions
- Development of a Full OS Web Land e-Solution, Based on LADM model, driven by business processes
- A first step towards the building up of the Land Geospatial Infrastructure
- Implementation of the system at national level
- More than 700 people involved in the project
- Robust & continued communication and change management programme



# Land Geospatial Infrastructure KIP as per 2019

- Increases land tenure security
- Promotes access to finances and investments,
- Efficiency in land market dynamic,
- Contributes to infrastructure development (knowledge of the territory),
- Increase in revenue





# Integrated Urban Land Management System for the Greater Abidjan

A comprehensive Urban Land Administration modernization project hand to hand with with an embedded SDI



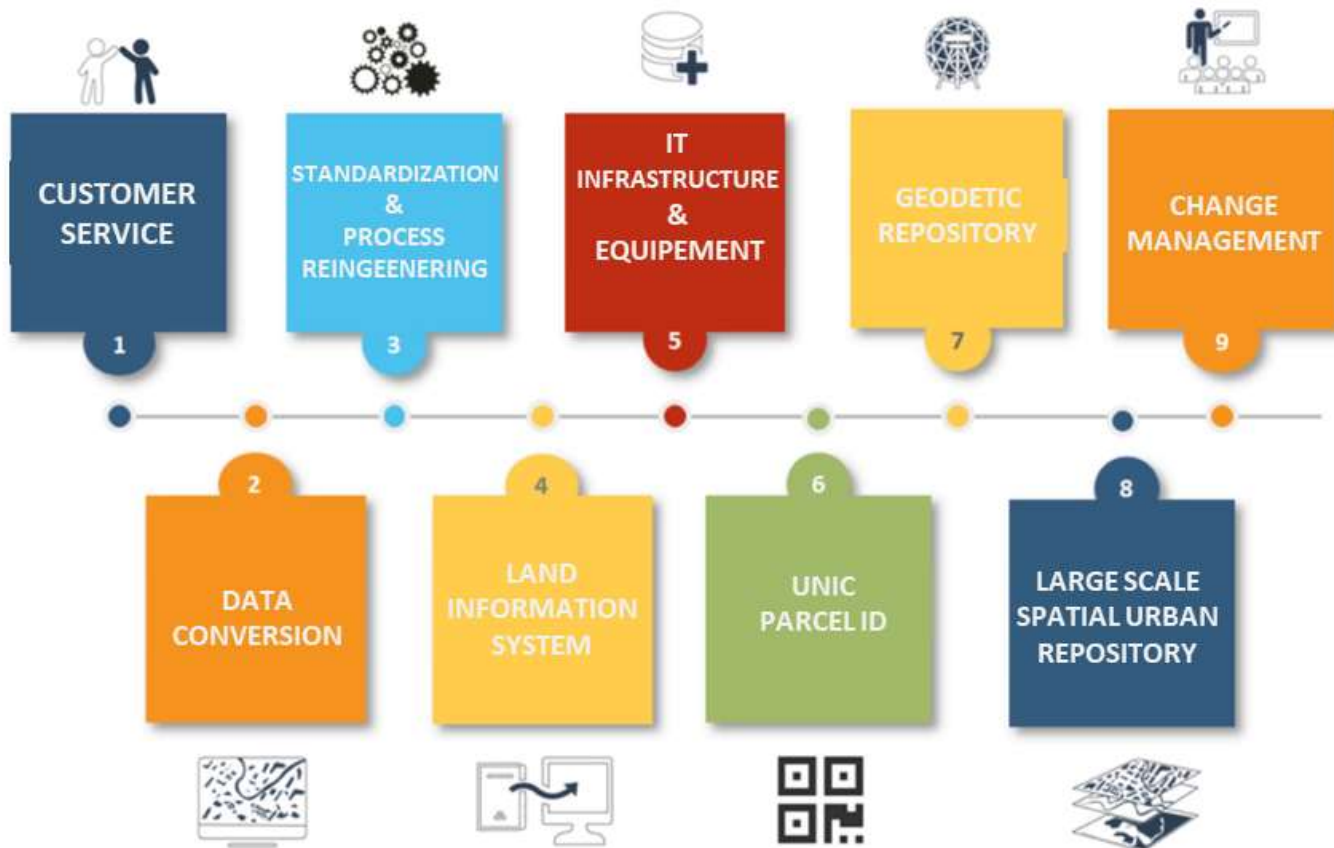
## DOING BUSINESS 2018

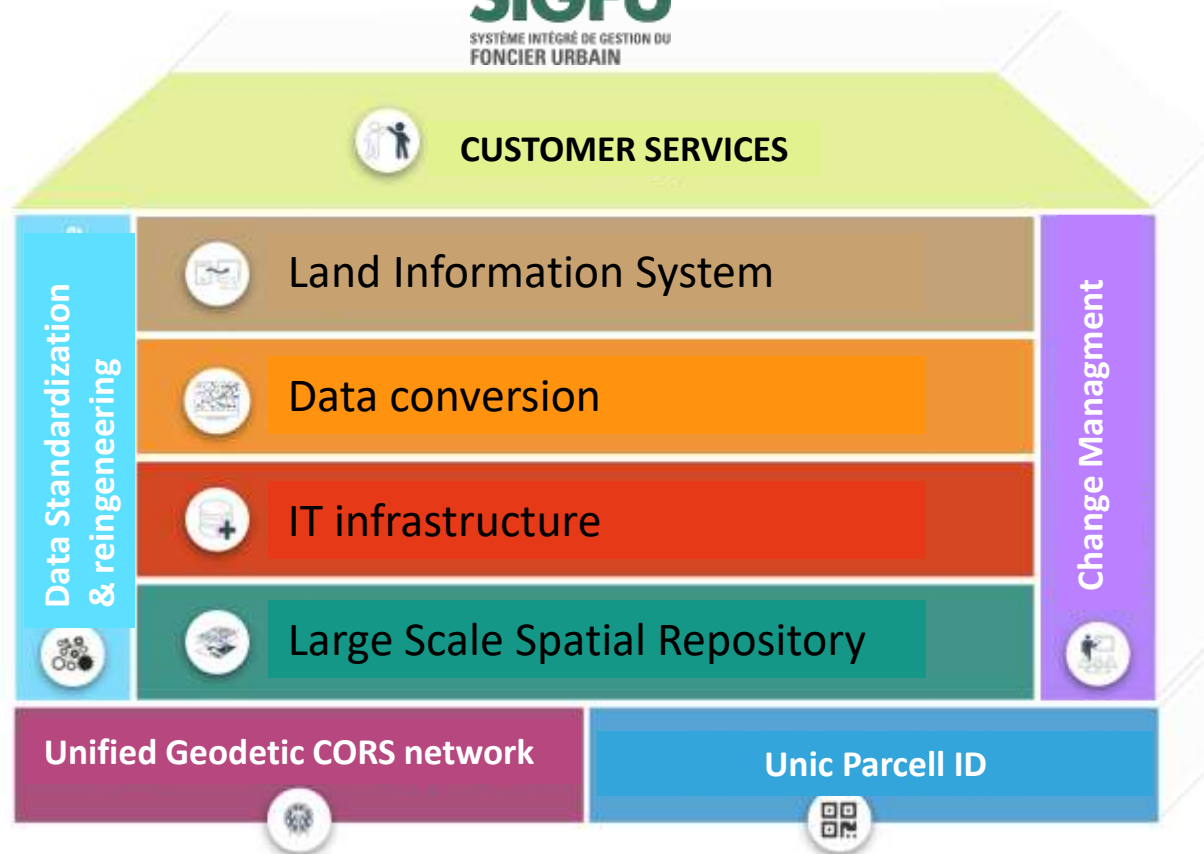
<b>Starting a Business (rank)</b>	29
Score of starting a business (0-100)	93.7
Procedures (number)	4
Time (days)	6
Cost (number)	2.7
Paid-in min. capital (% of income per capita)	2.7

<b>Dealing with Construction Permits (rank)</b>	152
Score of dealing with construction permits (0-100)	57.4
Procedures (number)	22
Time (days)	163
Cost (% of warehouse value)	5.9
Building quality control index (0-15)	10.0

<b>Getting Electricity (rank)</b>	141
Score of getting electricity (0-100)	59.2
Procedures (number)	8
Time (days)	53
Cost (% of income per capita)	2,194.1
Reliability of supply and transparency of tariff index (0-8)	5

<b>Registering Property (rank)</b>	112	↗
Score of registering property (0-100)	58.6	↗
Procedures (number)	5	↗
Time (days)	39	↘
Cost (% of property value)	7.1	↗
Quality of the land administration index (0-30)	10.0	↘





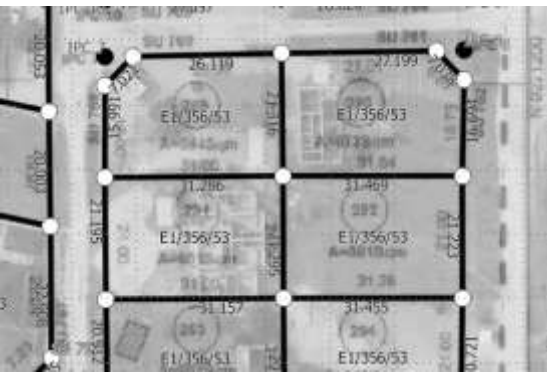


# Key Figures

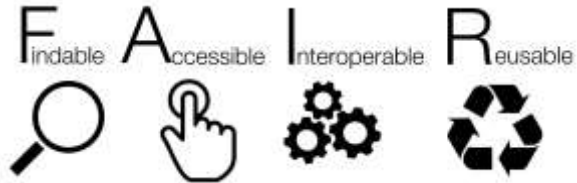


- Conversion of all land related documentation
- Development of a complete system integrating all land transactions
- Development of a Full OS Web Land e-Solution, Based on LADM model, driven by business processes
- A first step towards the building up of the Land Geospatial Infrastructure
- Implementation of the system at national level
- More than 700 people involved in the project
- Robust & continued communication and change management programme

# Conclusion



- We do Geospatial Infrastructure without even naming it
- However, Geospatial Infrastructure is still a paradigm that needs to be advocated especially in Africa
- The Geo Fair Data Approach is also the next step



# IGN FI

---

**7, rue Biscomet 75012 Paris (France)**

**+33 1 42 34 56 56**

**[www.ignfi.com](http://www.ignfi.com) - [info@ignfi.fr](mailto:info@ignfi.fr)**

**GEOFIT**  
GROUP

# Geodetic Network



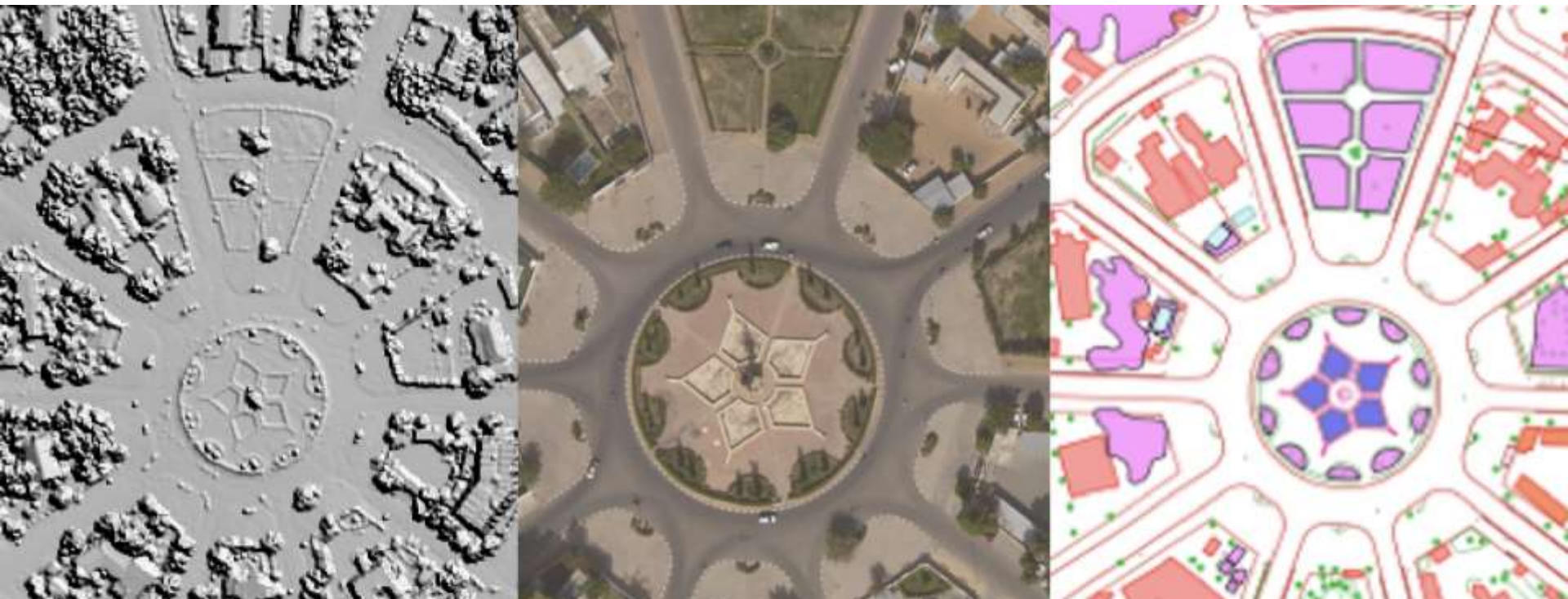
# Geographical information



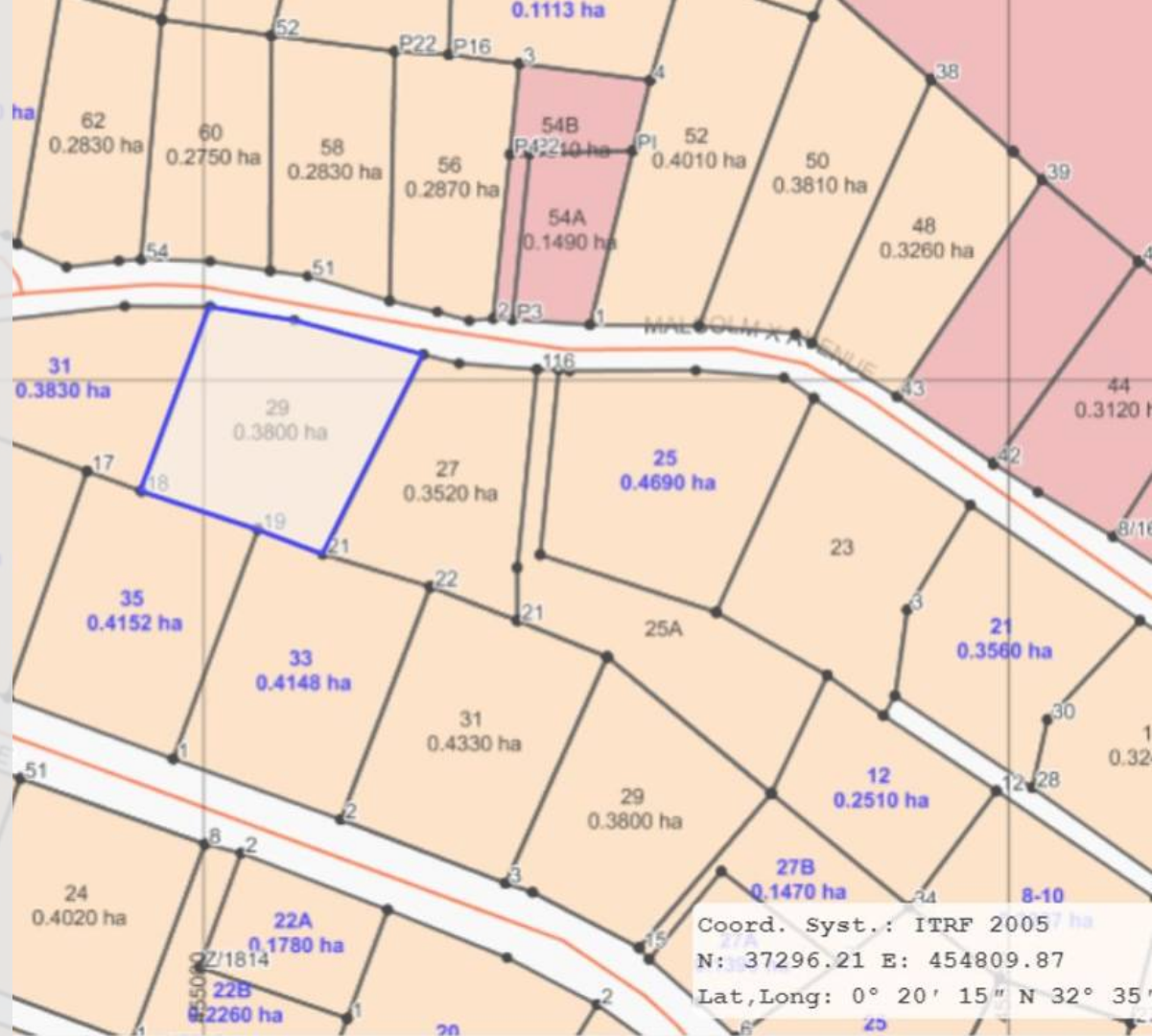
# LARGE SCALE GEOGRAPHICAL INFORMATION REPOSITORY

Setting up an up-to-date, durable, accurate and interoperable digital geographic reference system

► Porteur : DTC/DU



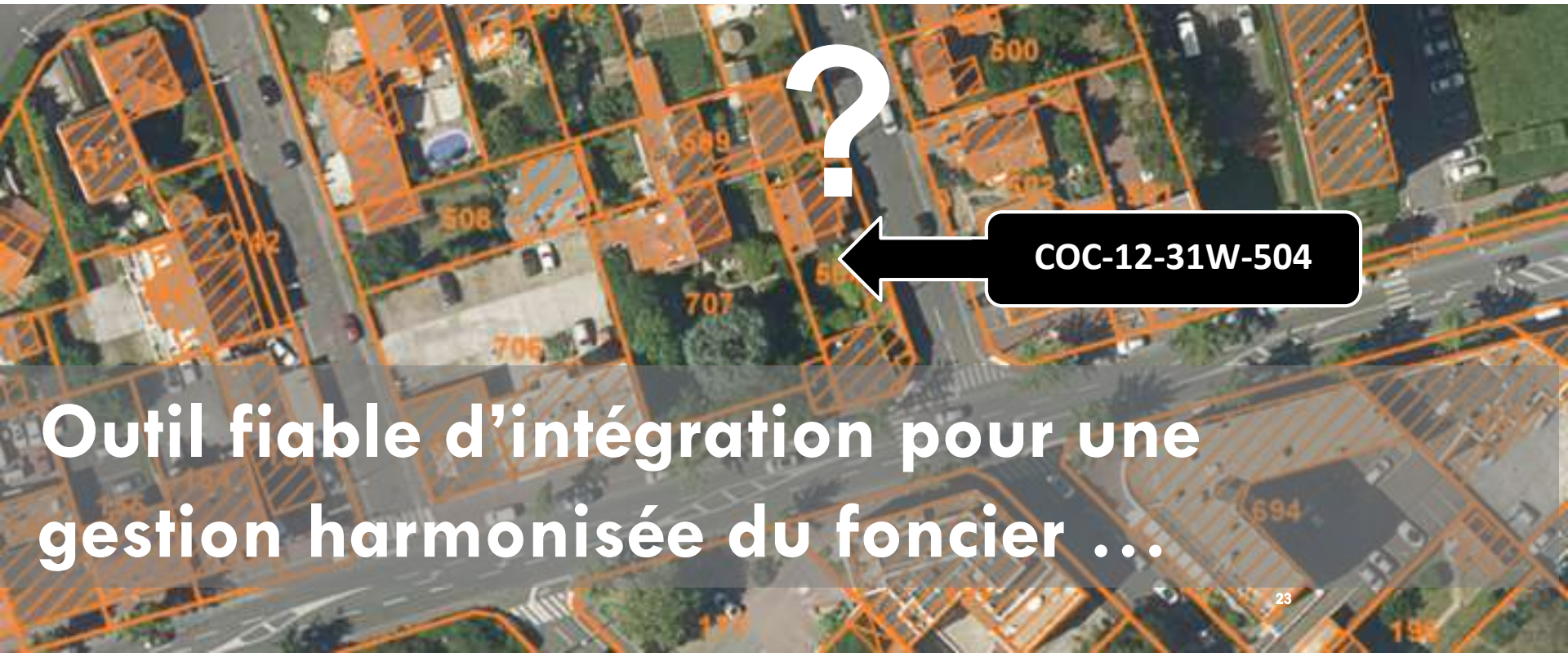
# Unique identifier



# LAND PARCEL UNIQUE IDENTIFIER

Elaboration of the standard for the unique identification of parcels

▶ **Stakeholders : DTC / CADASTRE**



**Outil fiable d'intégration pour une  
gestion harmonisée du foncier ...**

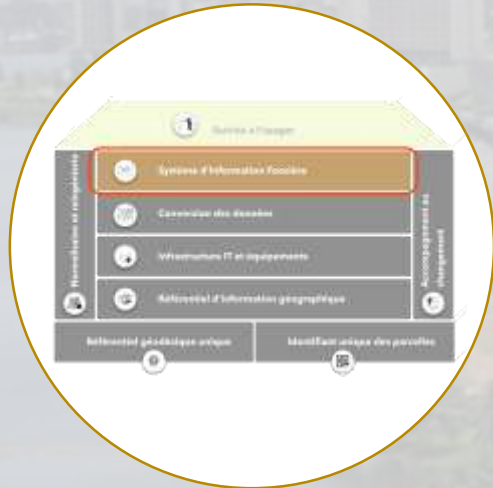
# LAND PARCEL UNIQUE IDENTIFIER

Elaboration of the standard for the unique identification of parcels

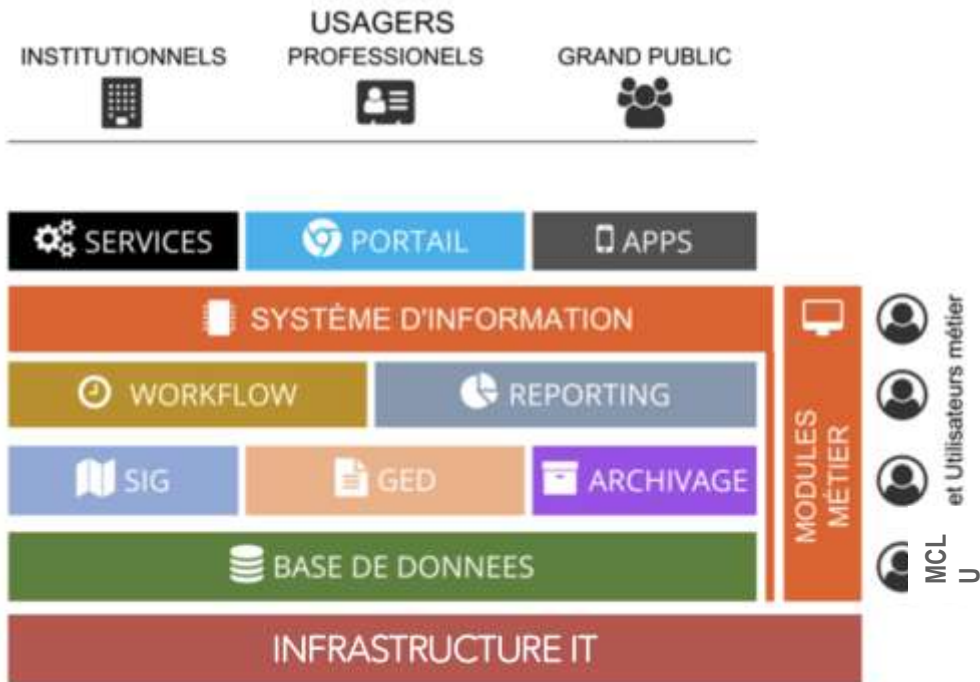
COC-12-31W-504

...établissant un lien entre les données spatiales et textuelles de toutes les administrations gestionnaires du territoire national

# Land Information System



# INTEGRATED URBAN LAND MANAGEMENT SYSTEM(SIGFU)



Sécurisation de l'information

Partage de l'information

Intégration des données