




Geospatial World Forum

April 2026





GIS Team's contribution to **energy projects** development

Summary

- Voltalia Overview
- GIS Team Overview
- GIS solutions

Voltalia Overview



Key Figure s

373

GW

in operation and under
construction

GW

of project pipeline

24

Countries

on 3 continents

2006

Dedicated

employees

20

Voltalia is a mission driven company*

— OUR MISSION

*Improve global environment
fostering local development*

— OUR VALUES



Integrity



Ingenuity



Entrepreneurship



Team spirit

*Voltalia became a Mission-driven Company in May 2021 voted at General Assembly (99.98%). The company has registered in its by-laws a purpose and environmental and social objectives.

Mission objectives

MISSION DRIVEN COMPANY



1
Act for the production of a renewable energy, accessible to the many

2
Contribute with the local population to the sustainable development of territories

3
Make the best out of the planet resources in a sustainable way

Power producer

We produced **4.7 TWh electricity** in Latin America, Europe and Africa

Equivalent to electricity consumption of 5.4 million people

8.1

billion in future revenues under contracted portfolio

16.

years remaining PPA life (weighted average)

71

of revenues from PPAs are indexed on inflation

98

of the capacity is backed by long term PPA

95

of the portfolio is competitive

Service provider



17.4 GW of project pipeline

DEVELOPMENT



Our multi-energy expertise enables us to make the most out of each territory's local energy resources.

Voltalia's teams work on all steps of project development, from assessing potential and securing the best spots to launching construction after obtaining all required permits and authorizations.

3.3 GW constructed or under construction for Voltalia

ENGINEERING, PROCUREMENT & CONSTRUCTION



Multi-technology building experts.

Voltalia provides full Construction services from the design of the plant to its commissioning. Our worldwide coverage and best-in-class teams ensure high-quality services.

10.2 GW of assets under management for Voltalia and on behalf of third parties

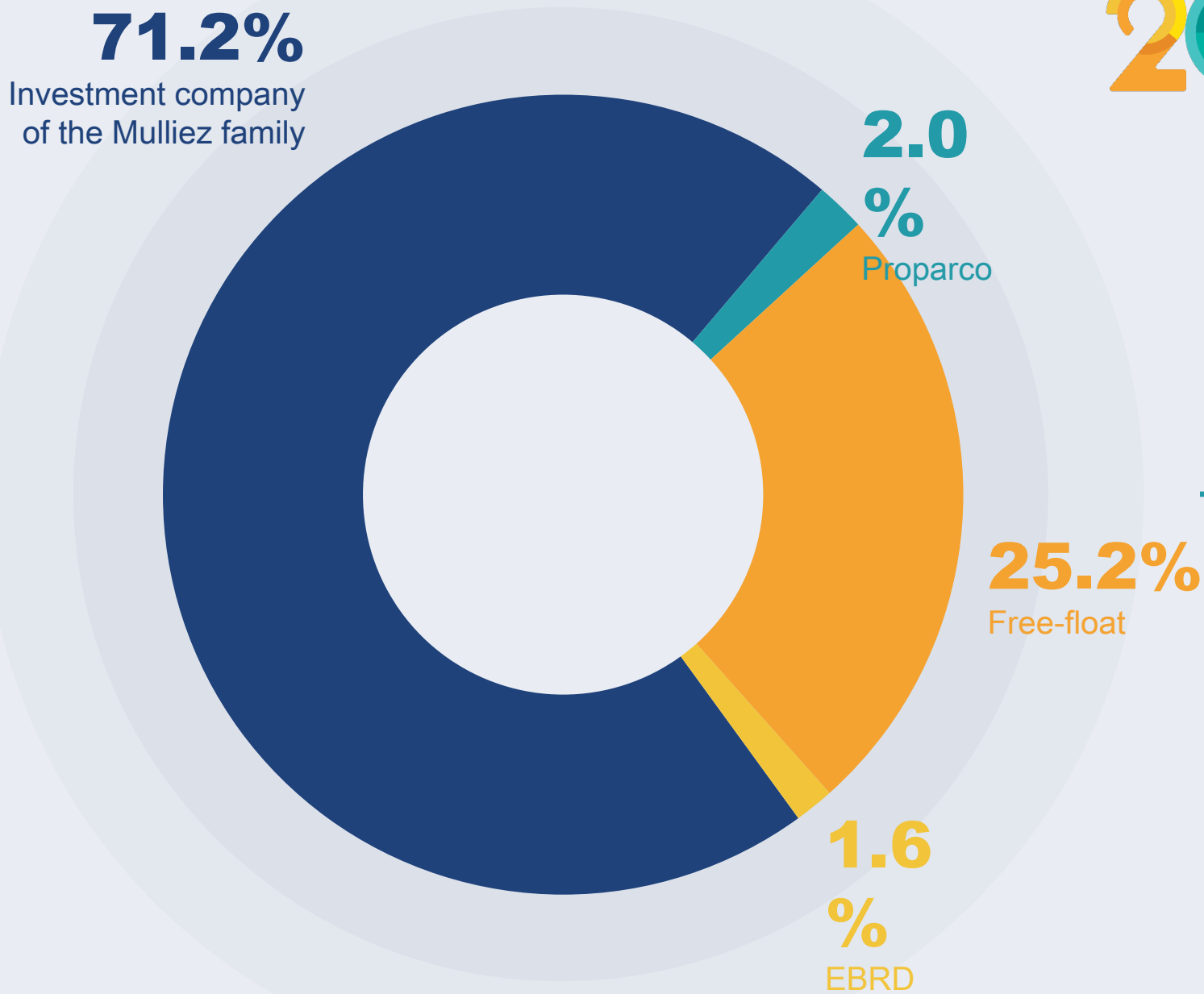
OPERATION & MAINTENANCE



Voltalia is an international Operation & Maintenance service provider, from diagnostic to ongoing operations management.

Our 24/7, real-time monitoring and control allow us to respond quickly when needed at the solar, wind, biomass, hydro and storage plants we oversee in over 20 countries. We offer full asset management services to ensure sustainable and reliable returns on our clients' investments.

A solid shareholding base



Family-owned retail brands include



As of December 31, 2024

Voltalia is listed on the regulated market of Euronext Paris, compartment A (FR0011995588 – VLTSA). The Group is also included in the Gaïa-Index, an index for socially responsible midcaps.

GIS Team



The Team



Rafaela Carvalho
r.carvalho@votalia.com



Bruno Campos
b.campos@votalia.com



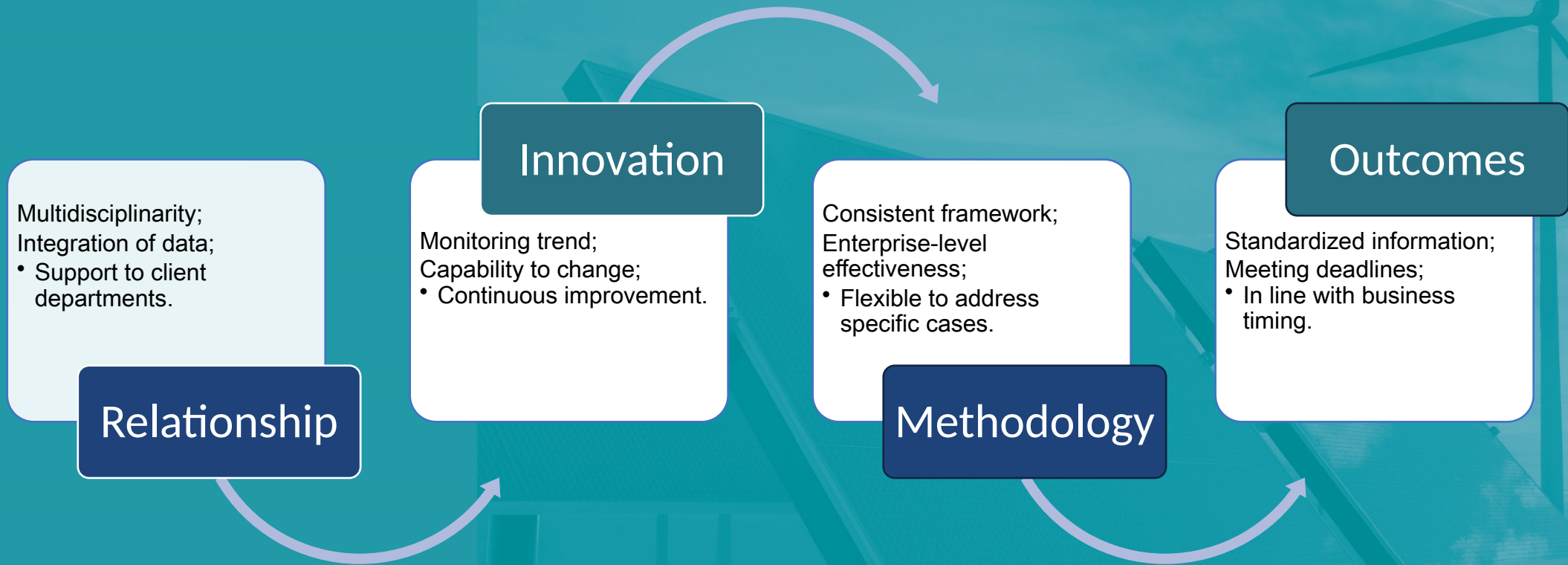
Rafael Pereira
r.pereira@votalia.com



Leonardo Motta
l.motta@votalia.com

geolatam@votalia.com

Team's objectives



GIS team goal is empowering strategic decision-making with advanced geospatial insights.

GIS Solutions



Project Development

Prospecting new areas

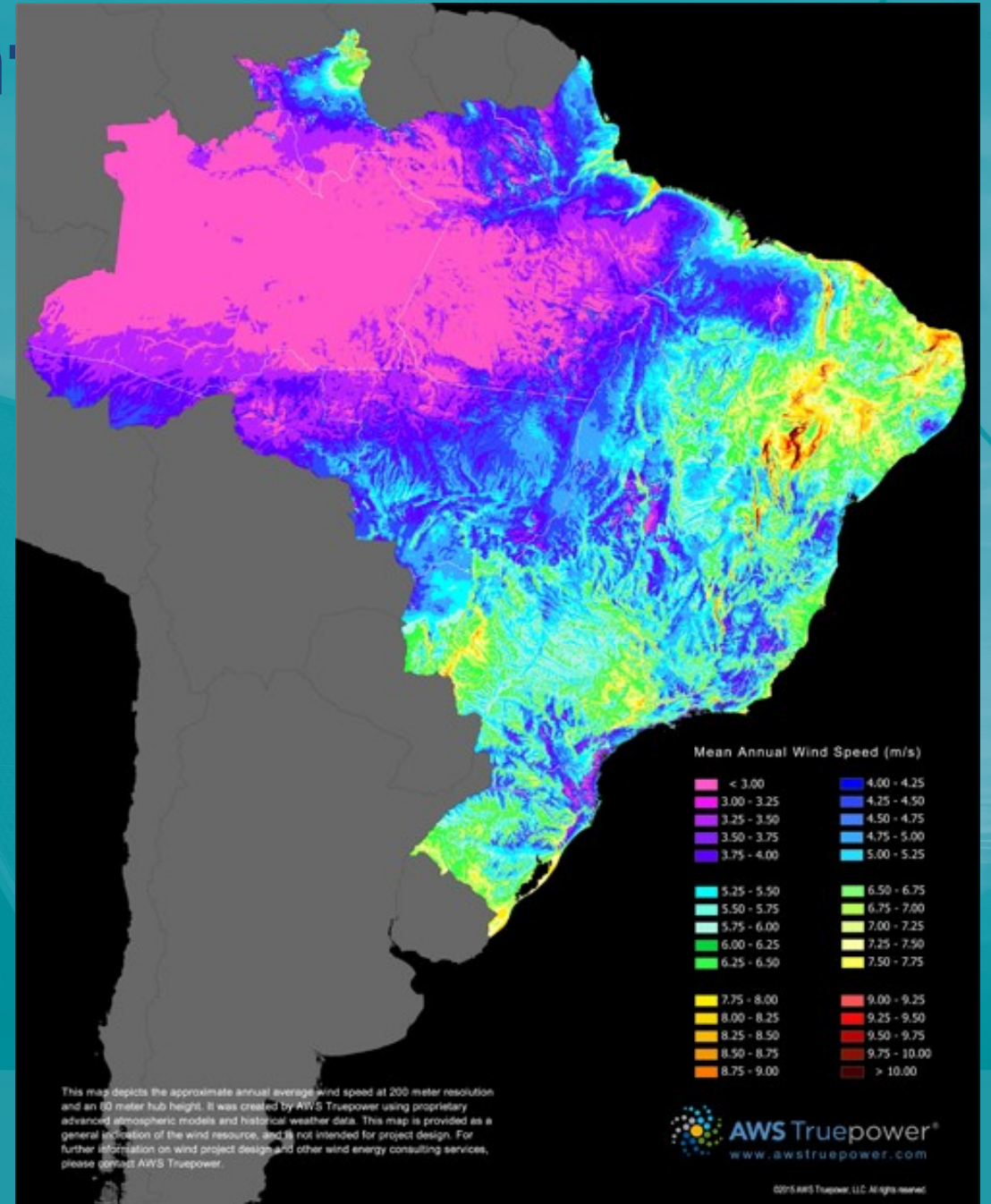
How to find new areas in a country of that



Project Development

Prospecting new areas

- **Multi-criteria analyses**
- **Site selection methodology**
- **Land management**
- **Field Work analyses**
- **etc**



Constraints analysis

Divided by different phases of the project

1 **Prospection**

Initial step. Macro analysis.

2 **Development**

Medium to long term stage. Constant updates.

3 **Construction**

Final step. Micro analysis.



Tools

Etapa:
Análise de dados secundários

Aplicação:
GeoVolt

Fonte:
Diversas

Ferramenta:
WebApp Builder
ArcGIS (na imagem)
Experience Builder
ArcGIS (atual)



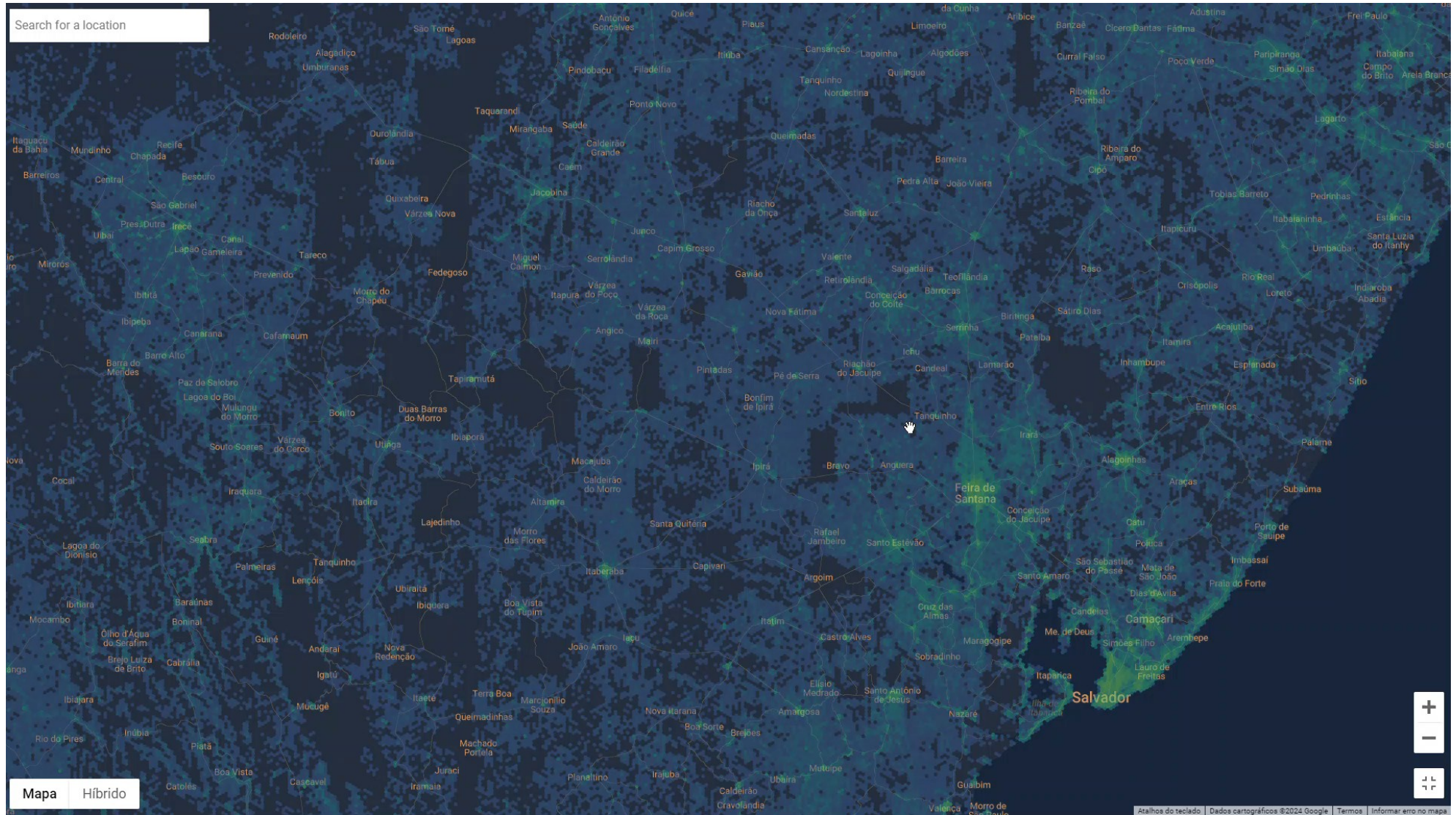
Tools

Etapa:
Análise
de edificações

Aplicação:
Ferramenta ruído

Fonte:
Google Open
Buildings Data

Ferramenta:
Model Builder
ArcGIS Pro (desktop)



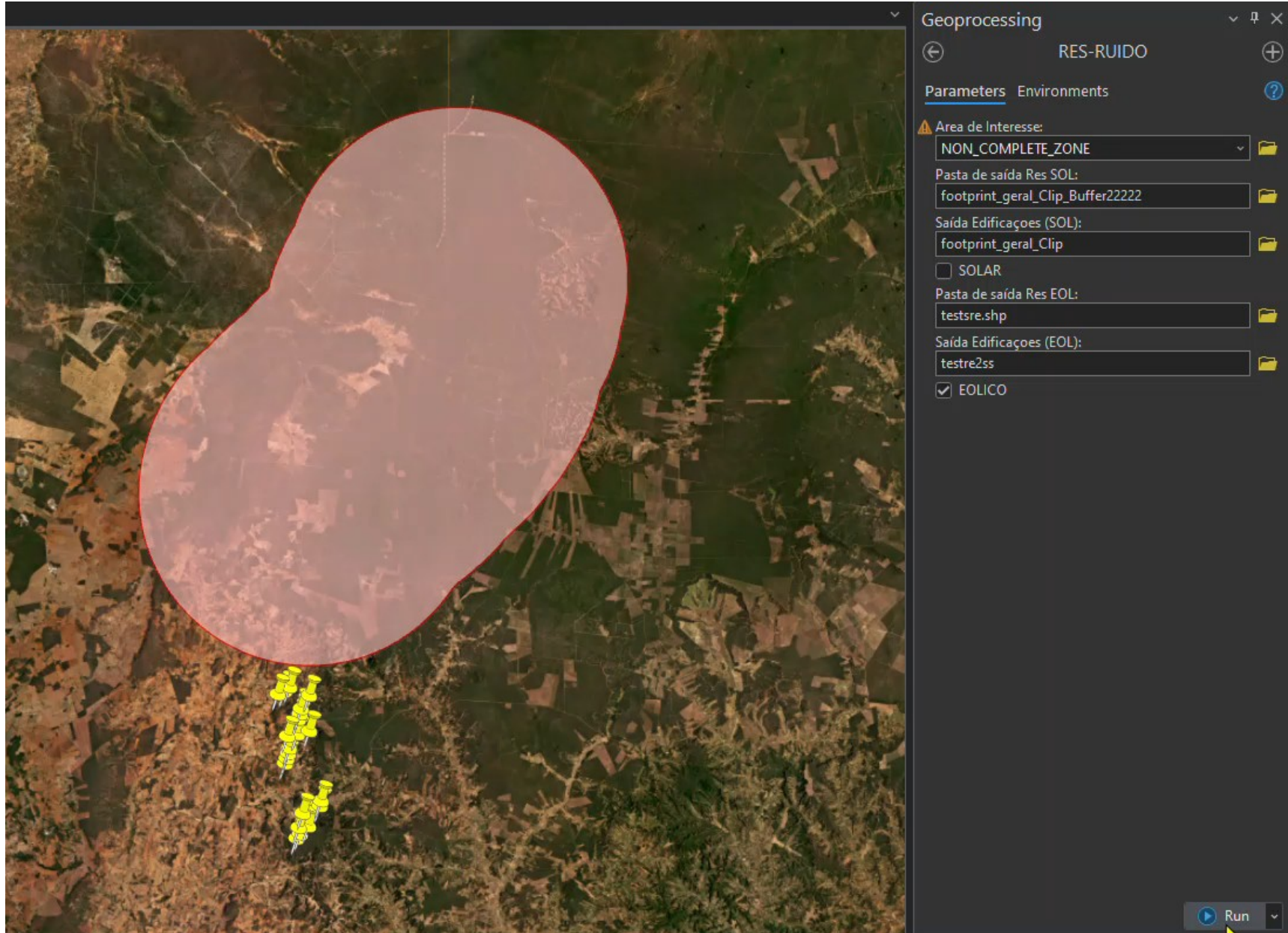
Tools

Etapa:
Análise
de edificações

Aplicação:
Ferramenta ruído

Fonte:
Google Open
Buildings Data

Ferramenta:
Model Builder
ArcGIS Pro (desktop)



Tools

Etapas:
Validação de dados e informações primárias

Aplicação:
WebMap de Campo

Fonte:
Coleta primária

Ferramenta:
Field Maps
ArcGIS (mobile)

The screenshot displays the ArcGIS Online interface for a web map titled "CAMPO_092022". The browser address bar shows the URL: <https://vdb.maps.arcgis.com/apps/mapviewer/index.html?webmap=dbba2bca0865461eaa519ed4f264ffe9>. The map features several layers, including "Ponto de Atenção (Coleta)", "Linha de Atenção (Coleta)", "Área de Atenção (Coleta)", "Layout (EÓLICO) JUL/2022", "Layout (SOLAR)", "Fundiário", "Subestação", "Rodovias", "Vias", "Restrições", and "Curva de Nível (21092022)". A popup window titled "PONTO ATENCAO - PONTO ATENCAO" is open, displaying a table with the following data:

nome	Edificação
observação	Não é moradia - depósito precário

Below the table is a photograph of a brick building under construction. The map also shows various colored areas and circular markers with question marks, indicating points of interest or data points being reviewed.

Tools

Etapa:
Validação de dados e
informações
primárias

Aplicação:
WebMap de Campo

Fonte:
Coleta primária

Ferramenta:
Field Maps
ArcGIS



False positive



Tools

Distanciamento necessário de moradias de acordo com a legislação estadual

Etapa:

Validação de dados e informações primárias

Aplicação:

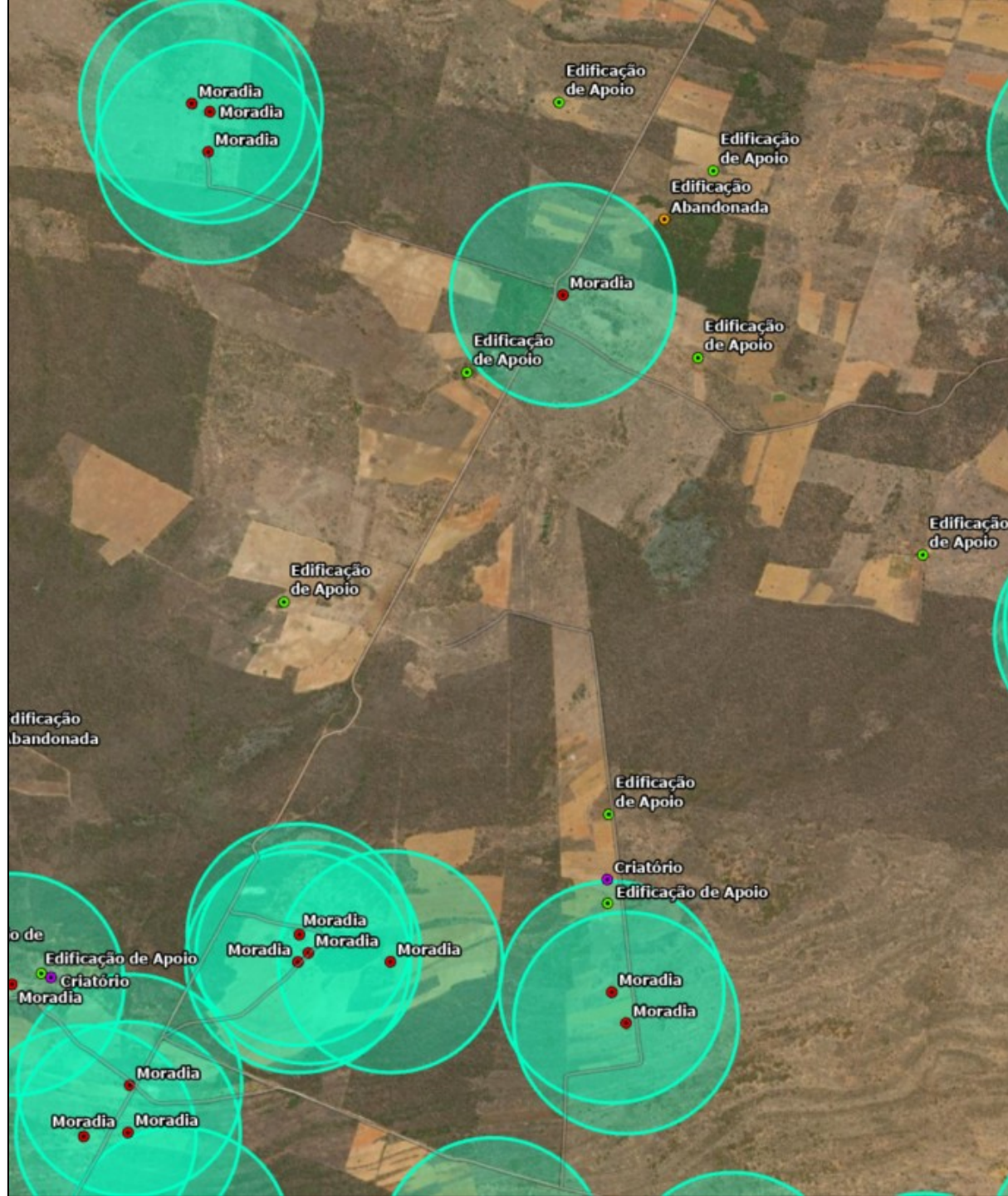
WebMap de Campo

Fonte:

Coleta primária

Ferramenta:

Field Maps
ArcGIS (mobile)



Tools creation

Post field work

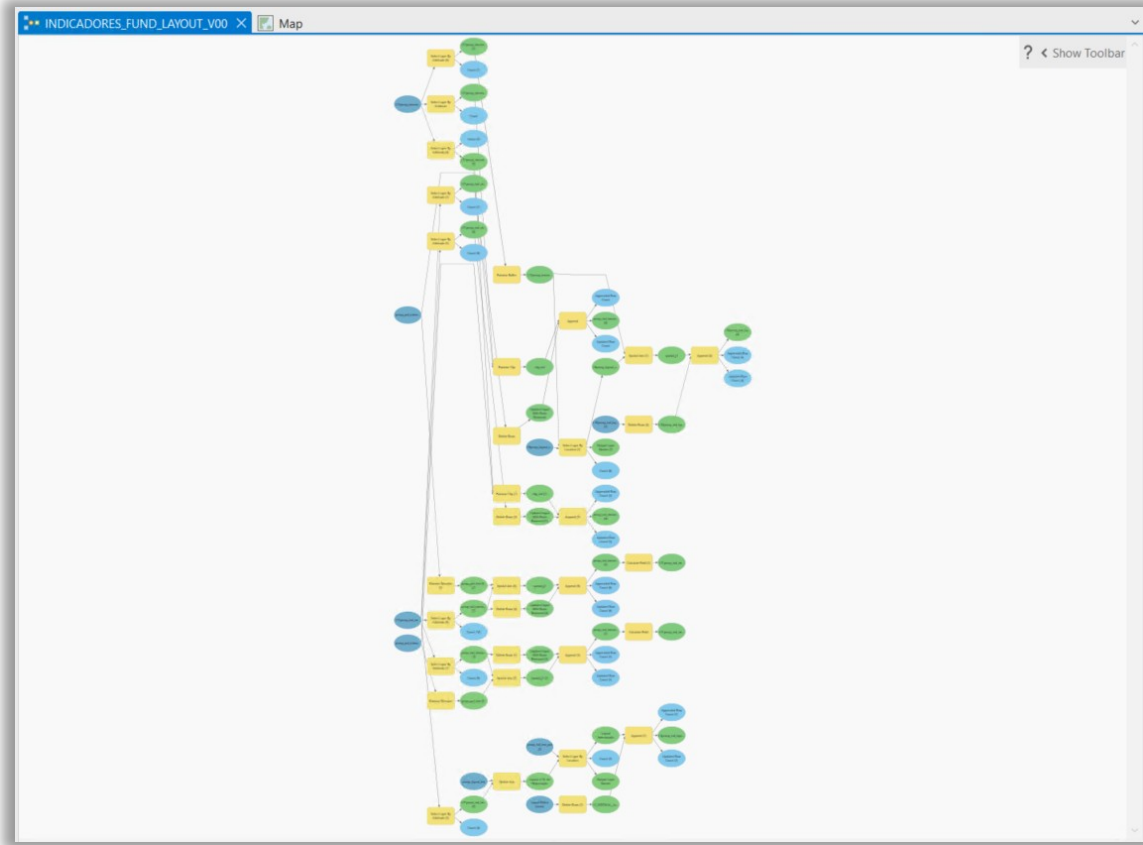
Data synchronization

The screenshot shows the 'Editor' window in ArcGIS Pro. The form is titled 'Imóveis Fundiários' and contains the following fields:

- ID Imóvel: PCM_222
- Proprietário: [Redacted]
- Tipo de Proprietário: Pessoa Física
- Contato Telefônico: (85) 9 [Redacted]
- Nome do Imóvel: Fazenda Casa de Pedra
- Qualificação do Imóvel: Matrícula
- Fonte do Dado: CAR
- Status de Negociação: Contratado
- Status do Contrato: Assinado pelos Proprietários
- Data Solicitação de Contrato: 27/11/2023
- Data Elaboração do Contrato: 05/12/2023
- Data Assinatura Proprietários: [Empty]

Buttons at the bottom: Fechar, Excluir, Salvar.

Spatial analyses (automate)



Etapa:

Análise espacial após o campo

Aplicação:

Model Builder para análise fundiária

Fonte:

Coleta primária

Ferramenta:

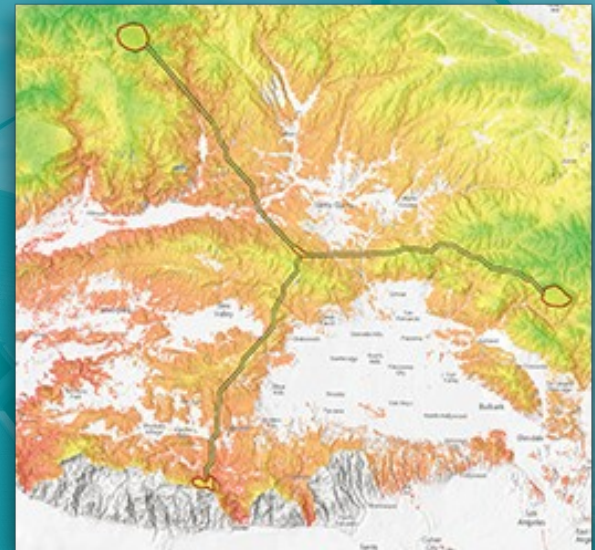
ArcGIS Pro (desktop e/ou máquina virtual)

System Implementation

ArcGIS Enterprise

- GIS platform for organizations, designed to store, manage, analyze, and share geospatial data securely;
- Stored in Azure Cloud, according to IT policy;
- GIS team members are responsible for populating data and managing the Portals;
- It permits collaboration across teams, avoiding rework;
- Intuitive platform also for non professional GIS users;
- Supporting access for over 100 active users;
- Working both online and offline for exchanging data in real time;
- It provides processes optimizations.

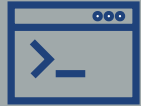
Seeing through all the layers in a single database



System Implementation

GIS Supportive Infrastructure

Completion



Tools

optimizations and automation



Increased teams'

Synergy

+35



Real time

data exchange by field and office workers

+60

GB

of secondary data dedicated to **constraints** analyses in **GeoVolt** application

GB

of geographic database dedicated to **Voltalia's projects** in **GeoHub** application

+10

TB

of data stored from physical storage to the cloud

System Implementation ArcGIS Enterprise

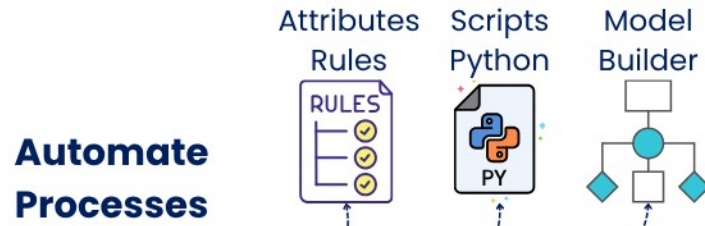
GIS Pillars

to implement the system
and new methodologies



General View

full lifecycle of data acquisition and ana



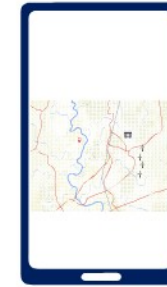
Feature Layers



Web Map



Customized Applications



Mobile

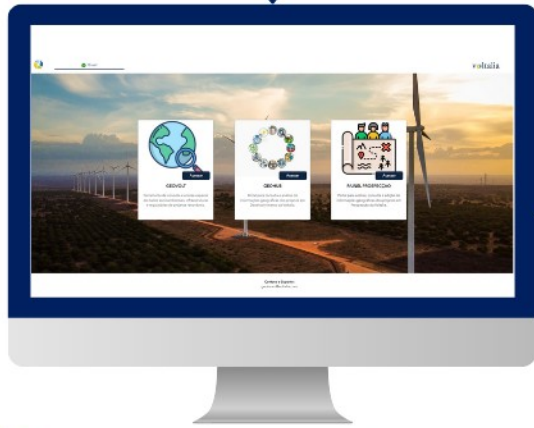


Web Application

Enterprise Database



Standardized Data



GIS Portal

Project Indicators and Information



Managers and Employees



Employees



Thank you!

Headquarters

84 Boulevard de Sébastopol, 75003 Paris
+33 01 81 70 37 00
info.voltalia@voltalia.com

[voltalia.com](https://www.voltalia.com)

