

e-geos

AN ASI / TELESPAZIO COMPANY

Space Infrastructure as a Service: Enriching Geospatial Platforms and Spatial Intelligence

Geospatial World Forum 2026

C. Milena A. Lerario, e-GEOS CEO





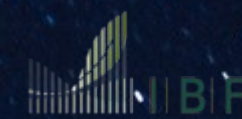
Geoinformation



600+ 50% in Italy,
50% ROW

134M € Revenues
2024

Partners e-GEOS



IBF Servizi
Precision Farming Jolanda di Savoia



Consorzio Tern
Local Services Basilicata



EarthLAB
Digital Systems & downstream - Luxembourg



e-GEOS & GAF Premises



≈300 people

ROMA

Headquarter

MATERA

Space Centre

SCANZANO

Space Centre



≈250 people

MONACO

GAF Headquarter

NEUSTERLITZ

GAF/DLR Station



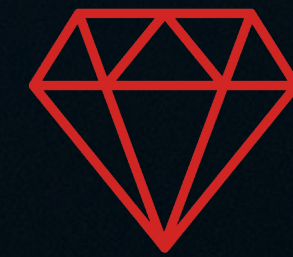
COSMO SKYMED
EXCLUSIVE RESELLER



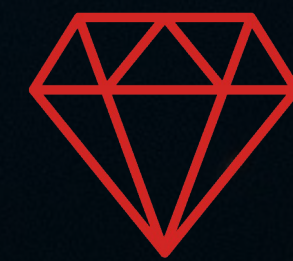
AMONG THE MAIN PROVIDERS OF
COPERNICUS SERVICES
Emergency, Land



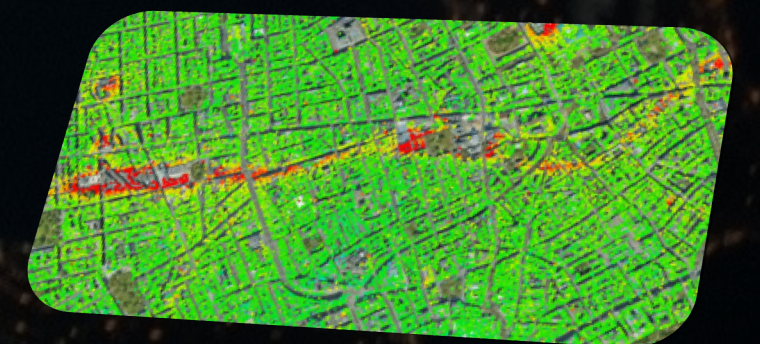
AMONG THE MAIN IMPLEMENTERS OF
THE ITALIAN IRIDE PROGRAMME
Downstream: MarketPlace, Services, Digital
Twin



EMERGENCY ROOM 24/7/365
for emergency management support



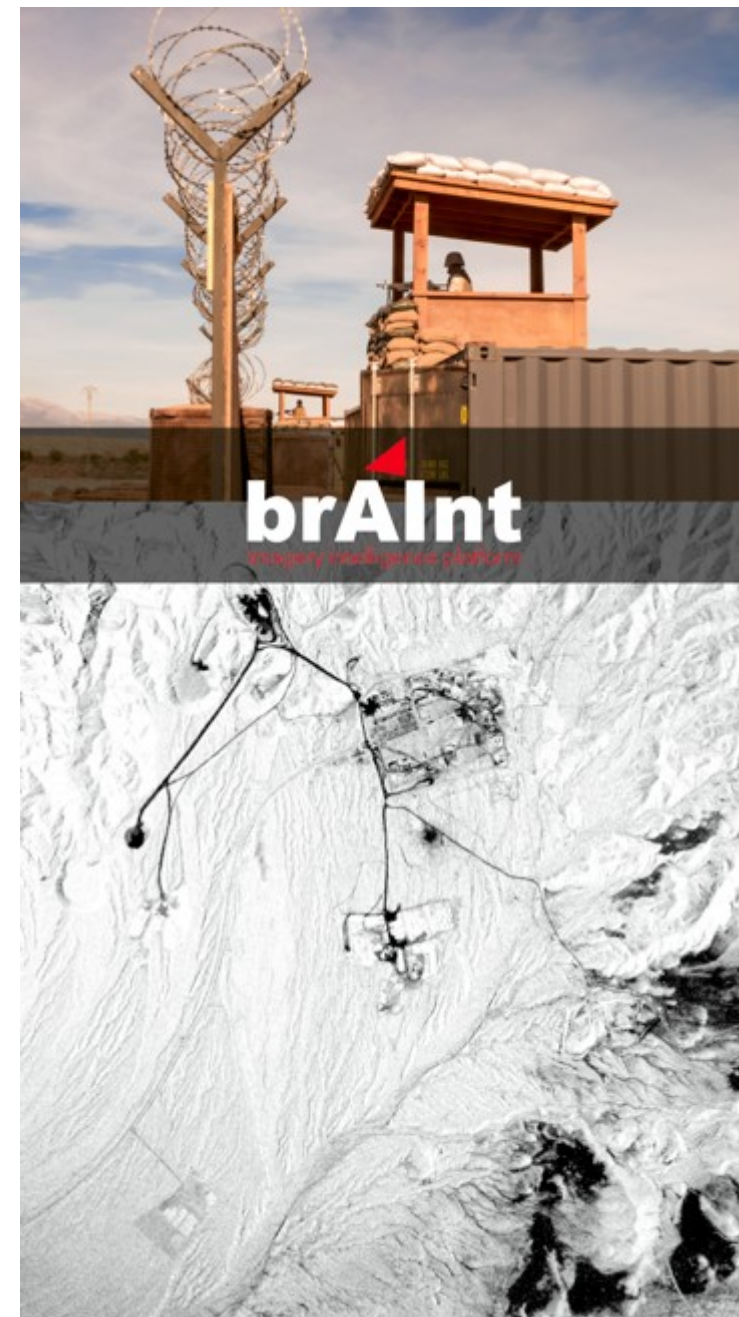
AMONG THE LEADING GLOBAL
OPERATORS OF INSAR
EGMS, Iride Ground Motion, ...



CLEOS and the Digital Solutions for Vertical Services



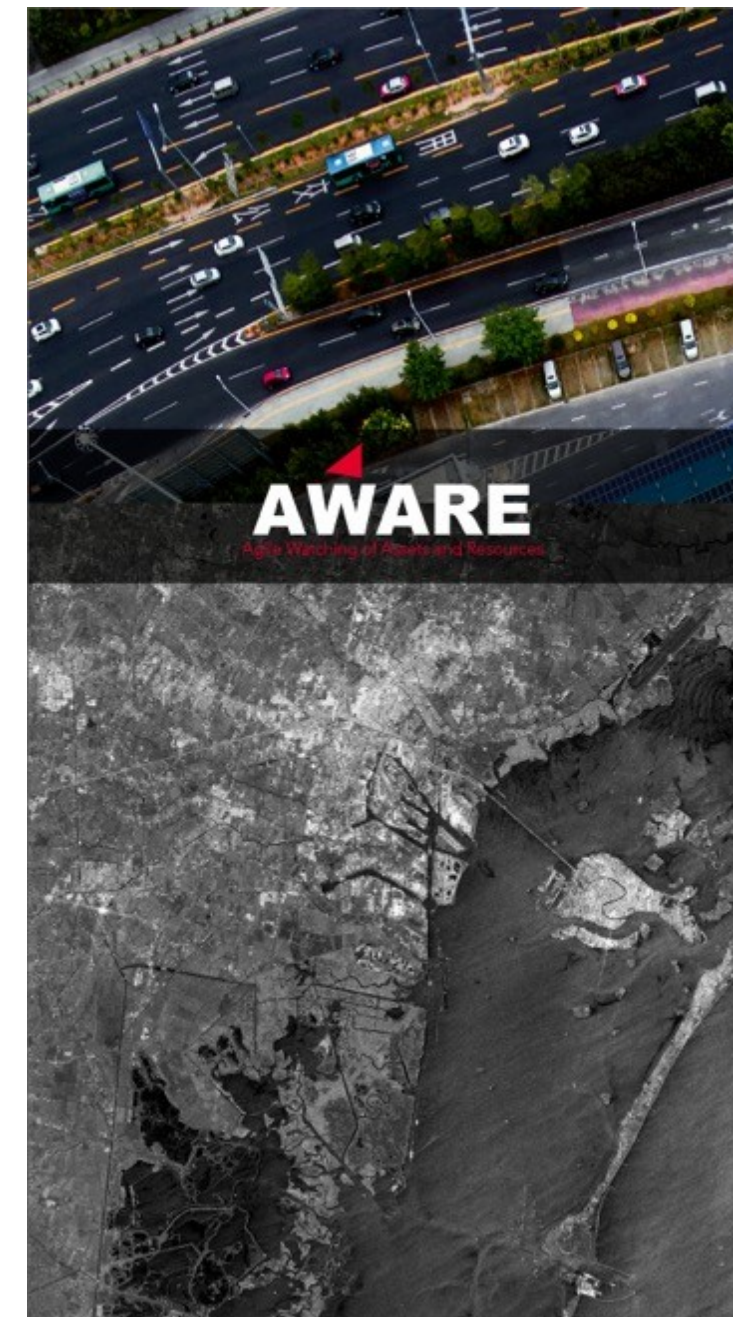
**MARITIME
SURVEILLANCE**



**DEFENCE AND
INTELLIGENCE**



**AGRICULTURE
MANAGEMENT**



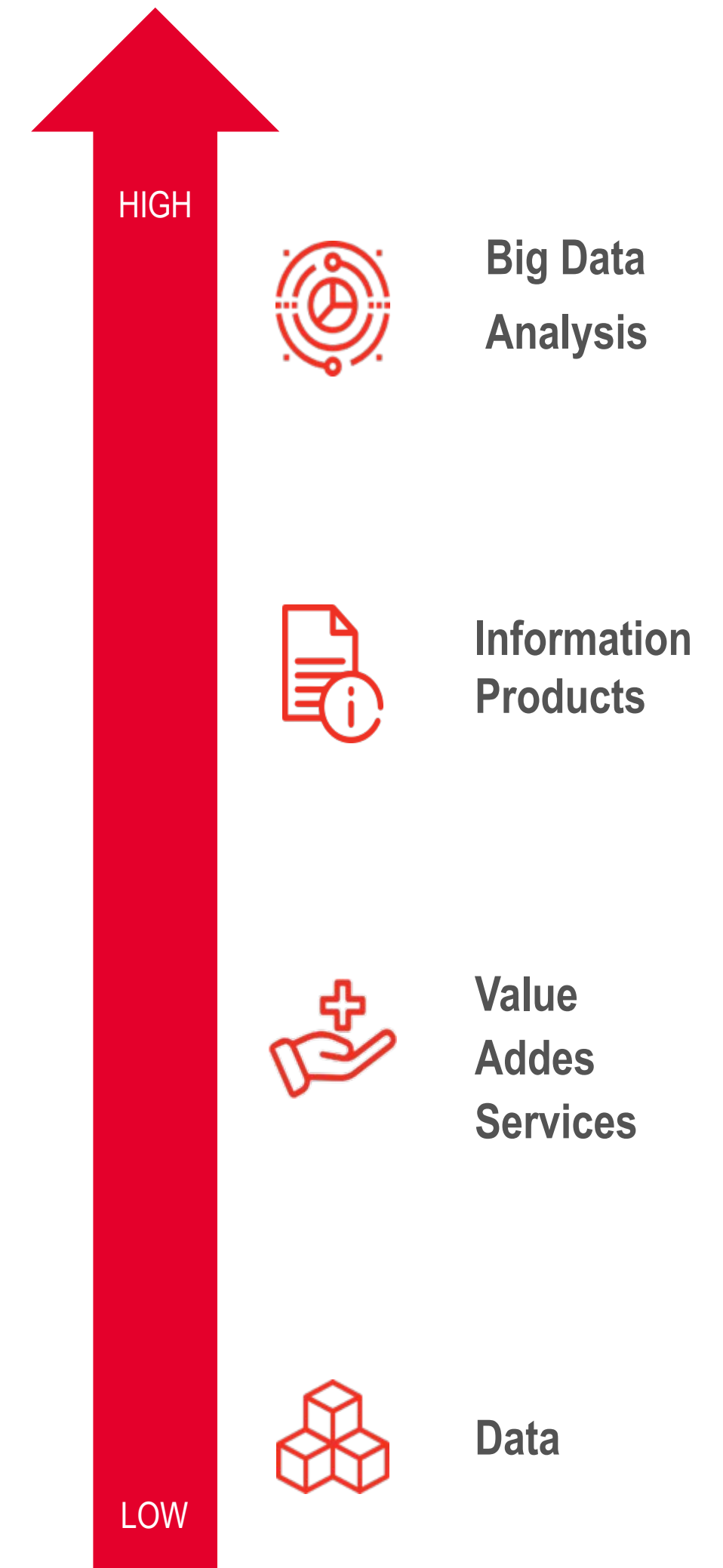
**ASSET
MANAGEMENT**



**EMERGENCY
MANAGEMENT**



The online marketplace to access geo information Analytics & Geoinformation Digital Service, driving the e-GEOS digital transformation process of its portfolio



The Paradigm Shift

From infrastructure ownership



on-demand access

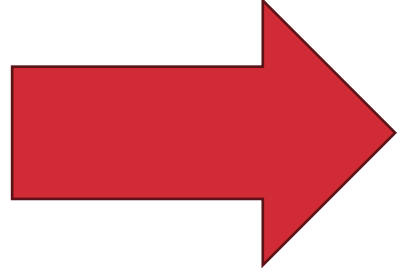
Similar transformation in the Space sector

e-GEOS

making Space accessible | integrated | decision-oriented

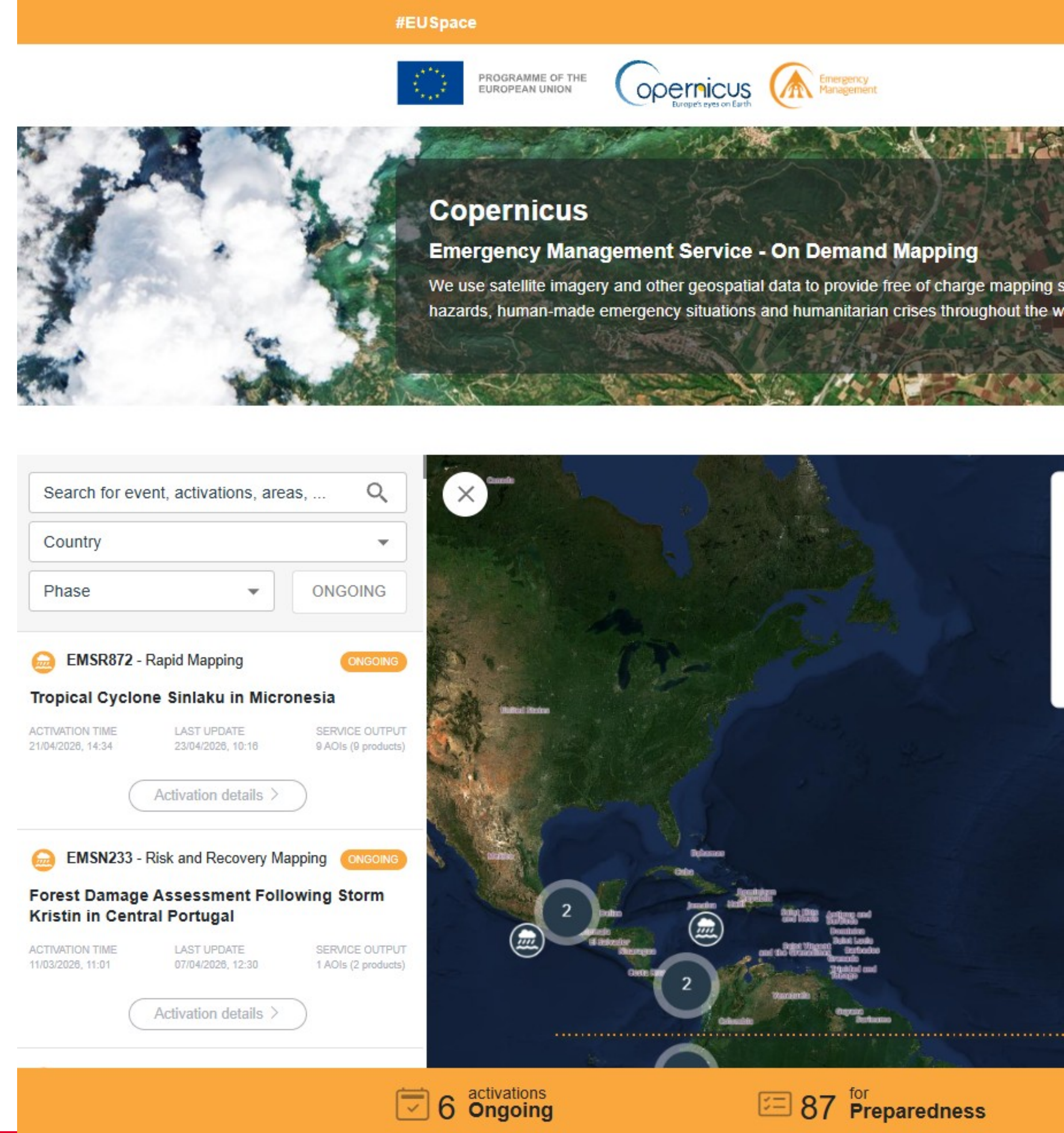


The Paradigm Shift

From infrastructure ownership  on-demand access

From The Traditional Model to Space Infrastructure as a Service

- Infrastructure becomes a service, accessible on demand
- Flexible, scalable, user-friendly
- Open Space capabilities to a wider audience



#EUSpace

PROGRAMME OF THE EUROPEAN UNION

Copernicus Europe's eyes on Earth

Emergency Management

Copernicus

Emergency Management Service - On Demand Mapping

We use satellite imagery and other geospatial data to provide free of charge mapping services for natural hazards, human-made emergency situations and humanitarian crises throughout the world.

Search for event, activations, areas, ...

Country

Phase

ONGOING

EMSR872 - Rapid Mapping ONGOING

Tropical Cyclone Sinlaku in Micronesia

ACTIVATION TIME: 21/04/2026, 14:34 | LAST UPDATE: 23/04/2026, 10:16 | SERVICE OUTPUT: 9 AOIs (9 products)

Activation details >

EMSN233 - Risk and Recovery Mapping ONGOING

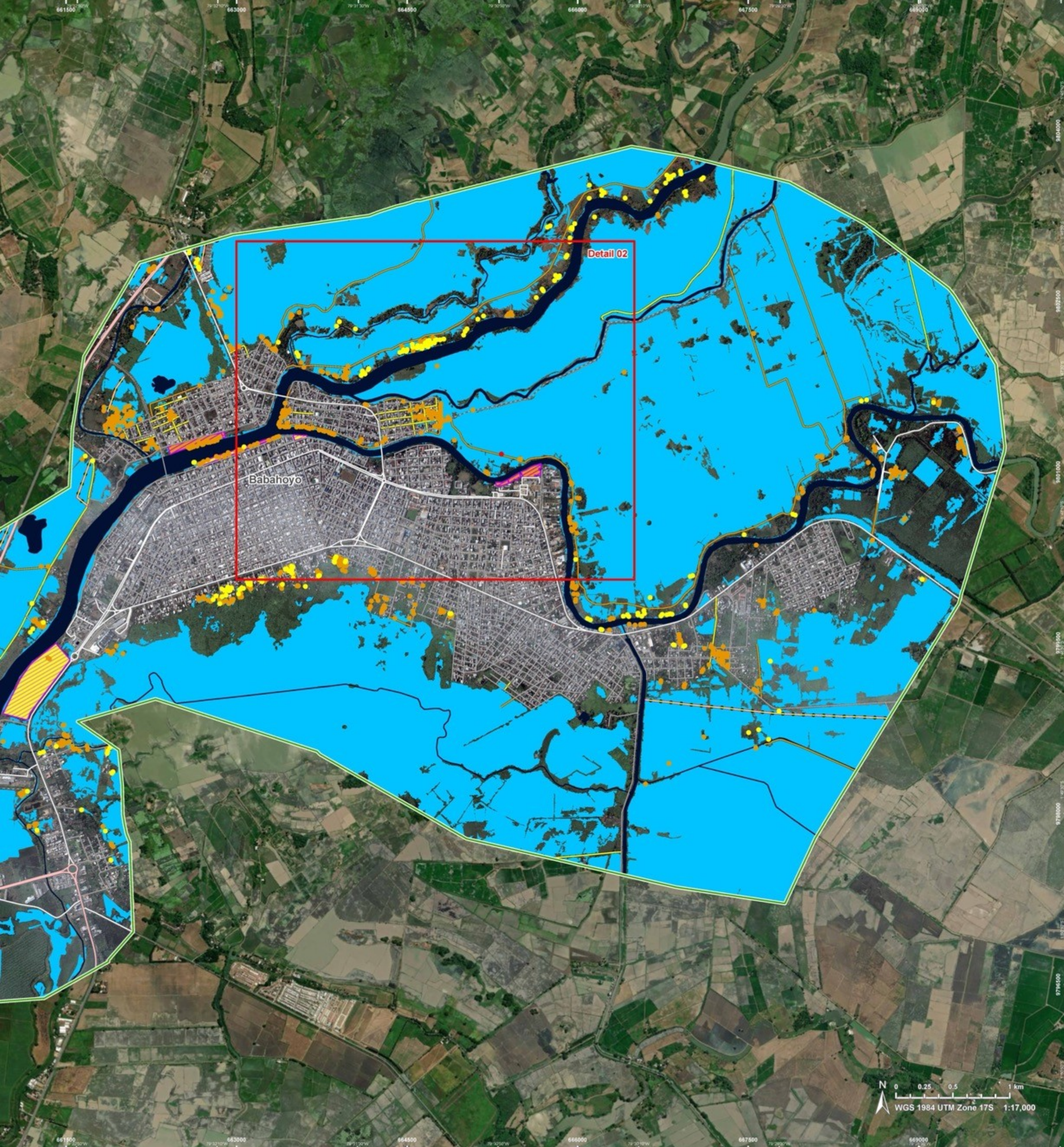
Forest Damage Assessment Following Storm Kristin in Central Portugal

ACTIVATION TIME: 11/03/2026, 11:01 | LAST UPDATE: 07/04/2026, 12:30 | SERVICE OUTPUT: 1 AOIs (2 products)

Activation details >

6 activations Ongoing

87 for Preparedness



GLIDE number: FL-2026-00027-ECU
Int. Charter Act. ID: N/A
GDACS ID: FL 1103761
Product version: 1

EMSR870 - AO13
Flood in Ecuador
BABAHOYO

Situation as of 19/03/2026 21:17 UTC
Grading - Overview map 01

Flooded area: 2,662.1 ha
Potentially affected population: ~ 2,000

Affected Built-up and Transportations

Built-Up: 980 No.
Road: 39.4 km

Crisis Information

- Flooded Area
- Built Up Grading
 - Destroyed
 - Damaged
 - Possibly damaged
 - Long-distance pipeline or line, Possibly damaged
- Facilities Grading
 - Damaged
 - Possibly damaged
- Transportation Grading
 - Road, Damaged

General Information

- Road, Possibly damaged
- Highway, No visible damage
- Main road, No visible damage
- Local road, No visible damage
- Track, No visible damage
- Area of Interest
- Detail map
- Lake, River

Event: In the beginning of March 2026, heavy rainfall has been reported to have affected Ecuador, triggering flash floods, floods and landslides. The event is on-going and affecting large part of the country. The National Secretary for Risk Management asks for Rapid Mapping to analyse the flooded areas across the country. Copernicus EMS Rapid Mapping is requested to provide Delineation products, detection of landslides and estimation of affected population.

Data sources and analysis: Pre-event image: Pliades-1A/B © CNES (2024), distributed by Airbus DS (acquired on 19/12/2024 at 15:47 UTC, resolution 0.5 m). Post-event image: Legion © Vantor (2026), provided by European Space Imaging (acquired on 19/03/2026 at 21:17 UTC, resolution 0.5 m). This image is used as background image. All images are provided under COPERNICUS by the European Union and ESA, all rights reserved.

The thematic layer has been derived from post-event satellite image by means of visual interpretation.

Map produced by Telespazio Iberica released by SERTIT on the 20/03/2026.

Details on this activation and service conditions available through the QR code or at the link: <https://mapping.emergency.copernicus.eu/activations/EMSR870>

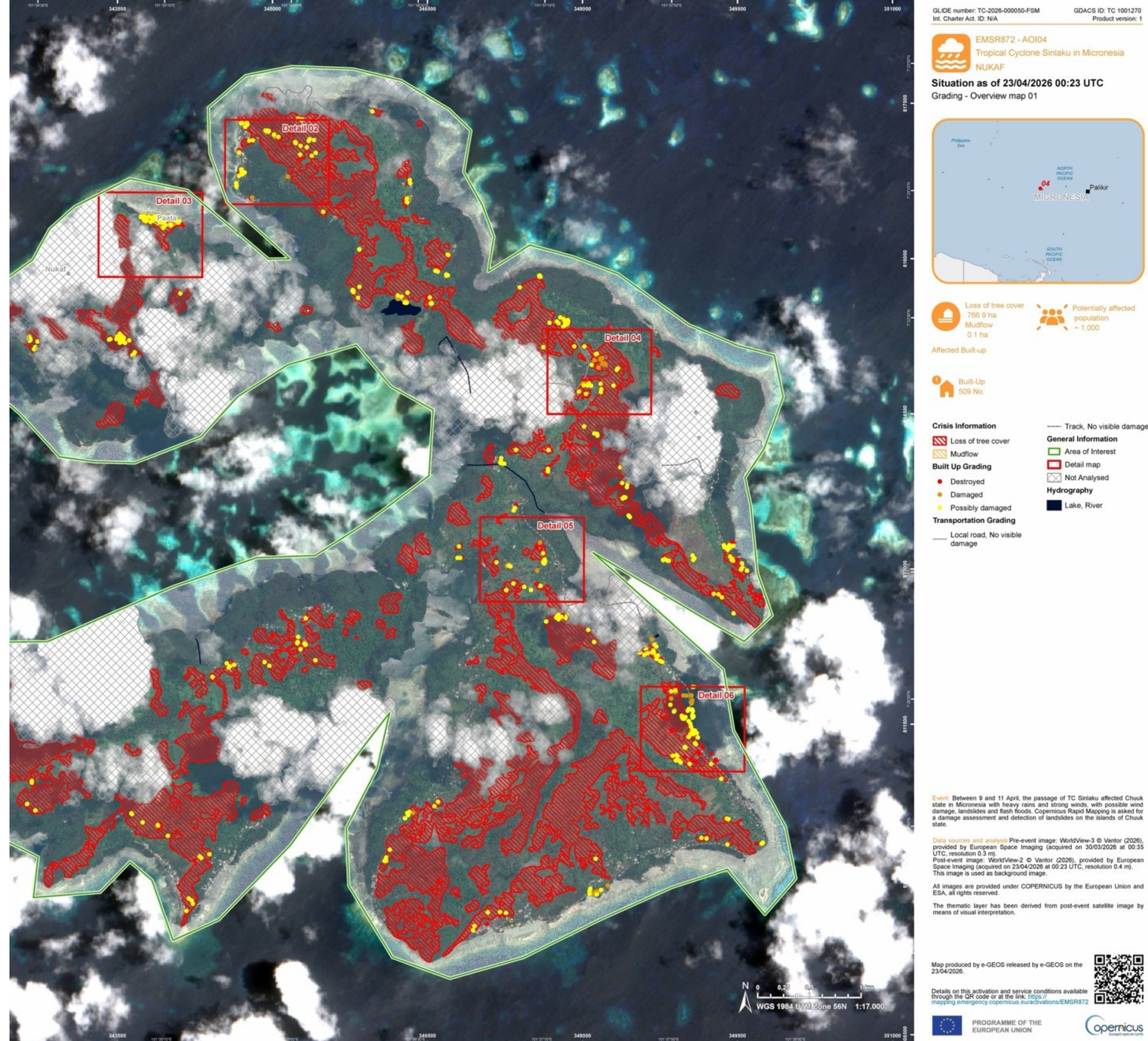
PROGRAMME OF THE EUROPEAN UNION
Copernicus

A User-Centric Approach

- Focus on operational needs, not just data delivery
- From raw data to actionable insights
- Ready-to-use information for decision-making

Real Use Case: Emergency Management

- Automated, on-demand services by e-GEOS
- Workflow:
 - request
 - sensor selection
 - data acquisition
 - processing
- Reduced latency, faster response



The Future: Leonardo Constellation

❖ **Space Segment:** 12 satellites on 2 SSO orbits (complementary to COSMO-SkyMed) at 545 km altitude; 9-day repeat cycle; LTAN at 13:30 and 10:30.

• 6 SAR + 2 OPT + 1 COM

• 6 OPT + 2 SAR + 1 COM

(TBC: final configuration pending)

❖ **SAR Sensors:** VHR Spotlight, Stripmap, and ScanSAR (100 km) capabilities

• Interferometry: 1-2-3-day coherence/revisit.

❖ **Optical Sensors:** VHR capabilities

• Revisit Time: 24-hour global revisit with multiple daily acquisitions.

❖ **Unique Selling Points**

• Natively mixed SAR+OPT system

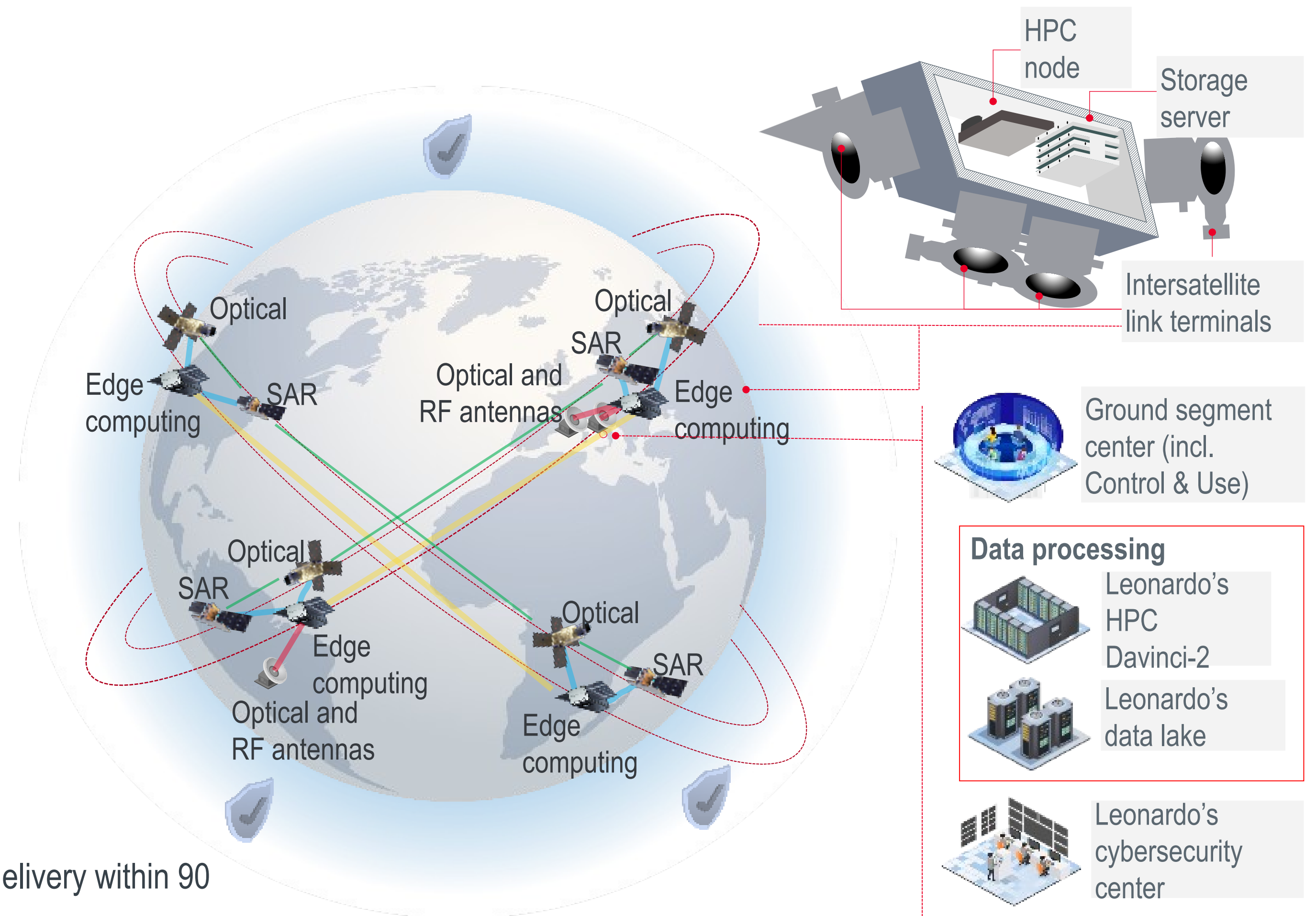
• Guaranteed acquisitions

• ISL between satellites to enable command and data transfer

• On-board HPC to enable real-time analysis and processing

• Latency minimised (orders up to 90 minutes prior to sensing, product delivery within 90 minutes of sensing)

• Integration with CUT and Regional User Terminal



A space-themed background featuring a view of Earth from space, with city lights visible on the dark side. The sun is shining brightly behind the horizon, creating a lens flare effect. The moon is visible in the upper center of the frame.

We Unlock Earth
Thank you for the attention!

e-geos

AN ASI / TELESPAZIO COMPANY

All COSMO-SkyMed images © ASI - Agenzia Spaziale Italiana

e-GEOS S.p.A – L.O. Contrada Terlecchie snc – Matera / HQ Via Tiburtina, 965 – Roma

 info@e-GEOS.it

 [@e_geos](https://twitter.com/e_geos)

 [e-geos](https://www.linkedin.com/company/e-geos)

 [@egeosEO](https://www.facebook.com/egeosEO)

 [@e_geos](https://www.instagram.com/e_geos)