

# Geography: Powering Our Future

Damian Spangrud  
Managing Director, Esri  
[damian@esri.com](mailto:damian@esri.com)



# Geography

Science of Our World

Provides a scientific lens  
for seeing, integrating  
. . . and understanding

Mapping and GIS  
provide a common language

. . . Allowing us to solve problems, together



# Spatial Computing / Geospatial Infrastructure

Provides a Powerful Unifying Approach

Breaking Down Organizational Silos

. . . Enabling Crosscutting Collaboration

*Leveraging Location & Relationships*

*Connecting Data, Services, Organizations, Teams, Individuals, and the Public....*



# GIS Supports Multiple Implementation Patterns



*Supporting Individuals, organizations and entire communities*

# GIS Supports Sovereign, Hybrid, and SaaS Systems

## Sovereign GIS (Local)



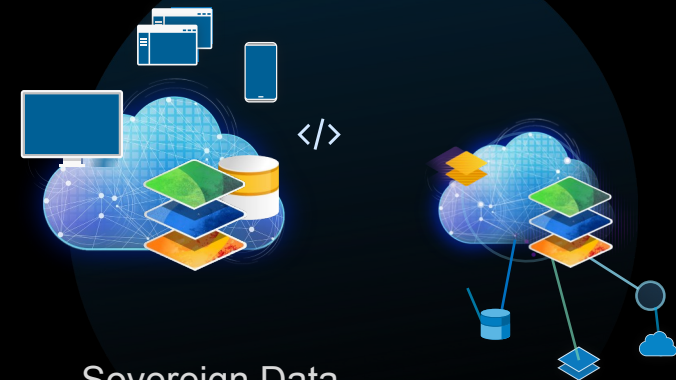
Enterprise Data Management  
Local Infrastructure  
No Internet Required

## SaaS GIS



Web & Enterprise  
Data management  
SaaS + Local files  
Self-service  
Shared Infrastructure  
Internet Dependent

## Hybrid GIS



Sovereign Data  
Enterprise Data Management  
SaaS Scalability  
Supporting Enterprise & Public Access  
Local Resources + SaaS  
Hybrid Infrastructure

*Deployable as: Locally Managed Sovereign Systems,  
on-demand SaaS, or Hybrid*

# GIS Continues Advancing . . .

Integrating and Leveraging Many Innovations

A Whole New Scale of  
Geographic Thinking

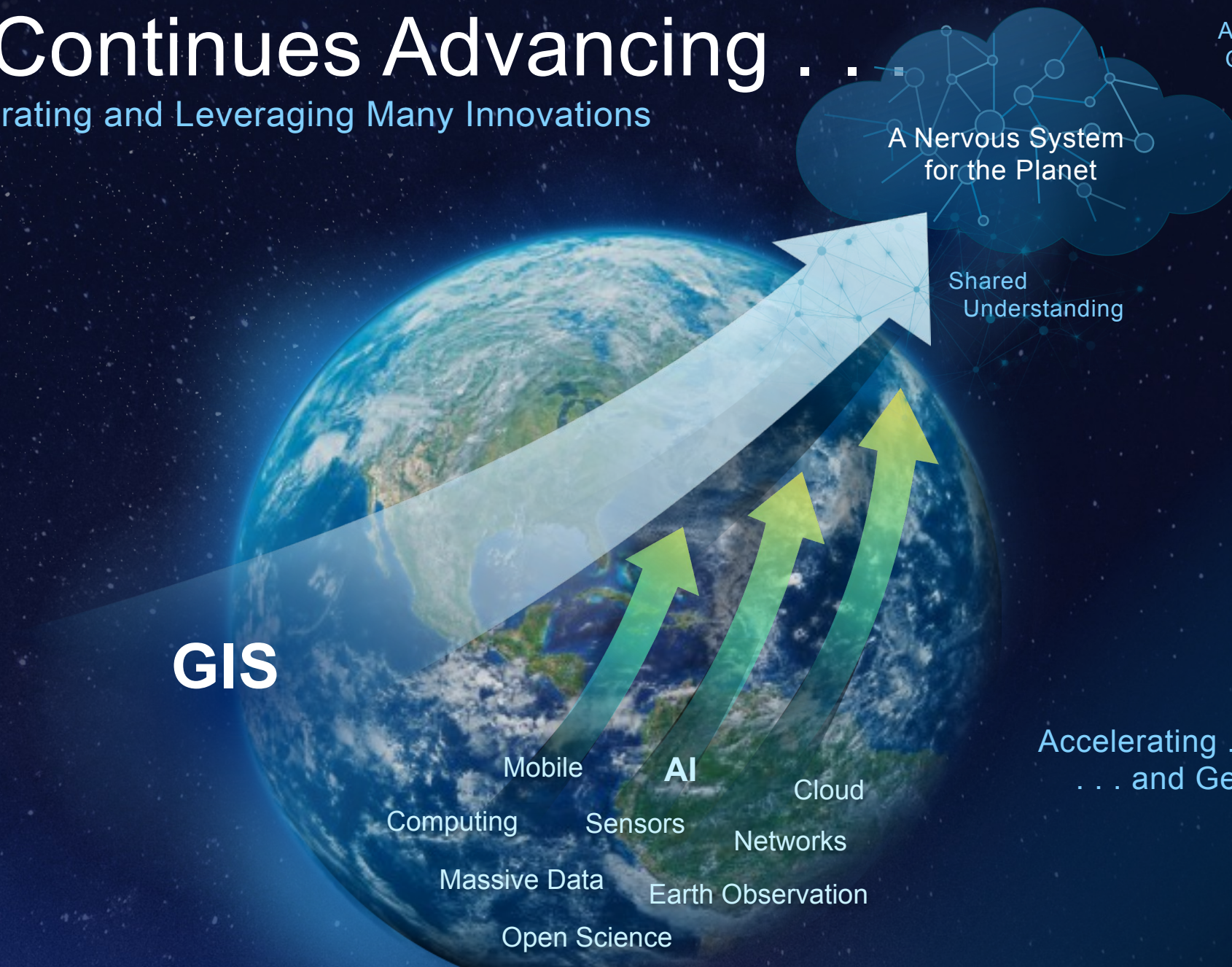
**GIS**

Mobile  
Computing  
Massive Data  
Open Science  
Sensors  
AI  
Earth Observation  
Cloud  
Networks

A Nervous System  
for the Planet

Shared  
Understanding

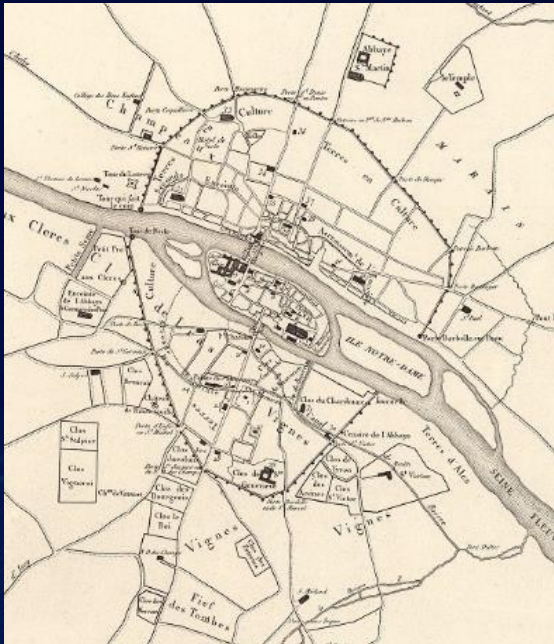
Accelerating . . .  
. . . and Geoenabling  
Everything



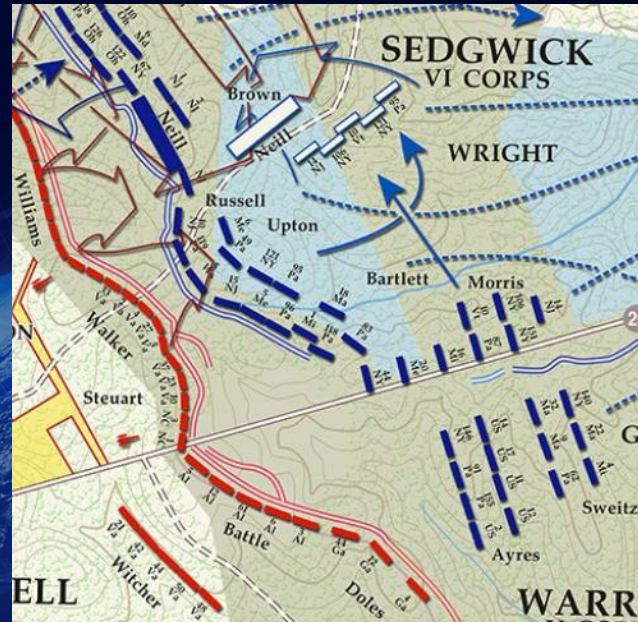
# Digital Twins are the Next Step in the Evolution of Maps

## Maps Have Always

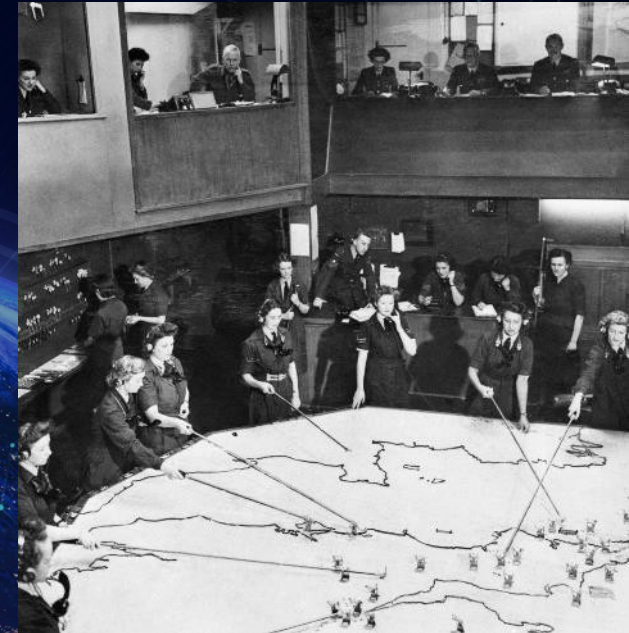
- Abstracted Reality In Order To Allow For Understanding And Action
- Been Critical For Data-Driven Decision Making



Paris  
1223



Battle of the Wilderness (US Civil War)  
1864



Battle of Britain (WWII)  
Analog Twin of Air Defenses

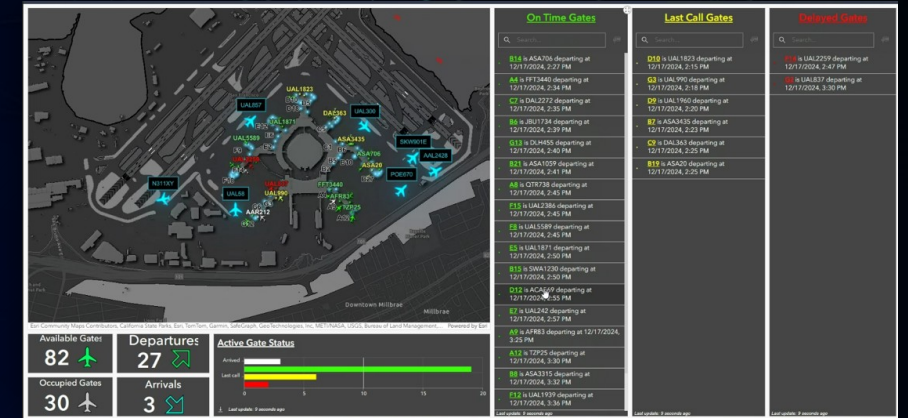
# GIS enables Living Digital Twins of the natural and built environments

... uniquely integrating all types of data, sensors, models and processes.

Increasingly becoming the system of record for assets and environments.

*Connecting planning, operations, risk, and policy.*

*Providing trusted context and platform for understanding.*



# Digital Twins Reflect Organizational Needs



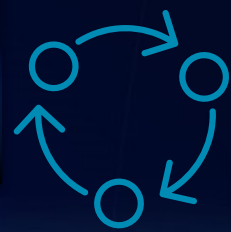
# Digital Twins are Showing Real Business Value . . .

While at the same time . . .

AI is Changing how the types of questions we can ask  
and how we get answers



 GeoAI



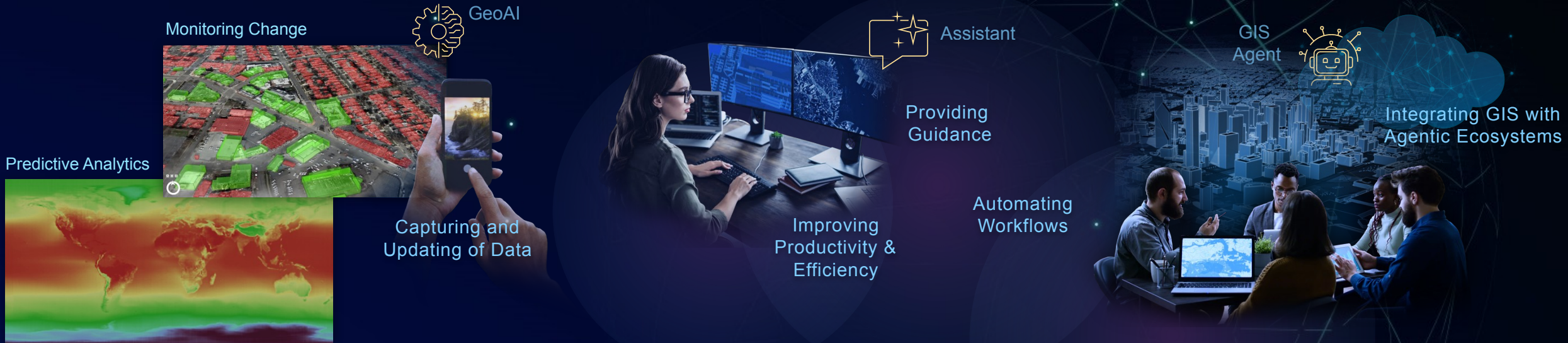
 GIS Agent



 AI Assistants

# AI and The Geospatial Ecosystem

Transforming Insights and Workflows



*Advancing geospatial intelligence through AI-driven models & predictive insight.*

***Spatial Reasoning at Scale.***

*Redefining the user experience with assistants, natural language interaction, and assistive AI.*

***Improving the experience for Everyone***

*Accelerating workflows & connecting systems thru standards.*

***Enabling Tasks and Automation at Scale***

# GIS is a Geospatial AI Platform...



## GeoAI

*Unlocking new insights  
and scale*



## Assistants

*Improving Access, Efficiency and  
Productivity*



## Agents

*Enabling agentic workflows*

*A2A MCP*

trusted

secure



scalable

open

extensible



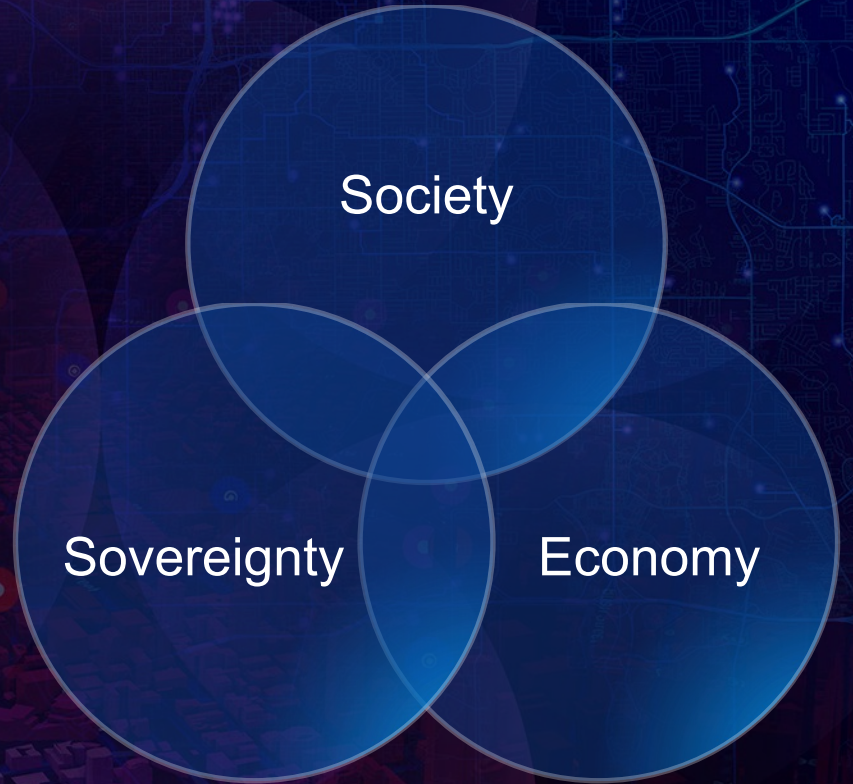
## AI Framework

*Foundational AI Technology*

# Geospatial Thinking & Decision Making is already Transforming Organizations and the World



Having a positive impact on:



# You are Essential in the Evolution of Geospatial

Enabling Geospatial Understanding At Scale

Building & Delivering Practical Systems  
Powered by Geography

Advancing Geospatial AI and Digital Twins

Deploying Sovereign and Connected Systems

*Enabling a Better Future thru the Power of Geography*



Thank you for inviting me . . .

Damian Spangrud  
Managing Director, Esri  
[damian@esri.com](mailto:damian@esri.com)



**esri**

THE  
SCIENCE  
OF  
WHERE®





**esri**<sup>®</sup>

**THE  
SCIENCE  
OF  
WHERE**<sup>®</sup>