

Mapping Agencies as Enablers of a  
**Geospatial Knowledge  
Infrastructure**

From Production to Impact

*Geospatial World Forum 2026*

*Maroale Mimi Chauke*



land reform &  
rural development

Department:  
Land Reform and Rural Development  
REPUBLIC OF SOUTH AFRICA



# The History

Centralized national mapping through the National Mapping Agency (NMA) formerly known as Chief Directorate: Surveys and Mapping (CDSM) now CD: National Geospatial Information  
Geospatial data capability only limited to NMA. i.e. Land Surveying Act , 1997



## Authoritative Producer

Legal mandate to serve as the single source of all base geospatial information



## Dataset Custodian

Owner and compiler of national datasets  
Responsible for collecting, compiling, and publishing



## Essential

Sole mandate was critical



land reform &  
rural development

Department:  
Land Reform and Rural Development  
REPUBLIC OF SOUTH AFRICA



# The Current Situation

Mapping is no longer centralized - Geospatial data capabilities are now distributed across multiple organs of state, decentralizing the mapping landscape to other organs of state i.e.:

- Land Surveying Act , 1997
- National Environmental Management Act 107 of 1998
- South African National Space Agency Act 36 of 2008, etc.



## Base dataset coordination to produce authoritative datasets

Mapping is no longer limited to NMAs, everyone can contribute. Base Data Custodians report to Base Data Coordinators



## Dataset Integration

Driven by the challenges we face today - poverty, climate, and security require timely, trusted, and interoperable location information



## Essential but Insufficient

That mandate remains critical, but geospatial data is now driven by immediate operational needs



land reform &  
rural development

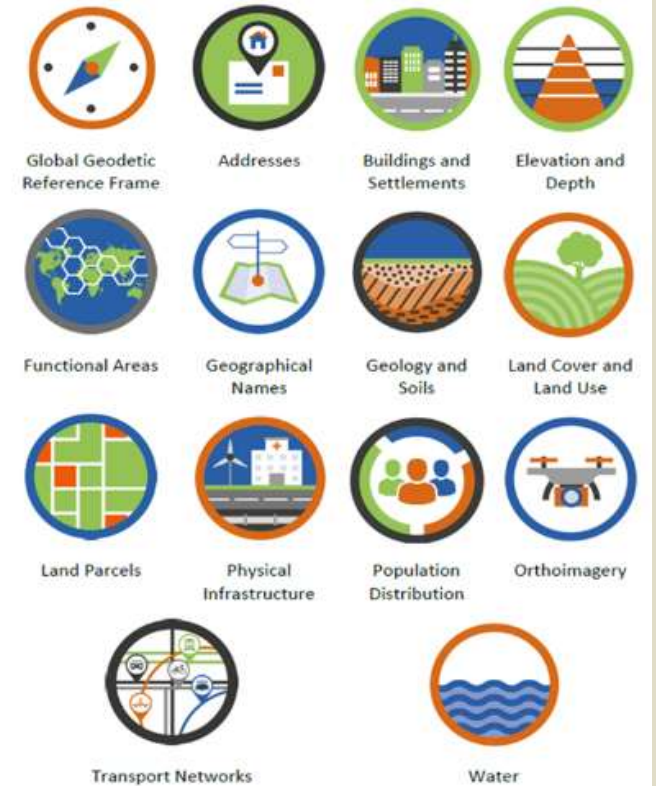
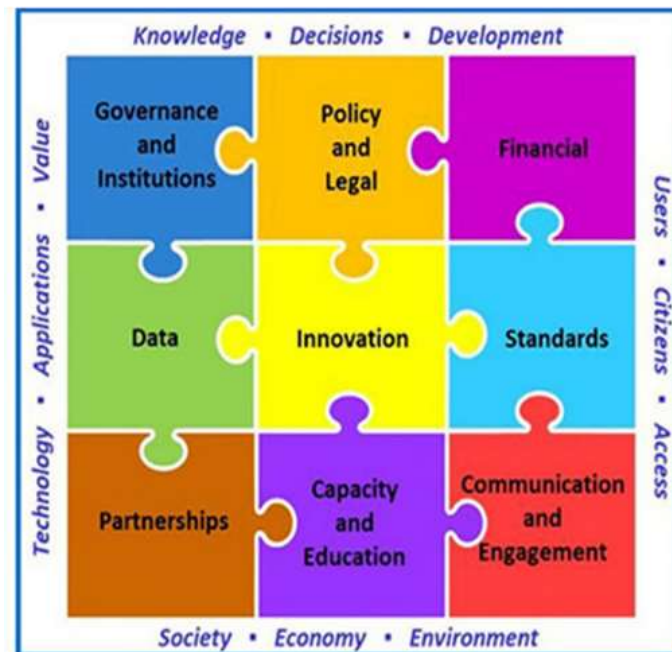
Department:  
Land Reform and Rural Development  
REPUBLIC OF SOUTH AFRICA



# The Global Perspective



**UN-GGIM**  
 UNITED NATIONS  
 COMMITTEE OF EXPERTS ON  
 GLOBAL GEOSPATIAL  
 INFORMATION MANAGEMENT



**land reform &  
 rural development**

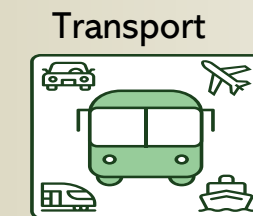
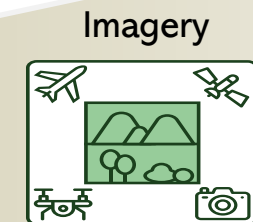
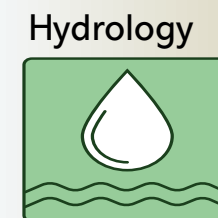
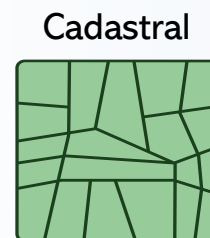
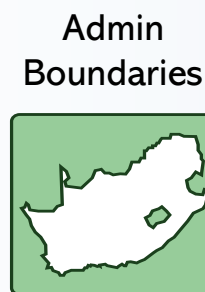
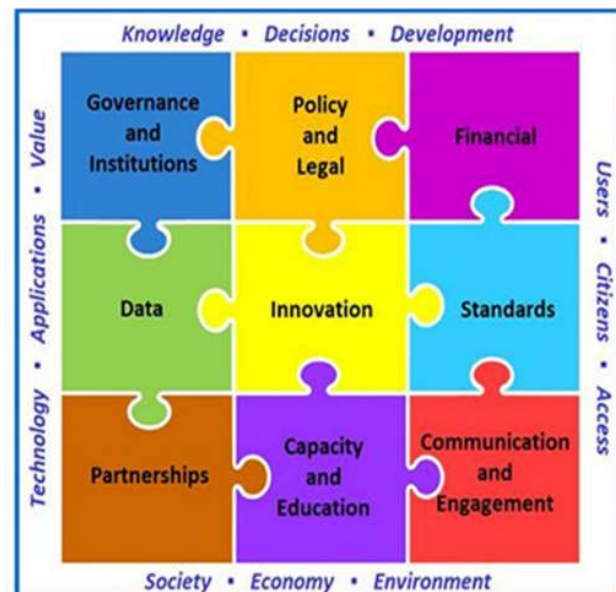
Department:  
 Land Reform and Rural Development  
 REPUBLIC OF SOUTH AFRICA



# The South African Perspective



South African  
Committee for  
Spatial  
Information



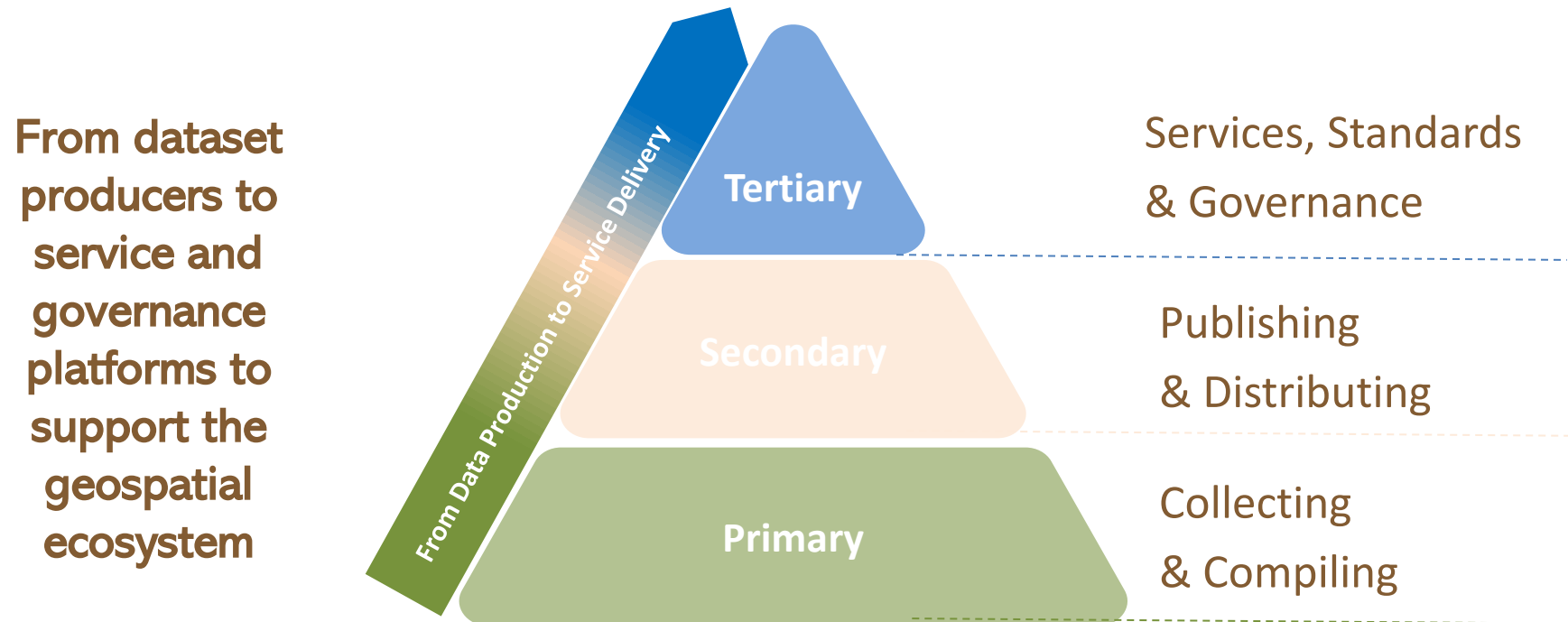
land reform &  
rural development

Department:  
Land Reform and Rural Development  
REPUBLIC OF SOUTH AFRICA



# From Producers to Enablers

How do we reposition mapping agencies as key enablers of GKI?  
Move up the value chain..

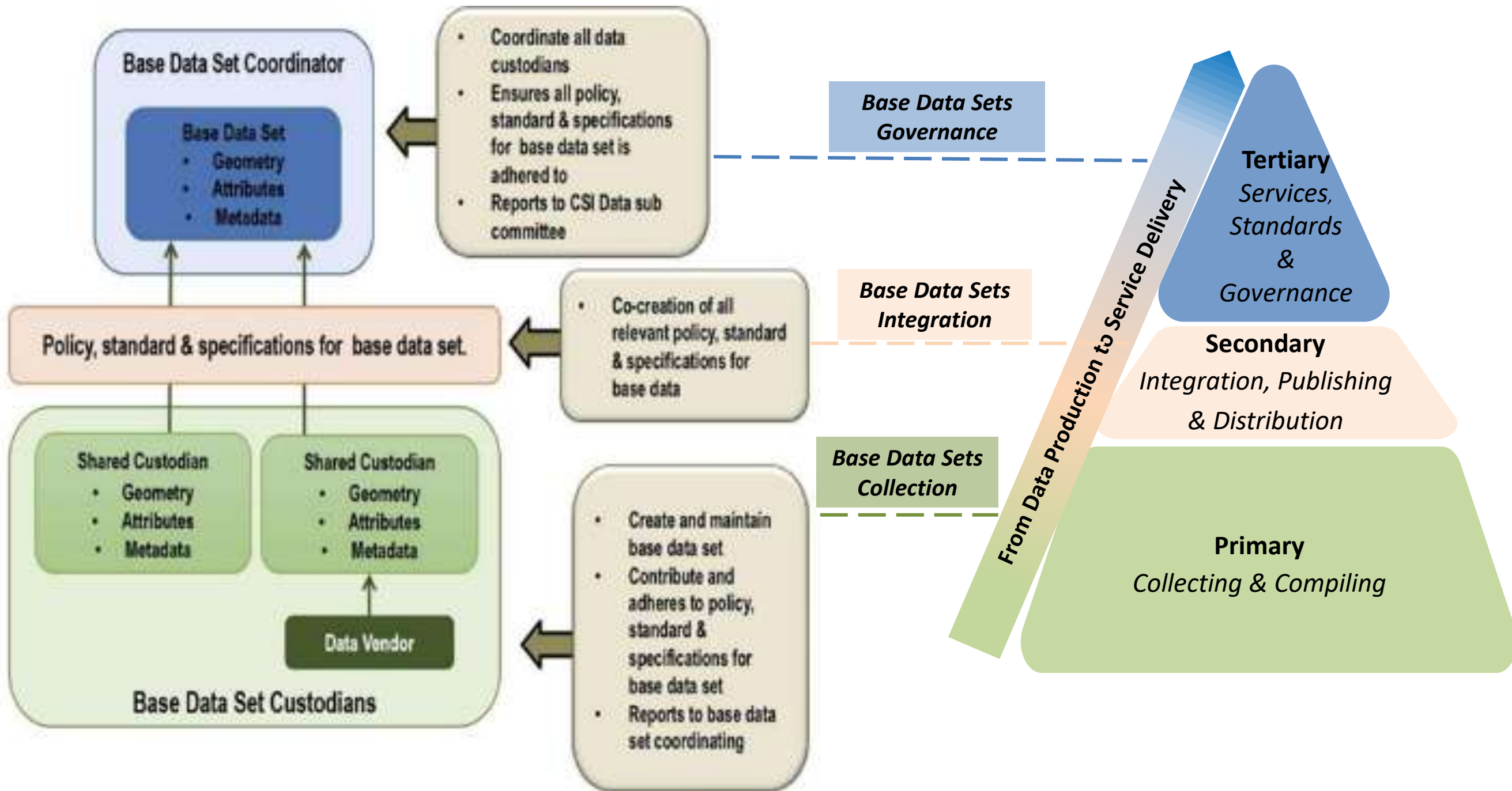


land reform &  
rural development

Department:  
Land Reform and Rural Development  
REPUBLIC OF SOUTH AFRICA



# The Custodianship Model



land reform & rural development

Department:  
Land Reform and Rural Development  
REPUBLIC OF SOUTH AFRICA



# Redefining the Role: Geospatial Integrator & Standards Authority - Redefining the Brand: National Geospatial Agency



## Methodologies & Processes

Setting the rules that ensure what everyone collects can be trusted and integrated



## Standards & Quality

Maintaining provenance, comparability, and trust across all producers to support data integration.



## Integration Platform

Connecting ecosystems so operational and central data stay aligned. From SDI to living geospatial ecosystems



## Thought Leadership

Driving innovation in technologies and methods for the entire ecosystem – Create Knowledge driven systems



land reform &  
rural development

Department:  
Land Reform and Rural Development  
REPUBLIC OF SOUTH AFRICA



# The outcome:

- Equal access to trusted geospatial information.
- Everyone can trust it, integrate it, and use it to make better decisions.
- Geospatial data is available everywhere, for everyone.



land reform &  
rural development

Department:  
Land Reform and Rural Development  
REPUBLIC OF SOUTH AFRICA



*When data is accurate, information becomes reliable,  
knowledge becomes sound, and decisions write themselves.*



land reform &  
rural development

Department:  
Land Reform and Rural Development  
REPUBLIC OF SOUTH AFRICA

