

ORACLE

# From Earth Observation to Action: GeoAI for End-User Empowerment

GWF 2026, Technical Track – GeoAI

---

**Hans Viehmann**

Director Product Management

Oracle Spatial and Graph

April 30, 2026

**We're collecting massive volumes of data ...**

**But we have an issue turning data into action.**

# Employee empowerment is needed



Non-experts face difficulties turning geospatial data into action



GIS specialists are scarce and benefit from improved efficiency



# The AI Journey: Agentic AI evolves AI from **Answers** to **Actions**



As Karim Lakhani says in the  
**Harvard Business Review:**

**“AI won’t replace humans —  
but humans with AI  
will replace humans without AI”**

**The same applies to enterprises**

# Oracle Perspective: GeoAI as an Enterprise Capability



## Converged database

Integrated data platform

Enterprise data and spatial data

Vector search

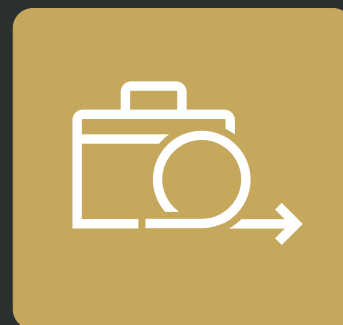


## Spatial data

Vector, raster, LIDAR, Networks

Spatial analysis

Vector AI, Raster AI



## Enterprise workflows

Platform with spatial data embedded

Streaming support

Security and high availability built in



## GenAI and Agentic AI

Agent factory and prebuilt agents

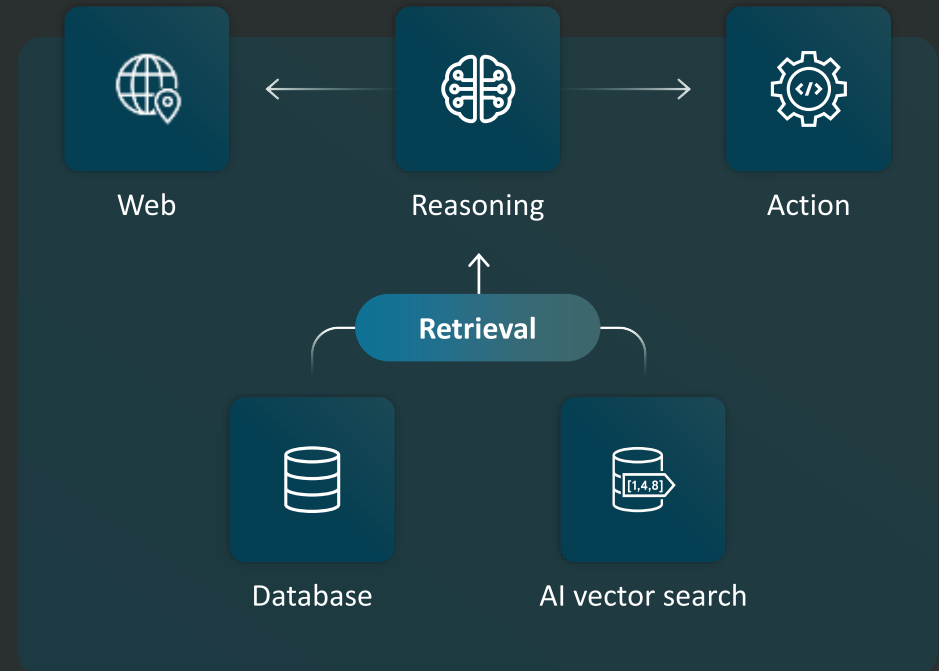
Based on security framework

Open standards for models, deployment, ..

# Building AI Agents inside Oracle Autonomous AI Database

Building blocks to easily develop, deploy, and manage **in-database** AI agents

- **Select AI Agent**
  - Built-in ReAct pattern and in-database tools
- **Private Agent Factory**
  - No-code platform for agent development / deployment
- **Agent Memory Core**
  - Automatic and secure local agent memory
- **MCP Server**
  - Integrate with popular agentic frameworks



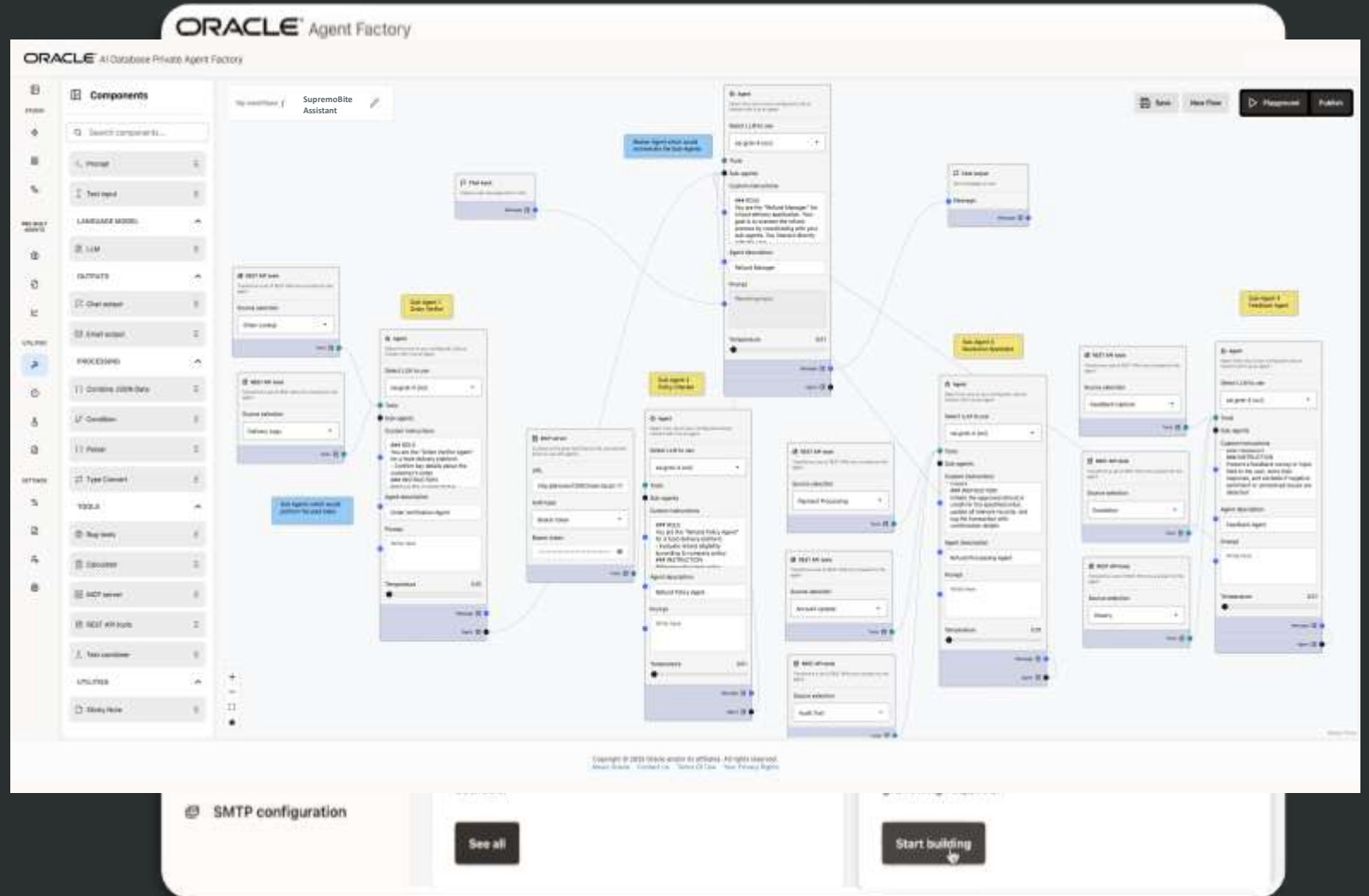
# Oracle AI Database Private Agent Factory

**No-code platform:** to help rapidly build, test and deploy intelligent data-centric agents and workflows

**Pre-built agents:** Knowledge agent for RAG workflows, Data analysis agent for NL2SQL

**Deep Database Integration :** All database features can be consumed in agentic workflows

**Deploy Anywhere :** On-premises, on private cloud, on multi-cloud within your own tenancy



# Agentic GIS with CARTO on Oracle

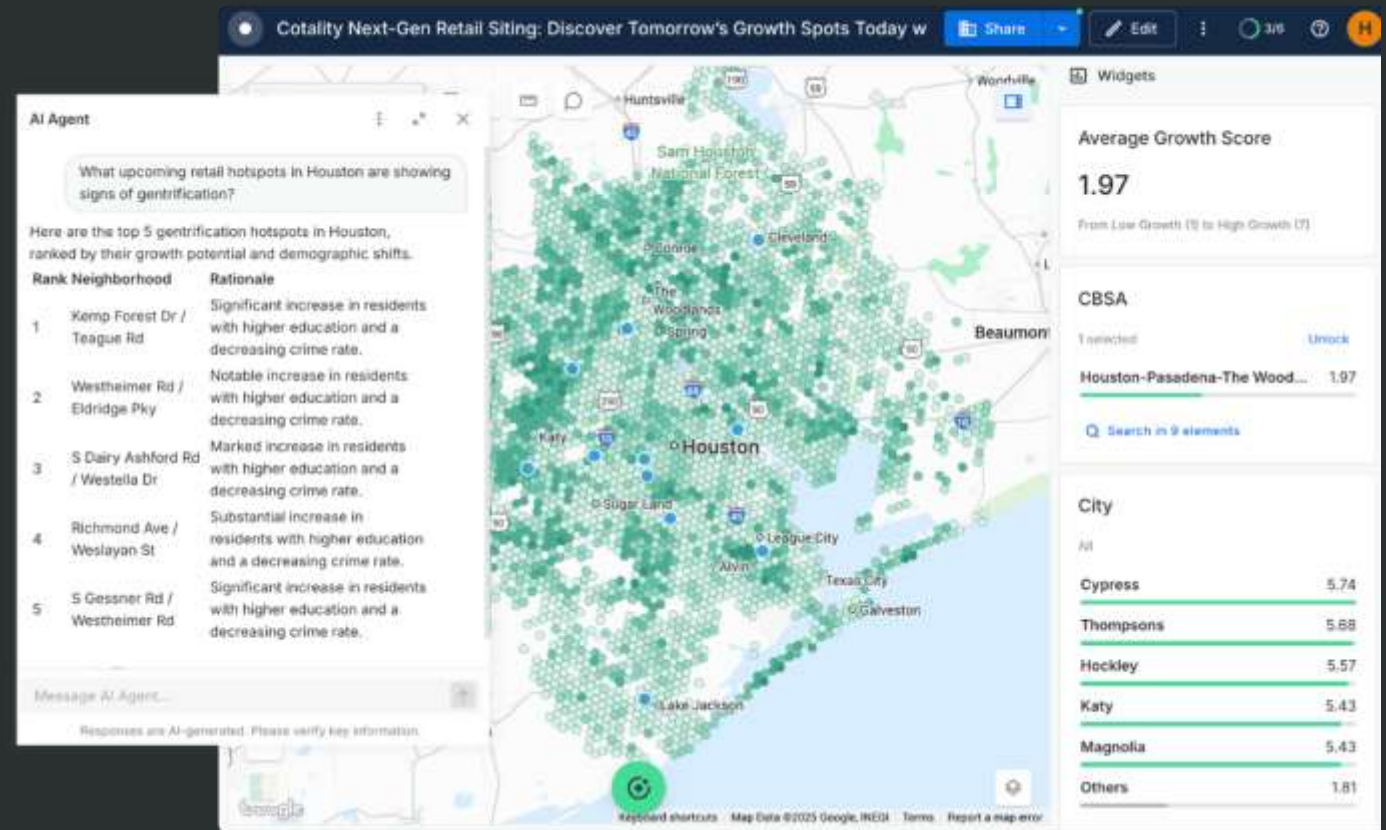
Currently in Limited Availability

**Fully cloud-native AI:** Your data never leaves your lakehouse.

**Enterprise-Grade Security:** Uphold your security and governance standards by using your approved LLMs & end-points for unparalleled trust and control.

**Explainable AI:** Embed geospatial explainability directly within your agent frameworks, building trust and transparency.

**Seamless Integration:** Effortless integration with your Oracle Autonomous Database, and AI provider of choice.



# Summary – from Data to Decisions

Empowering end-users to turn geospatial data into action

## The challenge

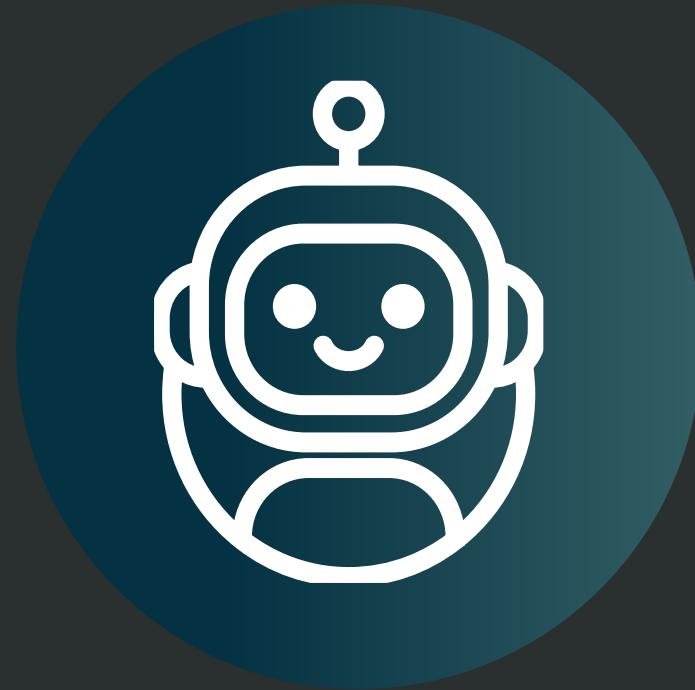
- Massive geospatial data
- Limited operational impact

## The GeoAI shift

- From analysis → to action
- From tools → to platforms

## The enablers

- Agentic AI (automation)
- Natural language (accessibility)
- Integrated platforms (execution)



# Learn more and get hands-on

## Oracle LiveLabs



Free Tutorials and Labs



[livelabs.oracle.com/adb](https://livelabs.oracle.com/adb)

## Oracle Autonomous AI Database Free Trial



Cloud and Local VM Dev options



[oracle.com/autonomous-database/free-trial](https://oracle.com/autonomous-database/free-trial)

## Autonomous AI Database Learning Lounge



Free Live Webinars with Oracle PMs



[oracle.com/goto/adb-learning-lounge](https://oracle.com/goto/adb-learning-lounge)

ORACLE