

An aerial photograph of a multi-lane highway bridge. A white grid of lines is overlaid on the bridge and the surrounding landscape, which includes green fields and some trees. Several cars are visible on the bridge. A semi-transparent dark grey box is overlaid on the left side of the image, containing white text.

ECRM: A foundation for future pan-European high-value datasets

30th April 2026

CONNECTING YOU TO MAPS, GEOSPATIAL AND LAND INFORMATION FOR EUROPE



#MAPSFOREUROPE

The voice of Europe's National Mapping, Cadastral & Land Registry Authorities



Members use cutting-edge technologies to collect, maintain and deliver the geospatial data we all rely on every day

Enabling **access to members' data** and expertise



Representing **members' interests**



Providing opportunities for **knowledge exchange**



Helping to protect people and the planet by providing critical data for reporting and monitoring the UN Sustainable Development Goals (SDGs)

55+ members



44 countries



66K experts



across geographical Europe

Investing **1.5B** each year to provide official national geospatial data

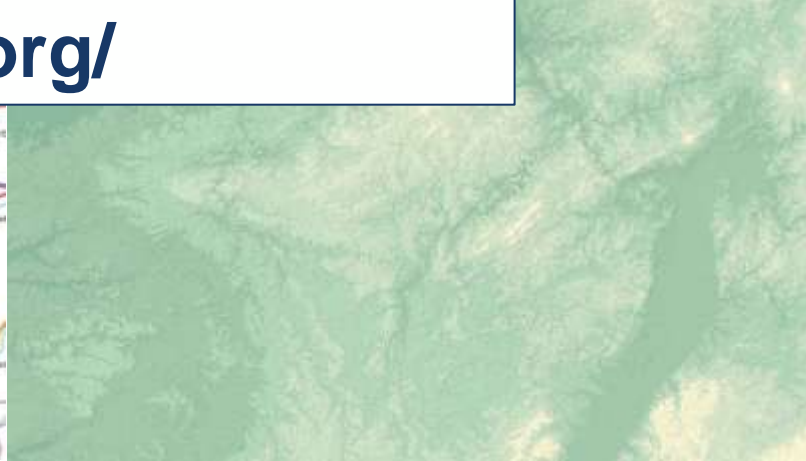


Trusted by European and international institutions, government, businesses and citizens

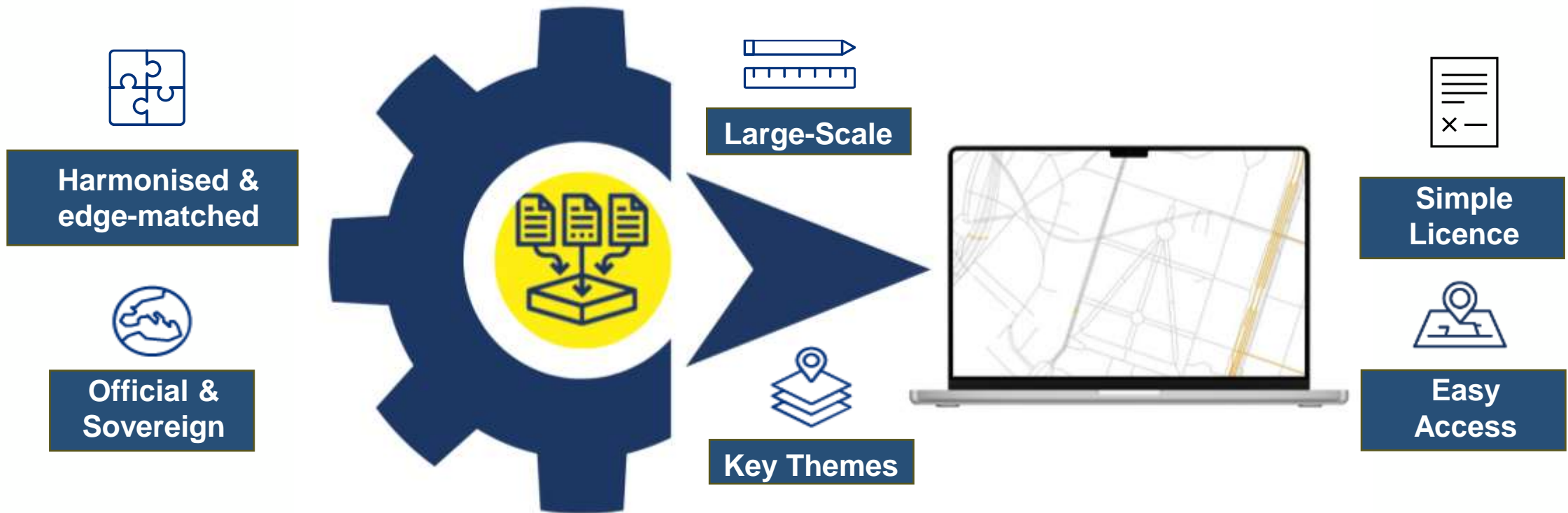




Providing Easy Access to pan-European datasets
<https://www.mapsforeurope.org/>



Solves complex challenge of delivering usable sovereign pan-European data through collective action



Turns EU rules for high-value geospatial information into a cross-border data solution



EuroCoreReferenceMap

A one-of-kind dataset with a unique proposition

The **only high-value large-scale pan-European** dataset:

- Developed through a **unique production process underpinned by national expertise** in integration of core geospatial data.
- Created using **authoritative national data and offering initial EU27+CH coverage** with a vision to use data from all members.
- **Harmonised and edge-matched** to deliver the data that users have said they need and want: administrative boundary, transport network, hydrography.
- **Licensed to end users** to enable as much coverage and data inclusion as possible

Vision for ECRM

Euro Core Reference Map (ECRM):
Creating a new authoritative foundation for
cross-border applications in Europe

- **Pan-European coverage (EU27 + X):** harmonised and edge-matched data across national borders
- **Large-scale (~1:10 000):** consistent high-resolution topographic information
- **Authoritative data:** trusted official sources from national mapping agencies
- **3 themes:** Admin, Hydro and Trans



ECRM Consortium

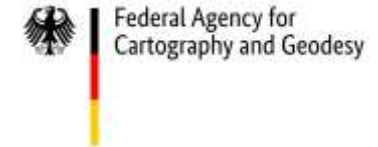
We have the expertise and are investing in the development ...

EuroGeographics



- Project management and coordination
- Engagement of stakeholders
- Communication and dissemination

Federal Agency for Cartography and Geodesy



- Interaction with data producers
- Data production and management of yearly versions

French National Institute of Geographic and Forest Information



- Technical coordination
- Maintenance and development of tools and the production platform

Kadaster Netherlands



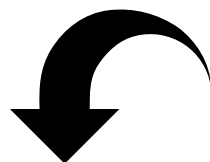
- Maintenance and development of quality control and generalization tools



Official geospatial data – A valuable & trusted sovereign asset for Europe

Context + Clarity = Connections

Enabling cross-border applications



Decisive action
Maximum impact



**An essential component of national, European and global
critical infrastructure**

Benefits for Defence

By delivering large-scale harmonised pan-European geospatial data, EuroCoreReferenceMap:

- Delivers a **harmonised foundational dataset that users can be confident is consistent** regardless of its national source.
- **Supports accelerated decision-making and strengthens users' digital sovereignty** through trusted European data infrastructure.
- Provides users with **access to an established, institutionally backed geospatial system** and proven interoperability standards.



Visit the portal now at
<https://www.mapsforeurope.org/>

Thank you

Contact:
angela.baker@eurogeographics.org