

# WyACT

## WYOMING ANTICIPATING THE CLIMATE-WATER TRANSITION

WyACT is pushing the boundaries of how science is use-inspired and co-produced through the lens of climate impacts on the water cycle. Western Wyoming mountains are headwater regions for major river basins. Changes will impact the region as well as densely populated downstream regions.

[SUBSCRIBE TO NEWSLETTER](#)

### Navigation

[← Main Page](#)

OBSERVATION AND MODELING

[LEARN MORE](#) →

Making of ... a science documentary

SOCIAL AND ECONOMIC RESEARCH

Disturbance on Sagebrush Ecosystems

KNOWLEDGE CO-PRODUCTION

WY-Adapt takes a geospatial thru-hike

INTEGRATED MODELING

RESEARCH BLOG

Wind River water use

VIDEOS AND PRESENTATIONS

Rancher adaptation

Search this site...



WYOMING

**NSF EPSCoR**

ADVANCING GEOGRAPHIC DIVERSITY IN STEM



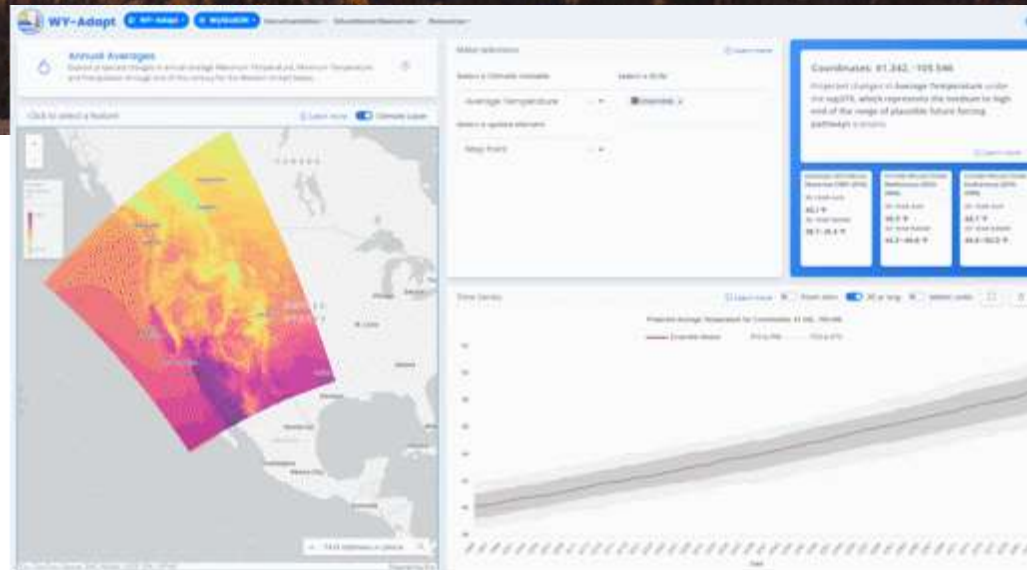
UNIVERSITY OF WYOMING





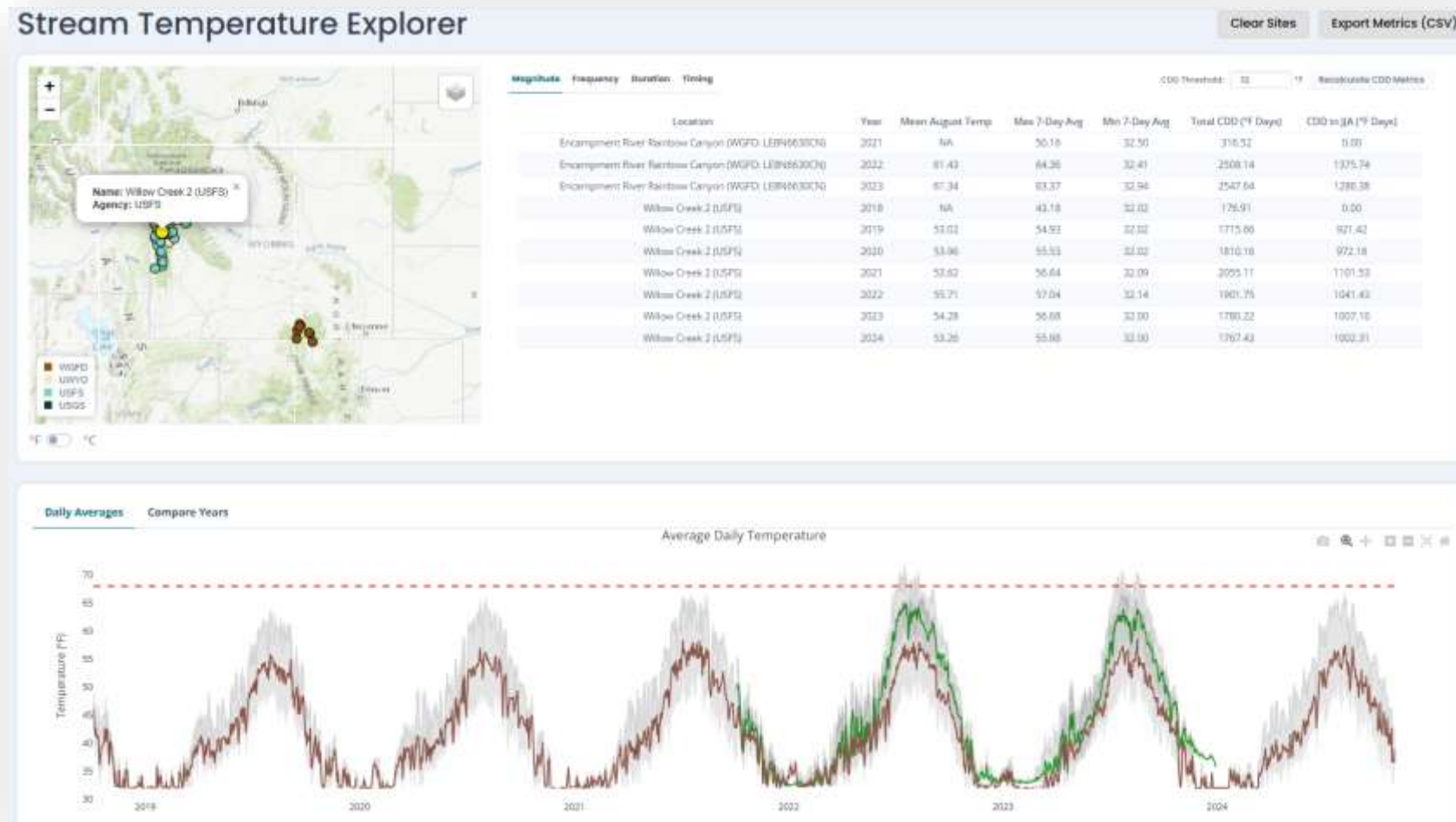
# Examine and Interpret Wyoming's Climate Projections!

A tool for climate adaptation planning, building resilience, and promoting community involvement in Wyoming. Built for everyone.



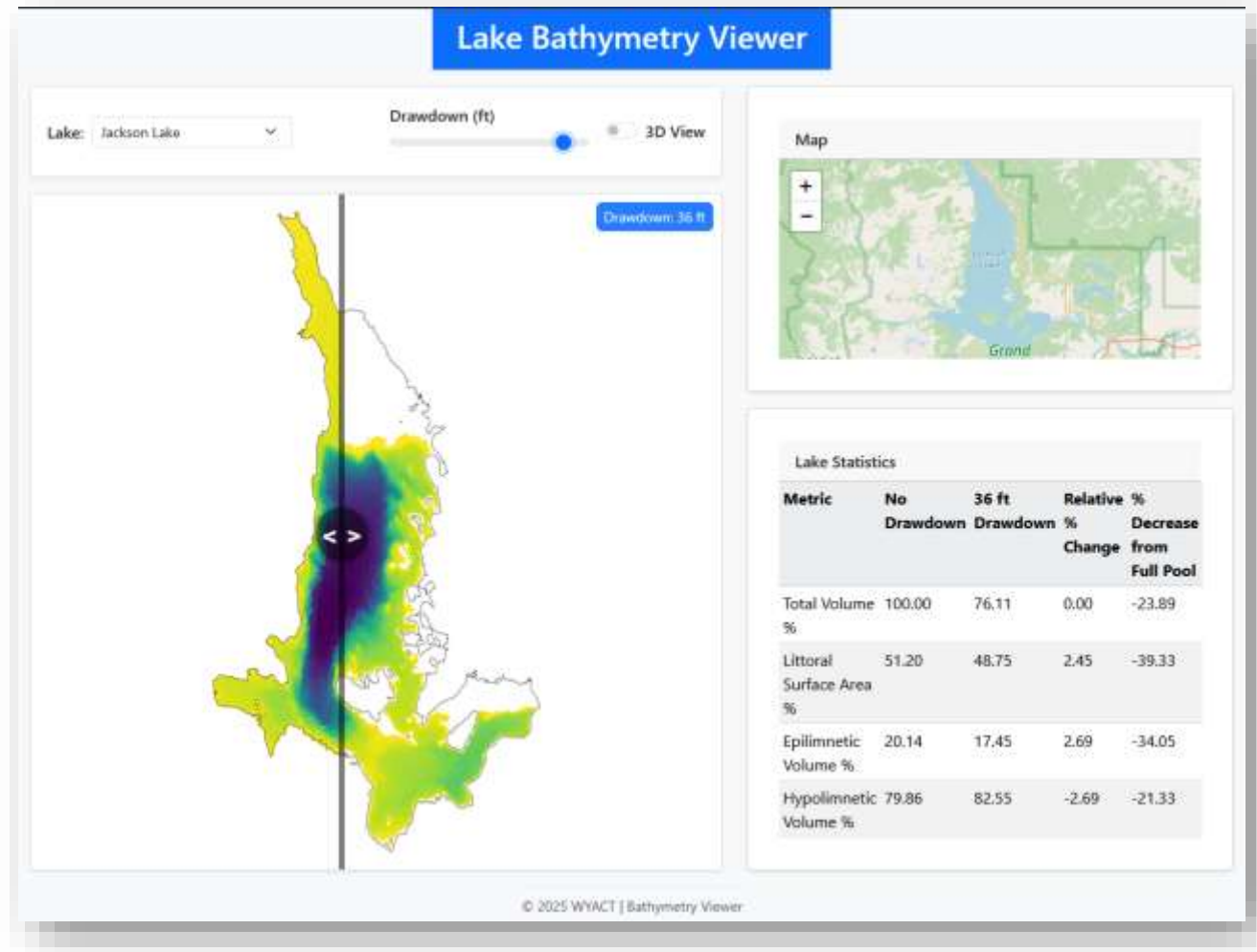
# WyAdapt – Gateway to Research Products

- Stream Temperature Explorer
  - Sage Wright (**undergrad**) collaboration with WGFD



# WyAdapt – Gateway to Research Products

- Lake Level Explorer



# WyAdapt – Gateway to Research Products

- Wyoming Survey on Climate, Water, and People
  - Collaboration with Kristen Landreville



# WyAdapt – Gateway to Research Products

- Climate Comparison Tool
  - TRKE/Teacher request



<https://wyadapt.org/trke-resources-hub/trke/>

