



**LANDSHIFT**

Balancing Land Use Through Innovation and Beauty

**EARSC**

European Association  
of Remote Sensing  
Companies



**valorada**

VALIDATED LOCAL RISK  
ACTIONABLE DATA  
FOR ADAPTATION



**GWF**

GEOSPATIAL WORLD FORUM  
CONFERENCE & TECH SHOW

**Geospatial World Forum**  
**27-1st May 2026**

**Panel Discussion: Strengthening Disaster Management  
through Integrated Geospatial Systems**

01/05/2026

Francesca Piatto, EARSC



Funded by  
the European Union

*The LandShift project has received funding from the European Union's Horizon Europe Research and Innovation Actions Programme under Grant Agreement No. 101182007*



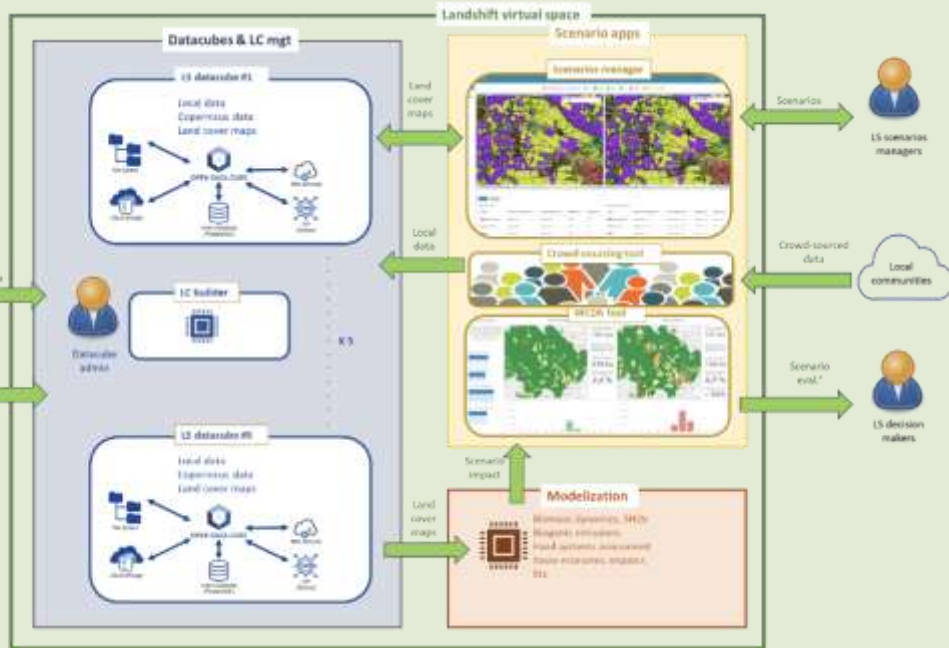
# Why current disasters management falls short

- Climate extremes + land-use pressures = rising risk
- Policy frameworks for adaptation and risk management are in place at national and EU level
- Data exists but is:
  - siloed
  - not decision-ready
  - not integrated across sectors
  - fragmented data towards usability
  - Technical integration only
- Result: limited ability to test *“what-if” scenarios*



# The LandShift and Valorada approach

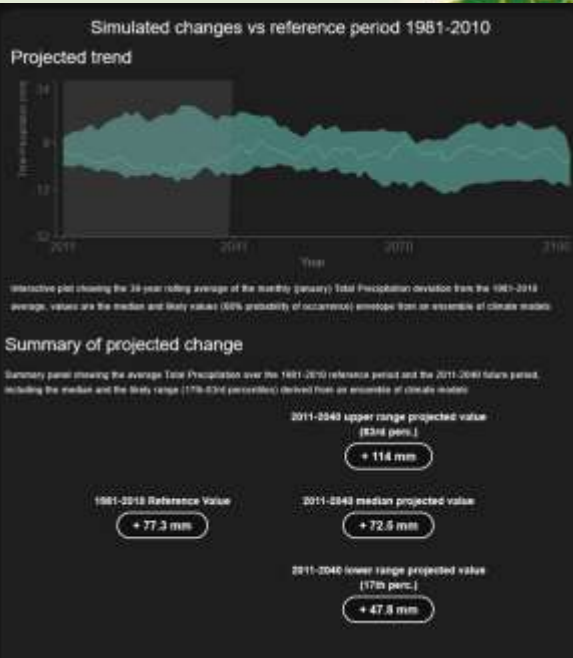
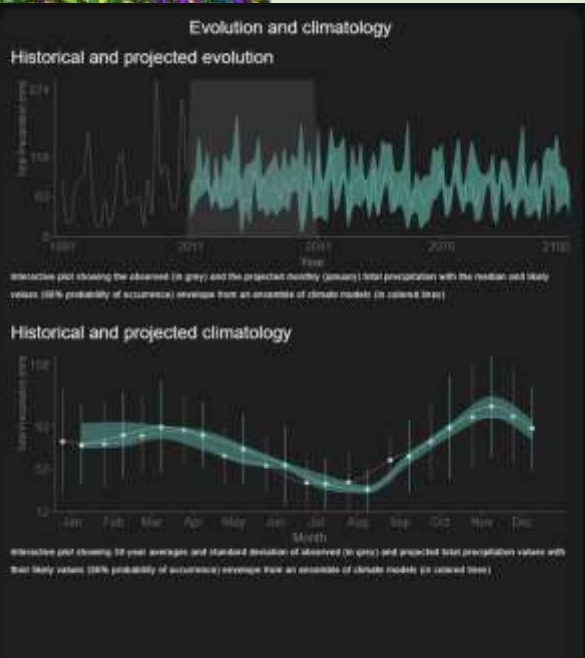
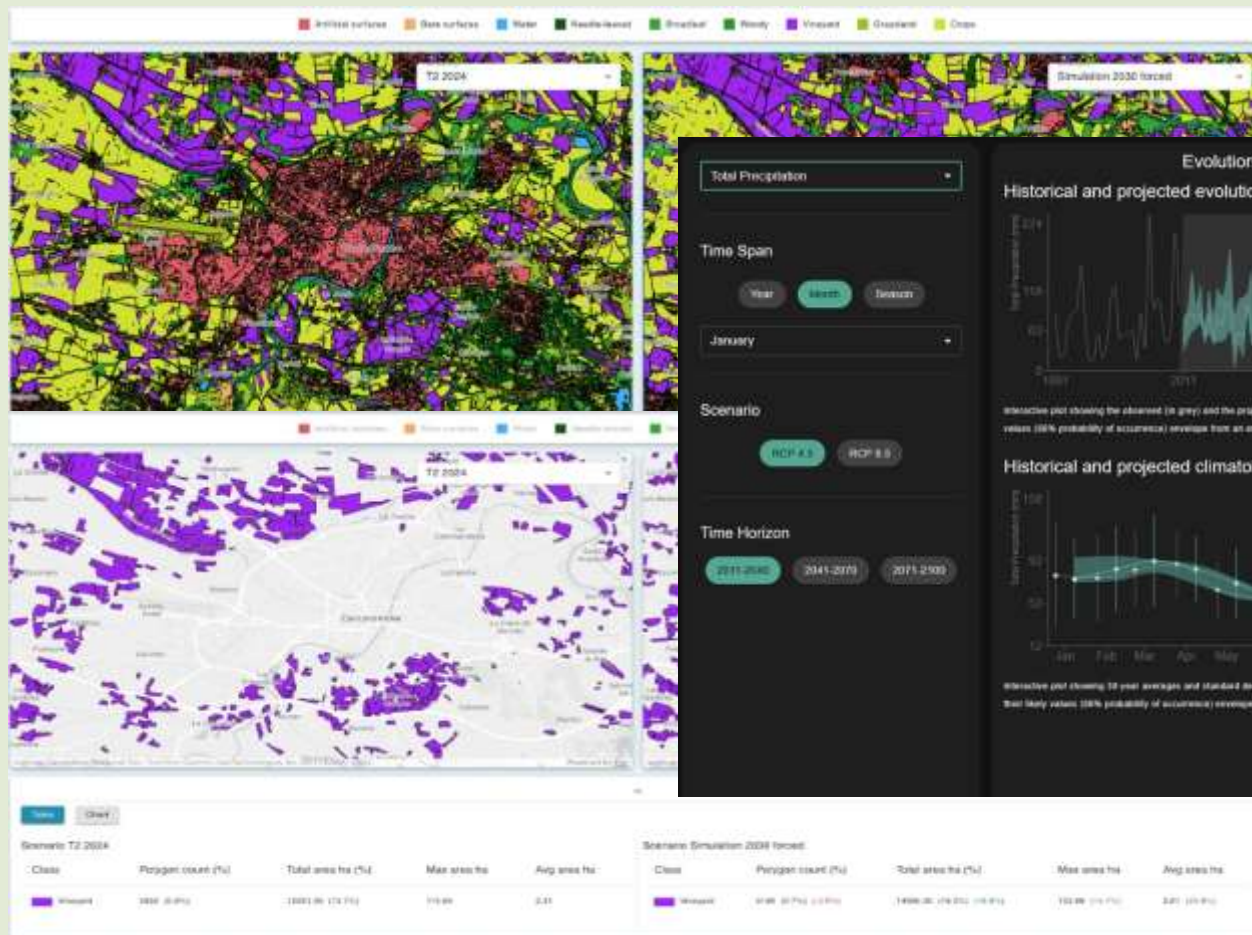
## Scenario Analysis for Better Land & Risk Decisions





# From platform to impact

Turning scenarios into action





# Questions & Answers

Contact Details

Presenter

*Francesca.Piatto@earsc.org*

## OUR PARTNERS





# LANDSHIFT

Balancing Land Use Through Innovation and Beauty

## CONTACT US



[www.landshift.eu](http://www.landshift.eu)



[@LandShift](https://www.linkedin.com/company/landshift)



[info@landshift.eu](mailto:info@landshift.eu)



[@landshift.bsky.social](https://bsky.app/profile/landshift.social)



[@LandShift\\_Project](https://www.youtube.com/channel/UC...)



Funded by  
the European Union