

Geospatial World Forum 2026

Climate Resilience and Disaster Management Seminar

01 May 2026, RAI Congress Centre, Amsterdam, The Netherlands

Theme: Adapting Today, Thriving Tomorrow: Geospatial Solutions for

Climate and Crisis

Session 3: Planning for Extremes - Climate-Smart Cities & Infrastructure

Moderator:

Jeff Carney, Professor + Director Florida Institute for Built Environment Resilience (FIBER)

Speakers:

Frans Keijzer, Customer Solution Manager TomTom

Lisa Broekhuizen, Technical Director, Space4Good

Dean Hintz, Team Lead - Strategic Solutions; Product Manager Open Standards, Safe Software

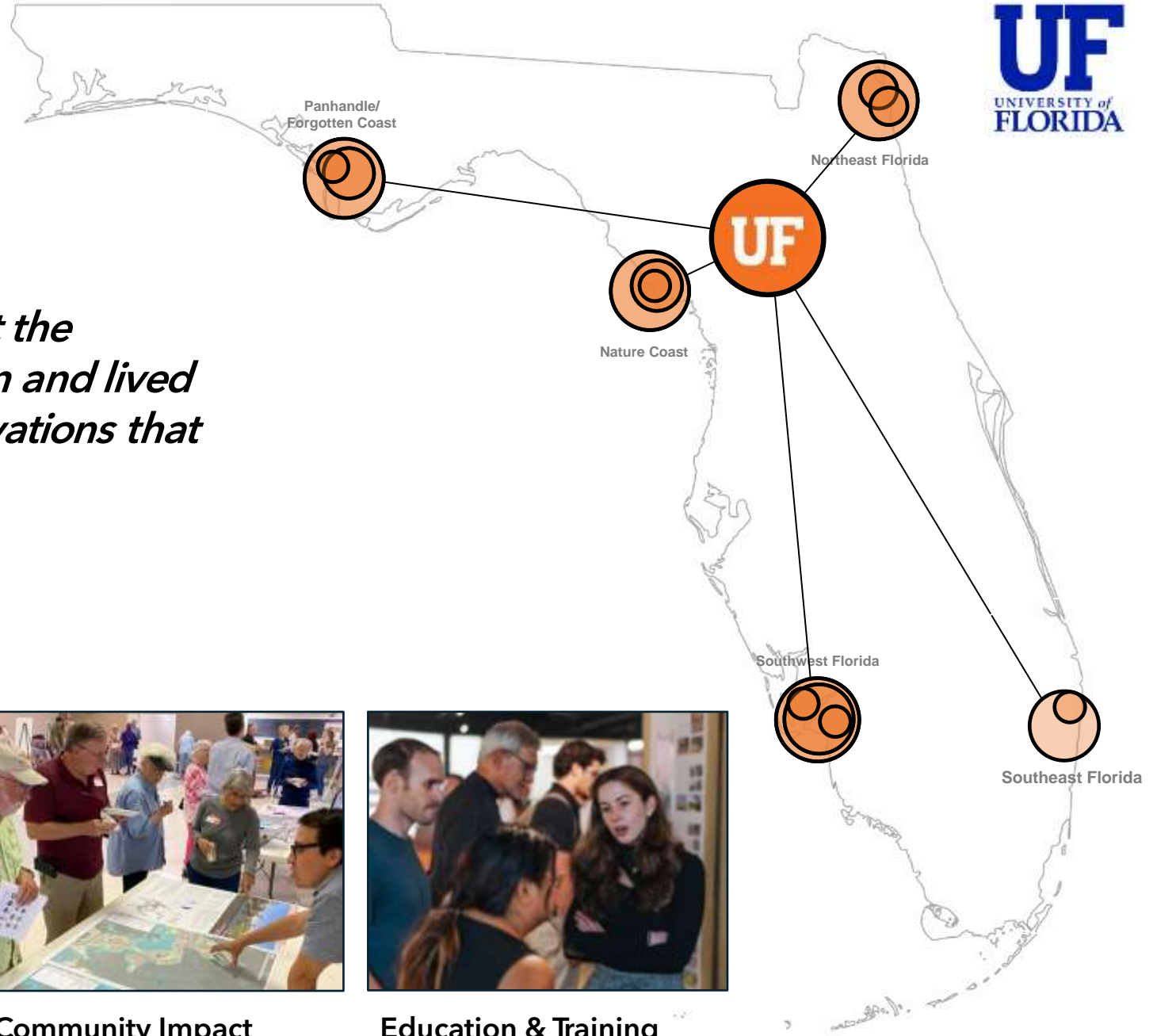
John P Wilson, Founder, USC Spatial Sciences Institute

Hrishikesh Ballal, Founder, Geodesignhub



FIBER

FLORIDA INSTITUTE FOR BUILT ENVIRONMENT RESILIENCE
UNIVERSITY OF FLORIDA | COLLEGE OF DESIGN, CONSTRUCTION & PLANNING



FIBER seeks to build knowledge at the intersection of research, application and lived experience around ideas and innovations that foster built environment resilience

Guiding Themes of FIBER's Work



Spatial Technology



Design Research



Community Impact



Education & Training

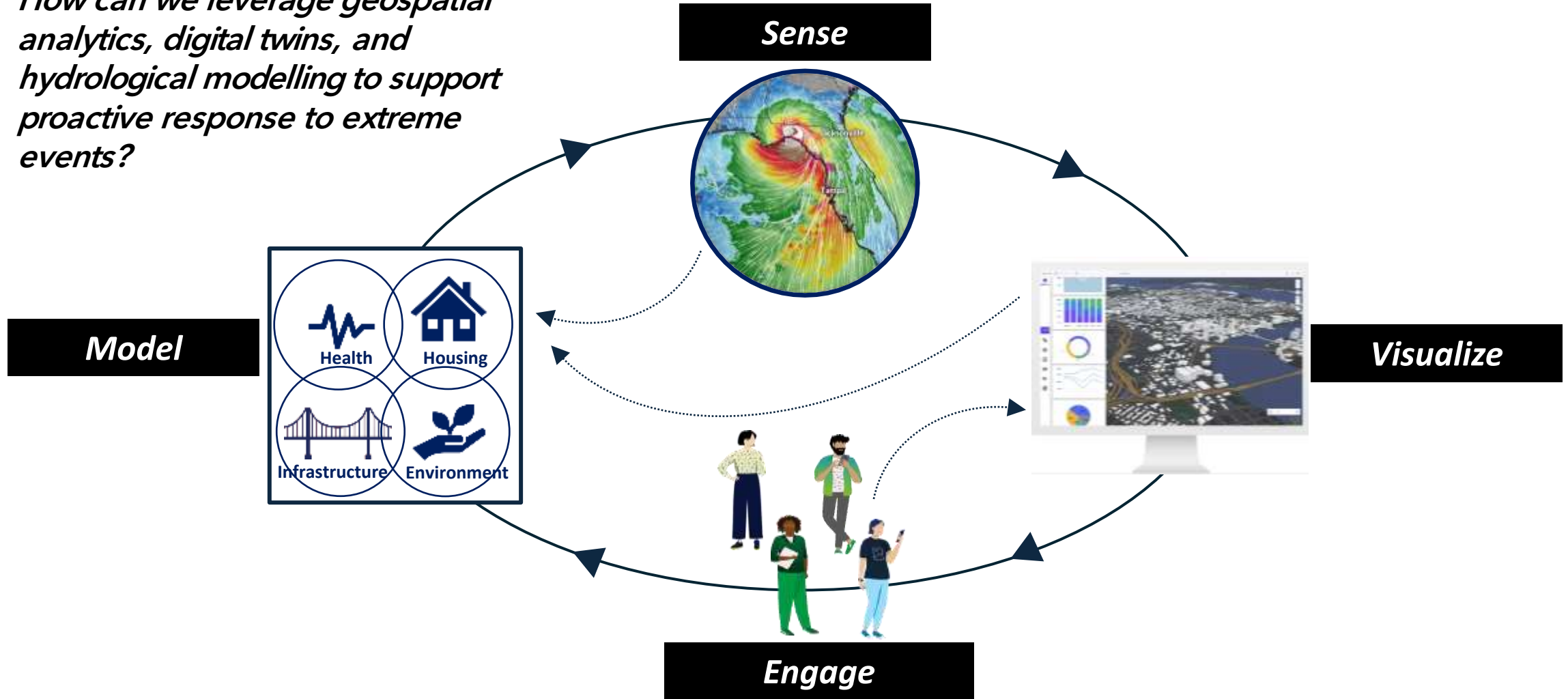


FIBER

FLORIDA INSTITUTE FOR BUILT ENVIRONMENT RESILIENCE
UNIVERSITY OF FLORIDA | COLLEGE OF DESIGN, CONSTRUCTION & PLANNING



How can we leverage geospatial analytics, digital twins, and hydrological modelling to support proactive response to extreme events?





FIBER

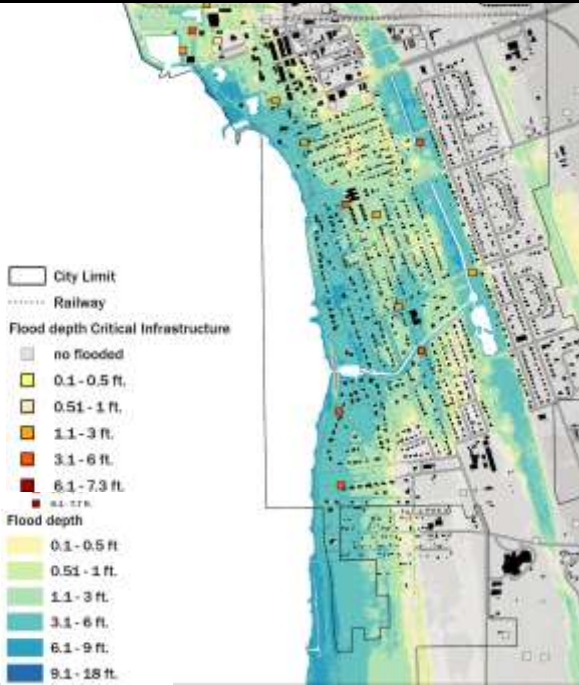
FLORIDA INSTITUTE FOR BUILT ENVIRONMENT RESILIENCE
UNIVERSITY OF FLORIDA | COLLEGE OF DESIGN, CONSTRUCTION & PLANNING



How can we maximize the impact of geospatial technologies through urban planning tools to reduce long-term urban climate risk?

Images from Resilient Port St. Joe and Cedar Key projects supported by FDEP and CRA grants

Vulnerability Assessment



Adaptation Plan



Comprehensive Plan



Redevelopment Strategy

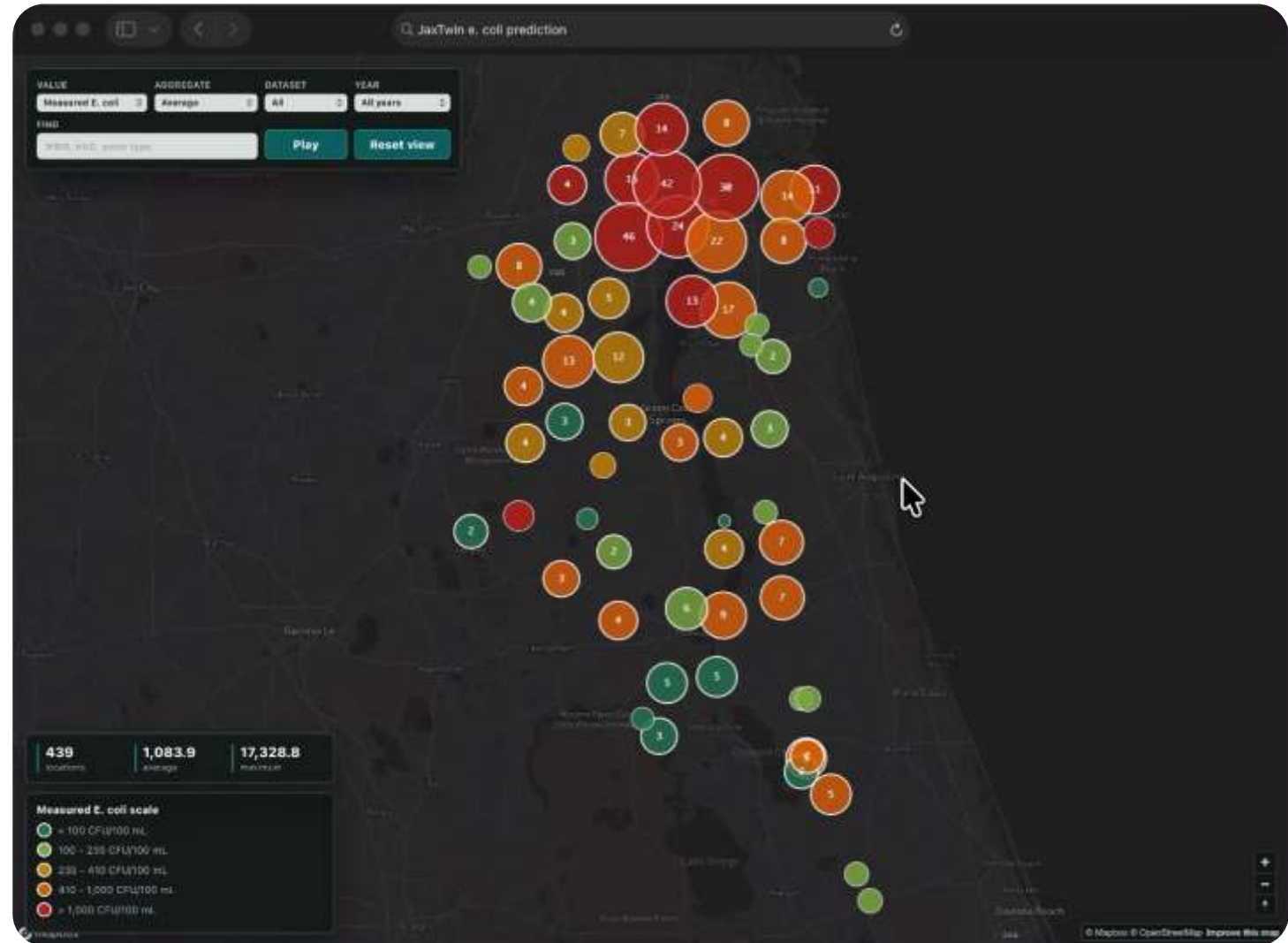


How can we leverage real-time data and analytics to improve design and mitigation strategies?

Early Warning System
E. Coli Concentration Prediction
Jacksonville, FL
PI: Kalindhi Larios

Using environmental, landscape, hydrologic, and climatological data, this model predicts E. coli concentrations across Jacksonville waterways and helps identify the factors most likely driving observed water-quality patterns. The simulation supports scenario-based exploration of contamination risk linked to land use, septic infrastructure, and extreme weather.

Geospatial Digital Twin - JaxTwin



Speakers:



Frans Keijzer,
Customer Solution
Manager TomTom



Lisa Broekhuizen,
Technical Director,
Space4Good



Dean Hintz, Team Lead -
Strategic Solutions; Product
Manager Open Standards



John P Wilson, Founder, USC
Spatial Sciences Institute



Hrishikesh Ballal, Founder,
Geodesignhub