

世界が進むチカラになる。



Session 3: Financial and Risk Intelligence: Location Analytics for Payments, Insurance, and Investments

MUFG Initiatives

May 1st, 2026
MUFG Bank

About MUFG

MUFG Overview

- Mitsubishi UFJ Financial Group (MUFG) is one of the world's most diversified
- The group has the largest overseas network of all Japanese financial institutions in more than 50 countries

Individual clients

Corporate clients

Institutional investors

Highest level of products and services

Mitsubishi UFJ Financial Group (MUFG)

Commercial Banking

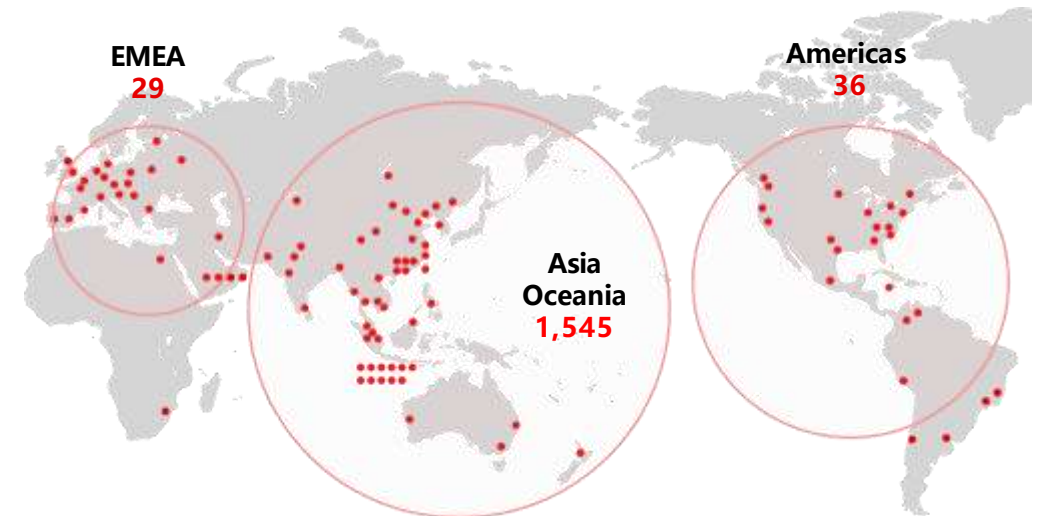
MUFG Bank

Securities

Mitsubishi UFJ
Morgan Stanley
Securities

Trust Banking

Mitsubishi UFJ
Trust and Banking



(Bank of Ayudhya : 607)
(Bank Danamon : 879)

Value chain of the Space Industry that MUFG consider

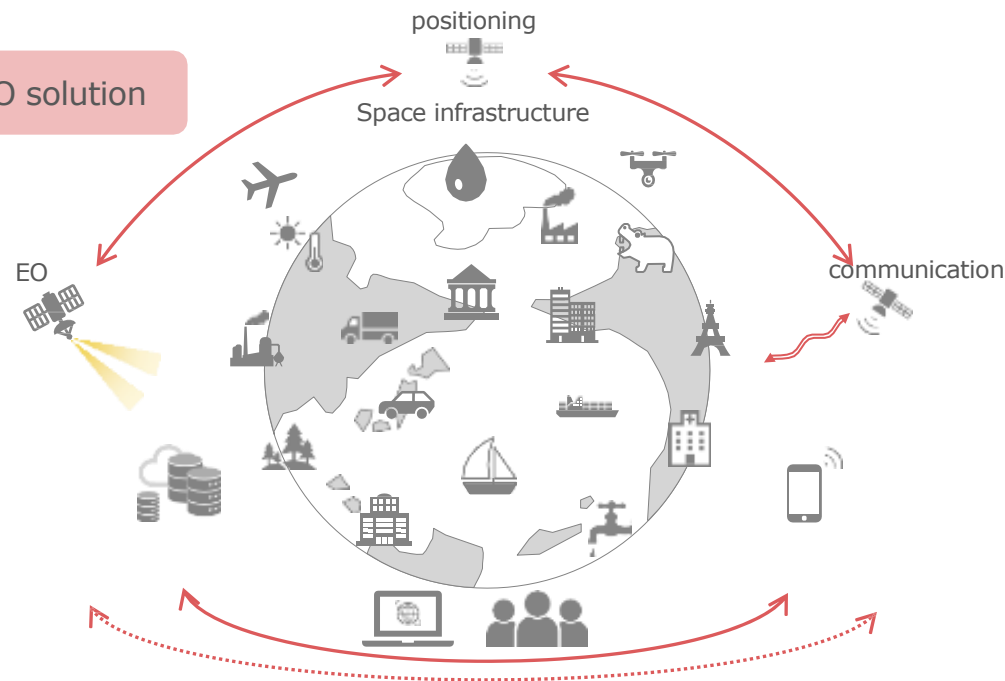
Building a value chain



Sustainability in space



EO solution



Expansion of the innovation area (ISS, manned flight, etc.)

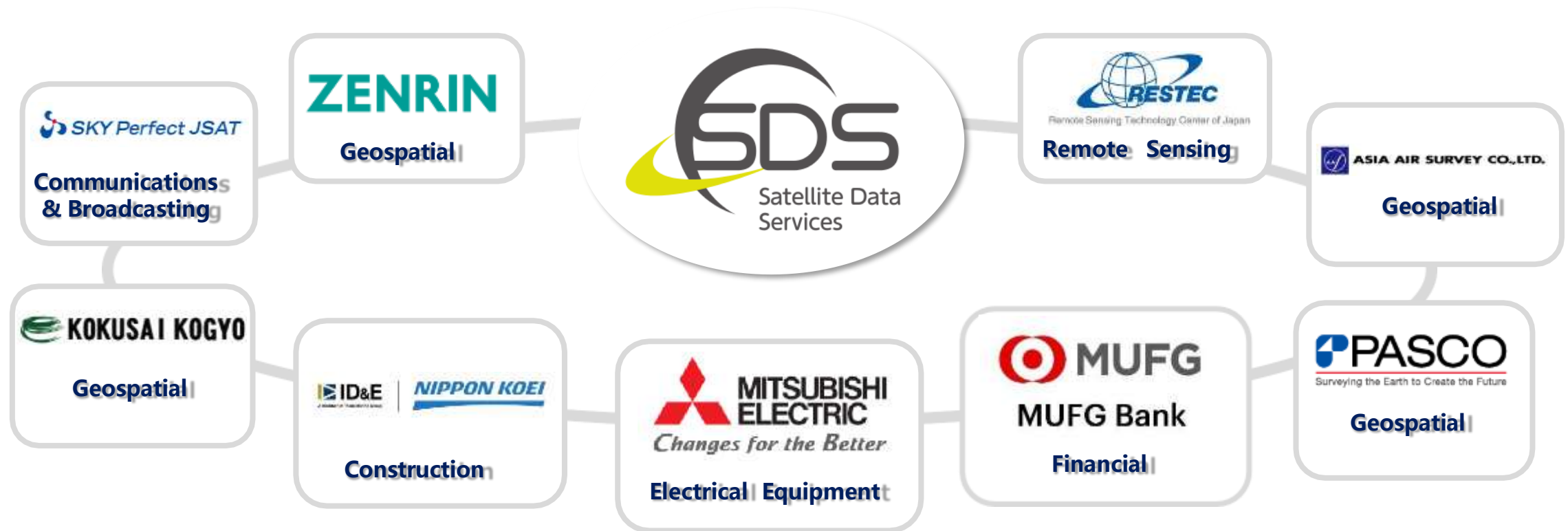
Micro-gravity environment



Solving diverse social issues and building new business opportunities



Satellite Data Services - Company Overview



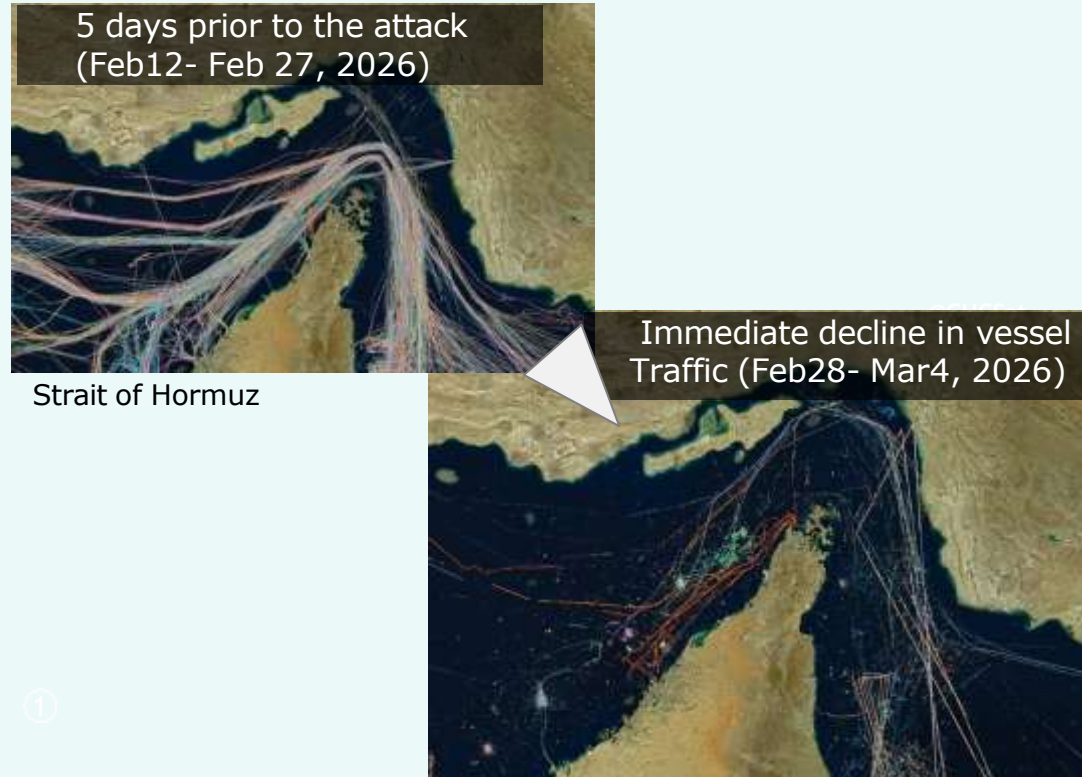
Satellite Data Services (SDS) brings together the expertise of companies across the satellite data service value chain, covering satellite development, operations, data analysis, and consulting, to build new business frameworks that promote the effective use of satellite data.

1 Visualization of "Risk"



Making Invisible Maritime Risks Visible

- Using AIS data with Privateer's GIS platform to identify distribution of vessels' routes before and after the attack



Insights from satellite analysis



External factors

- Major global chokepoint influenced by a combination of geopolitical, military, and economic factors.
- There is speculative or fake information to influence shipping and political narratives.



Insight

- Acquire information ahead of economic indicators.
- Predict market trends based on fact-checking.
- Leads to a **new standard for objective, timely risk intelligence.**

2 Building Resilience to Disaster

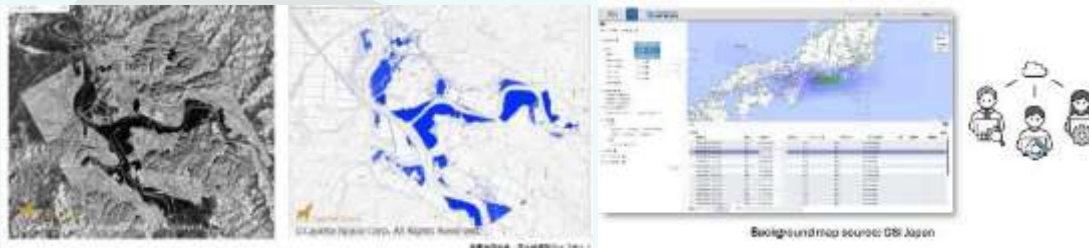


Japan Disaster Charter

- The Japan Disaster Charter is a framework that enables **one-stop access to satellite data for disaster response**. It supports rapid observation, analysis, and delivery by coordinating users, satellite providers, and analysis organizations



Flood Monitoring



① Identify flood inundation conditions

② Integrate tasking system

Faster & Easier Access to Satellite Data



Challenges

- Different request procedures for each satellite & Manual workflow causes critical delays.
- Detecting a broad understanding of damage immediately after a disaster is essential for the early response of all stakeholders.



Outcomes

- Managed through an integrated 24-hour operational system.
- Streamlines observation requests, data acquisition, and result delivery for users and data providers.
- This system will help build resilience and can be utilized for BCP.**

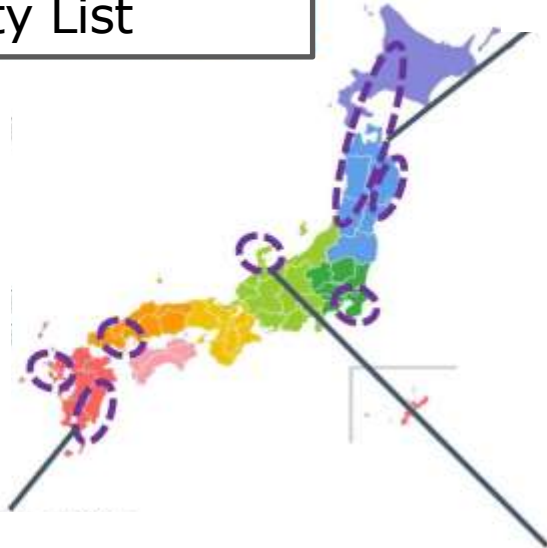
2 Reference. [BRIDGE] Japan Disaster Charter Initiative (SDS's Project)



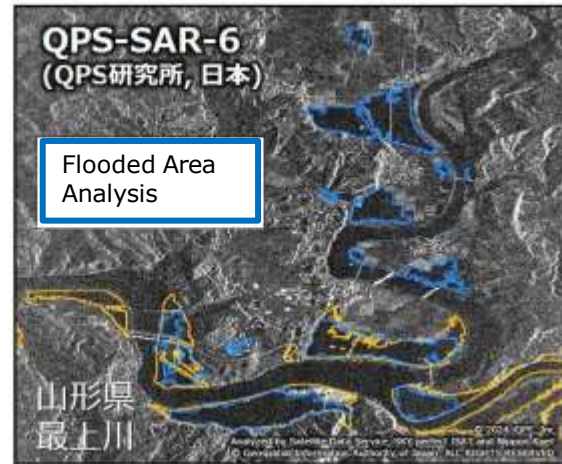
2024 Activity List

25-30, Jul : Heavy Rain
 08-09, Aug: Earthquake
 11-12, Aug: Typhoon 5
 16-18, Aug: Typhoon 7
 28-31, Aug: Typhoon 10
 20-26, Sep: Heavy Rain
 01-08, Nov: Heavy Rain

7 times, 31 days



Heavy Rain 25-30, July



24/7 response to increasing disaster is tough...



Earthquake 08-09, Aug

震度分布



Heavy Rain 20-26, Sep

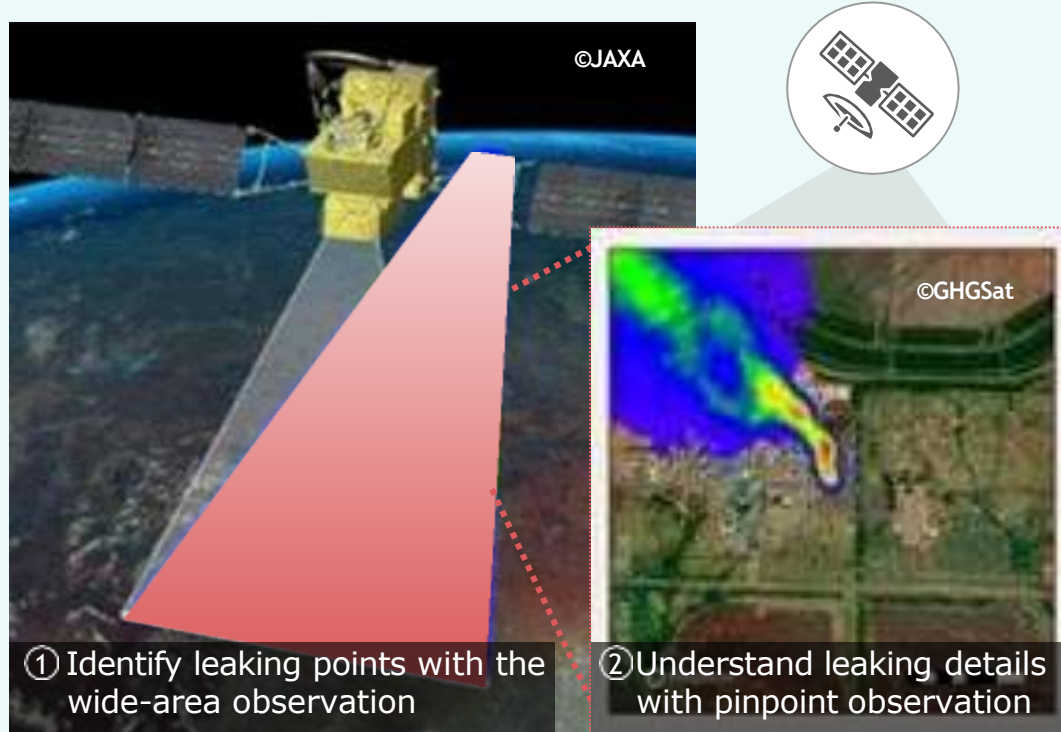


Automation is a MUST!

3 Visualization of "Emission"

GHG emission monitoring of LNG plants/pipelines

- Linking Japan's core large satellites with small commercial satellites from overseas to ① **wide-area observation** and ② **pinpoint observation**



Trends in methane emissions management



External factors

- International discussions/initiatives underway to manage methane emissions in LNG value chain



MMRV¹ framework in OGMP² 2.0 etc.



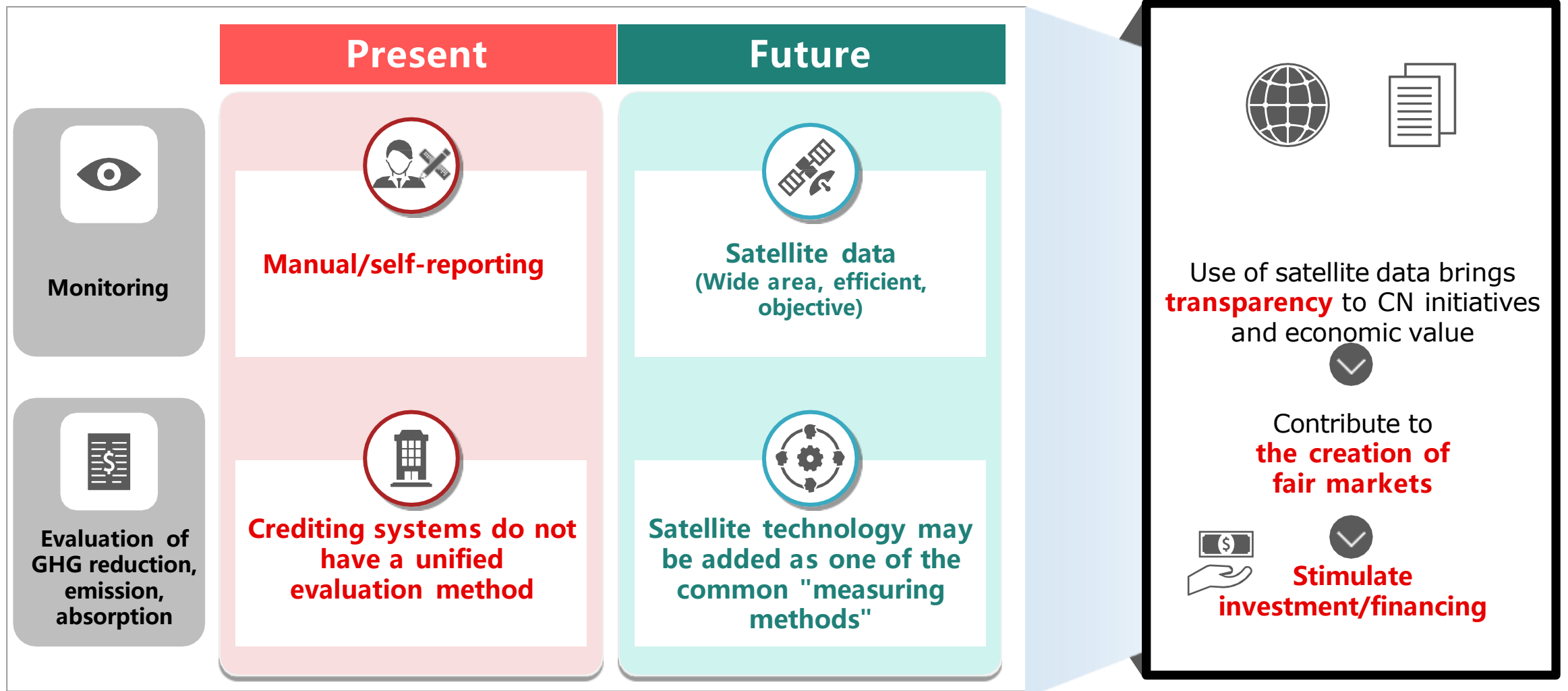
JP-Korea collaboration in LNG value chain



Issues

- Earth Observation is attracting global attention including COP28 as one of the objective observation methods
- Need for **Japan to actively participate in building a mechanism** based on international collaboration

Outcomes from satellite use



Disclaimer

This presentation does not result in any delegation or contractual relationship between your company and MUFG Bank, Ltd., and our bank bears no legal obligation or responsibility.

Although this document is based on reliable data, our bank does not guarantee its accuracy or completeness. All of this is just an indication of our bank's current judgment. In addition, our bank shall not be liable for any damages arising in connection with this document. For other issues related to expertise, please consult experts such as lawyers, tax accountants and certified public accountants in your company.

MUFG Bank, Ltd. and Mitsubishi UFJ Morgan Stanley Securities Co., Ltd. are separate entities. This document does not explain the products and services provided by Mitsubishi UFJ Morgan Stanley Securities Co., Ltd. In addition, officers and employees of MUFG Bank, Ltd. may not solicit products and services provided by MUMSS.

This material is copyrighted by our bank and is protected by copyright law. This document may not be used in whole or in part without the prior consent of our bank.

Copyright 2026 MUFG Bank, Ltd. All rights reserved.

1 -4 -5, Marunouchi, Chiyoda-ku, Tokyo 100-8388, Japan

MUFG Bank, Ltd., Industry Research and Creation Division

MUFG Bank, Ltd.

Industry Research and Creation Division

〒100-8388 1-4-5, Marunouchi, Chiyoda-ku, Tokyo

www.mufg.jp/english