

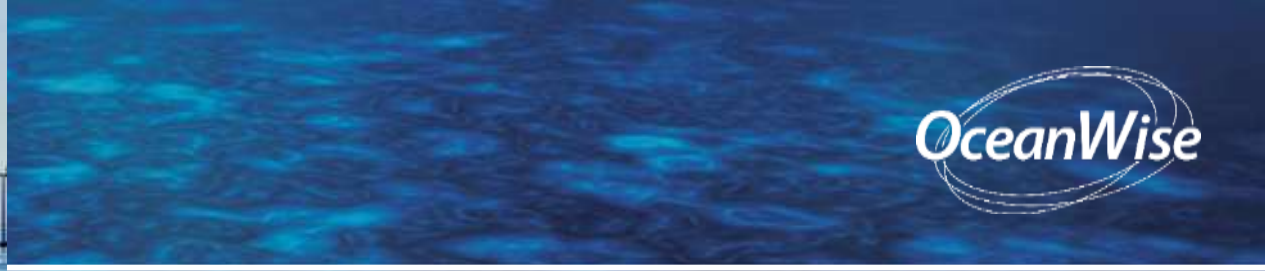
The logo for OceanWise, featuring the company name in a white, italicized sans-serif font. The text is enclosed within a white, stylized oval shape composed of multiple overlapping lines, creating a sense of motion or a globe. The background of the slide is a blue-toned aerial view of a large container ship at sea, with a network of white lines and dots overlaid, suggesting a digital or geospatial theme.

OceanWise

Geospatial Intelligence as Core Port Infrastructure

Caroline Levey
Managing Director
OceanWise Ltd

GWF 2026, Amsterdam



UK-based specialist in
**marine environmental monitoring and
marine mapping**

We support marine organisations to
**collect, manage, and use ocean data
more effectively**

**Turning fragmented marine data into
reliable, decision-ready insight**

OCEANWISE

Adoption of Geospatial Intelligence



No
adoption

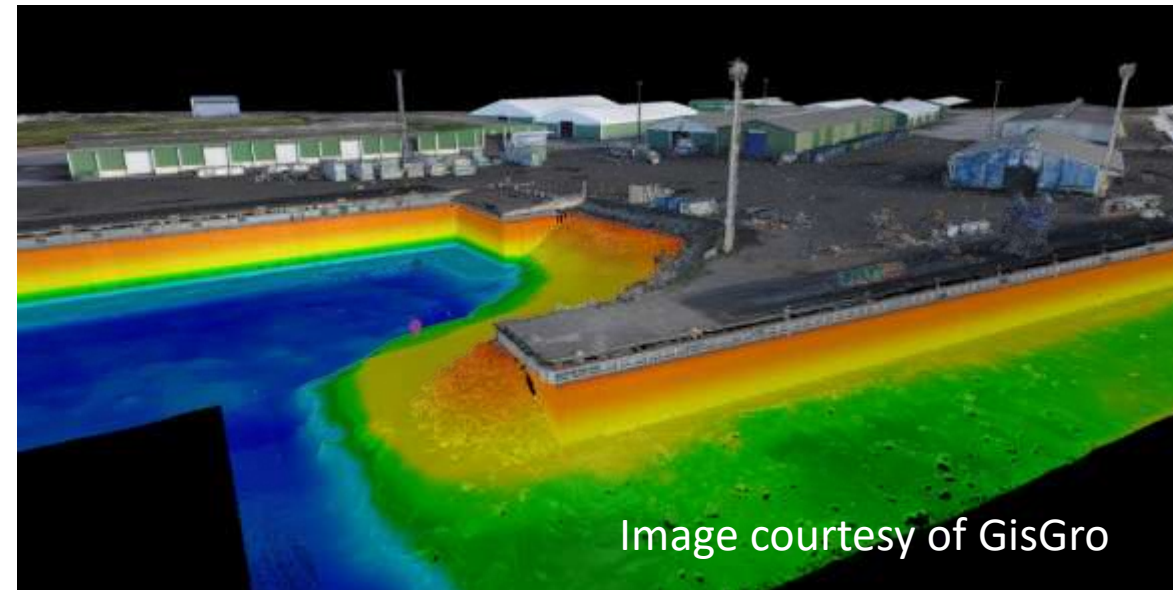
Siloed
adoption

Integration
across
operations

Land – Sea Interface Challenges

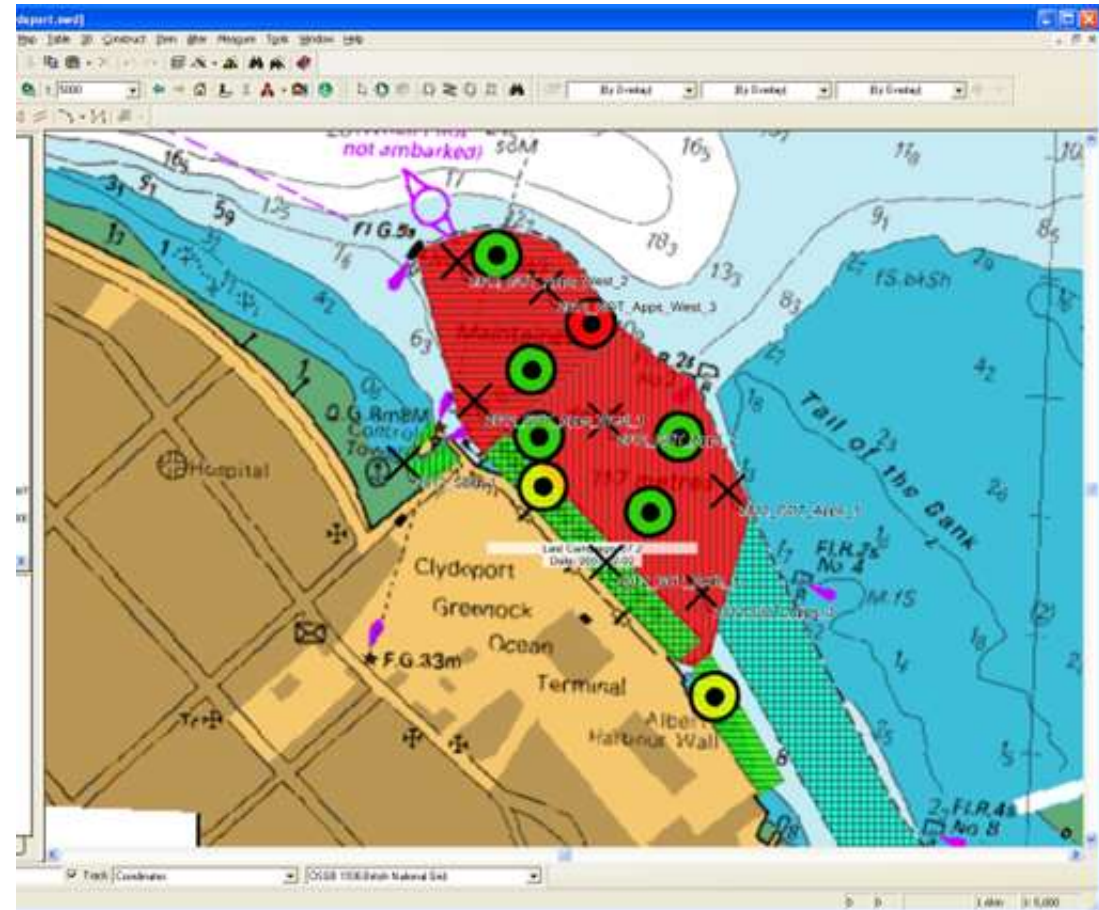


- Ports sit at the intersection of land and sea operations
- Marine and terrestrial geospatial data are often:
 - Collected differently
 - Referenced to different coordinate systems and datums
 - Managed by different teams and suppliers
- Common integration issues include:
 - Coordinate reference system mismatch
 - Vertical datum complexity
 - The intertidal “white ribbon”

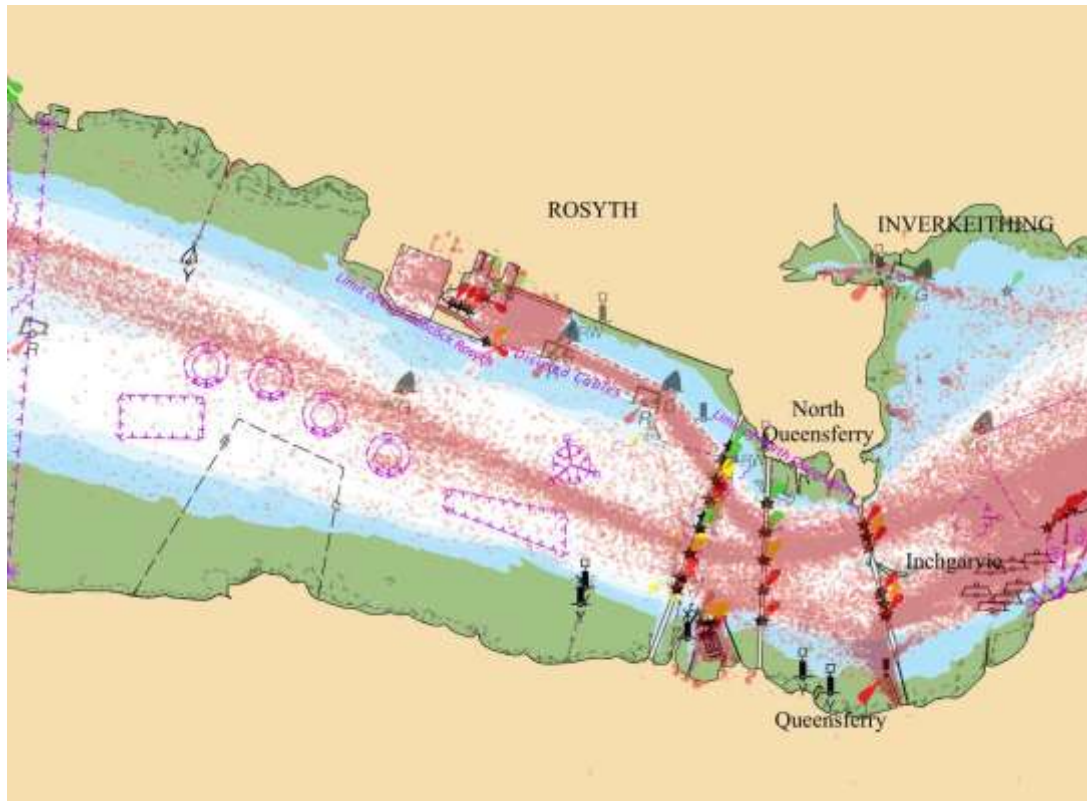


From Data Silos to “One Version of the Truth”

- Ports manage multiple datasets:
 - Hydrography and bathymetry
 - Aids to navigation
 - Port infrastructure and assets
 - Environmental and operational data
- Common challenges:
 - Inconsistent formats
 - Variable quality
 - Limited accessibility
 - Differences across land-sea interface
- Geographic information systems provide:
 - A single spatial context
 - A shared operational picture



Using Geospatial Intelligence to Anticipate Risk



- Geospatial analysis supports:
 - Predictive maintenance of assets
 - Identification of navigational risk areas
 - Planning for dredging and future development
 - Understanding climate and environmental exposure
- Outcomes:
 - Fewer disruptions
 - Improved safety
 - Better-informed investment decisions

Interoperable, Trusted Data Enables Resilient Trade



Interoperable
data enables
reuse



Shared data
builds trust
between
stakeholders



Quality and
governance
matter as
much as
technology

<https://fmsdi2024-d001.hartis.org/>

Thank you

Enjoy the confidence of working with marine data experts

info@oceanwise-global.com

+44 (0)1420 768 262

www.oceanwise-global.com



Email:
caroline.levey@oceanwise-global.com