

# REFRAMING FISHERIES AS HYDROSPATIAL INFRASTRUCTURE



NOTO

[www.notoanalytics.com](http://www.notoanalytics.com)



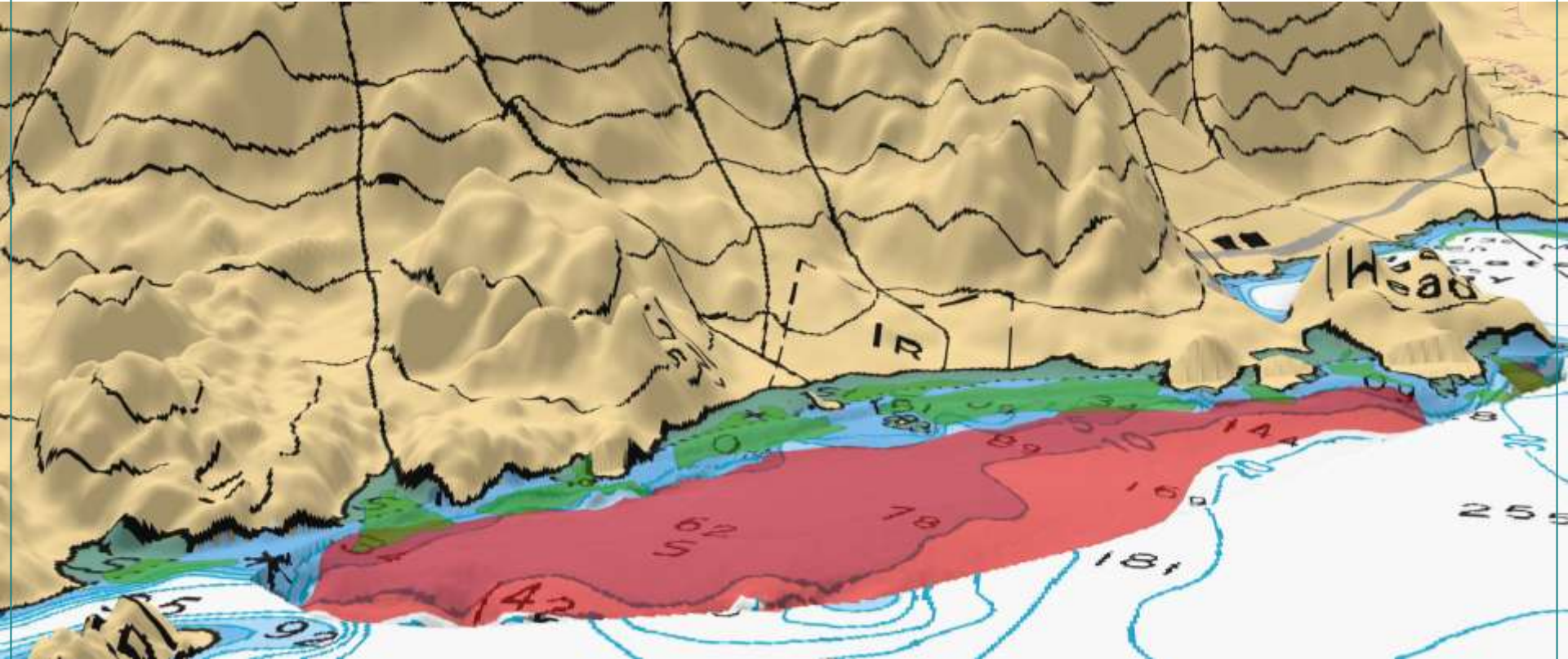
**GEODUCK**  
underwater hatwaders association

# THE GEODUCK—A 3D Benthic Mapping Challenge



- Geoducks present a unique 3D geospatial challenge.
- They live over 150 years and bury themselves deep in complex seabeds.
- Surface sensors cannot detect them, making traditional census methods ineffective.
- We manage over 5,000 distinct beds covering 20,000 hectares of seabed.

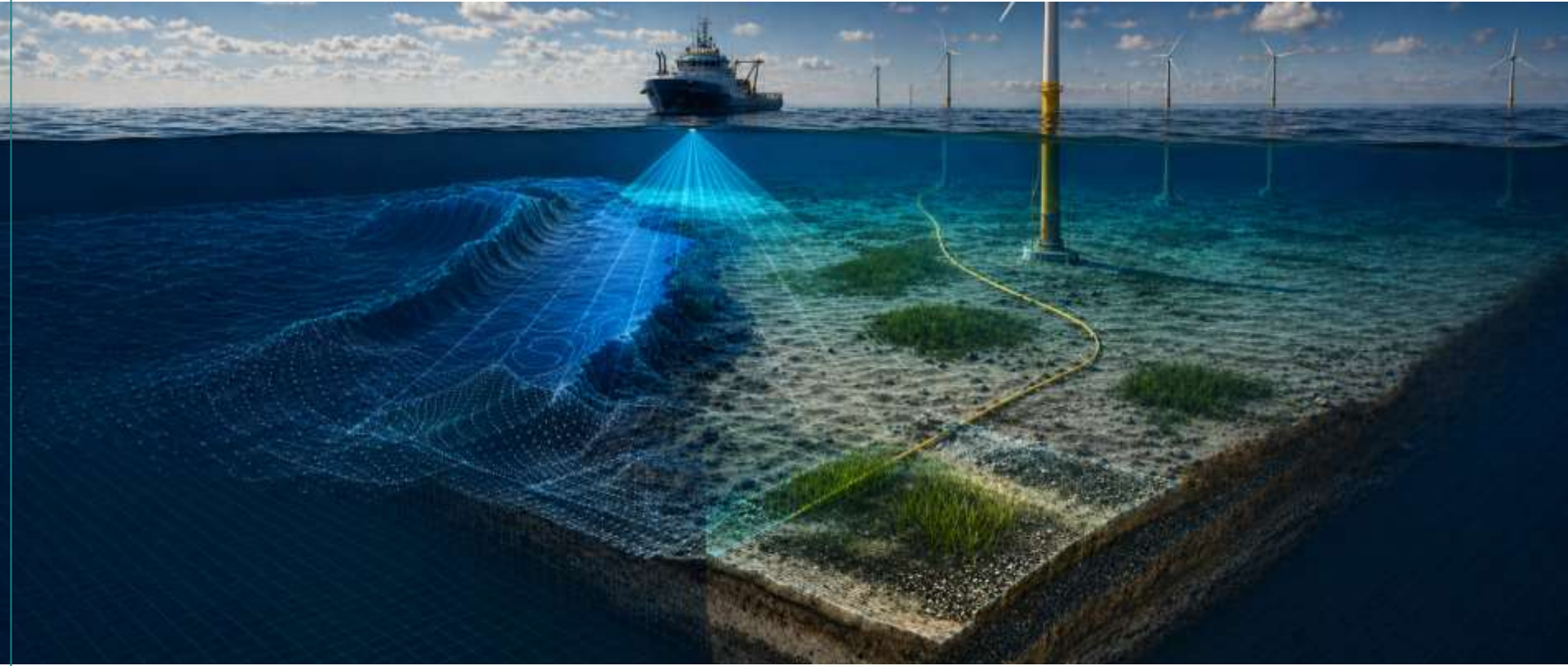
# Navigating Ecological Constraints and Dynamic Polygons



- Eelgrass is a priority "Blue Carbon" ecosystem requiring strict 10-meter operational buffer zones.
- Sea otters represent a dynamic, moving predation front that significantly alters biomass.
- We navigate a moving puzzle of anthropogenic, ecological, and regulatory exclusion zones.



# Scaling Hydrospatial Solutions Across the Blue Economy



- High resolution benthic maps and real time data pipelines are directly applicable to major blue economy sectors.
- This integrated data architecture ensures we move from simply counting resources to actively monitoring and managing complex marine ecosystems.