



GEOSPATIAL WORLD FORUM

AEC SUMMIT OPENING

**DR. SENG CHUAN TAN
PRESIDENT OF WFEO**

30 April 2026

Amsterdam, The Netherlands

WFEO - a global community of engineers

united by:

- hope;
- courage;
- and innovation.

committed to shaping a future:

- smarter;
- greener;
- more resilient and just.

At GWF 2025 in Madrid, we began this dialogue.
Today, we advance it with renewed determination.



AEC Summit: GWF 2026



We gather here not merely to discuss technology,

but to confront the profound questions of our time:

01

How do we build?

02

Why do we build?

03

And for whom do we build?

How do we build in the face of escalating climate risk,
and how do we ensure that sustainability is at the heart
of every decision we make?



AEC Summit Theme

The theme of this conference reminds us that *engineering and construction are not neutral activities.*



Sovereignty

Digital sovereignty is now inseparable from physical sovereignty.

WFEO advances this through policy dialogue, working with governments and institutions worldwide to establish frameworks for data sharing, interoperability, and resilience planning.



Economy

The AEC sector contributes more than **13%** of global GDP, yet productivity continues to lag.

WFEO advances this mission through its flagship initiatives, which raise professional standards, close skills gaps, and strengthen engineering education worldwide.



Society

Infrastructure must serve society. Engineers cannot do this alone. We must collaborate with architects, contractors, policymakers, and communities.

WFEO's World Academy of Engineering convenes leading experts and institutions to drive innovation that directly benefits people.

Climate Risk and Sustainability

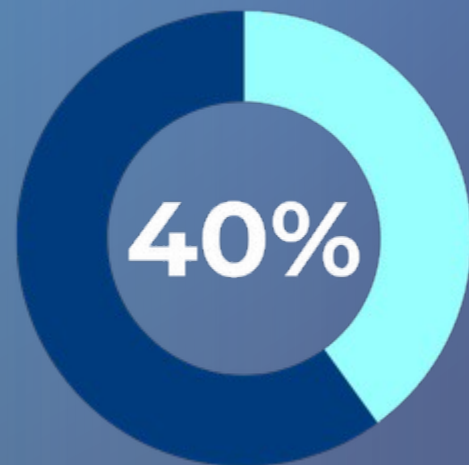
Climate risk is no longer a distant scenario. It is here, now, reshaping the way we live and work.

WARNING

The AEC sector is both a contributor to:

- global emissions;
- and a potential solution.

Buildings and infrastructure account for nearly



of carbon emissions worldwide.



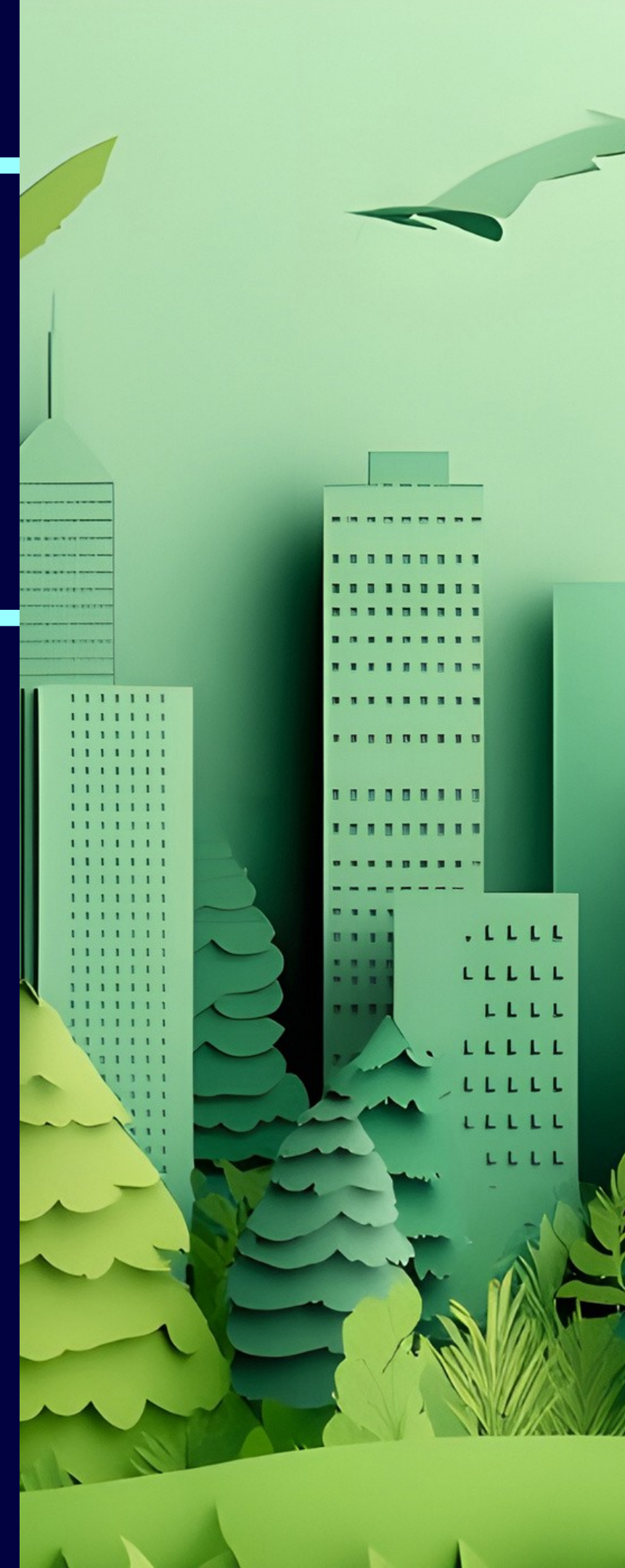
This means our sector holds the key to turning the tide!

“

Sustainability MUST THEREFORE
BE EMBEDDED INTO EVERY BLUEPRINT,
EVERY CONTRACT, EVERY POLICY!

”

Dr. Seng Chuan Tan



WFEO Contribution

WFEO is advancing this mission by aligning engineering practices with the *United Nations Sustainable Development Goals (SDGs)*.

Particularly those on:

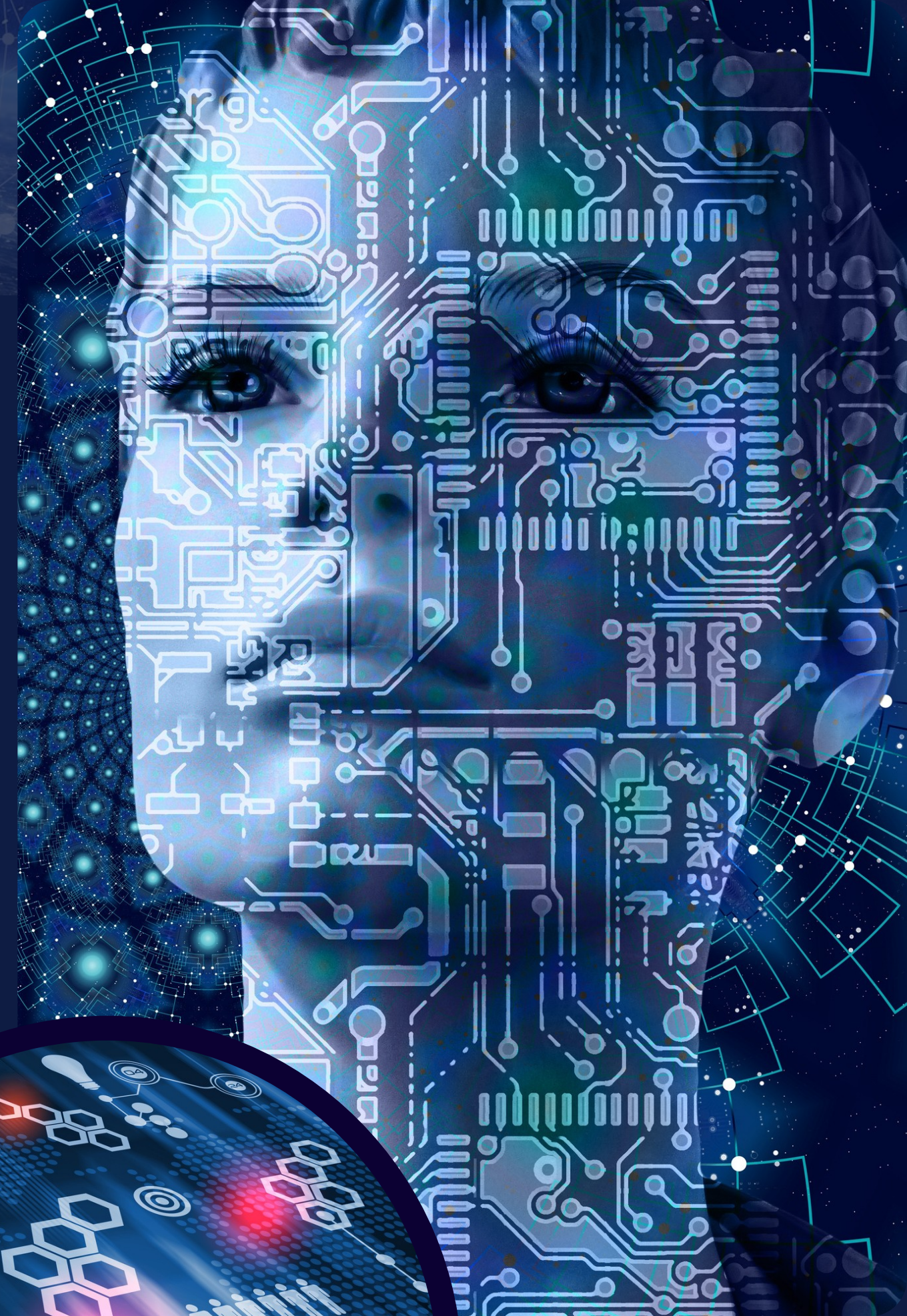
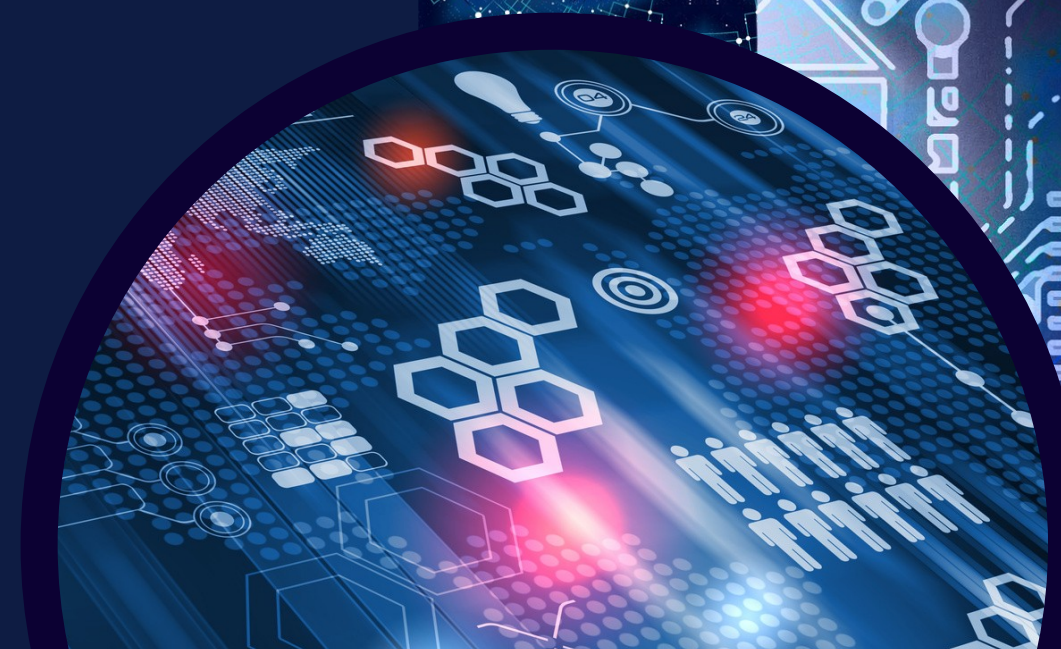
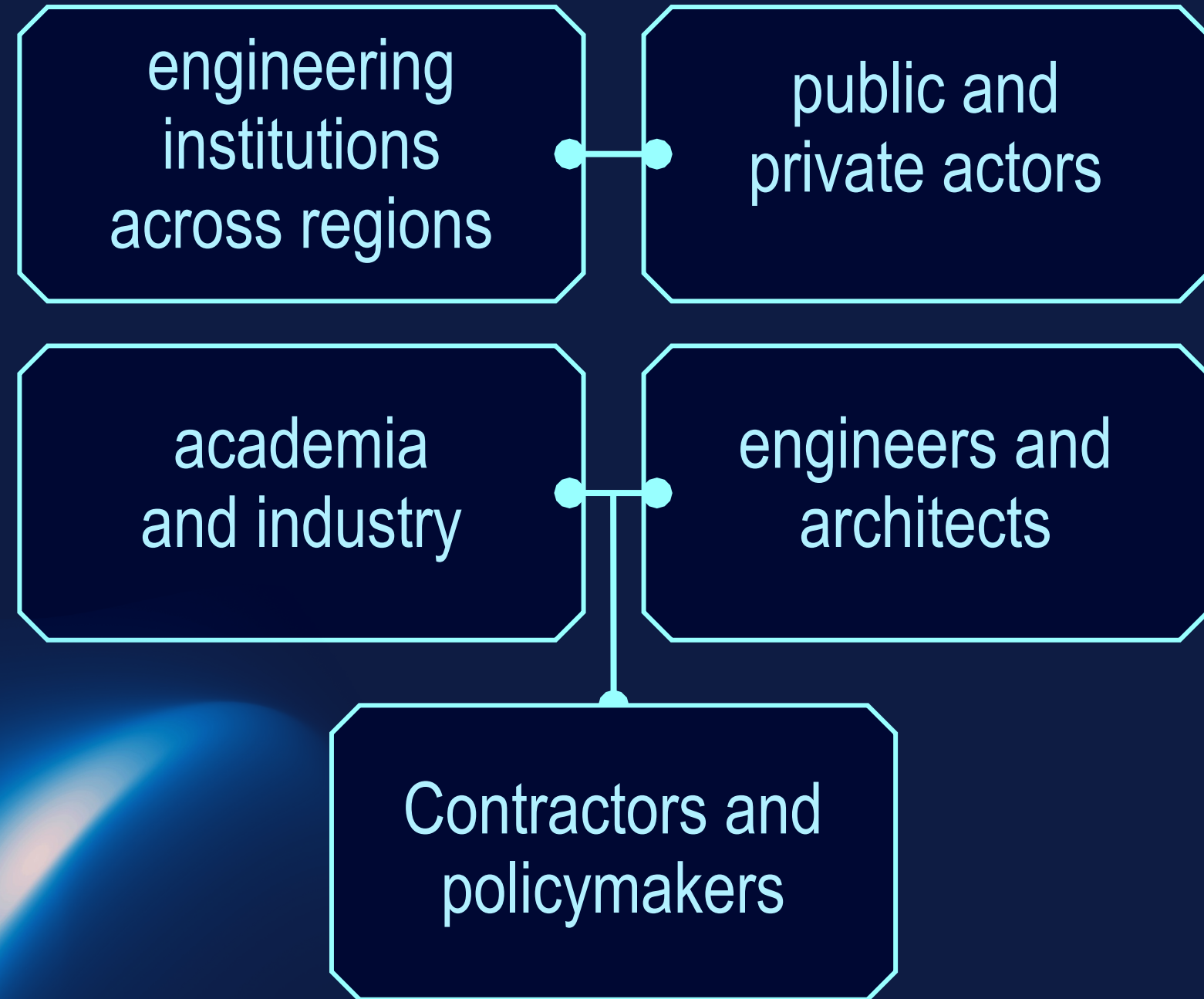
- climate action;
- sustainable cities;
- and responsible consumption.

We are working to ensure that every engineer is equipped not only *with technical skills*, but also *with the ethical responsibility* to build sustainably.



Collaboration

Today's challenges are too complex for isolated approaches.
WFEO connects:



Collaboration is not optional.
It is the only path forward.

**Climate risk does not respect
borders.**

**Sustainability cannot be
achieved in silos.**



Next Steps

The decisions we make today will define the systems that future generations inherit.

The question is not simply how much we build, but:

- how we build;
- why we build;
- and for whom we build.

By embedding *sovereignty, economy, society, and sustainability* into our vision, we can ensure that the AEC sector becomes a driver of resilience, prosperity, and inclusivity.



Conclusion



WFEO remains steadfast in this mission, advancing it through:

01

policy dialogue;

02

capacity development;

03

innovation;

04

and global cooperation.

n of Engineering Organizations

diale des Organisations d'Ingenieurs



THANK

YOU!

E:
president@wfec.org