



# GWF

GEOSPATIAL WORLD FORUM

**CLICK TO KNOW MORE**

# National Geospatial Mission

From Policy to Economic Prosperity

Srikant Sastri

Chairman, Geospatial Data Promotion & Development Committee

April 23<sup>rd</sup> 2025



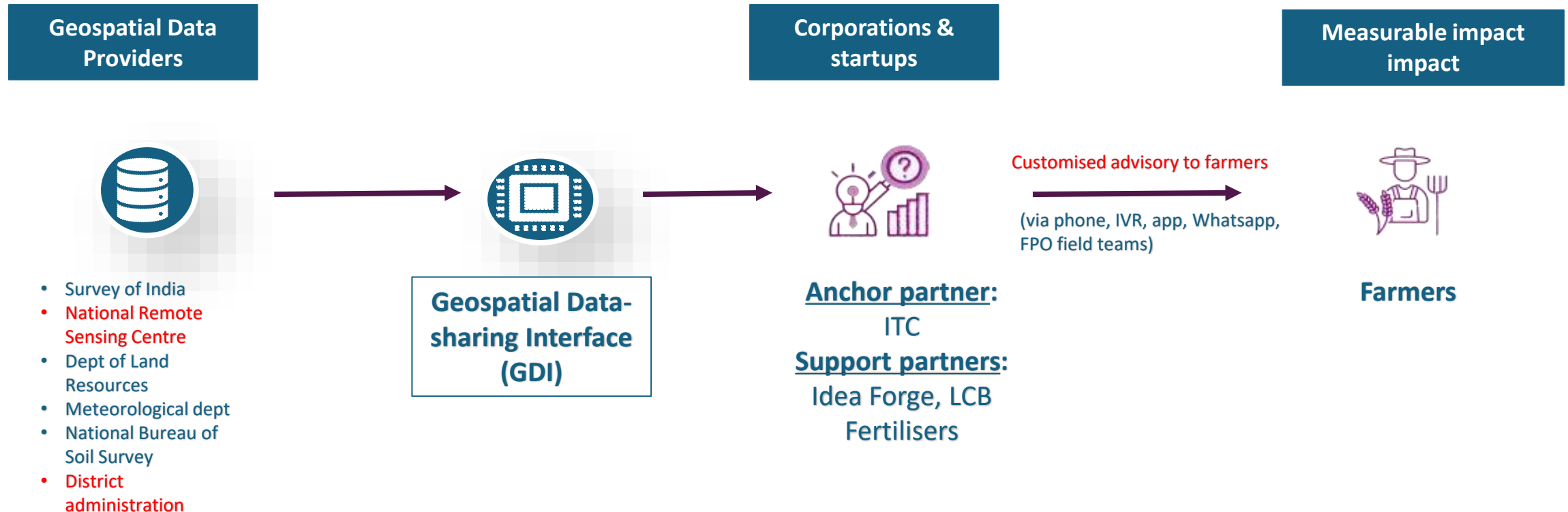


820 km from New Delhi, India.  
Wheat harvesting last week.

(Winter-spring season)

# Pilot project: Agriculture, Varanasi district (India)

User-centric approach. Wheat crop. Dec'24-Apr'25



26,000+ farmers benefited. Measurable 15%+ increase in yield

# A room full of believers!

Modern geospatial infrastructure >>>> economic development

1



Agriculture

2



Infrastructure

3



Disaster management

4



Logistics

5



Urban development

# Indicative economic impact is substantial

With only small attribution to geospatial infrastructure

## Agriculture production

(15% yield improvement with better geospatial infra. With precision agriculture, efficient water & fertiliser use, clear land titles, less environmental damage)

**POTENTIAL YIELD INCREASE: 10%+**

## Highway infrastructure cost over-runs

(54K km highways to be built next 13 years. 20% cost over-run attributed to road mis-alignments)

**COST SAVING: \$ 1.35 Bn p.a.**

## Disaster Management

(\$10Bn annual losses due to natural disasters. 20% reduction of losses due to improved geospatial infra)

**LOSS REDUCTION: \$2 Bn p.a.**

## Logistics costs

(India's logistics cost 7.8-8.9% of GDP. Cost savings with just marginal improvement to 7.7-8.8% due to geospatial infra)

**COST SAVING: \$3 Bn p.a.**

## Property Tax revenues

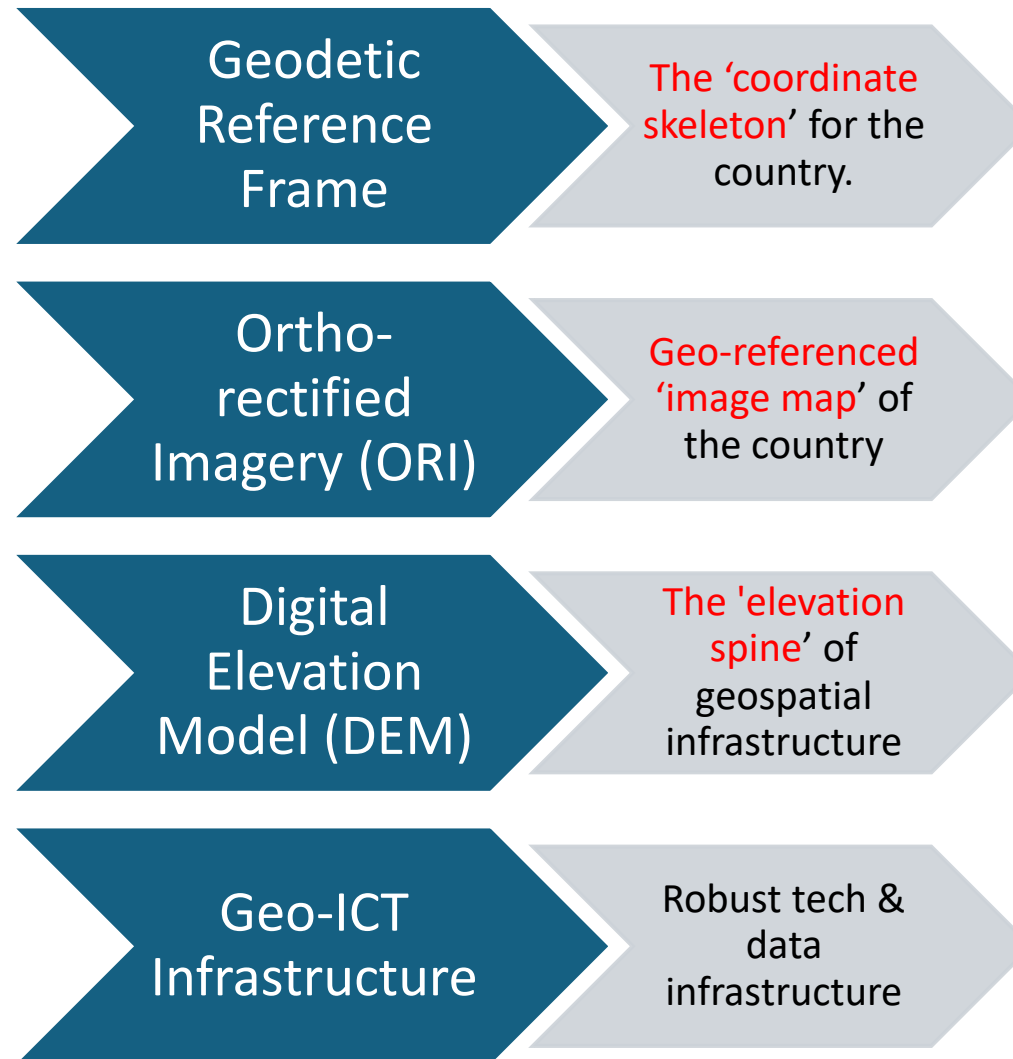
(Presently 0.2% of GDP. Aim for 0.4%. Only 20% of increase attributed to weak geospatial infra)

**REVENUE GROWTH: \$ 1.5 Bn p.a.**



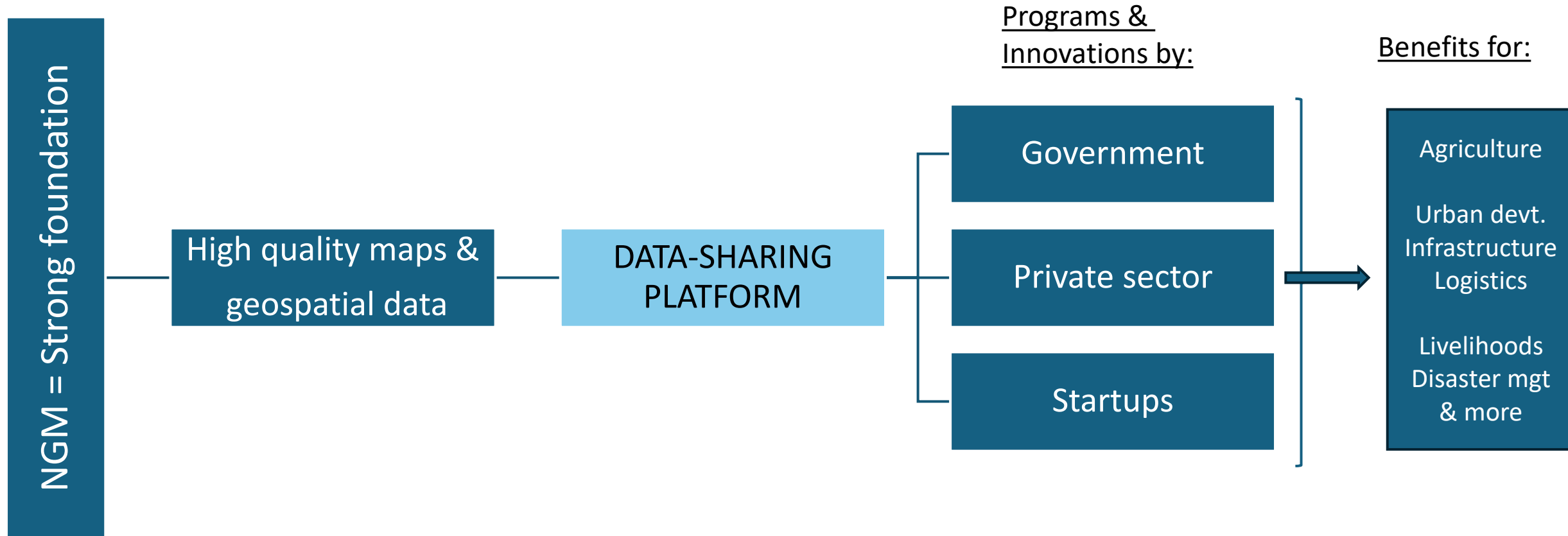
# National Geospatial Mission (NGM) aims to lay foundation for this

By revamping India's mapping & data infrastructure



# National Geospatial Mission >>>> citizen-centric benefits

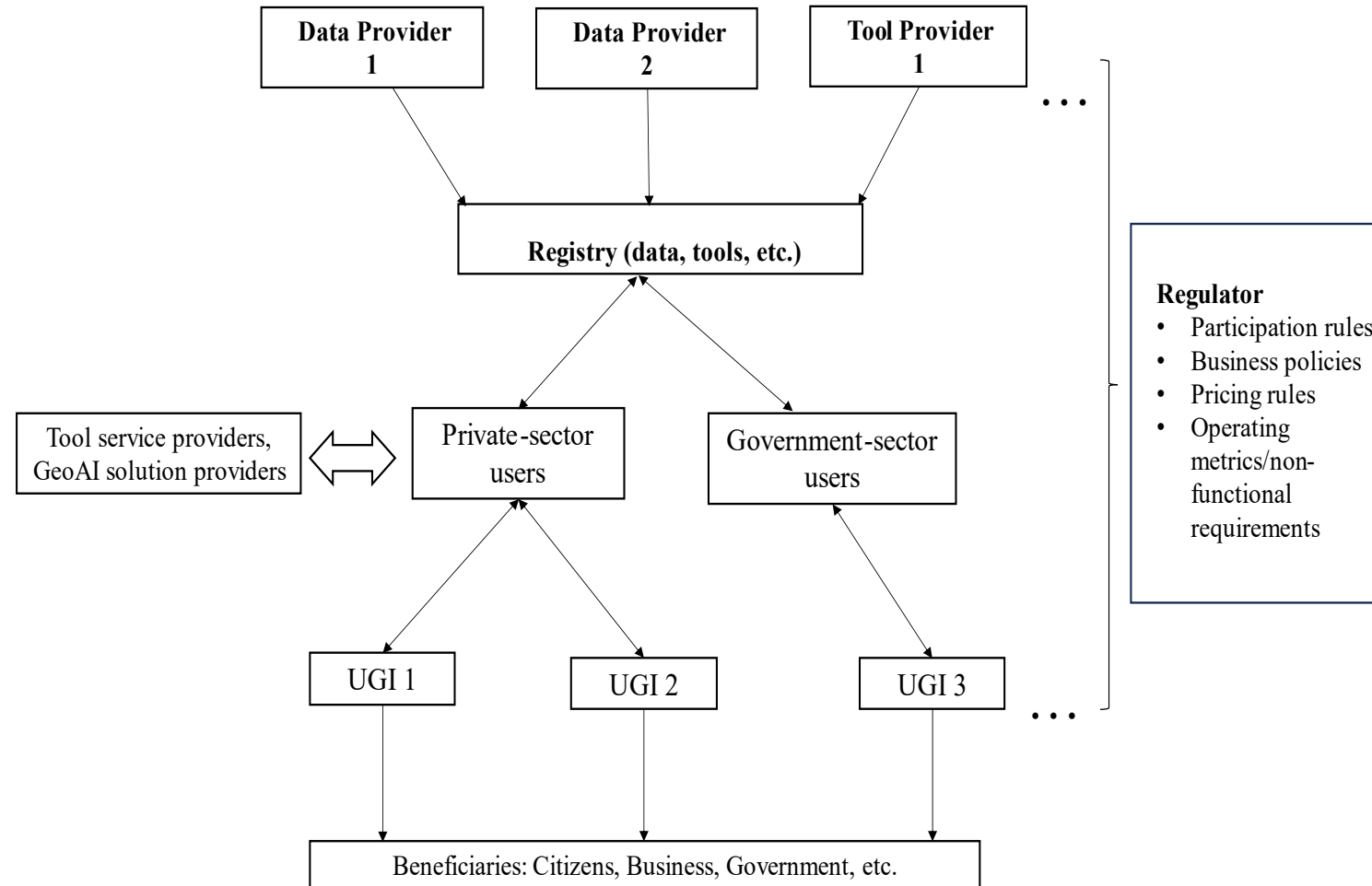
For all sectors of the economy





# Data-sharing Platform

(National Geospatial Data Registry & Unified Geospatial Interface)



# Closing Summary

- National Geospatial Mission: for **strong foundation**
- Scalable citizen-centric model >>>>> **Economic development & thriving information economy**
- Public-Private **Partnerships**