



OpenStreetMap

... putting the crowd in control ...



photo: flickr_jaygoldman_BY-NC-SA

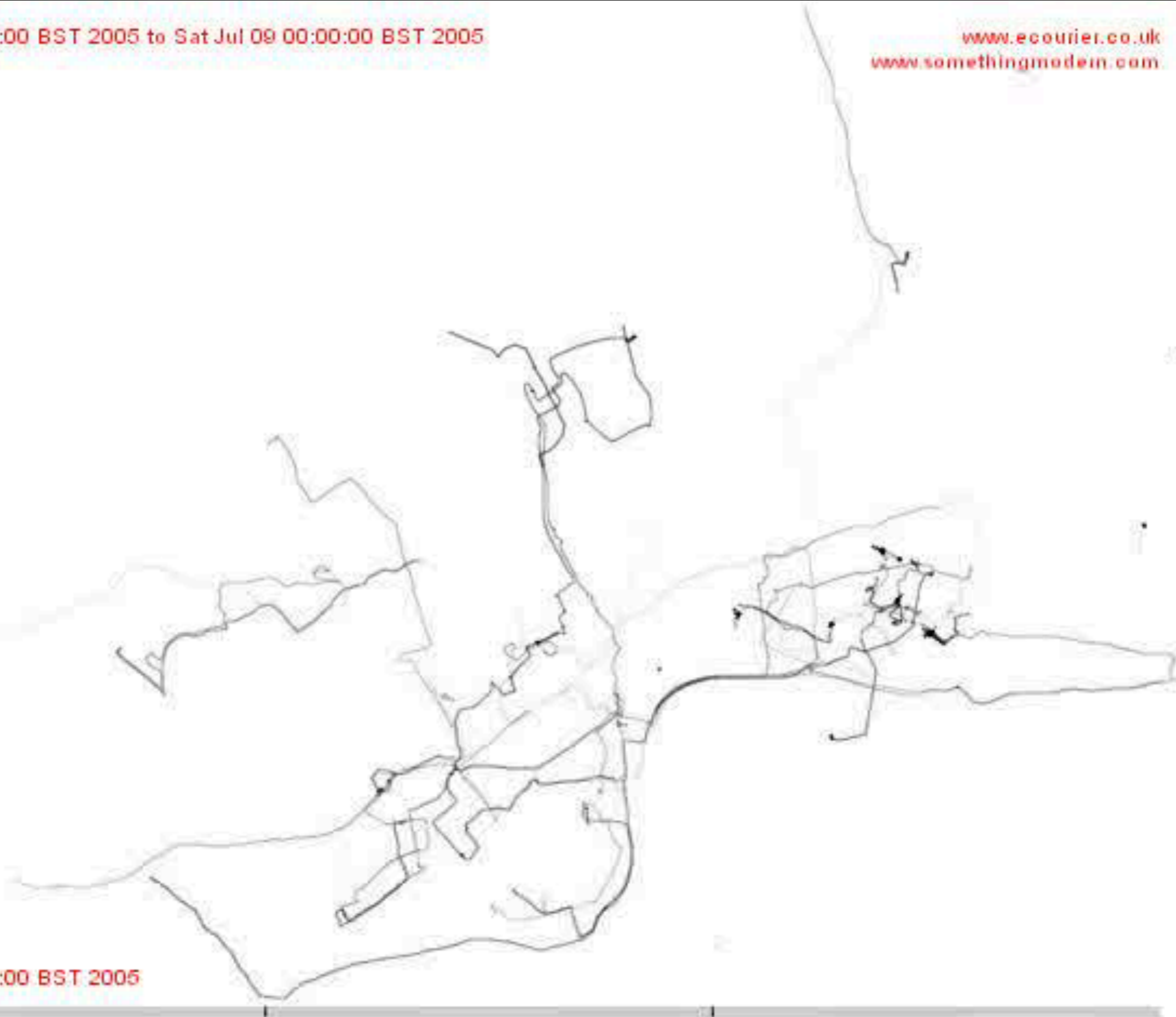


photo: flickr_ StephLaw_BY-NC

woensdag 15 mei 13

Wed Jul 06 00:00:00 BST 2005 to Sat Jul 09 00:00:00 BST 2005
120min window
5min step

www.ecourier.co.uk
www.somethingmodern.com



Wed Jul 06 00:00:00 BST 2005







photo: flickr _ ausnahmmezustand _ BY-NC-ND

Community - Foundation



OSM Foundation

OSM Foundation

- Legal entity that represents the project
- Maintains servers for the OSM project
- Official publisher of the OSM dataset

www.osmfoundation.org

Structure

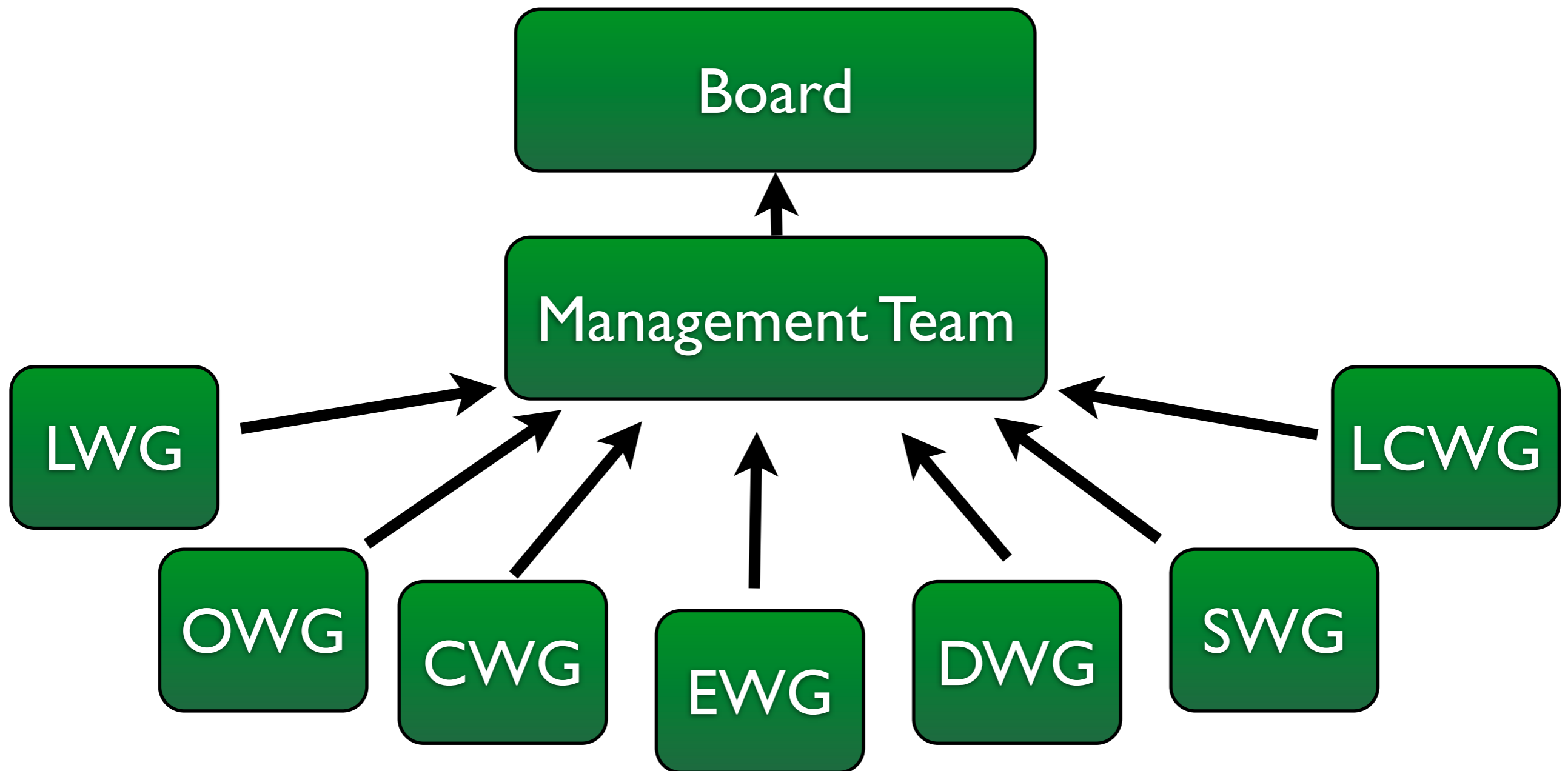


photo: CC-BY-SA by MAPconciierge @ gigapan



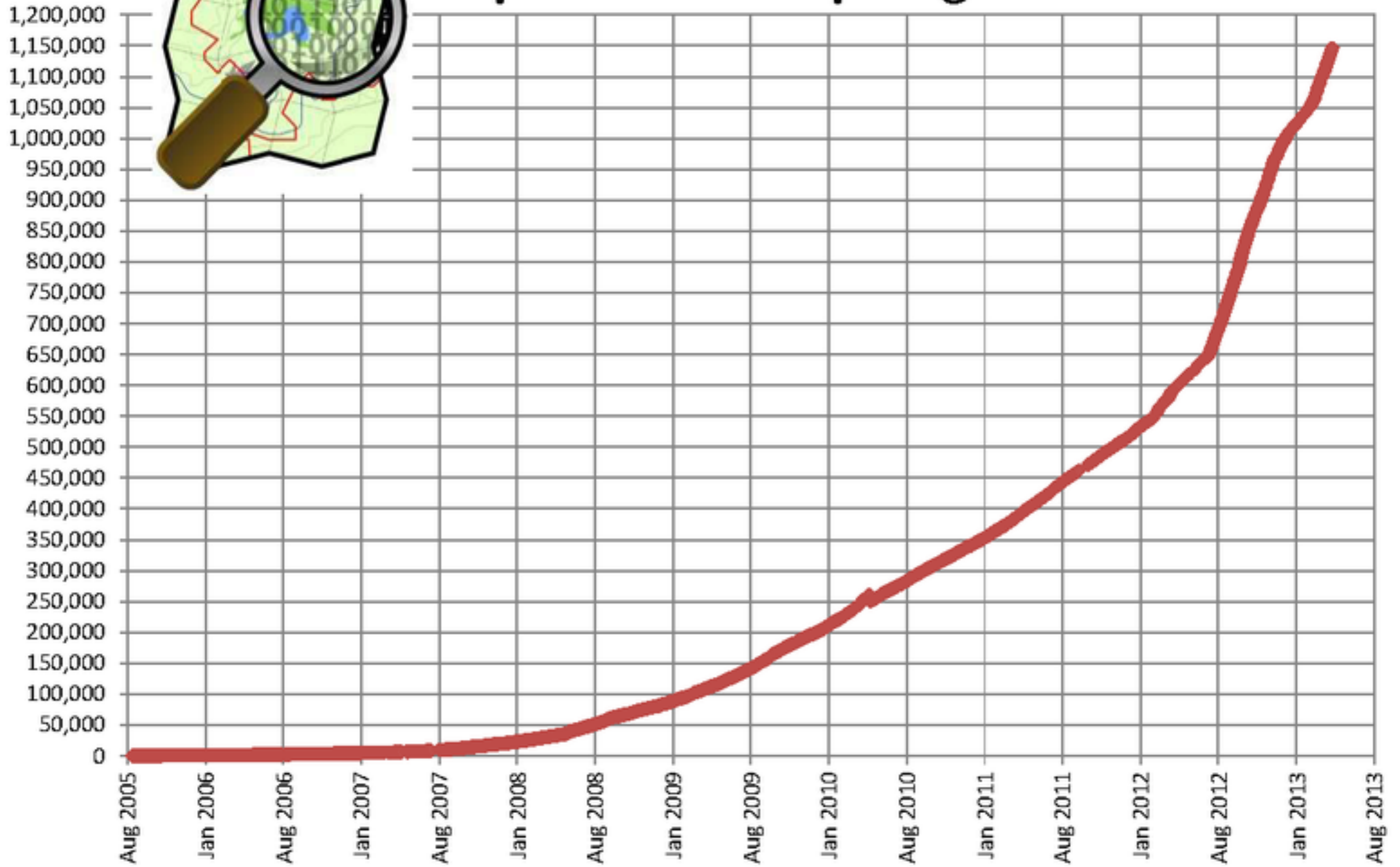
Community

Types of Mappers

- Go-out-and-map
- Armchair mapping
- Data scouting



OpenStreetMap Registered Users



% of total users contributing
(Node edits in last month)





photo: Elisabeth Floor

Freedom!



photo: Henk Hoff

Adventure!



photo: Henk Hoff

Fun!

"Well... could you wait?"



Instant gratification!



@cyclestreets

CycleStreets

User: "I added 1st path to
[@openstreetmap](#) & within a few
days was in [@cyclestreets](#) & used in
routes I plan- hugely satisfying-will
add more"



Zoo Berlin

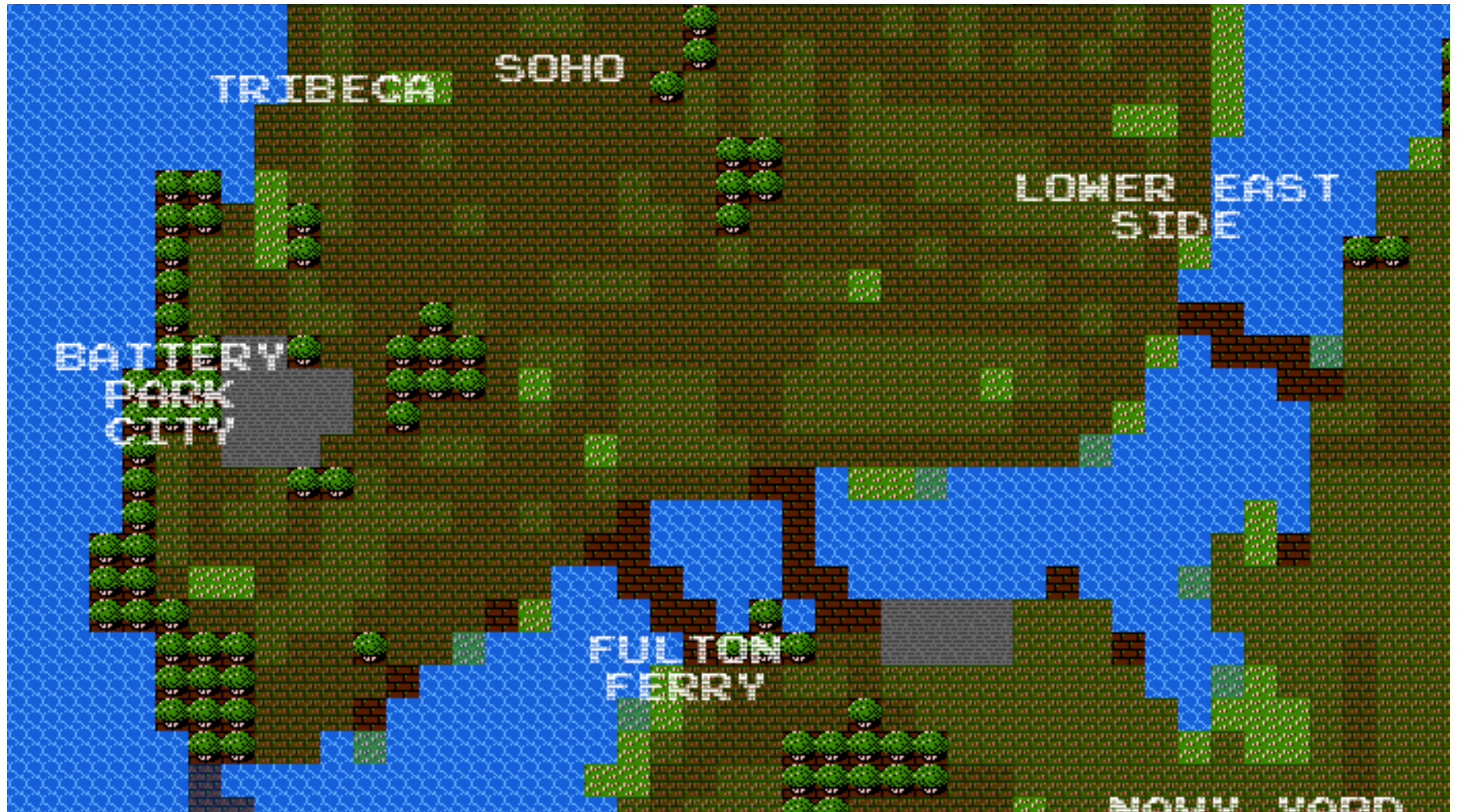


photo: Martin Deutsch @ flickr

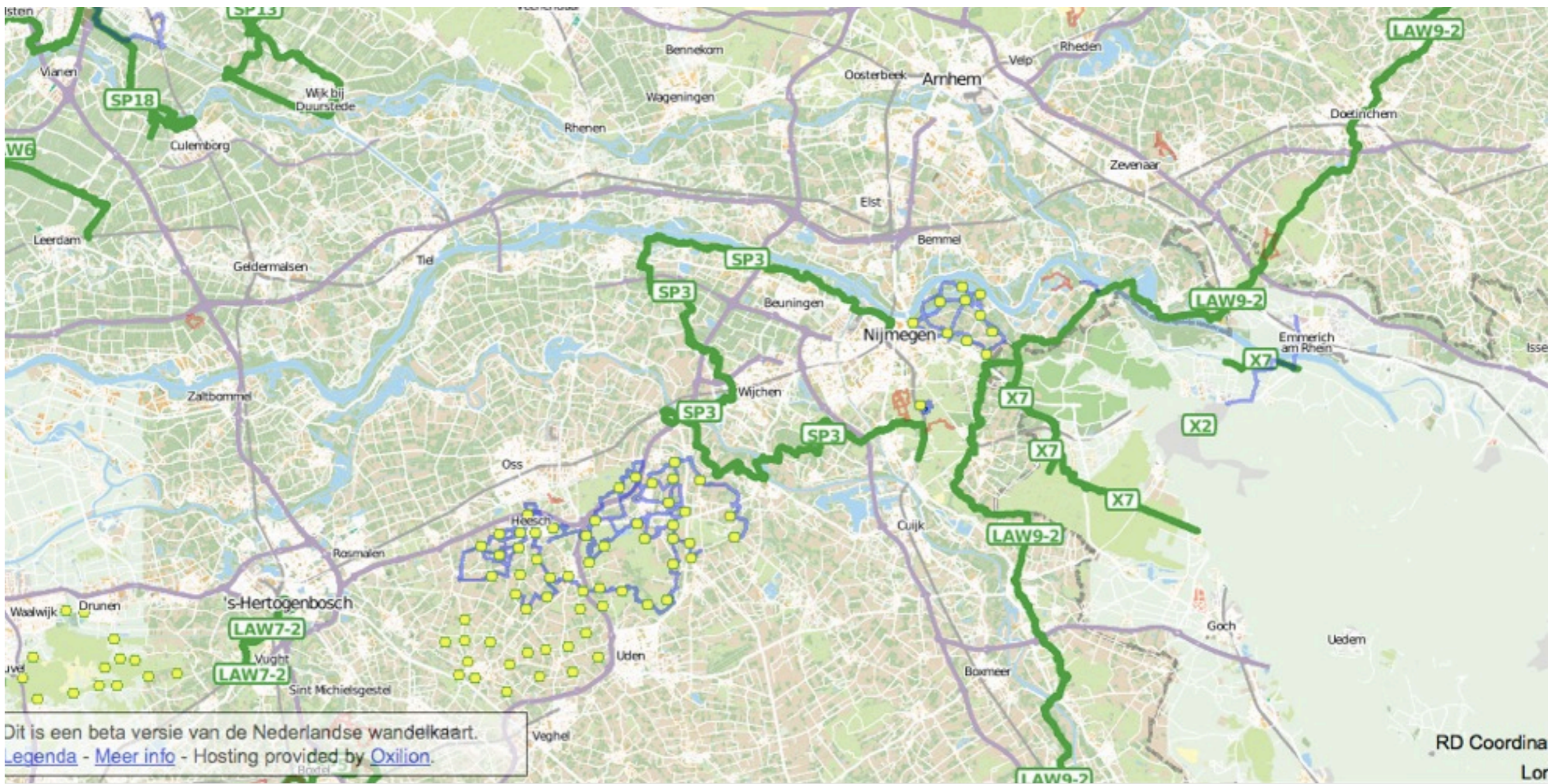
New Maps



Typographical Map




8-bit game map



www.openwandelkaart.nl



www.opencyclemap.org

en 

Start:

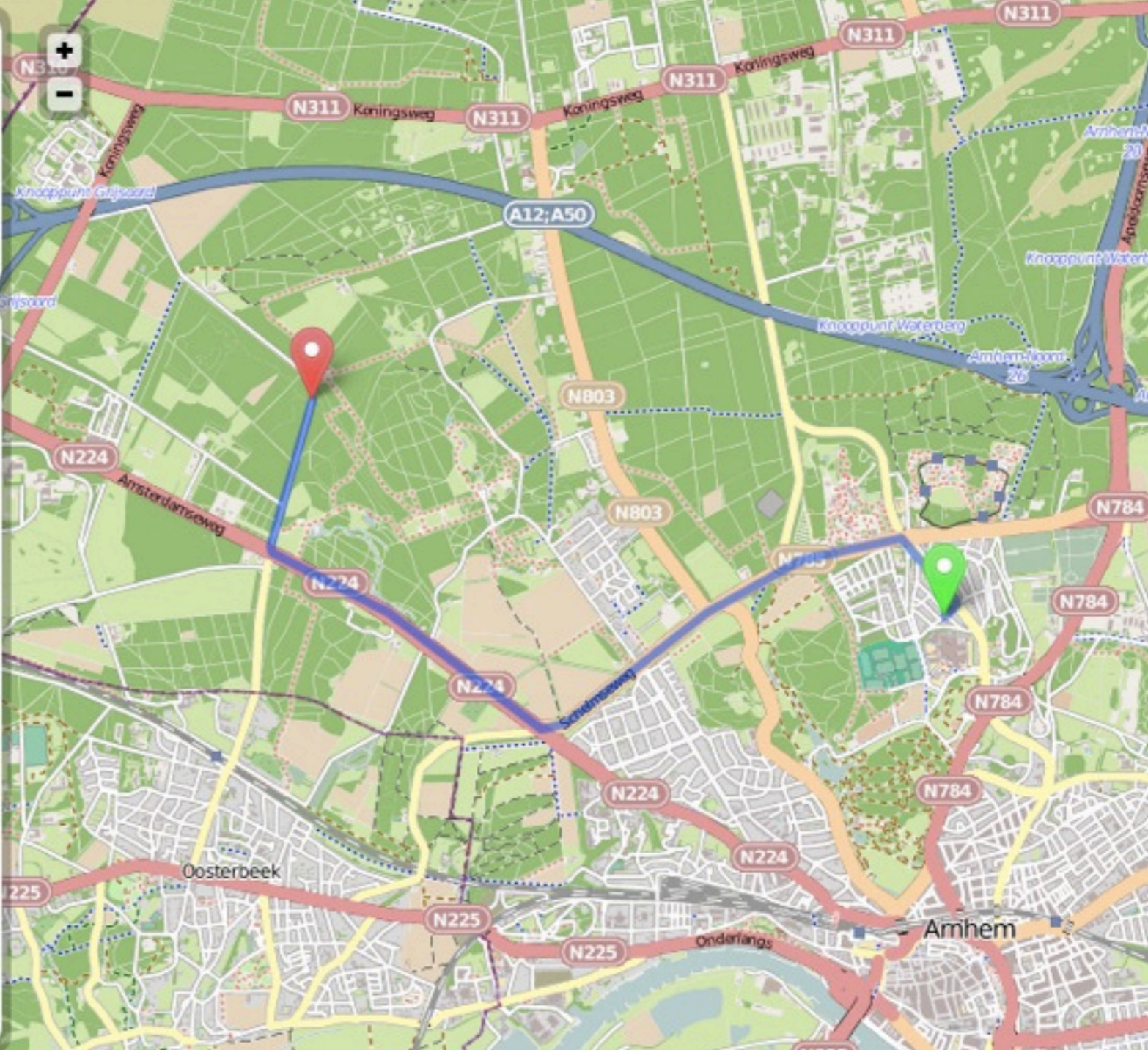
End:

Route Description

Distance: 6.46 km [\[Generate Link\]](#)
Duration: 8 min [\[GPX File\]](#)

Head northeast on Beethovenlaan	0.11 km
Turn slight left on Cattepoelseweg	0.24 km
Turn sharp left	15 m
Turn slight right on Cattepoelseweg	0.32 km
Turn left on N785	1.35 km
Continue on Schelmseweg	1.32 km
Turn slight right on N224	2.08 km
Turn right	41 m
Turn right on Harderwijkerweg	0.98 km
You have reached your destination	

GUI2 v0.1.6 120516 - OSRM hosting by [KIT](#) - Geocoder by [OSM](#)



map.project-osrm.org

Rollstuhlrouting.de - barrierefreie Routenplanung

Startpunkt bestimmen

Start

Zielpunkt bestimmen

Ziel

Optionen

Maximale Steigung

Oberfläche

Maximale Bordsteinhöhe



rollstuhlrouting.de



Blankets

BETA **mapquest** m^o open

Print Send To Link http://map

SEARCH FOR (Ex. An address, a landmark)

+ Get Directions

Featured Sites These maps are different! Learn more about open data » OR GO BACK TO MAPQUEST.COM »

Feedback

OpenStreetMap powered by mapquest m^o Close

It's your map!

Tired of maps without enough detail?

Together, we can create maps that look like this!

« Learn how to contribute to OpenStreetMap

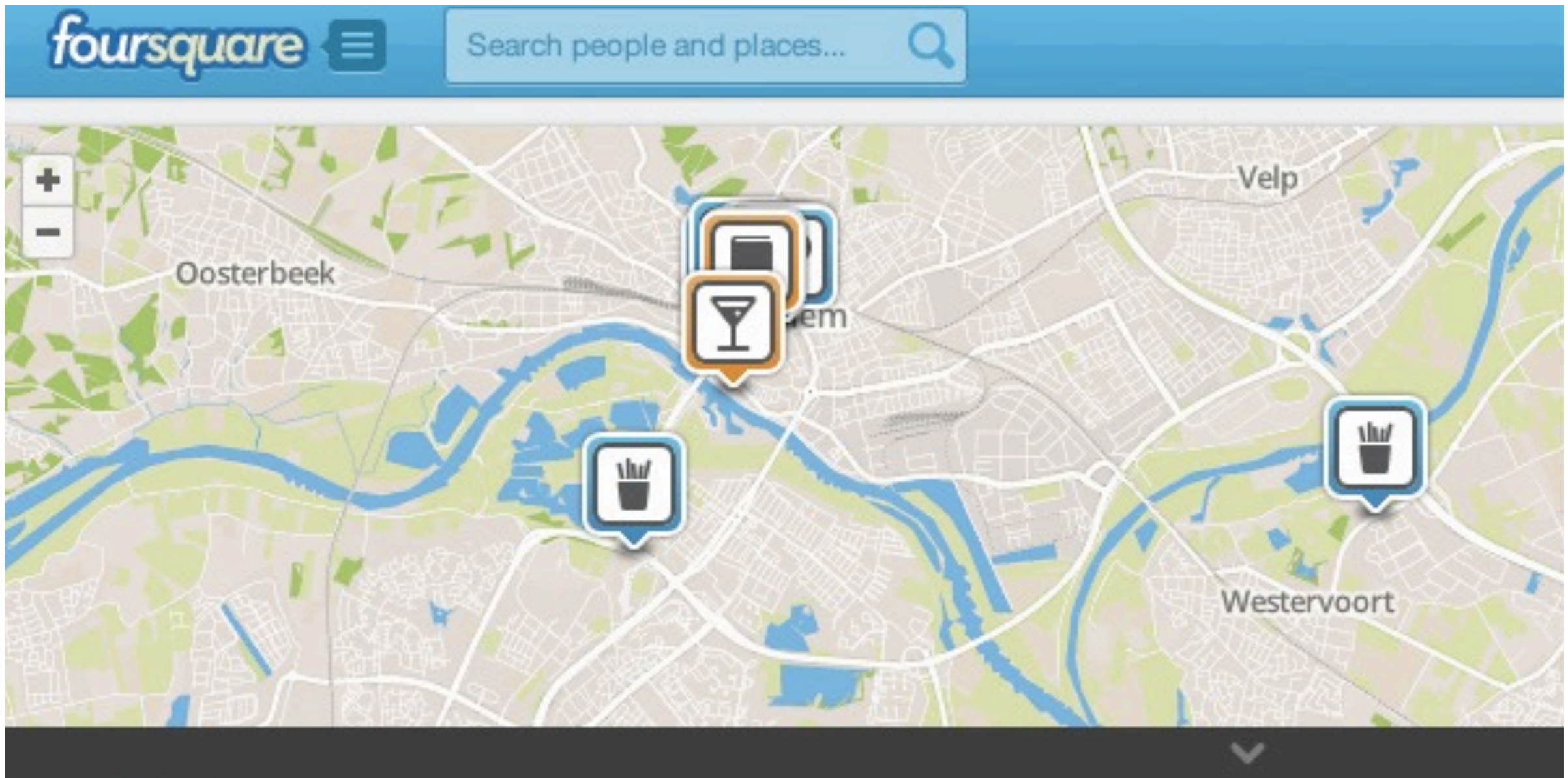
Try it Now »

mapquest 100mi 200km

Legal MapQuest AOL

©2010 MapQuest - Map data © OpenStreetMap and contributors. CC BY SA

MapQuest



FourSquare

Community in Control

The ever changing world

... how we cope with it ...



9 10 11 12 13 14 15 16 17 18 19 20 21 22 23 24 25 January 2010

OpenStreetMap
CC-by-SA www.itoworld.com
Map data www.openstreetmap.org 31 Jan 2010

Video at <http://vimeo.com/9182869>

These photos were taken from the same spot.

(Before the disaster)



(After the disaster)



You can see the remains of the yellow center line and the foot path in the bottom picture

“My GPS logs are full of memories and people’s lives before the disaster. I hope they can be used as the region rebuilds in the future.”

Kinya Inoue

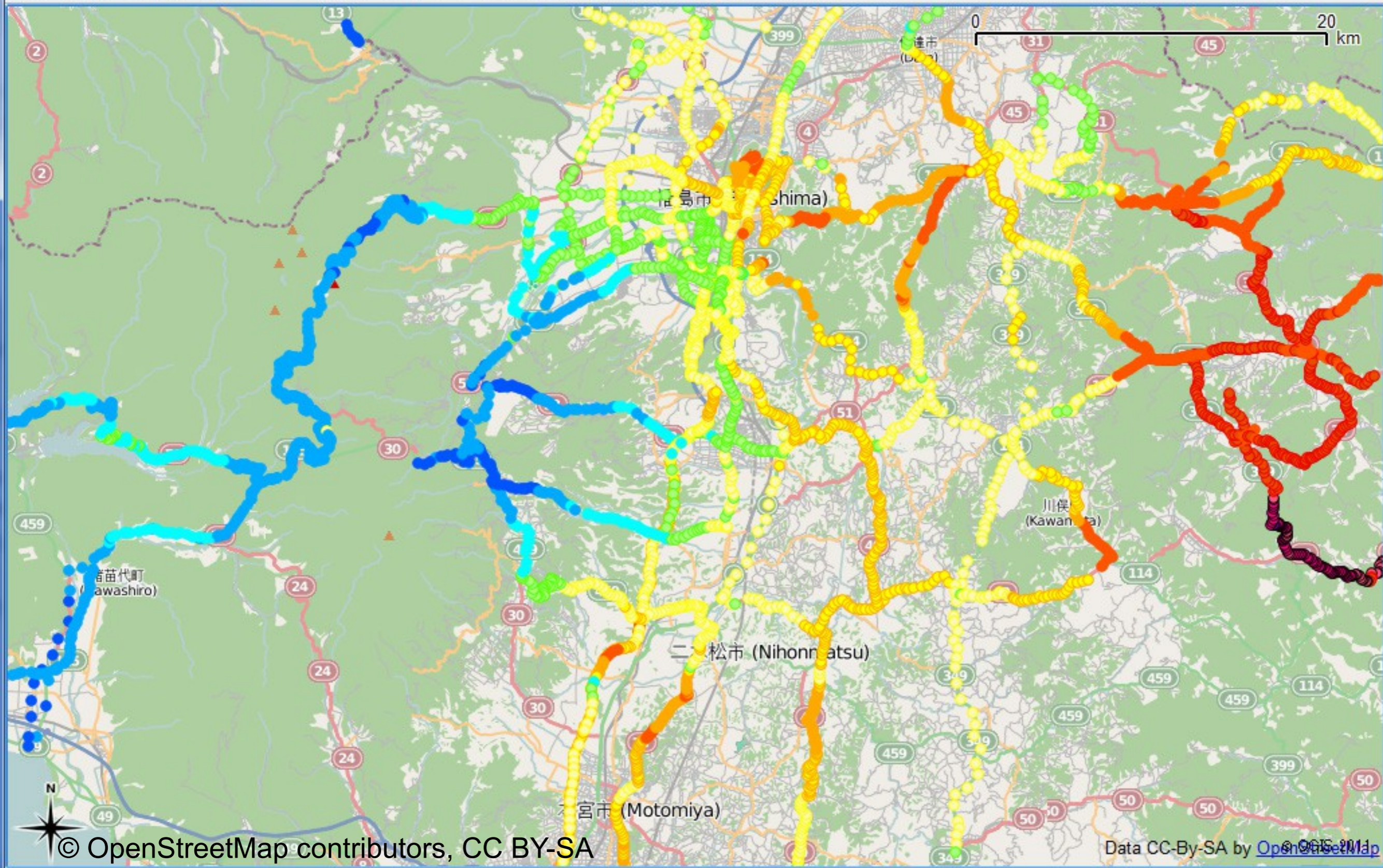
Following the accident citizens were not made aware of the distribution of radiation.

After the accident, measurement and release of radiation data by the government was too slow.

Slide by: Kinya Inoue

Photo : After the disaster / Iwaki city, Fukushima

ファイル(E) 編集(E) ビュー(V) レイヤ(L) 設定(S) プラグイン(P) ラスタ(R) ベクタ(t) ヘルプ(H)



© OpenStreetMap contributors, CC BY-SA

Data CC-BY-SA by OpenStreetMap

座標: 15672561,4508788 縮尺: 1:288607

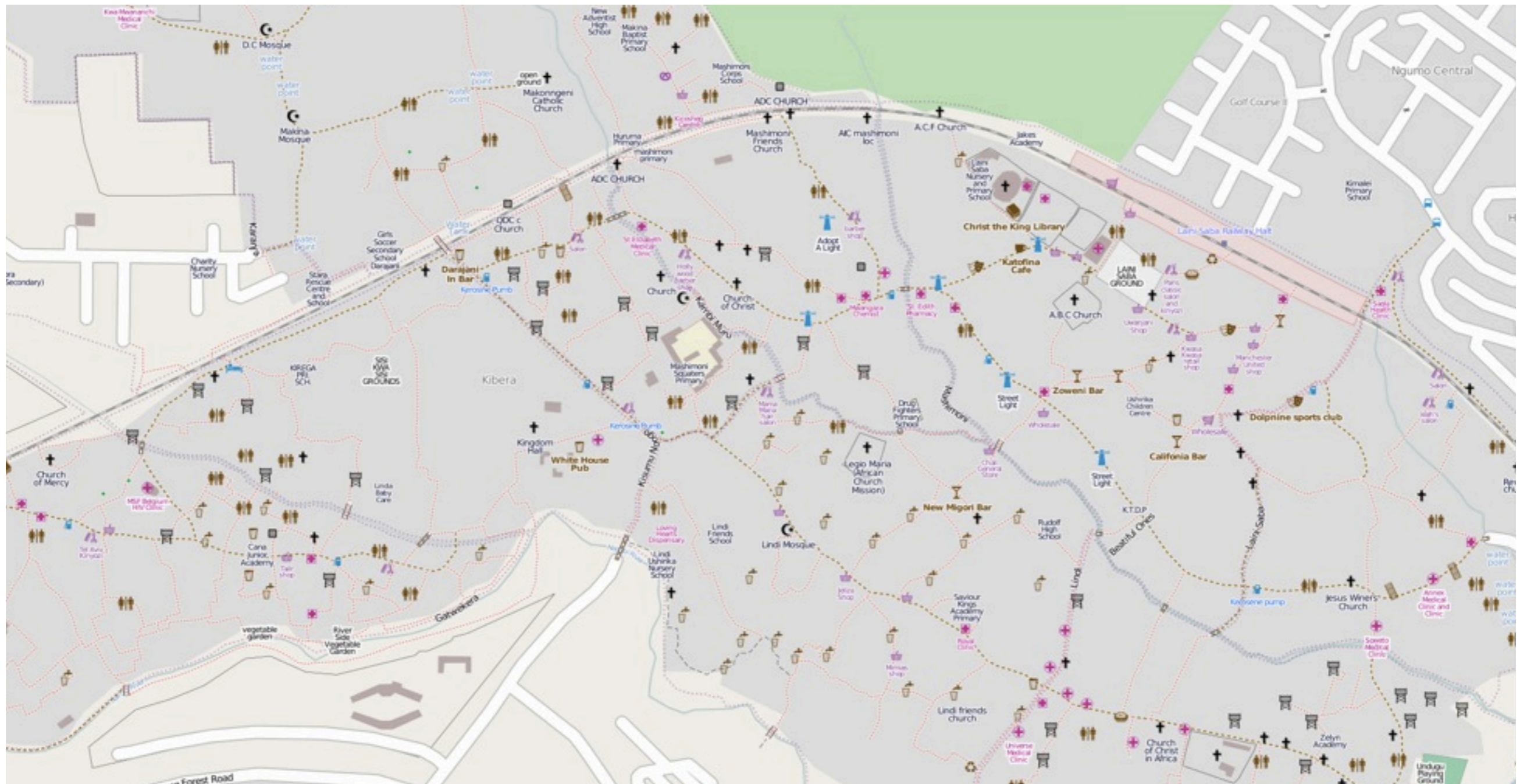
Slide by: Kinya Inoue

The ever changing world

... how we are changing it ...



Unexpected places



Kibara

Community Diversity

Not Regulate

But Facilitate

Free = Free

You are free ...



To Share

To copy, distribute and use the database



To Create

To produce works from the database



To Adapt

To modify, transform and build upon the database

As long as you ...



Attribute

You must attribute any public use of the database, or works produced from the database, in the manner specified in the ODbL. For any use or redistribution of the database, or works produced from it, you must make clear to others the license of the database and keep intact any notices on the original database.



Keep Open

If you redistribute the database, or an adapted version of it, then you may use technological measures that restrict the work (such as DRM) as long as you also redistribute a version without such measures.



Share-Alike

If you publicly use any adapted version of this database, or works produced from an adapted database, you must also offer that adapted database under the ODbL.

Quality of Data

“OSM quality is beyond good enough, it is a product that can be used for a wide range of activities”

Dr Muki Haklay of UCL

Based on detailed analysis
<http://tinyurl.com/mukiosm>

Newsletter



Open source maps and their alternatives

Open source mapping has really come into the limelight in the past few years, and many businesses have started to experiment with its use in industry. The limelight, however, brings with it closer scrutiny, and recent reports on the accuracy and reliability of open source maps make for uncomfortable reading.

The concept of open source mapping is a very exciting one. As various technologies become more accessible, volunteer mappers can collect information and collaborate to produce shared maps. They're cheap to make, licensing is often free or very low-cost, and users benefit from the knowledge of a large community of updaters.

Contact Us
 Would you like a demonstration of how TomTom can help your business?
 ► [Contact Us](#)

Share

TomTom criticism:

“mapping errors can be extremely dangerous, particularly in the case of one-way streets”

Motorist driven round the bend by faulty sat nav that sent him in wrong direction

May 13 2012 By Jane Barrie

MOTORIST David Warnock is going round in circles – and he’s blaming his sat nav.

His TomTom system is supposed to make his life easier but he has been flummoxed by dodgy directions from the dashboard device.

David, 57, said: “The map data is totally screwed up. I’m never off the phone complaining.

“I’ve compiled lists of all the street names that are wrong and emailed them to TomTom.

“They claim they will update their systems but they do it for a couple of months, then it reverts back.

“I just want someone to sit up, take notice, rattle heads and get this fixed once and for all.” David’s £300 sat nav has been driving him round the bend for the best part of three years since he bought it in Halfords.

He has reported more than 200 mistakes to the manufacturer.

Glasgow’s Kingston Bridge off-ramp at Junction 19 was listed as Boat Brae and the city’s West George Street as Kemp Street.

Hamilton Road in Cambuslang, near Glasgow, was called Rhue-na-Haven Road and Coldstream Road in Strathaven, Lanarkshire, is bizarrely named Bobby Jones Place.

Minicab driver David, of East Kilbride, Lanarkshire, said: “You couldn’t make it up. But the strange street names are just the tip of the iceberg as the sat nav keeps taking me in the wrong direction.

“If I’d followed its advice the last time I used it, I’d have driven over a



photo by Tim Brown, licensed CC-BY 2.0

TRIMET Trip Planner

TriMet Routes
Location Search

Plan a Trip

From: []
To: []

When: Depart 2:12 pm 12/7/2012

Travel by: Transit
Show me the: Quick trip
Maximum walk: 1/2 mile

Plan Your Trip

Portland

SW Jefferson St, SW Madison St, SW Broadway, SW 4th Ave, SW Naito Pkwy, NW Lovejoy St, NW Glisan St, NW Everett St, NE Couch St, SE Belmont St, SE Grand Ave, SE 12th Ave, SE Powell Blvd, NE Martin Luther, NE Lloyd Blvd, Morrison Bridge, Hawthorne Bridge, Ross Island Bridge

500 m / 2000 ft

-122.6930, 45.5305

Portland (USA) Public Transport



Tune your experience

Why does your map have to look the same as every other one on the internet?

With OpenStreetMap data you can create your own map, showing the features that *you* want to show, the features which are important to *your* users.

[HOME](#) [WHY SWITCH?](#) [CASE STUDIES](#) [THE BASICS](#) [USING TILES](#) [SERVING TILES](#) [OTHER USES](#) [PROVIDERS](#) [FIND OUT MORE](#)

Home

Take back control of your maps

Do your maps look like everyone else's? Are you paying high fees just to include maps on your website?

Switch to OpenStreetMap and discover how you can build beautiful maps from the world's best map data. We give you the data for free; you can make any map you like with it. Or benefit from the expertise of those already using OpenStreetMap. Host it on your hardware, or elsewhere. You have control.

We give you the data for free; you can make any map you like with it. Or benefit from the expertise of those

Switch to OpenStreetMap and discover how you can build beautiful maps from the world's best map data.

Do your maps look like everyone else's? Are you paying high fees just to include maps on your website?

switch2osm.org

LINKS

- [OpenStreetMap](#)
- [OSM data download \(planet.osm\)](#)
- [OSM Foundation](#)

META

- [OSM Foundation](#)
- [OSM data download \(planet.osm\)](#)
- [OpenStreetMap](#)

Beginner's Guide

Read this

Chapter 1 – Introduction

Chapter 2 – Beginning OSM

Chapter 3 – Getting Started With JOSM

Chapter 4 – Using the GPS

Chapter 5 – Using Walking Papers

Chapter 6 – Editing OpenStreetMap with JOSM

Chapter 7 – Advanced Editing

Chapter 8 – Moving Forward

Beginning OpenStreetMap

A Field Guide for Everyone

from the

Humanitarian OpenStreetMap Team

Every one can contribute to OpenStreetMap, a project with the lofty goal of making a world map where the map software is free and open source, and the data is open for anyone to use. For example: if you make a map of your town and I make a map of mine, we can share those maps on a common platform. With enough people contributing, we can make maps and collect data throughout the world.

This introduction to OpenStreetMap is a step by step guide designed to help anyone get

This introduction to OpenStreetMap is a step by step guide designed to help anyone get

we can make maps and collect data throughout the world

with enough people contributing

learnosm.org

Download PDF



- [English](#)
- [Bahasa Indonesia](#)
- [Italiano](#)
- [日本語](#)
- [Polski](#)

New: Program released!



Upcoming Event

DATE Jun 10th 2013

LOCATION San Francisco

Register Here!

osmplus.co



Donate to OpenStreetMap New server and fund raising drive 2013

Our amazing community is making OpenStreetMap the best map of the world. We need to buy a new database server to keep their data safe and to make sure the map is available to edit every hour of every day. Please donate to help our hardware keep pace with the astounding growth of OSM. [Further Details >>](#)

9.91%

donate.openstreetmap.org



Henk Hoff

henk.hoff@osmfoundation.org
+31 6 4808 8925

www.openstreetmap.org

www.osmfoundation.org

wiki.openstreetmap.org

mailinglist

IRC