



Strengthening National Missions through Geospatial, IoT & Data-Driven Water Management

Presented by:
Prakash Yadav, SVP – Energy & Special Projects
Ceinsys Tech Ltd.

India's Policy Push Towards Integrated, Data-Driven Water Governance



National Mission for Clean Ganga

About Jal Jeevan Mission

With speed & scale



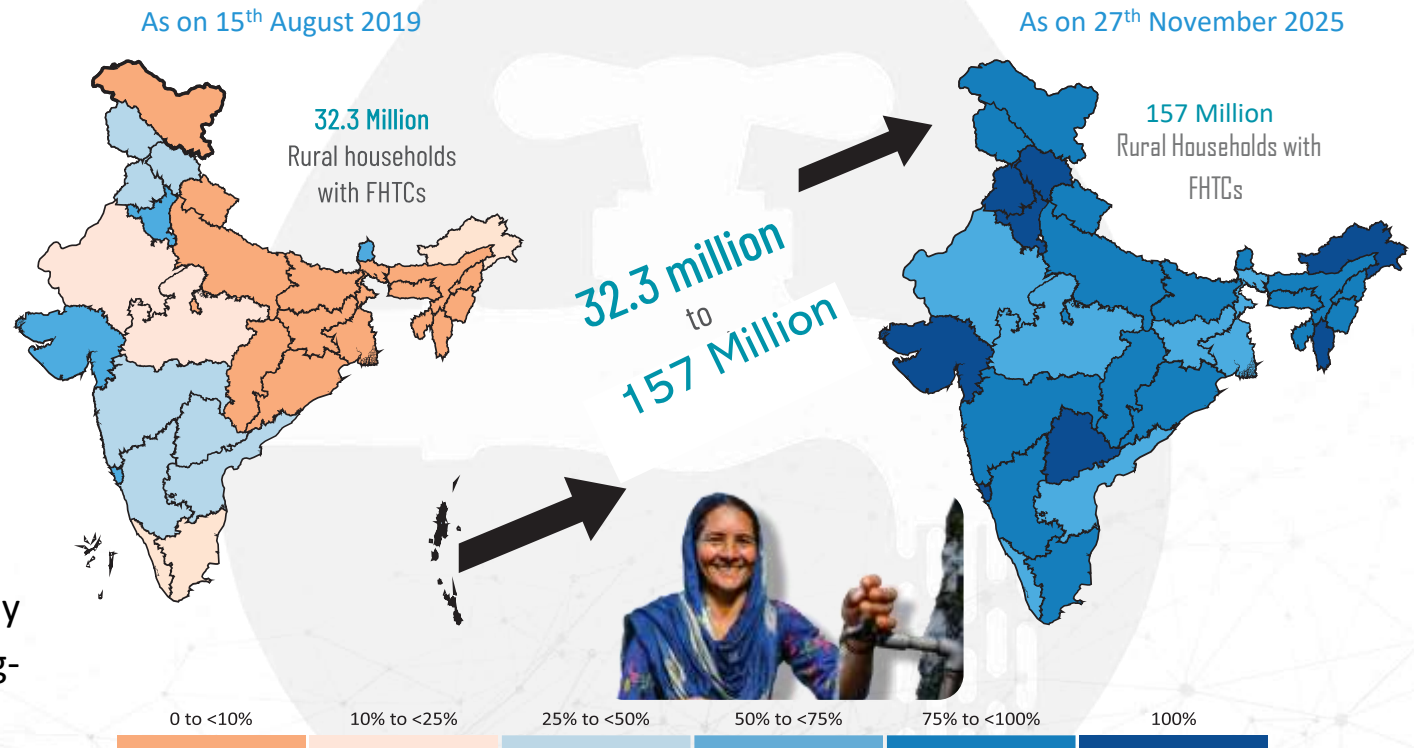
Vision

Every rural household has drinking water supply in adequate quantity of prescribed quality on regular and long-term basis at affordable service delivery charges leading to improvement in living standards of rural communities.



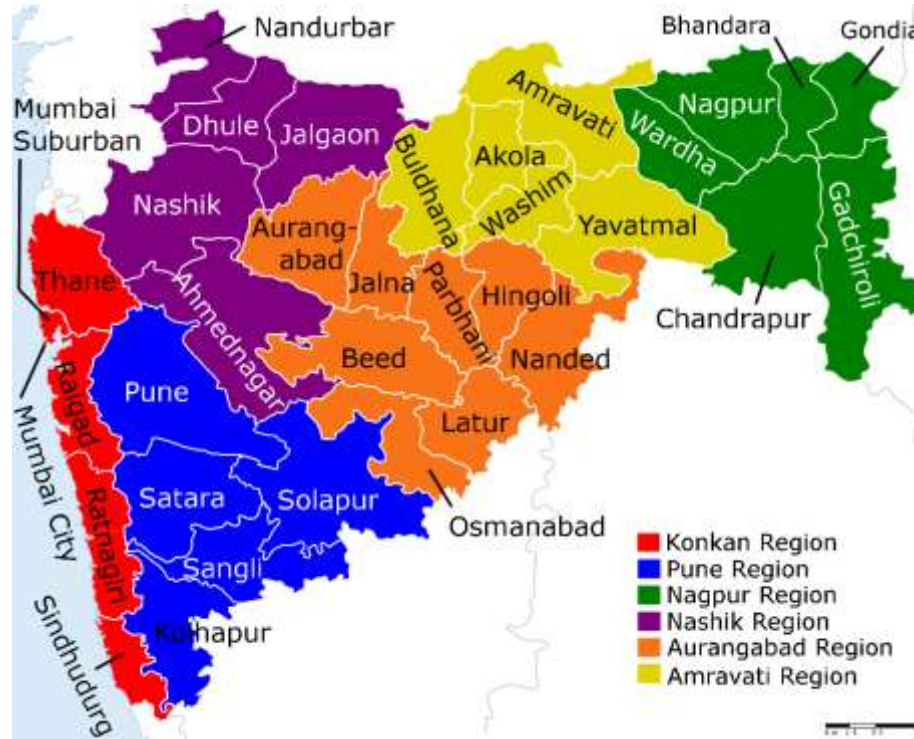
Mission

Jal Jeevan Mission is to assist, empower and facilitate: States/ UTs in planning of participatory rural water supply strategy for ensuring potable drinking water security on long-term basis to every rural household and public institution



Major Projects activities :

Dash boarding at Centralized IoT Platform



Centralized IoT infra development



Site Survey



IoT Field implementation

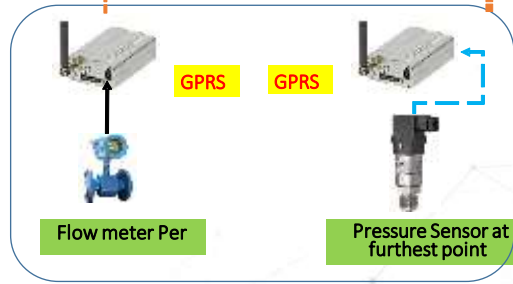
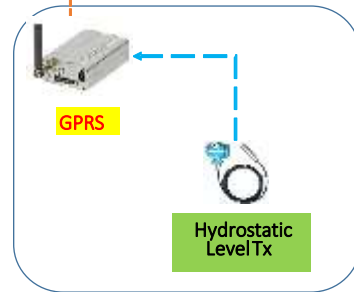
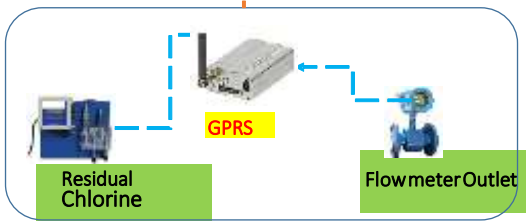


Covering around 9000 Villages under MVS in the State of the Maharashtra

IOT - Project Overview



Integrated Command Control Central



Navigation: Maharashtra > Region > Circle > Division > Sub Division > Block > Scheme > Village > ESR

IOT Project Overview

Region - 8	Number of Circle - 14	Number of Division - 37
Number of Sub Division - 143	Number of Scheme - 309	

MetaData Received

Region - 6	Number of Circle - 17	Number of Division - 33
Number of Sub Division - 66	Number of Block - 170	Number of Scheme - 310

Villages, Population, Household covered under Scheme

Number of Villages - 3,878	Population - 8,854,256	Household - 1,987,294
----------------------------	------------------------	-----------------------

Reservoir Information

ESR - 6210	OSR - 396	MBR - 763
------------	-----------	-----------

Connected Information

Connected Scheme - 126	Connected Villages - 1,100	Connected ESR - 1,413
------------------------	----------------------------	-----------------------

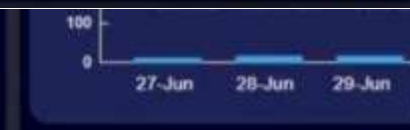
Performance (KPI's)

Liter Per Capita Day (LPCD) - Scheme		Liter Per Capita Day (LPCD) - Village	
31	86	221	676

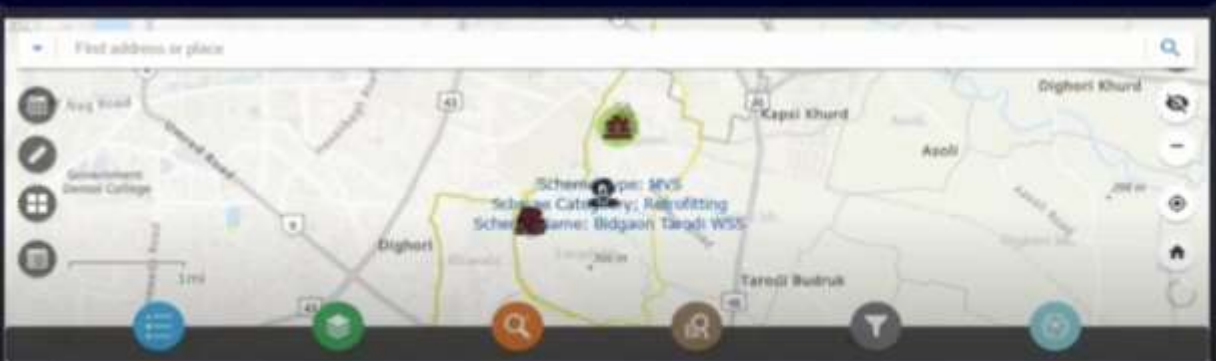
Chlorine (mg/l) - Number of Reservoir		Pressure (bar) - Number of Reservoir	
1	170	27	29

Village Level Performance (KPI's)

Liter Per Capita Day (LPCD) - Village		Chlorine (mg/l) - Number of Reservoir			Pressure (bar) - Number of Reservoir		
>55 LPCD	<55 LPCD	0.2 - 0.5 mg/l	< 0.2 mg/l	>0.5 mg/l	>0.7 bar	0.2 - 0.7 bar	<0.2 bar
1	1	1	2	0	3	0	0



Village Name	Bidgaon
	Tarodi Kh.



Bidgaon

ESR 3.73 LL - 1

GL

ESR Nageshwarnagar- 3.73 LL

GL

ESR 3.73 LL - 1

Scheme ID - Name :- 7940695 - Bidgaon Tarodi wss

Village Name :- Bidgaon

Reservoir Details

Region :- Nagpur	Circle :- Nagpur	Division :- Nagpur
Sub Division :- Nagpur	Block :- Kamptee	Habitation :- Bidgaon
Reservoir Type :- ESR	Reservoir Category :- Existing	Reservoir Capacity :- 3.73 LL

Line Details

	Line Size	Line Materials
Inlet Line	200MM	DI K-7
Inlet Rising Line	250MM	DI
Distribution Line	90MM	PVC
Outlet Line	250MM	DI K-7

Time Duration Water Supply

10.34 hours

Operator Details

Operator Name :- Shriram Bawankule

Contact Number :- 8208266794

Critical Parameters

Water Consumption Per Day		Chlorine (mg/l)		Pressure (Bar)		
Previous Day	Current Day	Previous Day	Current Day	Minimum	Maximum	Present
14.70 LL	7.90 LL	0.00 mg/l	0.00 mg/l	0.00	0.72	0.72

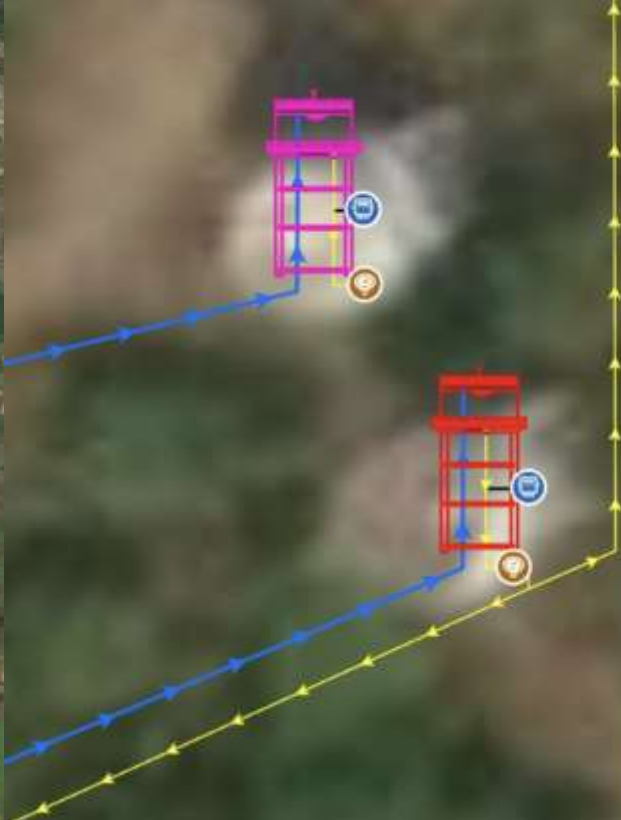
Water Consumption (LL)

Date	Consumption (LL)
27-Jun	11.26
28-Jun	16.54
29-Jun	16.24
30-Jun	15.82
01-Jul	11.44
02-Jul	14.70
03-Jul	7.90

Chlorine (mg/l)

Pressure (bar)





Pop-up

Flow_Meter (1)
 Retro. Rui and 1 Village WSS Tal. Rahata

Flow_Meter - Retro. Rui and 1 Village WSS Tal. R...

Scheme Name	Retro. Rui and 1 Village WSS Tal. Rahata
Scheme ID	20091928
Region Name	Nashik
Circle Name	Ahilya Nagar
District Name	Ahilya Nagar
Division Name	Sangamner
Village Name	Shingve
Meter Size (Dia) in MM	200
Installation Date	25-10-2024
Manufacturer	SBEM
Serial Number	19551
Modem Make	MCOM
Modem Serial Number	861657074900551
Sim Serial Number	8991272173227825393
Sim Operator	Airtel
Date Of Integration	25-11-2024

74°33'E 19°47'58"N

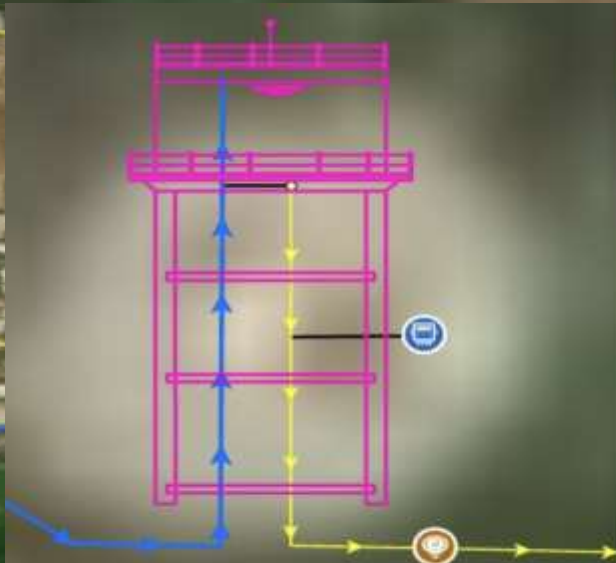
Pop-up

Residual_Chlorine_Analyser (1)
 Padli and 5 villages

Residual_Chlorine_Analyser - Padli and 5 villages

Scheme Name	Padli and 5 villages
Scheme ID	20021406
Region Name	Amravati
Circle Name	Akola
District Name	Buldhana
Division Name	Buldana
Village Name	Padli
Installation Date	28-08-2024
Manufacturer	ESH
Serial Number	W20C4203G00
Modem Make	MCOM
Modem Serial Number	861198063959159
Sim Serial Number	5754123122680
Sim Operator	Airtel

76°3'7"E 20°31'23"N



ESR - Retro. Rui and 1 Village WSS Tal. Rahata

OBJECTID	2
Scheme Name	Retro. Rui and 1 Village WSS Tal. Rahata
Scheme ID	20091928
Asset ID	ESR20091928000002
No Of ESR	2/4
Primary Source Name	417239_Rui_Existing 3 LL MBR
Name of the Reservoir	417239_Rui_Proposed 0.75 LL ESR
Capacity in LL	0.75
Region Name	Nashik
Circle Name	Ahmednagar
Division Name	Sangamner
District Name	Ahilya Nagar
Habitation	Kohki
Village Name	Rui
X Coordinate	74.500897
Y Coordinate	19.792778
Date Created	11-11-2025



08:24:11



OPERATIONS CENTER

Demonstration: IoT Implementation for Rural Water Distribution Schemes



Thank You

Global

USA, UK, Germany

India

Mumbai, Pune, Nagpur, Hyderabad,
Bengaluru, Lucknow, Delhi, Chennai