



Airports



Energy



Transportation



Urban Infra



Services



Foundation

www.gmrgroup.in

One Nation One Map: GMR Group

December 2025

Our Vision, Values & Beliefs

The GMR Group is driven by its vision and deep-rooted beliefs



“GMR Group will be an Institution in perpetuity that will build Entrepreneurial Organizations, making a difference to Society through creation of Value”



Humility

We value intellectual modesty and detest false pride and arrogance



Entrepreneurship

We seek opportunities - they are everywhere



Teamwork & Respect for Individual

Nurturing a relationship of trust, collaboration and mutual respect



Deliver the promise

We value a deep sense of responsibility and self-discipline, to meet and surpass commitments made



Learning & Inner Excellence

We cherish the lifelong commitment to deepen our self awareness, explore, experiment and improve our potential



Social responsibility

Anticipating and meeting relevant and emerging needs of society



Financial Prudence - Frugality

We spend wisely and judiciously

GMR has positioned itself as an infrastructure conglomerate with presence across various verticals



ESTABLISHED BUSINESS LINES

NEW BUSINESS LINES

AIRPORTS



- 9 airport assets in GMR portfolio
- 4 operational in India (Delhi, Hyderabad, Goa, Bidar), 1 in Indonesia (Medan)
- Nagpur and Bhogapuram in concession
- 1 in Philippines (CEBU) as Technical Service Provider
- ~132M pax handled in CY2024
- 27.5% share of passenger traffic in India

ENERGY



- 2 Coal plants - 1,650 MW
- 2 Gas plants - 1150+ MW
- Hydro - 180 MW commissioned & 1,425 MW under development
- Solar - 25 MW in Gujarat; 1 MW in Rajam; 5 MW at Goa
- Wind Plant – 2.1 MW in Gujarat; 1.25 MW in Tamil Nadu

Energy 2.0

- Installation of 7.57Mn smart meters in UP (India)
- Smart Mobility – Installing EV charging stations

TRANSPORTATION & UI



Transportation

- 2 annuity highway projects: 132kms
- 1 toll project: 35kms
- Railways: 417km (EPC) stretch in Eastern Dedicated Freight Corridor (DFCC)

Urban Infrastructure

- Special Investment Region (SIR) of ~770 acres in TN
- SIR cluster for aerospace, automobile, logistics, engineering & other sectors

SPORTS



- Sports teams in Cricket, Kho Kho, Kabaddi
- Presence in major sport leagues like IPL, WPL, etc.

DATA CENTERS



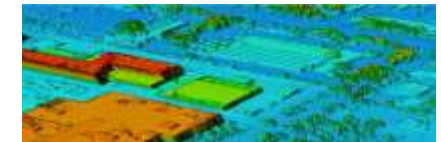
- Pursuing new business opportunities in DC parks

WAREHOUSES



- 3+ Mn sq. ft. of warehouse in pipeline

GEOKNO



- Geospatial solutions and digital twins for critical infrastructure and cities
- 150+ projects delivered

REAL ESTATE



- Realty Development of ~2000+ acres of aerocity, residential, and commercial properties

RETAIL





Airport Predictive Operations Center (APOC)

APOC enabling efficient supervision, monitoring airport supervision via collaboration with all stakeholders. Integration of Geometric twin for location-based applications.

Continuous Transformation

Gramax - Cybersecurity offerings
Innovex - incubating new-age solutions



Biometric Processing (Digi Yatra)

Contactless passenger processing implemented in conjunction with Government of India's initiative 'Digi Yatra' to digitize travel.



DT for Critical Infra

Digital Twins of Critical Infra like airports, power plants, etc. for Land & Asset Management.





Geokno specializes in spatial technologies and digital twins, leveraging advanced LiDAR and imagery systems to capture, process, and analyze high-resolution geospatial data, enabling data-driven decisions and operational efficiency

Value Proposition



Operational costs can be reduced by up to 20% through predictive maintenance and real-time monitoring.



Potential to **reduce infrastructure lifecycle costs by 25–30%**



National Sovereignty in Digital and Geospatial Data for safeguarding critical infrastructure

One Nation One Map platform: Transformative benefits across infra planning and overall economic strength



Single Capture, Multiple Usage

Optimize departmental budgets by leveraging a single data acquisition for diverse applications, minimizing redundancy and maximizing efficiency.

1

Single Source of Geospatial Data

Consolidate data sources across departments, eliminating data silos and ensuring consistent, high-quality data for all stakeholders.

2

Efficient Infrastructure Design

Accurate terrain data enables informed planning and design of infrastructure projects, optimizing resources and maximizing efficiency.

3

Time Savings

Complete geospatial data facilitates faster conceptualization, design, estimation, and implementation of infrastructure projects, accelerating development.

4

Data Monetization Potential

Leverage the data platform for a wide range of private use cases across various sectors, including insurance & banking, E-commerce & Logistics, etc.

5

Increase in GDP

Driving economic growth by fostering innovation, attracting investment, and enhancing the overall competitiveness.

6

Aligning with “**National Geospatial Vision**”,
GMR is building an Integrated Geospatial Ecosystem with Vexcel Data Program



Mapping 50+ Cities by 2027



The background is a solid dark blue color. In the lower right quadrant, there are several overlapping triangles of varying shades of blue, creating a geometric pattern. A thin white horizontal line is positioned to the left of the word 'Thank', extending from the left edge of the frame.

**Thank
you**

**Come visit us
at Booth C4!**