

# SAR EO Intelligence for Resilient Secured Nations

2 December 2025

Oda (Takayuki Odawara)

Executive Officer,  
General Manager of Business Dept.



**Global SAR EO Intelligence supplier since 2018**

**Small SAR Satellite Constellation + Multi-Data Processing + Analytics**

**= Earth Spatial Intelligence for Resilient, Secured, Smiley Nations**

**What Happened, Happening, likely to Happen**

**Disaster**




**Security, Infrastructure**



**Natural Resources, Environment**



# Our Radar (SAR) Satellite : StriX

StriX is a satellite developed with collaboration of government and academia – including JAXA, University of Tokyo with support of  Cabinet office

All-Weather  
Day-and-Night

7 launched  
4 + 1 new baby in orbit

5.0m × 1.0m × 0.8m

0.8m × 1.0m × 0.8m  
(Before Orbit Injection)

Sun-synchronous  
& Inclined Orbit

High-Resolution  
0.25 – 2.6 m

# Our Spatial Intel Angle : Hot Words to tackle **Shared Challenges together**

---

**Sovereign Capacity and  
Capability**

**SPEED !!!**  
(with good quality & value)

**Collaborations**  
Nations, Organizations, Sensors

**COVERAGE**  
Geographic, Time (frequency)

**Multi-Sensor and Data Intel**

**Secured Operations**

# Fresh Spatial Intel for Your Actions

## Speedy Delivery

Today :

30min range ~ 3 Hours Average

XX Minutes in a few years



towards

**Near Real-time**



# Satellite Factory 12 vehicles per year

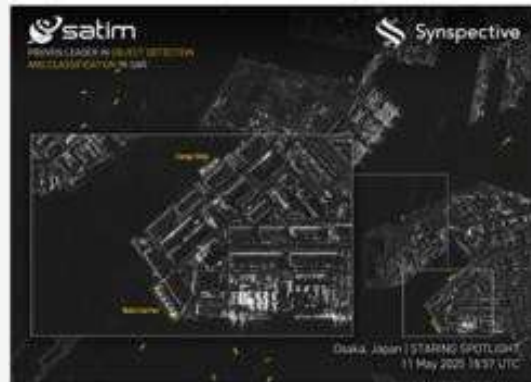
## Synspective Yamato Technology Center since 2024



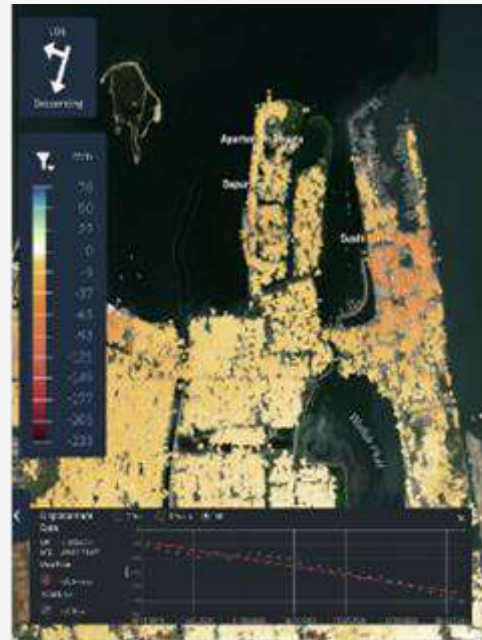
# Broad Coverage at a single shot : East Japan



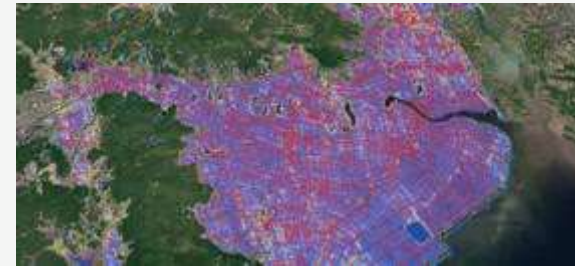
## Object Detection Classification



## Land Displacement



## Disaster Damage

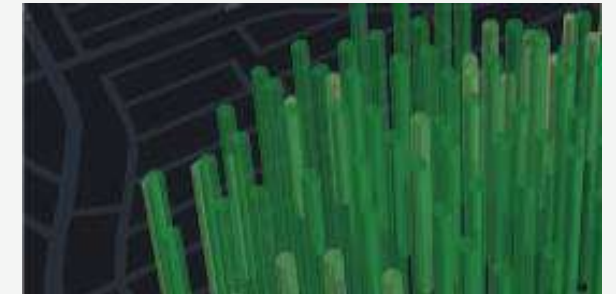


Flood Damage Assessment



Disaster Damage Assessment

## Environment



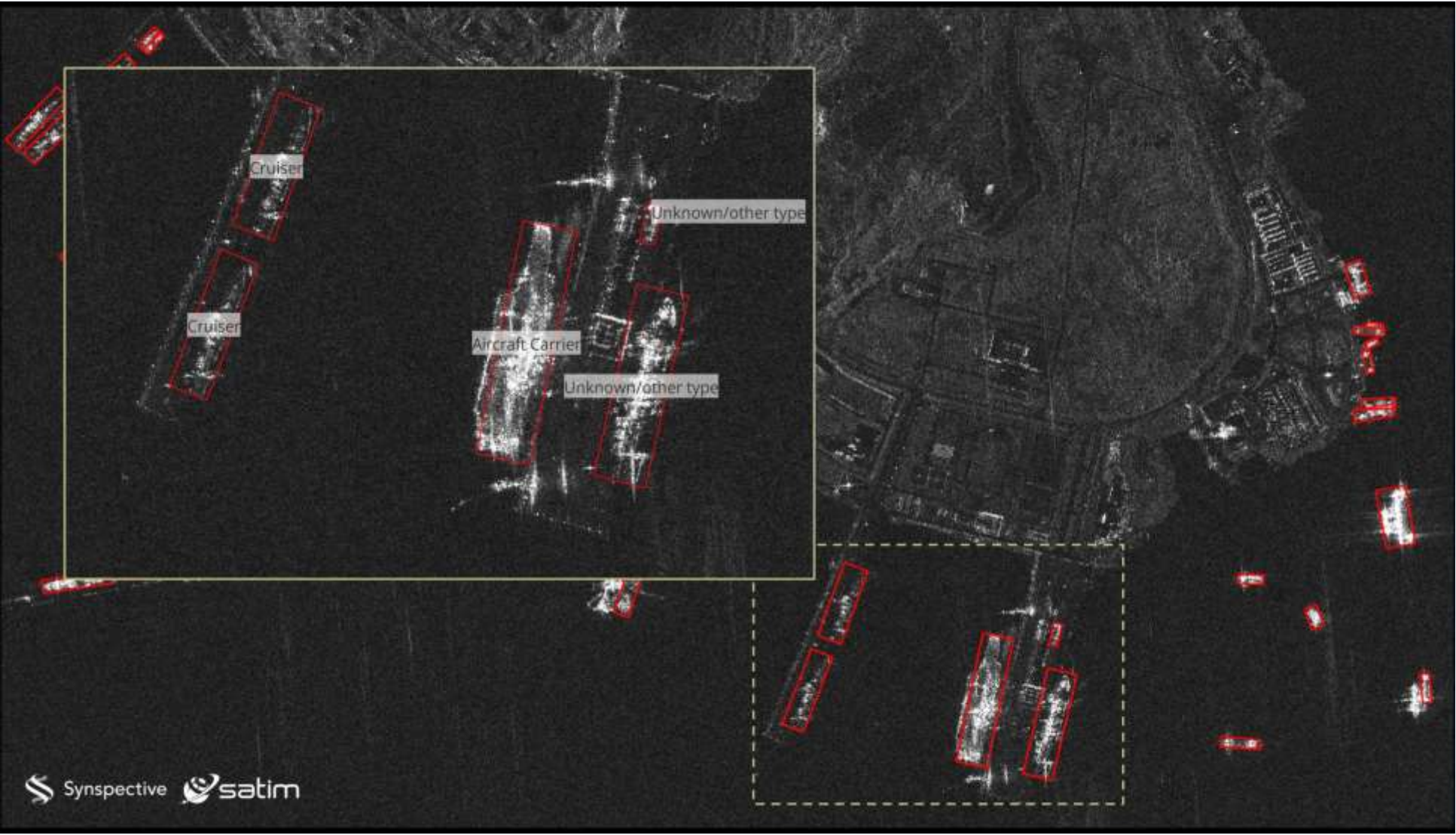
Forest Inventory Management



Offshore Wind and Wave

**ALOS-4 Data and Solution Global Distributor**

# StriX Vessel and AirCraft Detection and Classification



# Rapid Flood Intelligence : Kuji River - Typhoon No. 5 (August 11 to 12 2024)

Captured the water levels of Kuji River before (August 11, 2024) and after (August 12, 2024) the emergency discharge from the Taki Dam in the upper reaches.



SAR Satellite (StriX) **DAILY** Observation

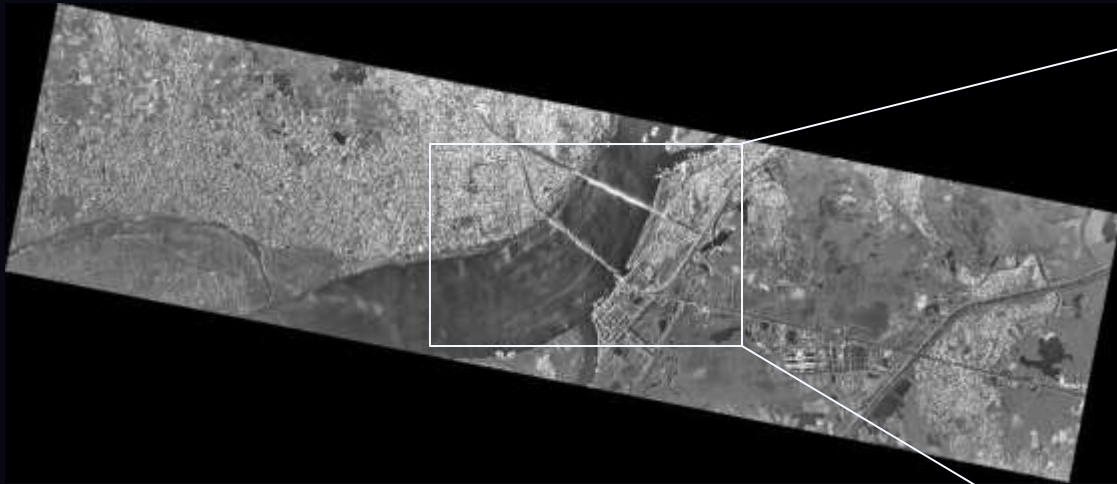
August 11 and 12

**Flood Analytics**

By coloring the observation data from the two periods, the inundation range caused by the river swelling is visualized.

# Damage Assessment of the Myanmar Earthquake M7.7 (March 2025)

StriX Emergency Response for UN SPIDER : Collapse of the Ava Bridge



**SAR Satellite “StriX” Data:**

Date: 2025-03-28

Staring Spotlight Resolution **0.9m x 0.25m**

Synspective offers :

## Complimentary Additions to

# Nations' Resilient Geo-Capacity and Capability

From Synspective



SAR Data  
Multi Sensor Data  
6 + Analytics  
Satellites (future)  
Expertise  
Global Partnerships



To YOU

Easy Access and steering  
Virtual Constellation

Sensor-Collaborations  
With Your Sensors

Your Analytics

Business Growth  
Academia Growth  
Start-Up Growth

**For**

*National Security  
Disaster Aid  
Infrastructure  
Natural Resource  
Agriculture  
Environment  
SMART CITY*

Together, Build Resilient, Smiley Asia-Pacific



Synspective