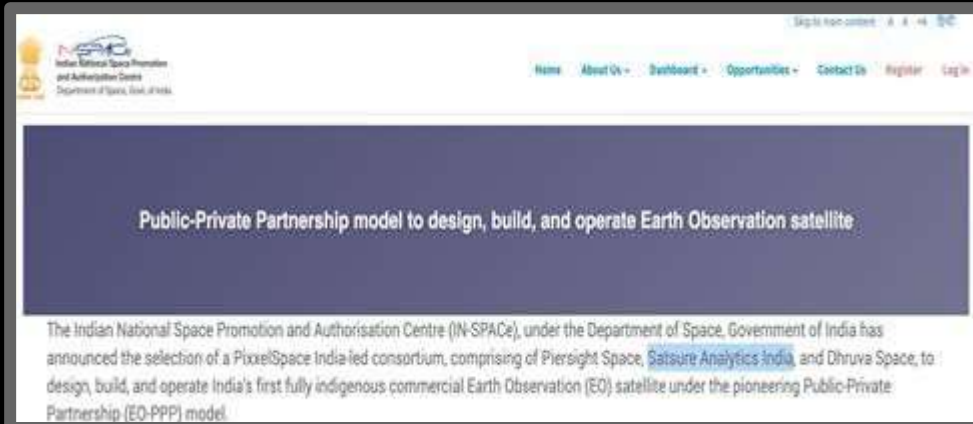


Resilient and Sovereign Space and Geospatial Infrastructure through Collaborative Partnerships



Dec 2025

Prateep Basu
CEO, SatSure



The In-Space led EO-PPP is a first of its kind initiative towards building collaborative partnerships between the government and private sector, for increasing the economic contribution of the space sector to the country's GDP

ALLIEDORBITS PVT LTD (SPV)

Consortium Members

pixxel

SATSURE

PIERSIGHT

**DHRUVA
SPACE**

Assets

2 Hyperspectral +
5 Hi-res satellites

3 Optical+MS Satellites

2 SAR (Radar) satellites

3+ Ground Stations

**Revenue
Type**

DATA +VAS

DATA+VAS

DATA+VAS

OPEX

Key Strengths

Satellite platforms,
hyperspectral satellite

Payload design, EO
applications, AI

SAR payload design

Ground stations,
mission control

NIC + SatSure for Mapping 100 million rooftops



- SatSure was engaged by NIC under the Svamitva project for assisting mapping of rural features like rooftops, roads, water bodies, etc. using 3cm drone imagery
- Project timeline was tight, and it was not possible to manually digitize these features at the scale required

The Scale

4

States

150,000

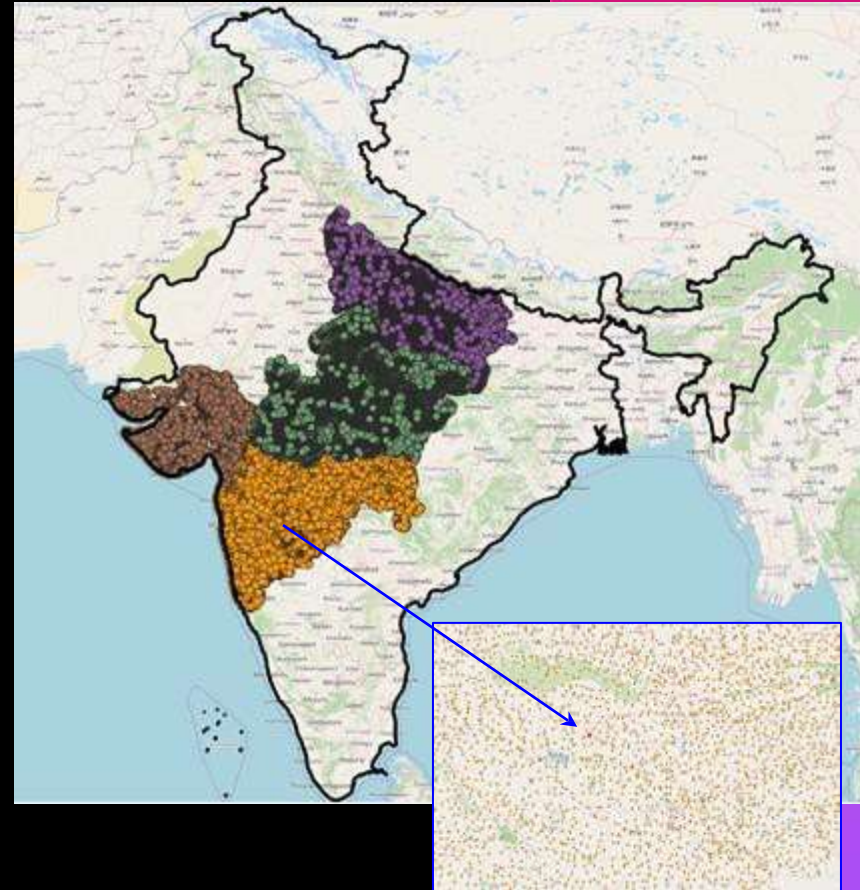
Number of villages

700 TB

Total data processed

>10 M

Patches to be processed



Roof-type Classification of Building Polygons



We have classified RCC, Tin, Tiled and other roof-type today
across 150,000 villages in India

Polygon generation with Vegetation interference: India



Classification of Buildings at High Proximity



Thank you

Prateep@satsure.co