



# SPATIAL COMPUTING AND DIGITAL TWIN ENTERPRISE: EXPANDING SPACE AND GEOSPATIAL INDUSTRY VALUE CHAIN

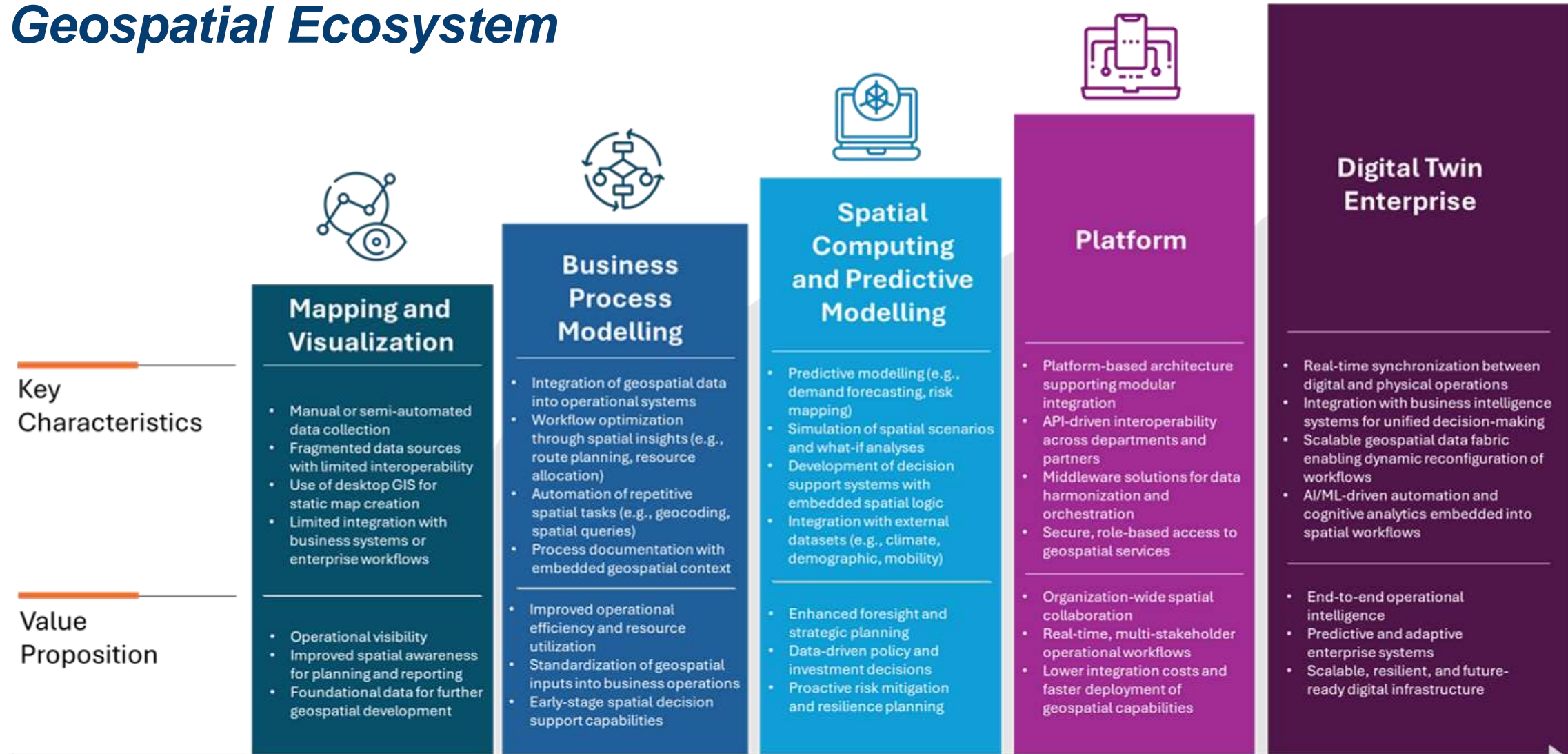
TITAS ROY

INDUSTRY MANAGER – AEC & INFRASTRUCTURE

GEOSPATIAL  
**WORLD**  
ADVANCING KNOWLEDGE FOR SUSTAINABILITY

CXO SUMMIT | 1<sup>ST</sup> DECEMBER |

# Maturity Model of the Future Geospatial Ecosystem

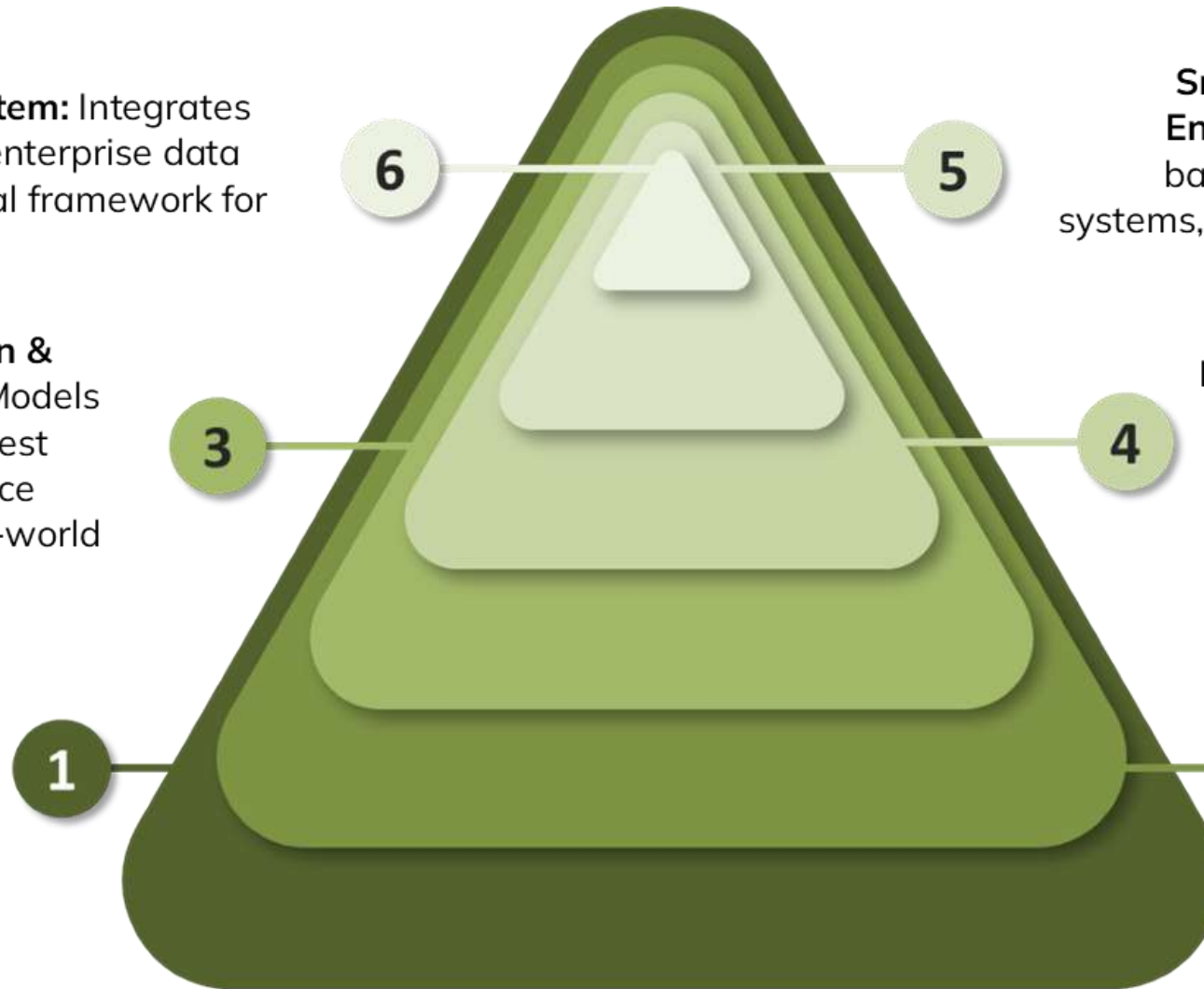


# Why Spatial Computing and Digital Twin Enterprises are Critical to the Future Geospatial Ecosystem?

**Unified Data Ecosystem:** Integrates geospatial, IoT, and enterprise data into a cohesive spatial framework for better insights.

**Advanced Simulation & Scenario Planning:** Models complex systems to test outcomes and enhance resilience before real-world implementation.

**Real-Time Spatial Intelligence:** Enables dynamic, context-aware decision-making through live data integration



**Smart Cities & Infrastructure Enablement:** Forms the digital backbone for managing urban systems, mobility, energy, and public services.

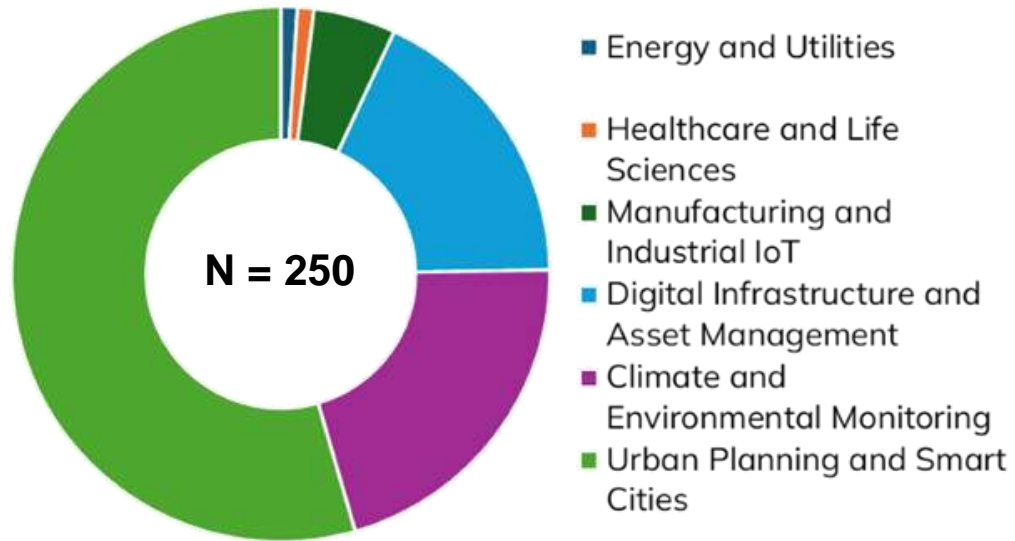
**Immersive User Experience:** Transforms interaction with geospatial data using AR/VR for greater clarity and engagement.

**Digital-Physical Convergence:** Bridges real-world assets and digital environments for continuous monitoring and optimization.

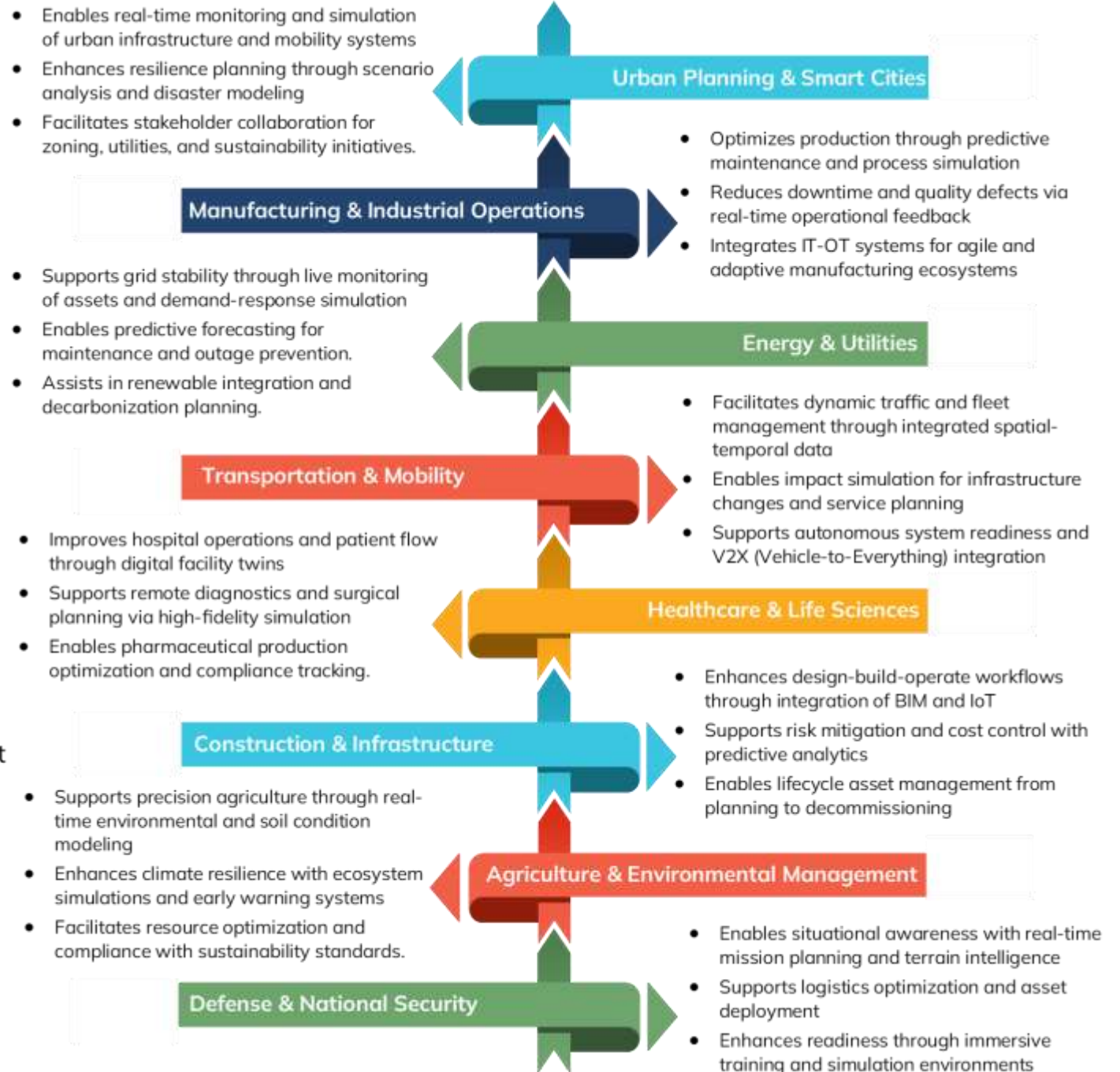
Source : Geospatial World Analysis

# Digital Twin Enterprise in Industry: Transforming Workflows and Sectoral Value

## Sectors experiencing the most transformative impact from Spatial Computing and Digital Twin

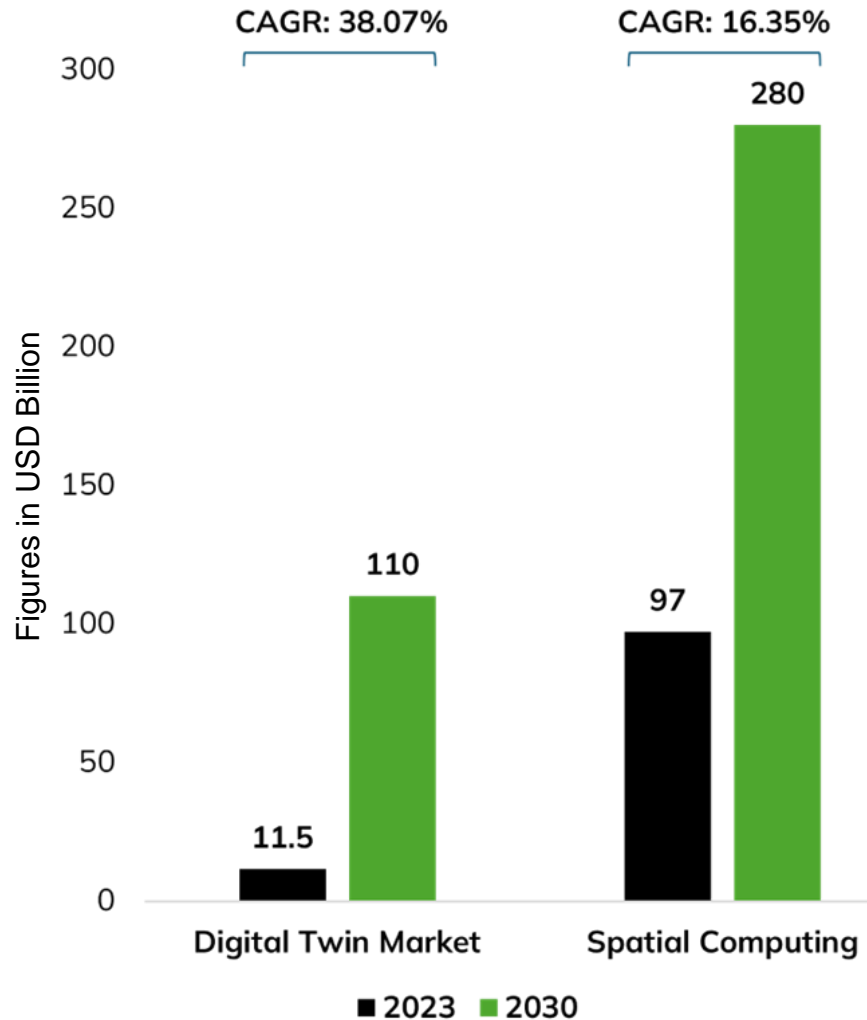


Source : Geospatial World Analysis



# Spatial Computing & Digital Twin Enterprise: Market Outlook

## Market Size and Forecast



## Market Growth Drivers

