



Scaling community-led geospatial climate action in India: Lessons from Meghalaya

MEGHALAYA FACTSHEET



Rich natural resources, but many are **degraded**.

Fertile soils, yet high erosion leaves **1/3 of cultivable land unused**.

Perennial water sources, but villages still **face drying and drinking-water shortages**.

Extreme rainfall contrast: wettest in monsoon, driest in winter due to climate change.

Global biodiversity hotspot, yet biodiversity is rapidly declining.

42% forest cover but continuing to shrink.

MEGHALAYA :FOREST GOVERNANCE - CHALLENGES



90% of Meghalaya's forests are community-managed under customary laws.

State and national laws don't recognize this system.

Customary laws treat forests, lands, and waterbodies as common property managed by the dorbar.

State support for community resource management has been minimal

MEGHALAYA COMMUNITY-LED LANDSCAPE MANAGEMENT (MCLLMP) PROJECT

Meghalaya Community-led Landscape Management (MCLLMP) Project provided support to institutionalize and demonstrate a model for government's support to community-led management and conservation of natural resources with a focus on forests and water sources using geospatial tools.

2018-2024 (USD 60 million / IBRD USD 43 million)



Maps to Action – Empowering Communities using geo spatial applications

Geo Spatial Application

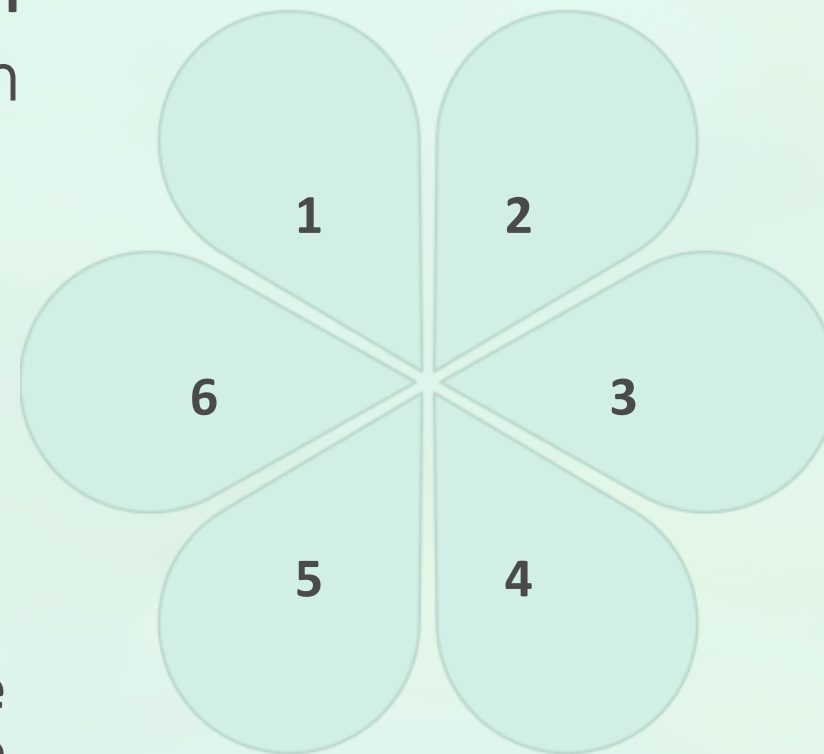
Strengthened community participation

UAV/Drone Application

A full-fledged State UAV and GIS Centre and a certified Drone Training Disaster Damage Assistant and Post Disaster Monitoring

Forest Management Plan for Every Village

76 master trainers and 1,200 VCFs trained on use of tools and GPS for forest enumeration



Springshed Management

50,000+ springs mapped

Offline mobile application Central dashboard, 1500 professionals

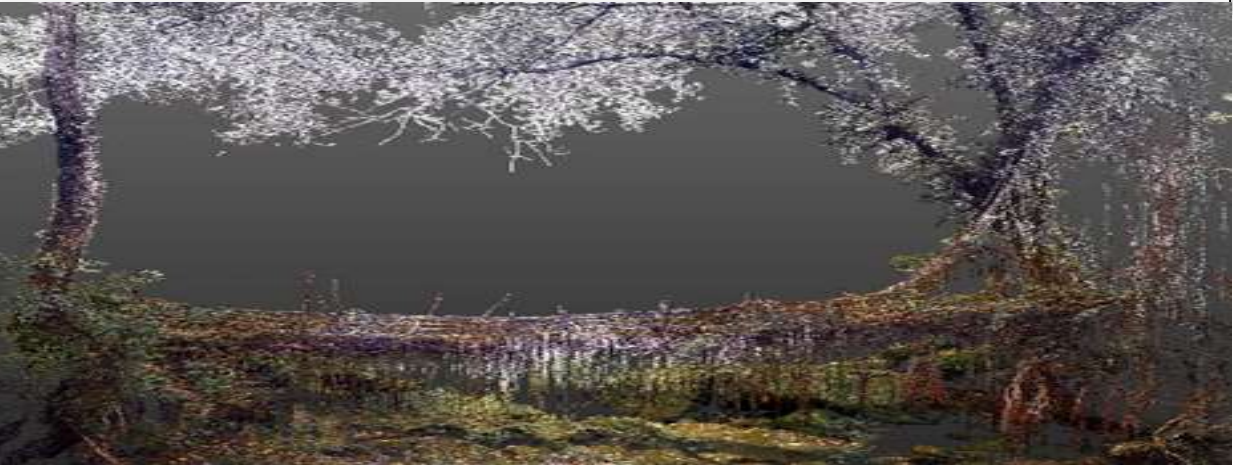
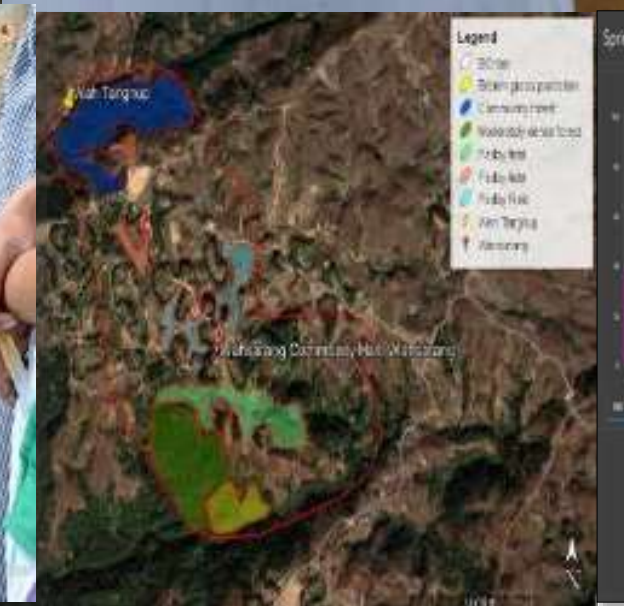
Building a Cadre of Community Community Professionals

14,000 trained village facilitators on geo spatial activities

Land Reclamation Using Medicinal and Aromatic Plants (MAPS)

376+ Ha of land have been reclaimed under MAP cultivation

Community-Led Landscape Approach: Sustainable Landscape in 32289 ha area and 2,21,042 beneficiaries



Project Achievements

Geo Spatial Application

Strengthened community participation

National Program Influence

Influenced the National flagship program, MGNREGS PES implementation

Payment of Ecosystem Service

PES implementation

Community-Led Landscape Approach

Sustainable Landscape in 32289 ha area and 2,21,042 beneficiaries

Women's Participation

Institutionalized women's voice in the traditional tribal society with increased participation of 65749 women in the NRM committees

Living Roots Bridges Initiative

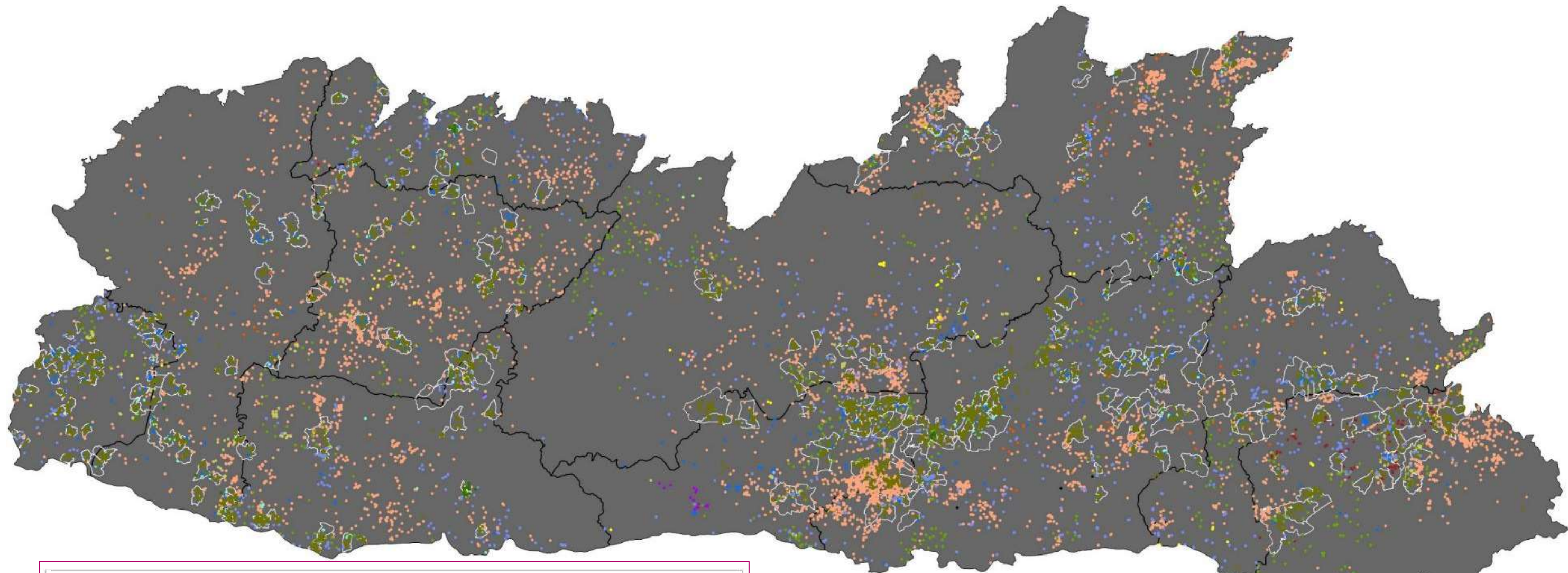
Jingkieng Jri/Living Roots Bridges (LRB) initiative (UNESCO nominated)

Centre of Excellence

A Centre of Excellence for Sustainable NRM and Livelihoods



VISUAL FOOTPRINT | LOCATIONS OF PROJECT INTERVENTIONS



Legend

● CDF	● Land Reclamation	● Sadhana
● CNRMP	● Land Rehabilitation	● NESFAS
● CTF DPMU	● Treatment Mining	● Grassroot
● Seedball	● Bamboo Resource Assessment	● LRB
● CTF SRES	● PES Plots	□ CLLMP Villages
● FMP	● Springs	■ Meghalaya District Boundary

AWARDS AND ACHIEVEMENTS

- **Earth care Award 2023**
- Aminda Simsanggre and Chambagre villages – 2nd and 3rd place in the “**Best Village Panchayat**” category (North East Zone) at the **3rd National Water Awards, 2021**
- Mawkyrdep Village - 3rd place in “**Best Village Panchayat**” Category 2022 at the **4th National Water Awards, 2022**
- **FICCI National Geospatial Award 2023**
- LRB Community members invited to speak at **COP27**
- **Earthcare Award 2023**
- **World Open Innovation 2023, Spain** –
 - GIS and UAV
 - Land reclamation using Aromatic Plants



THANKS



Pyush Dogra

Senior Environmental Specialist

pdogra@worldbank.org

LINKS TO RESOURCES

Project Website	https://www.clmp.com/
Blog	https://www.clmp.com/knowledge-portal/
Spring Dashboard	https://meghalayacmdashboard.in/gisportal/apps/dashboards/e6068bd31c2546659c32f486aa8bb61c
Payment for Ecosystem Services (PES) Dashboard	https://www.mbma.org.in/pes-dashboard/
Centre of Excellence website	https://coenrm.megplanning.gov.in/
Community Nursery Information System	https://coenrm.megplanning.gov.in/clmp/
Trained VCFs portal	https://coenrm.megplanning.gov.in/resources/program-portal/
Video Playlists	https://www.youtube.com/watch?v=Q_b0BJNo8Nc&list=PLA8V33ixfWlts6c3ydlnX5K630AbLs7zf https://www.youtube.com/watch?v=7pgZPzj3LcA&list=PLA8V33ixfWlubGwCC2dipT6dPCnBgXqii