



**GISKernel**  
WHERE MAPS USHER

GISKernel Technologies Inc.

## ABOUT GISKERNEL

GISKernel has grown with a commitment to innovation and excellence, and has successfully completed projects serving various aspects of post disaster recovery activities by leveraging GIS application development, Spatial data analysis and remotely sensed data processing using AI/ML.



### Mission

To empower resilience by solving critical disaster management challenges through cutting-edge geospatial innovation.



### Recognition

Rising Star 2025  
Best Geospatial Startup 2025



### Patented Technology

Patent applied for "A System And A Method For Geolocation Extraction"

# 150+

Successful projects completed

# 25+

Countries served by GISKernel

# 08+

Domains catered to

# 2M+

Covered over **2M+ sq km** across across projects

# 100+


**100+** Custom applications &  
**50+** reports and analytics delivered

# 20+


**20+ Years** of Industry Experience  
Experience



# OUR SERVICES INCLUDE



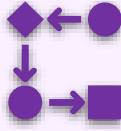
Dashboard development




Spatial Data processing & analysis



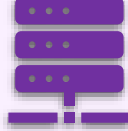
Customisation of widgets



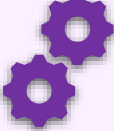
Workflow Optimisation



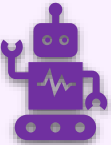
Remotely Sensed Data Processing



Database structuring



Integrations and Implementations




AI/ML Algorithms development



## Capabilities




Feature Extraction




Calculate indices



Spatial Analytics



Report generation



Team collaboration



Manual Identification



Field Safety Risks



Time-Intensive Surveys

# The Disaster Recovery Challenge

Post-disaster marine debris recovery faces critical operational barriers that delay response, endanger teams, and limit effectiveness. These interconnected challenges demand an integrated, intelligent solution.



## Limited Accessibility

Inability to quantify damage in inaccessible or hazardous zones results in incomplete assessments and resource allocation gaps.



## Environmental Coordination

Lack of workflows for environmentally sensitive areas risks regulatory violations and lasting ecological impacts.



## Fragmented Reporting

No unified system for generating clear, quantifiable reports making communication difficult and slows decision-making.



## Complex Technology

Complex tools and fragmented software formats require multiple platforms, limiting adoption and scalability.

# Enhancing Disaster Response

## With SpatioSynth

Automated identification and mapping of debris/damages from EO data.



60x faster processing



Seamless visualization visualization and integration with platforms



Quick insights for faster actions to provide relief



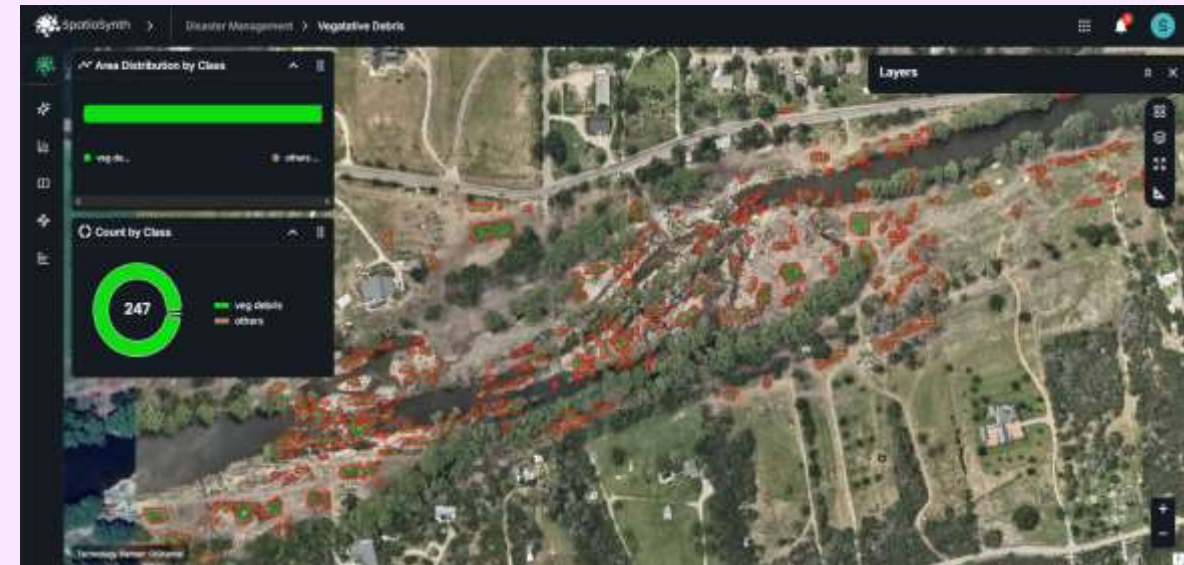
One platform for all processes & formats formats



Resource Planning & action in the Golden Golden Hour



Seamless integration integration with dashboards



# AI Powered Detection And Mapping

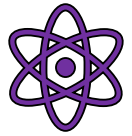


# AI Powered Detection And Mapping

We have developed a **comprehensive, GeoAI-powered dashboard**.

The system automates damage identification, accelerates debris mapping, and ensures safer, faster, and more accurate recovery operations.

## Our dashboard enables:



### Automated AI-driven detection

- Of debris, damages, and blocked waterways—eliminating slow, manual identification.



### Remote assessment of hazardous or inaccessible zones

- Reducing risk for on-ground teams.



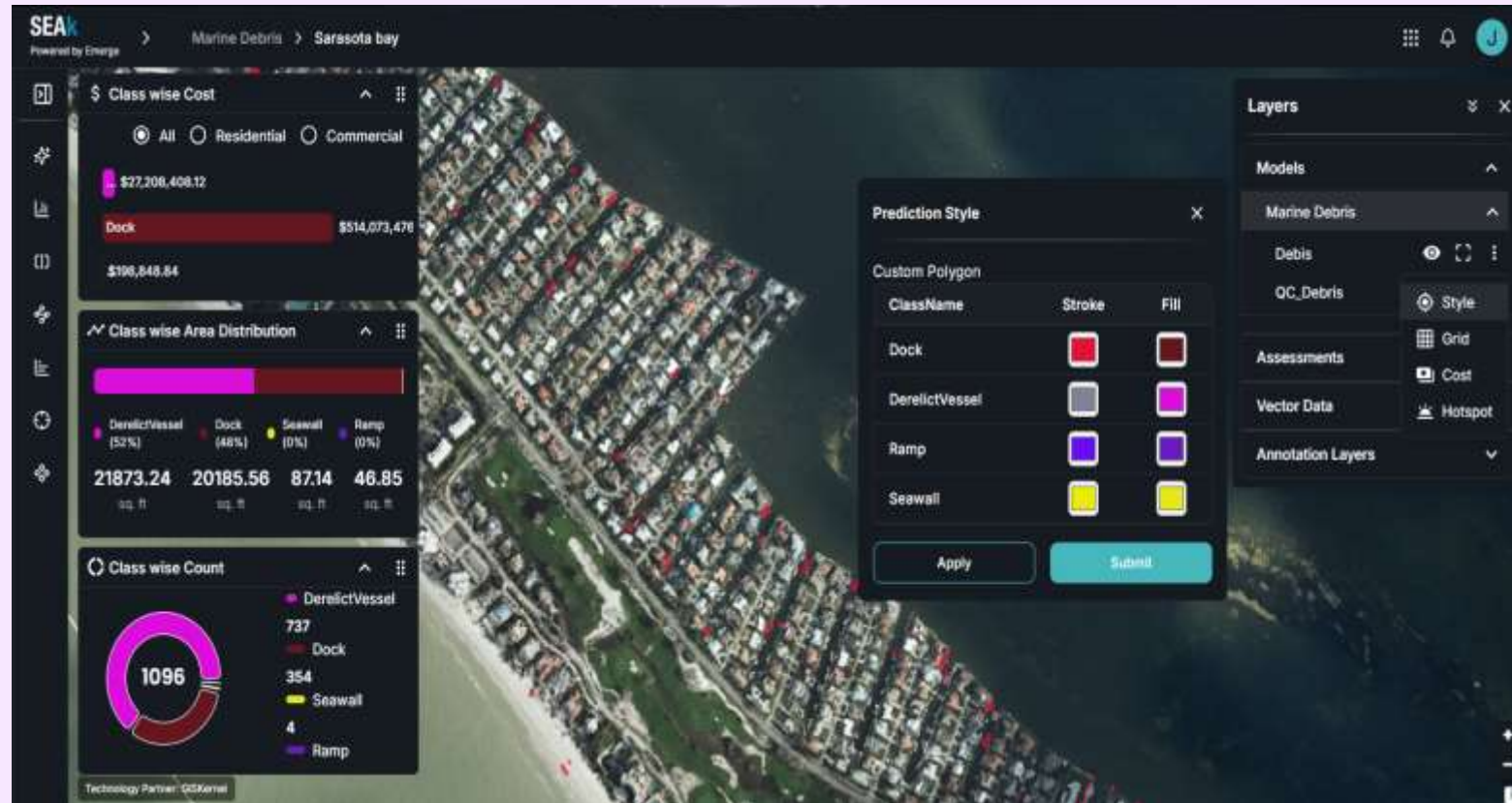
### Rapid large-area analysis,

- Allowing teams to prioritize critical locations within minutes, not days.



### Quantifiable damage insights

- Through integrated satellite, aerial, and field-collected data, with calculated costs.



# Environmental Compliance



## Environment-aware workflows

- Enabling teams to manage sensitive and regulated zones with precision.



## Centralized reporting and analytics

- Generating clear, shareable statistics for all stakeholders in one place.



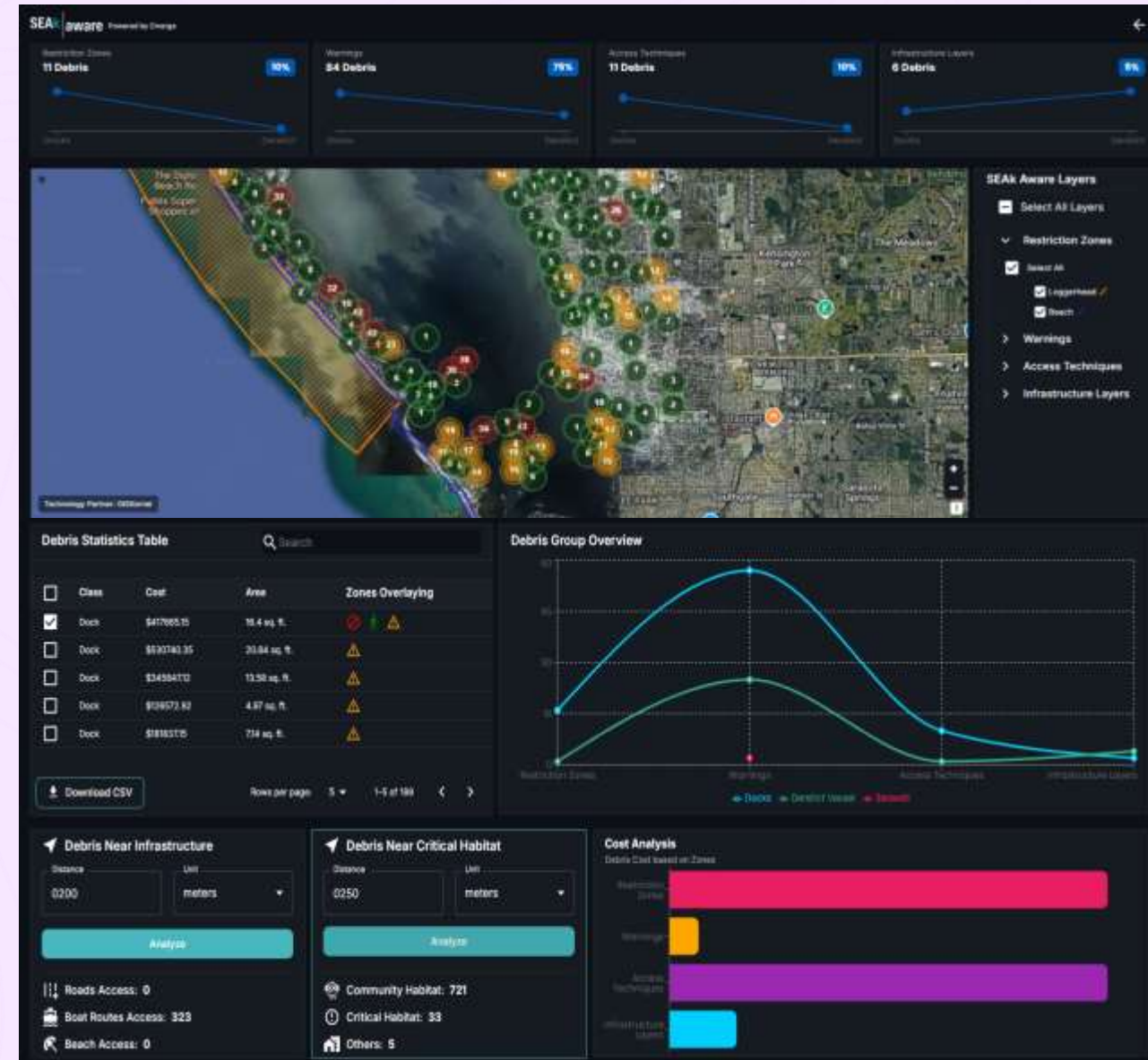
## A single unified platform

- That supports all spatial data formats and replaces the need for multiple software tools.



## Easy-to-use, field-ready workflows

- Allowing teams to perform advanced analytics without GIS or technical expertise.



This GeoAI dashboard brings **speed, safety, and intelligence** to disaster recovery—turning overwhelming data into coordinated, actionable operations across the entire marine debris lifecycle.

# Thank you!

## Get in touch!



+91 94047 97779



akshay@giskernel.com



[www.giskernel.com](http://www.giskernel.com)  
[www.spatiosynth.com](http://www.spatiosynth.com)

