

INTELLIGENCE CAPABILITIES OF TOMORROW. DELIVERED TODAY.

Indo-Pacific Geointelligence Forum 2026

The New Paradigm: AI-First Defense Capabilities

Nations that embed software and AI at the core of their defense architecture will command the next era of operational superiority.

With over 13 years of experience serving defense and govt. sectors, we proudly support a diverse portfolio of 200+ clients worldwide

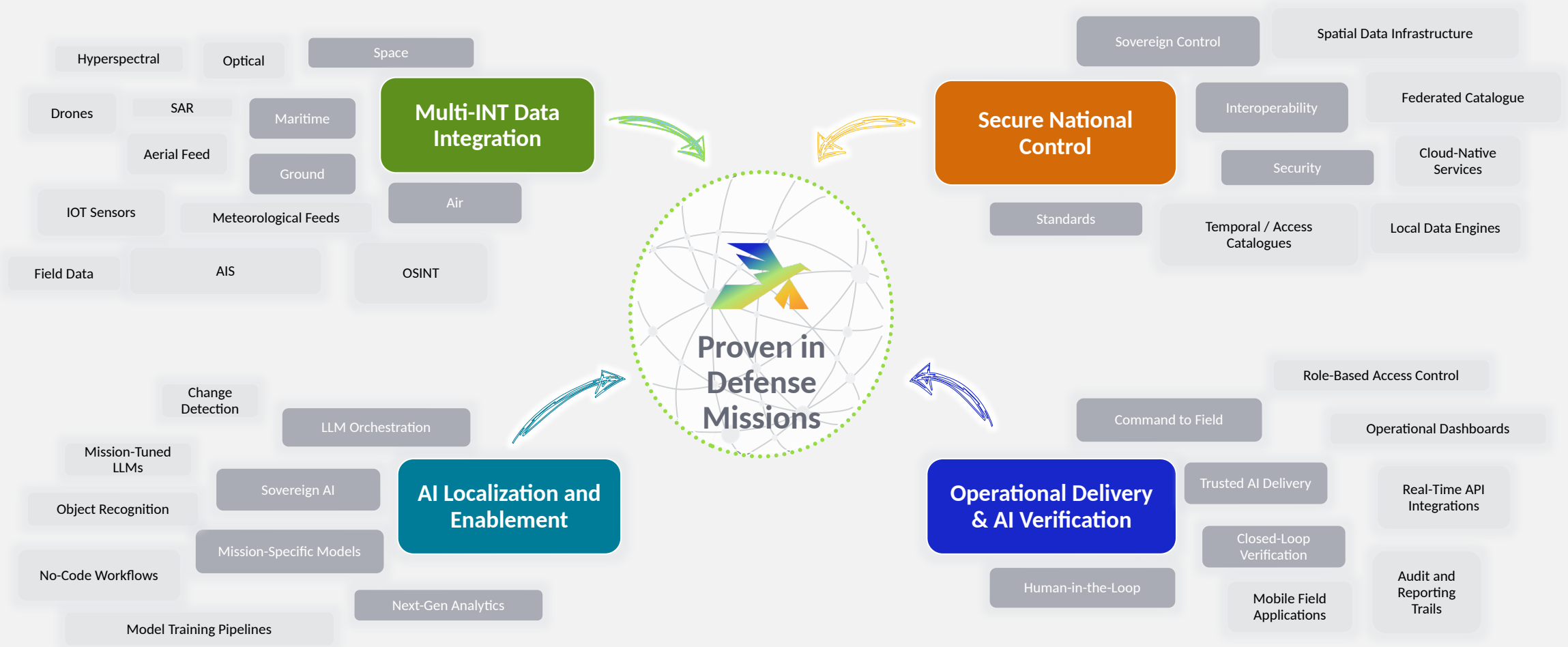
Clientele



and many more...

Proven operating system for intelligence workflows - empowering nations to connect infrastructure, hardware, and software into one fabric

13+ years of innovation in intelligence integration and defense-grade delivery



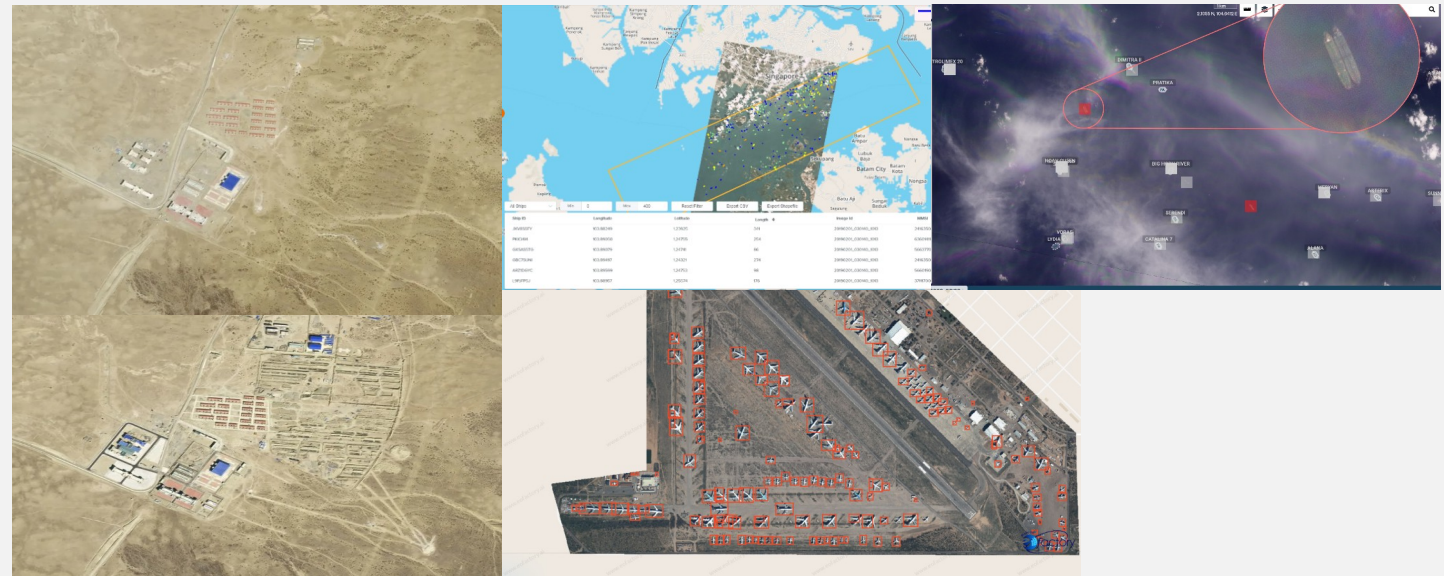
Empowering defense forces with end-to-end situational intelligence and sovereign AI control

Aetosky unifies every layer of mission intelligence

1

Strategic Intelligence & Domain Awareness

- **Multi-INT Fusion:** Integrate satellite, UAV, AIS, and ground intelligence into a common operational picture.
- **Change Detection & Object Recognition:** Automated detection of vehicles, assets, and infrastructure evolution.
- **Maritime Domain Awareness (MDA):** Vessel tracking, oil spill detection, and dark-ship analytics through AIS fusion.
- **Border & Airspace Monitoring:** Intrusion detection, pattern-of-life analysis, and cross-border movement alerts.
- **Mission Area Mapping:** High-resolution terrain intelligence (TERINT), 3D extraction, etc.



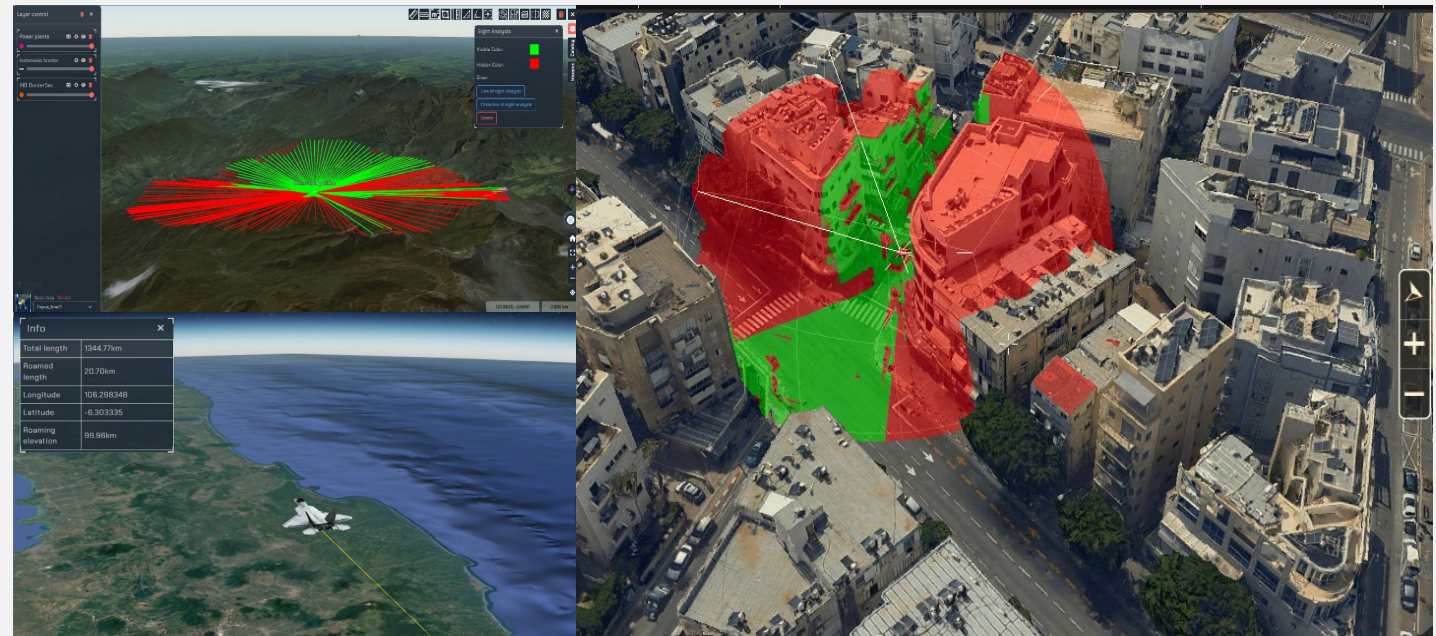
Empowering defense forces with end-to-end situational intelligence and sovereign AI control

Aetosky unifies every layer of mission intelligence

2

Operational Planning & Mission Support

- **Pre-Mission Intelligence Preparation:** data. Identify landing zones, evacuation routes, and safe corridors using multi-source
- **Force Mobility & Terrain Analytics:** Line-of-sight, slope, and surface analysis for mobility and logistics operations.
- **Target Area Analysis:** Identify and monitor potential threat zones, infrastructure, and choke points.
- **Live Field-HQ Synchronization:** Real-time tasking, annotation, and updates.



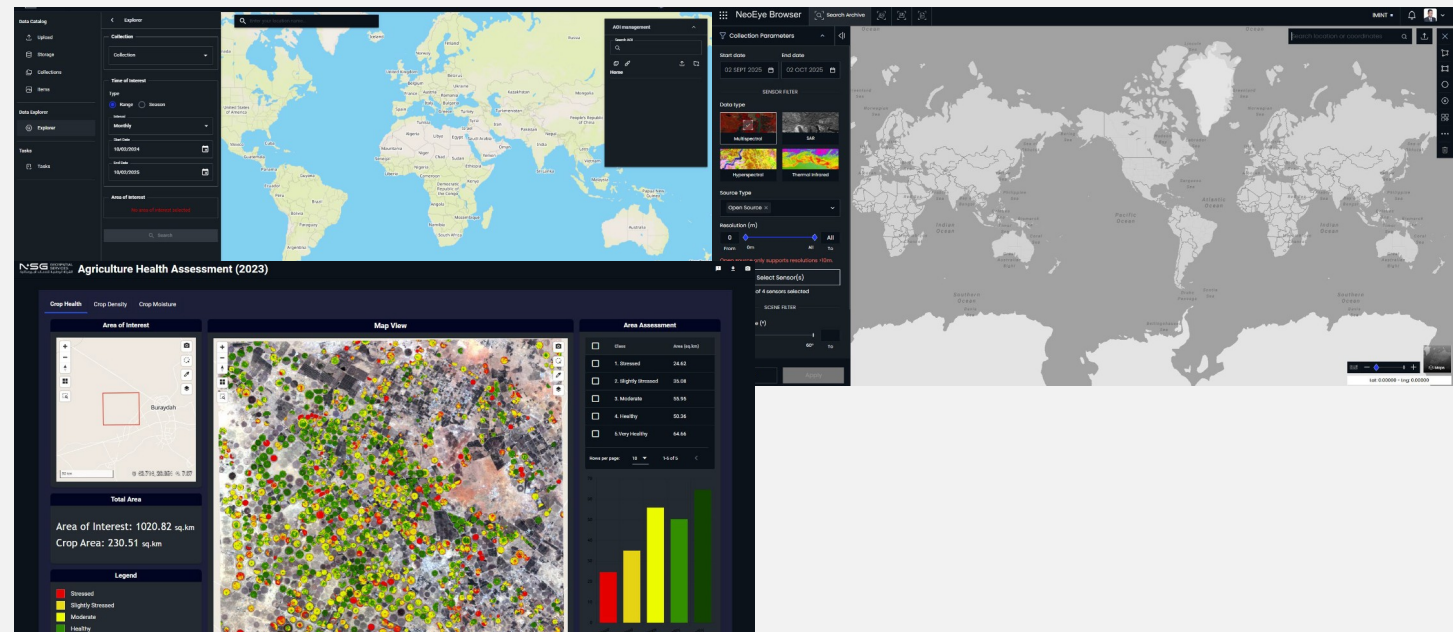
Empowering defense forces with end-to-end situational intelligence and sovereign AI control

Aetosky unifies every layer of mission intelligence

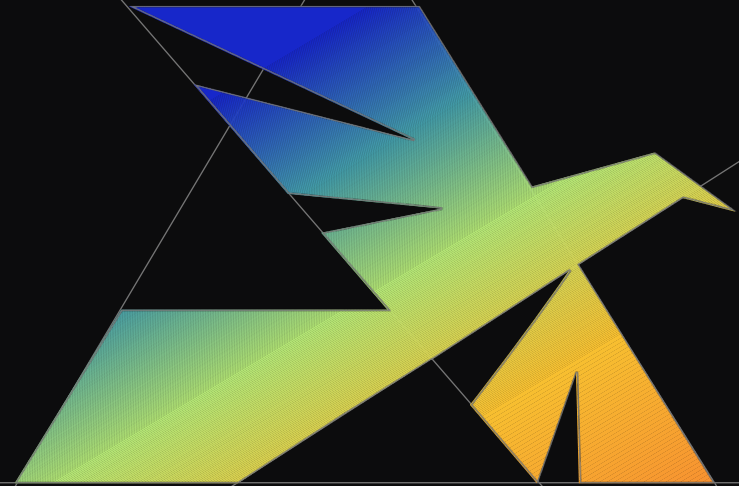
3

Data Sovereignty & AI Enablement

- **Sovereign GEOINT Infrastructure:** Deployable systems ensuring all data and AI pipelines remain within national boundaries.
- **AI Model Training & Reinforcement:** Build and fine-tune mission-specific detection and classification models using Aetos AI.
- **Automated Pre-Processing Pipelines:** On-prem ARD generation and ingestion pipelines



Successes

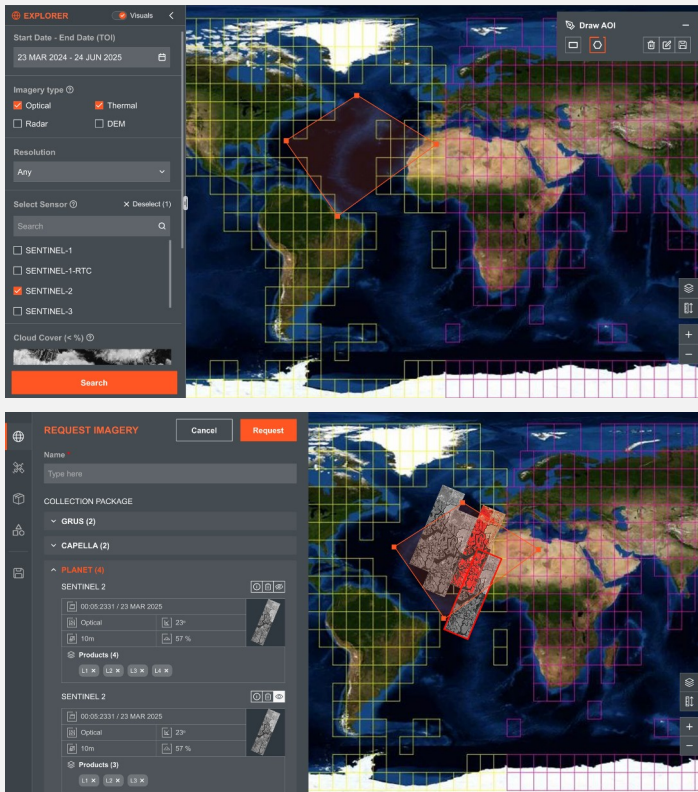


Delivered a full-scale imagery portal powering tasking, collection, processing, exploitation, and dissemination

Building a Multi-Sensor Imagery Portal for Prime Defense Contractor

Confidential Client

Previous Experience



Operational Impact

- **Sovereign-Ready Platform** – Enabled independent operation without reliance on external vendors.
- **Mission Alignment** – Streamlined intelligence workflows: tasking, ordering, ingestion, dissemination.
- **Operational Autonomy** – Trained in-house teams to run, extend, and sustain the platform independently.
- **Global Marketability** – Delivered a system positioned for worldwide commercialization by the contractor.

Technical Capabilities

- **End-to-End Workflows** – Tasking, archive retrieval, catalog federation, product generation.
- **Interoperability Layer** – Standards-based APIs (STAC, OGC) for seamless integration with mission systems.
- **Multi-Sensor Ingestion** – Automated pipelines for optical & SAR data with metadata normalization.
- **Scalable Infrastructure** – Designed for high-volume ingestion (10M+ images, 10PB+ storage).

Key Deliverables

- **Operational Portal** – Fully functional web-based application with multi-lingual UI.
- **API Suite** – Comprehensive, documented APIs enabling integration with external systems.
- **Federated Catalog** – Unified discovery across national, commercial, and partner datasets.
- **Deployment & Handover** – Transitioned from vendor-hosted demo to contractor-controlled environment.

End-to-end integration of tasking, data ingestion, AI analytics, and mission delivery - creating a single operational environment for agencies

Building a fully automated sovereign defense intelligence ecosystem

Confidential Client

Previous Experience



Operational Impact

- **AI-Driven Decision Advantage** – Empowers analysts and commanders with automated insights and predictive models.
- **Future-Ready Foundation** – Scalable to integrate new sensors, data sources, and mission modules as capabilities evolve.
- **National Intelligence Enablement** – Establishes a unified data and analytics platform across defense, intelligence, and civil agencies
- **Strategic Autonomy** – Enables full control of data, models, and infrastructure within national boundaries

Technical Capabilities

- **Unified Data Vault** – Centralized storage, cataloging, and retrieval for multi-INT data (IMINT, SIGINT, OSINT, AIS).
- **Automated Ingestion Pipelines** – Continuous data flow from satellites, UAVs, sensors, and field apps into structured repositories.
- **AI & Advanced Analytics** – ML-driven tagging, pattern detection, and anomaly identification across large temporal datasets.

Key Deliverables

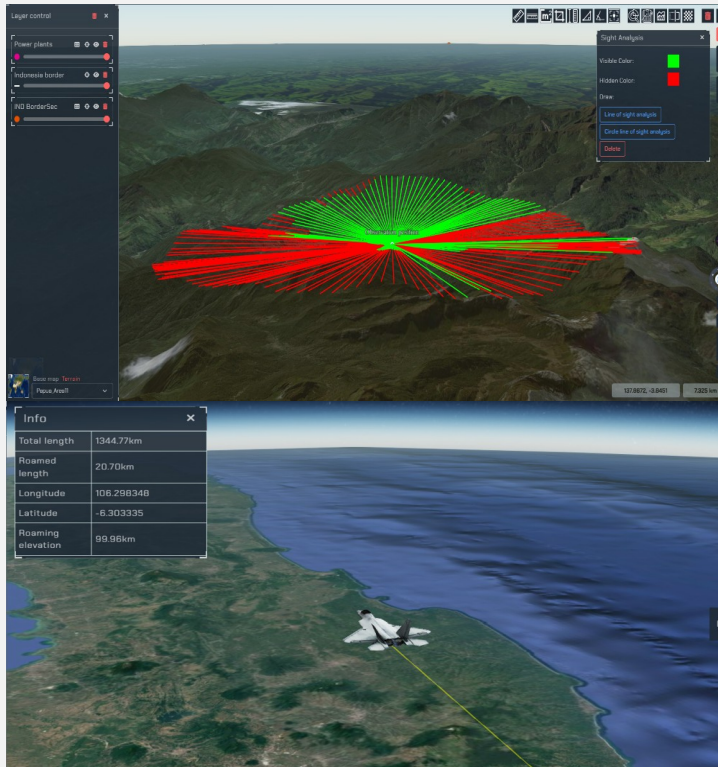
- **Sovereign Intelligence Platform** – End-to-end ecosystem for national intelligence collection, processing, and distribution.
- **Analytic Dashboards** – Real-time visualization tools for mission insights, event tracking, and predictive alerts.
- **Operational Handover** – Full technology transfer with training and documentation ensuring self-reliant operation.

Delivering national-scale 3D modelling, analytics, and simulation - seamlessly integrated into sovereign GEOINT environments

Integrated Terrain Intelligence for Mission-Grade Planning, Analysis & Simulation

Confidential Client

Previous Experience



Operational Impact

- **Vertical & Temporal Awareness:** Adds the third dimension to intelligence workflows, enabling elevation-based planning, LOS analysis, and change detection over time.
- **Mission Readiness:** Supports rapid planning, secure operations, and disaster response with realistic terrain models.
- **Sovereign Control:** All data, AI models, and infrastructure remain within national boundaries.

Technical Capabilities

- **3D Data Generation:** From stereo satellite imagery, LiDAR, SAR, and drone sources.
- **Advanced Terrain Analytics:** Line-of-sight, slope, inundation, contour, and distance analysis.
- **Semantic 3D City Modelling:** Urban data with building attributes for planning.
- **LLM-Powered Interface:** Natural language commands for complex geospatial tasks.
- **Multi-Source Ingestion** - Sensor-agnostic pipelines for DSM, DTM, and temporal

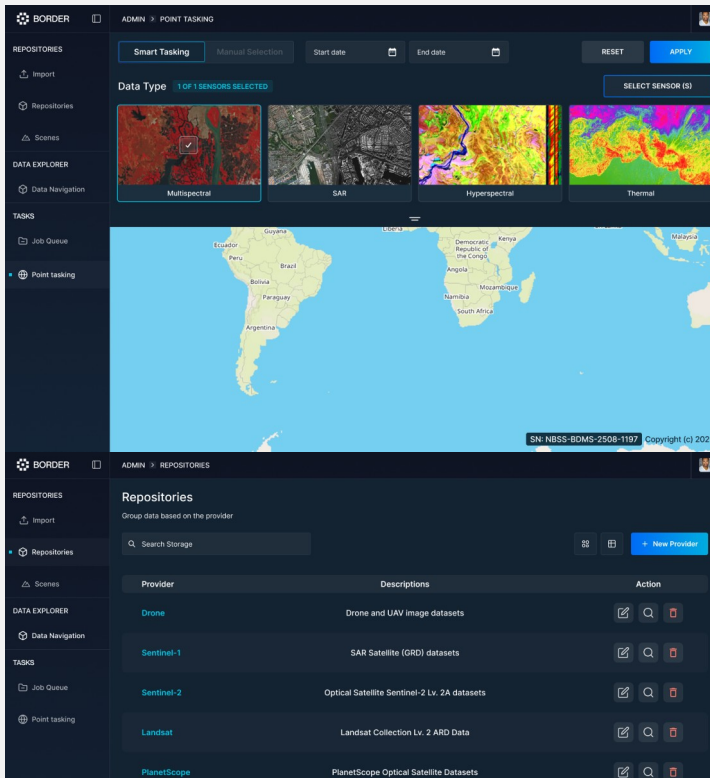
Key Deliverables

- Interactive 3D visualisation and analytics platform.
- **Integrated Simulation Tools:** Flythroughs, landing zone analysis, and route planning.
- **AI-Powered Change Detection:** Automated detection of height/volume changes.
- **Data Integration into Cube:** Unified catalogue for 2D and 3D intelligence layers.
- Sub-metre to 5-metre resolution for all priority areas.

A unified platform integrating multi-sensors - CCTV, drones, and satellites - into a mission-ready intelligence backbone

Building Country's Border Intelligence Data Vault

Confidential Client



Operational Impact

- **National Security Enablement** – Strengthened border monitoring and surveillance with a single intelligence framework.
- **Real-Time Situational Awareness** – Linked multi-source feeds into a live operational picture.
- **Decision Superiority** – Enabled faster response to incursions, smuggling, and cross-border risks.
- **Scalable Foundation** – Designed to support future integration of additional sensors and mission systems.

Technical Capabilities

- **Data Vault Architecture** – Centralized storage, indexing, and retrieval for multi-INT data.
- **Sensor Fusion** – Combined inputs from CCTV, drones, and satellites into structured, searchable datasets.
- **Advanced Analytics** – Metadata tagging, automated ingestion, and AI-enabled event detection.
- **Interoperability Layer** – API-first design for integration with defense, law enforcement, and intelligence systems.

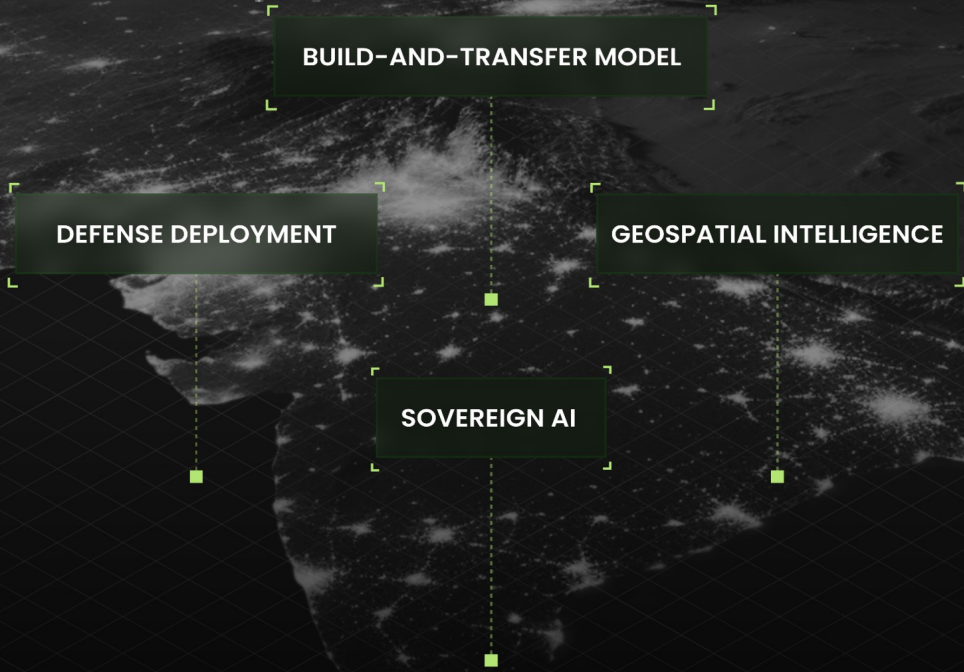
Key Deliverables

- **Border Monitoring Dashboard** – Single operational interface for monitoring events across land borders.
- **Ingestion Pipelines** – Automated workflows to process video, imagery, and sensor metadata in real time.
- **Operational Handover** – Training and deployment support to ensure sovereign control and independence.



SOVEREIGN DEFENCE INTELLIGENCE CAPABILITY

MADE IN INDIA, MADE FOR INDIA



Supporting **Atmanirbhar Bharat** through Sovereign AI and Geospatial Capabilities for secure Indian Defence networks

BUILD FOR SOVEREIGN INTELLIGENCE

SYSTEMS FOR GOVERNMENTS

-  Decisions Are Not Dependent On Foreign Platforms
-  Governments Retain Full Control Over Their Data
-  AI Systems Operate Under National Authority
-  Systems Continue To Function In Sensitive Situations



Get in Touch

 solutions@aetosky.com

 +91 9818045329

 www.aetosky.com

Thank You!