

The background of the slide is a dark space scene. A bright blue arc representing the Earth's horizon curves across the lower half of the image. Below the horizon, the Earth's surface is visible, showing dark blue oceans and patches of yellow and white landmasses. A bright blue point of light, representing a satellite, is positioned on the horizon. From this point, several thin white lines radiate outwards, and a wider, semi-transparent blue cone of light extends downwards towards the Earth's surface, suggesting a satellite's field of view or data transmission.

pixxel

SEEING THE UNSEEN

PIXXEL IS BUILDING THE WORLD'S HIGHEST RESOLUTION HYPER SPECTRAL SATELLITE CONSTELLATION



**WIDELY
ACCESSIBLE**

Lowest pricing
in the market



**DAILY
REFRESH**

Image the world
every 24 hours



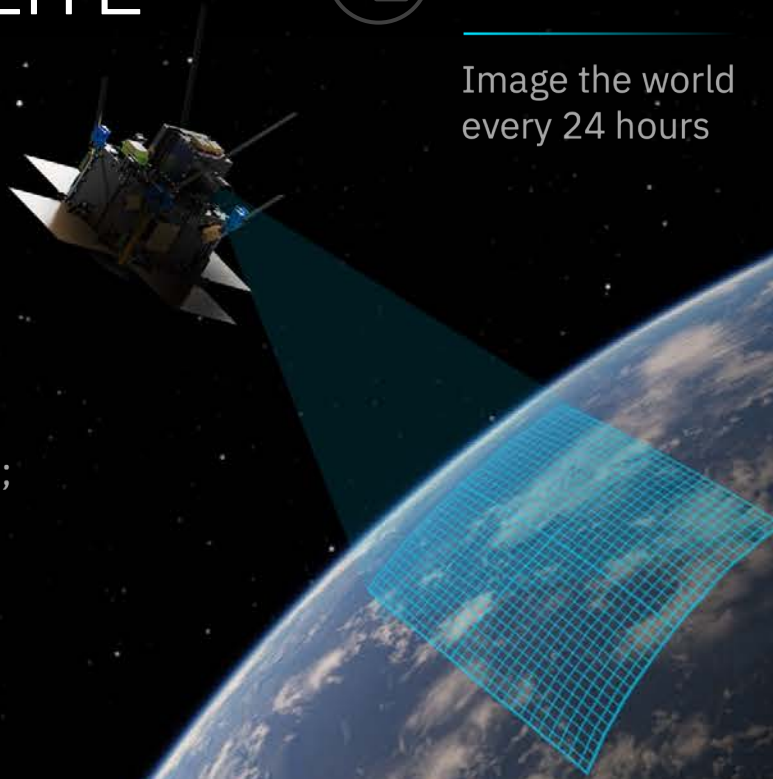
**UNPRECEDENTED
5M RESOLUTION**

5 meters; 400+ bands;
50x more information



**GLOBAL
COVERAGE**

Access to every part
of the planet



50x MORE INFORMATION THAN OTHER TYPES OF IMAGERY

HYPERSPECTRAL DATA
shows clearly how the lake is contaminated
with poisonous chemicals, which existing
satellite data is not able to detect.



Hyperspectral

Hyperspectral is information in **100s of wavelengths** or bands, going beyond the visible spectrum into infrared.



Multispectral

Multispectral is information in **10-20 wavelengths** or bands across the visible and infrared range.



RGB

RGB is information in **three broad visible wavelengths** or bands.



APPLICATIONS IN DEFENCE



Camouflaged Targets

Distinguish between real, camouflaged and decoy targets



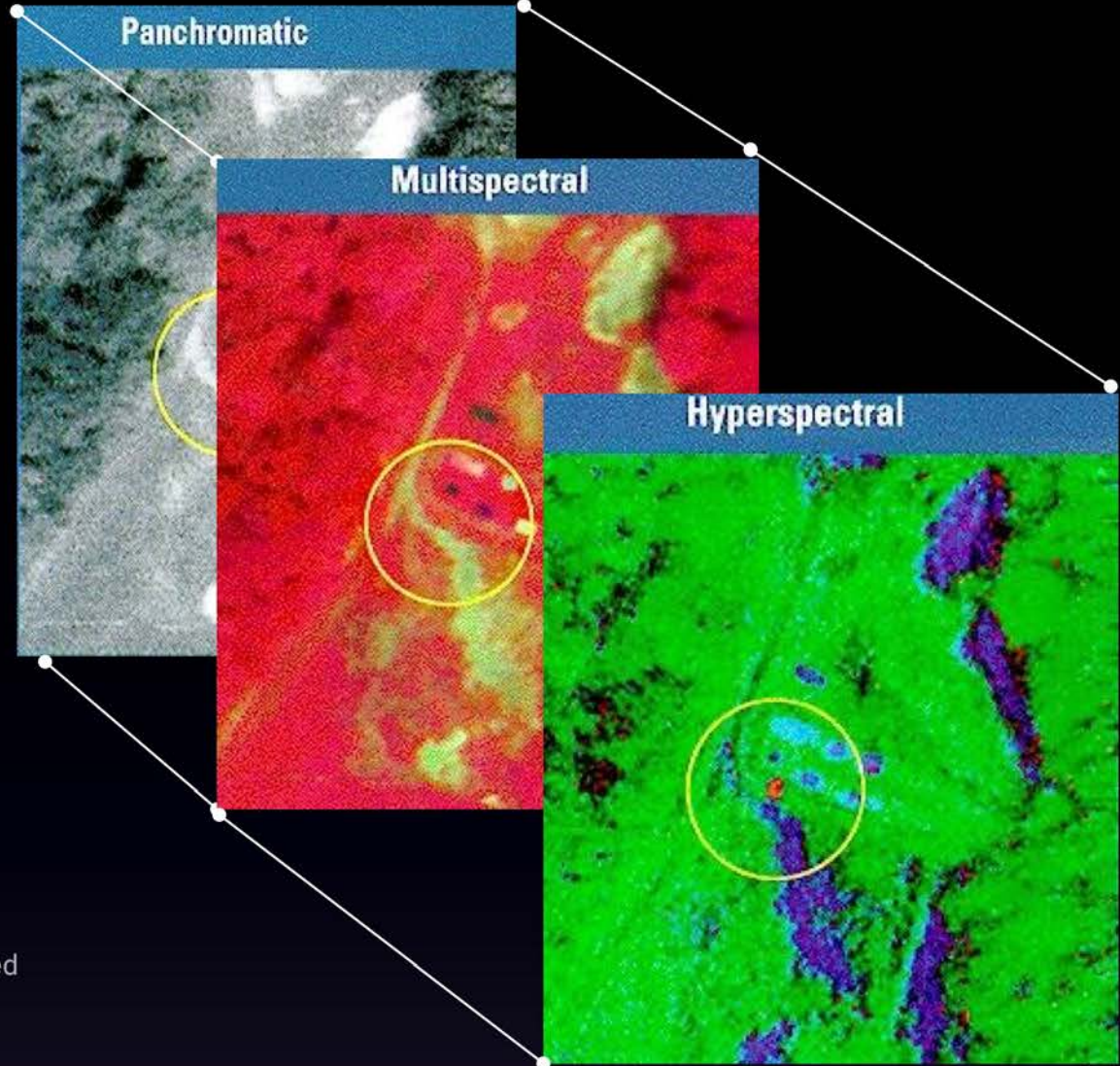
Chemical & Biological Threats

To detect byproducts from the manufacturing of chemicals



Soil Disturbance Detection

To identify possible cross-border tunnelling and buried landmines



ALL POTENTIAL USE CASES FROM PIXXEL'S HYPERPECTRA DATA

- Monitoring military camps at border areas
- Monitoring new construction activity
 - Dirt roads and permanent roads
 - Camouflage tents
 - Military camps and bunkers
 - Permanent infrastructure
 - Helipads
- Monitoring movement
 - Movement of military trucks
 - Movement of equipment, artillery, etc.
- Identification of explosives and artillery (landmines, tanks etc.)
- Monitoring other base camps
 - Military base camps
 - Airbase camps
 - Naval base camps
- Monitoring training activities
 - Military fighter jets
 - Object identification fo tank types, other artillery
 - Identification of soil and vegetation changes

PIXXEL'S SATELLITE IS ALREADY TESTED AND VALIDATED IN SPACE



INTEGRATION of camera into satellite

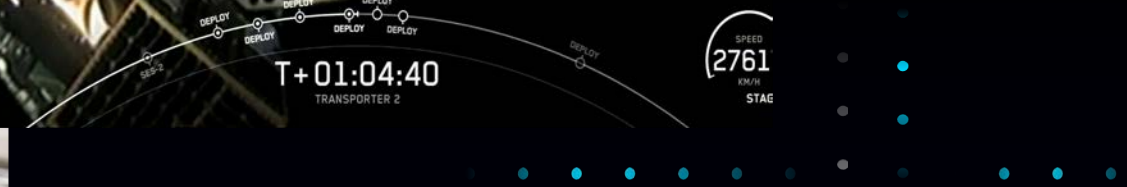


DEPLOYMENT from Falcon 9

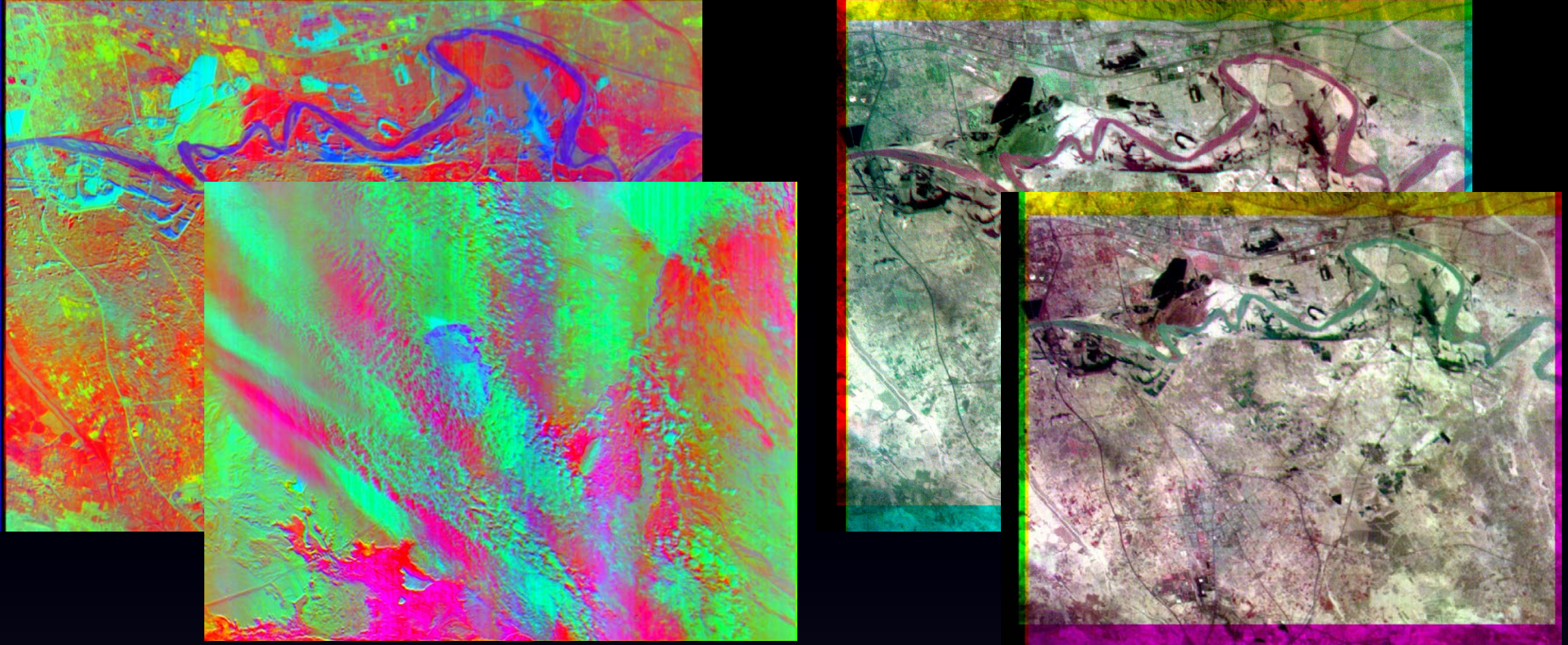


FIRST LAUNCH 10M CAMERA

April 2022 on the SpaceX
Transporter Mission



WE ARE ALREADY BEAMING DOWN IMAGES FROM SPACE



Sample data beamed down from Pixxel's satellites



Making satellite imagery actionable
by seeing the unseen.

awais@pixxel.space

722, CMH Road
INDIRANAGAR, BANGALORE, INDIA - 560 038