



Geospatial Approach to Modern Cybersecurity Threats

by

Lt General Rajesh Pant

PVSM, AVSM, VSM(Retd) PhD

National Cyber Security Coordinator

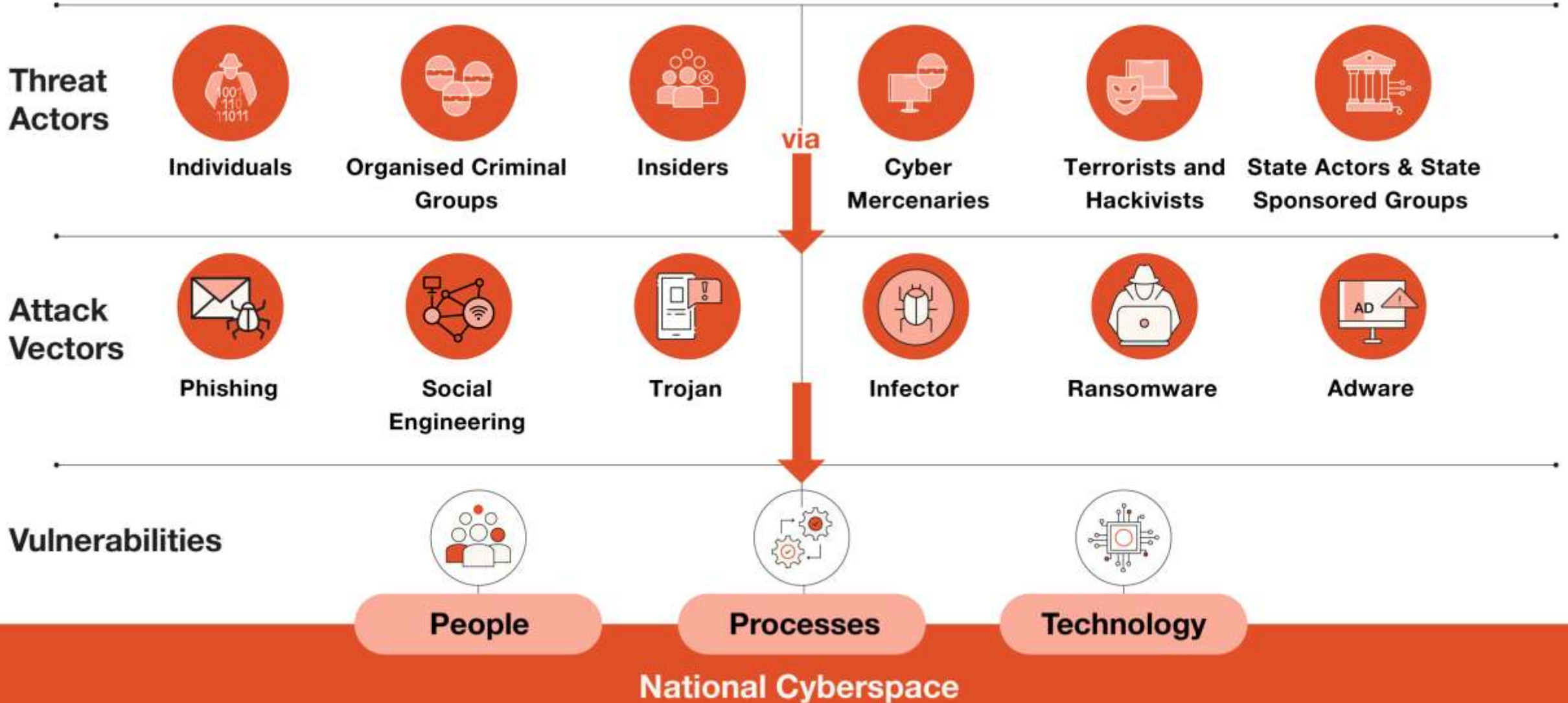
14 Jun 2022

*I dream of a Digital India where Cyber Security
becomes an integral part of National Security*

~ Prime Minister Shri Narendra Modi



Modern Cyber Security Threats



Why Geospatial Approach ?



- To tackle Cyber Security threats, various frameworks exist (COBIT, ISO, NIST, ENISA, etc)
- Frameworks provide:-
 - What
 - Who
 - Why
 - How
- What's Missing
 - Where
 - When

Advantages of Geospatial Approach

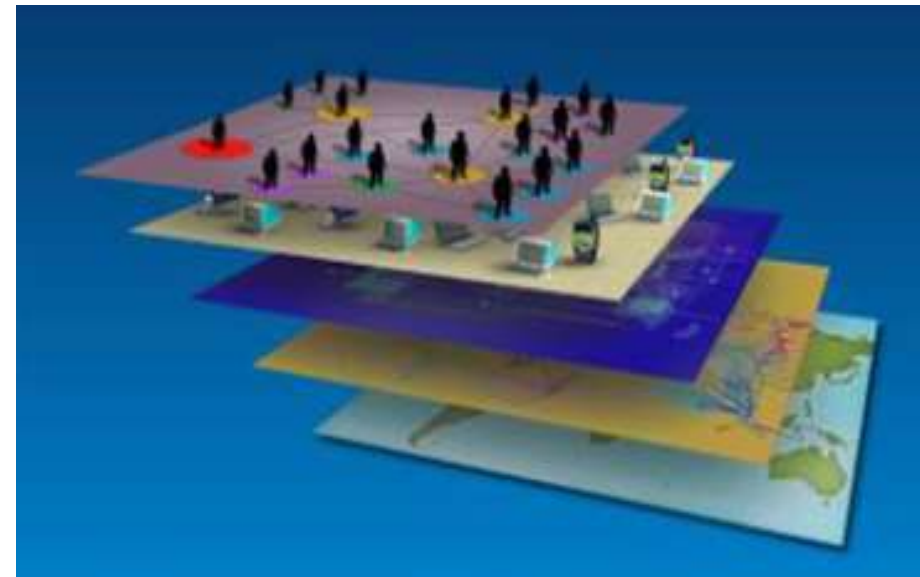


- Quick discovery, analysis and prioritization of Cyber Threats
- Organization wide agility
- Birds Eye View & Spatial Analytics
- Creates comprehensive model integrating all available data
- Use AI & ML on top of this
- Extensive use in Smart City Deployments

Cyberspace Reconsidered



- Each device in Cyberspace is owned by someone (no 'global commons')
- Electromechanical devices exist in space-time and interact with physical events
- Geography is required to integrate and align cyberspace with other data



Social/Persona Layer

Device Layer

Logical Network Layer

Physical Network Layer

Geographic Layer

Source - ESRI Whitepaper Jun 2015

Panel Discussion