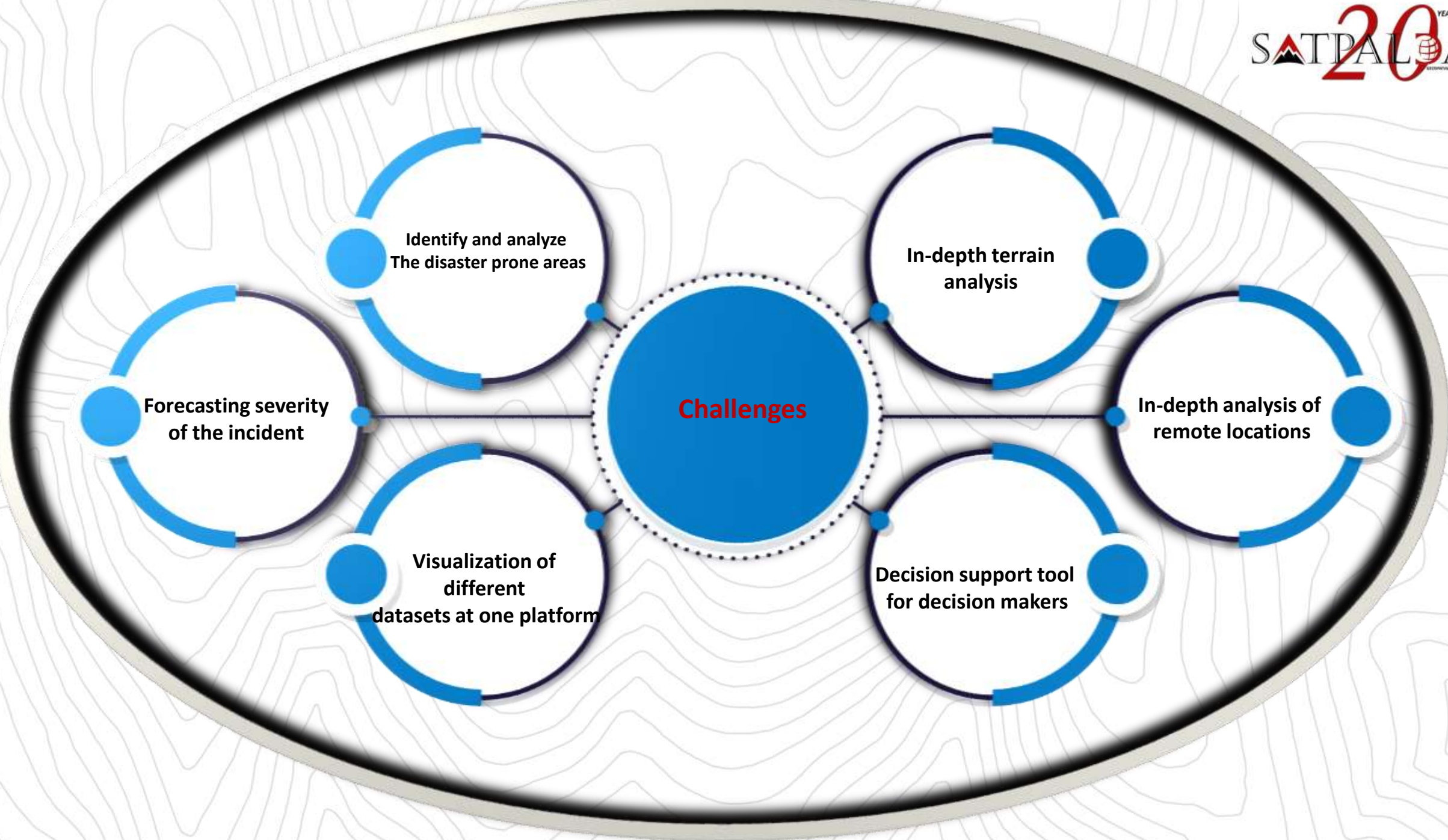


**GIS for Disaster  
Mitigation &  
Emergency  
Response**





Identify and analyze  
The disaster prone areas

In-depth terrain  
analysis

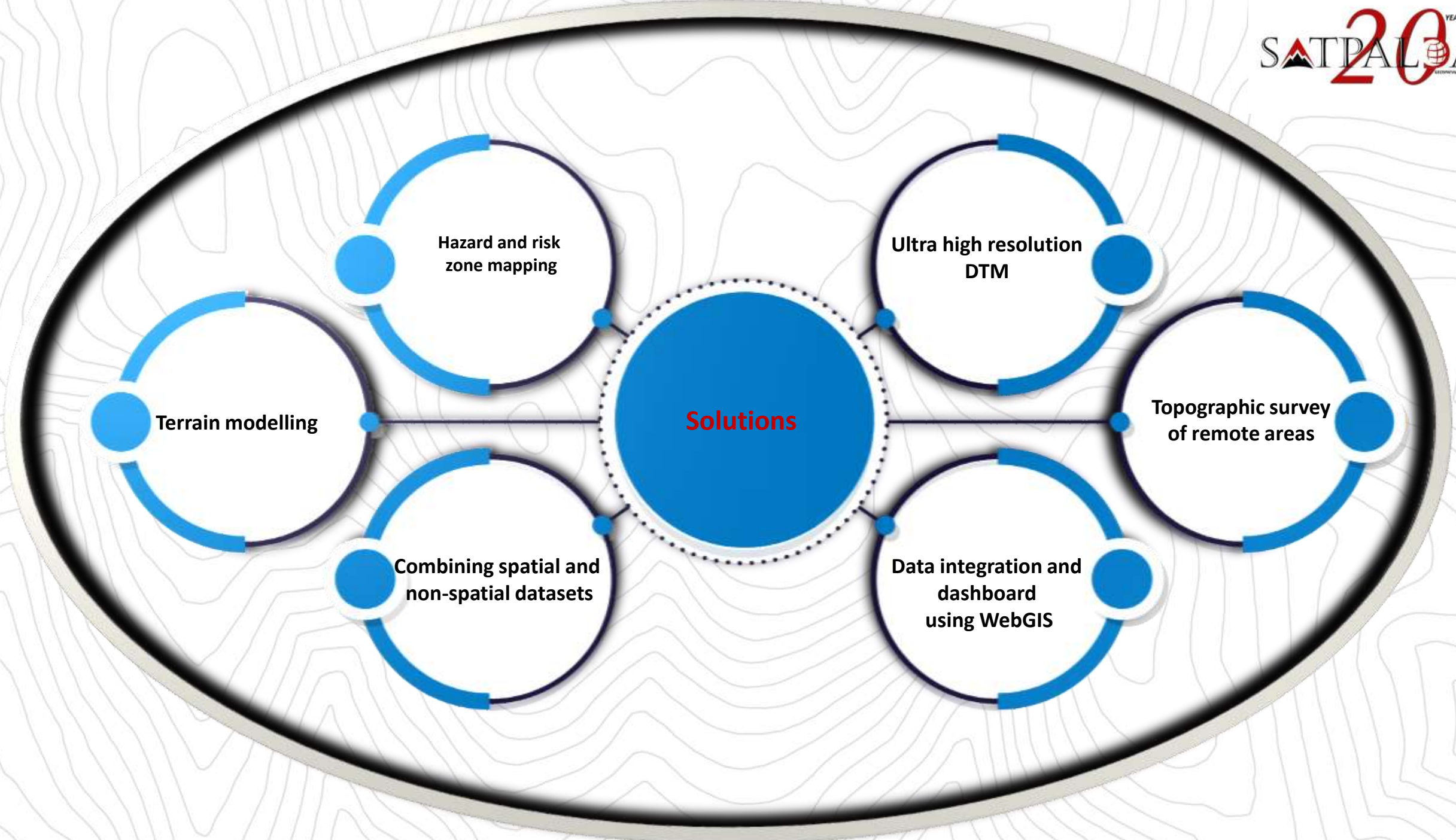
In-depth analysis of  
remote locations

**Challenges**

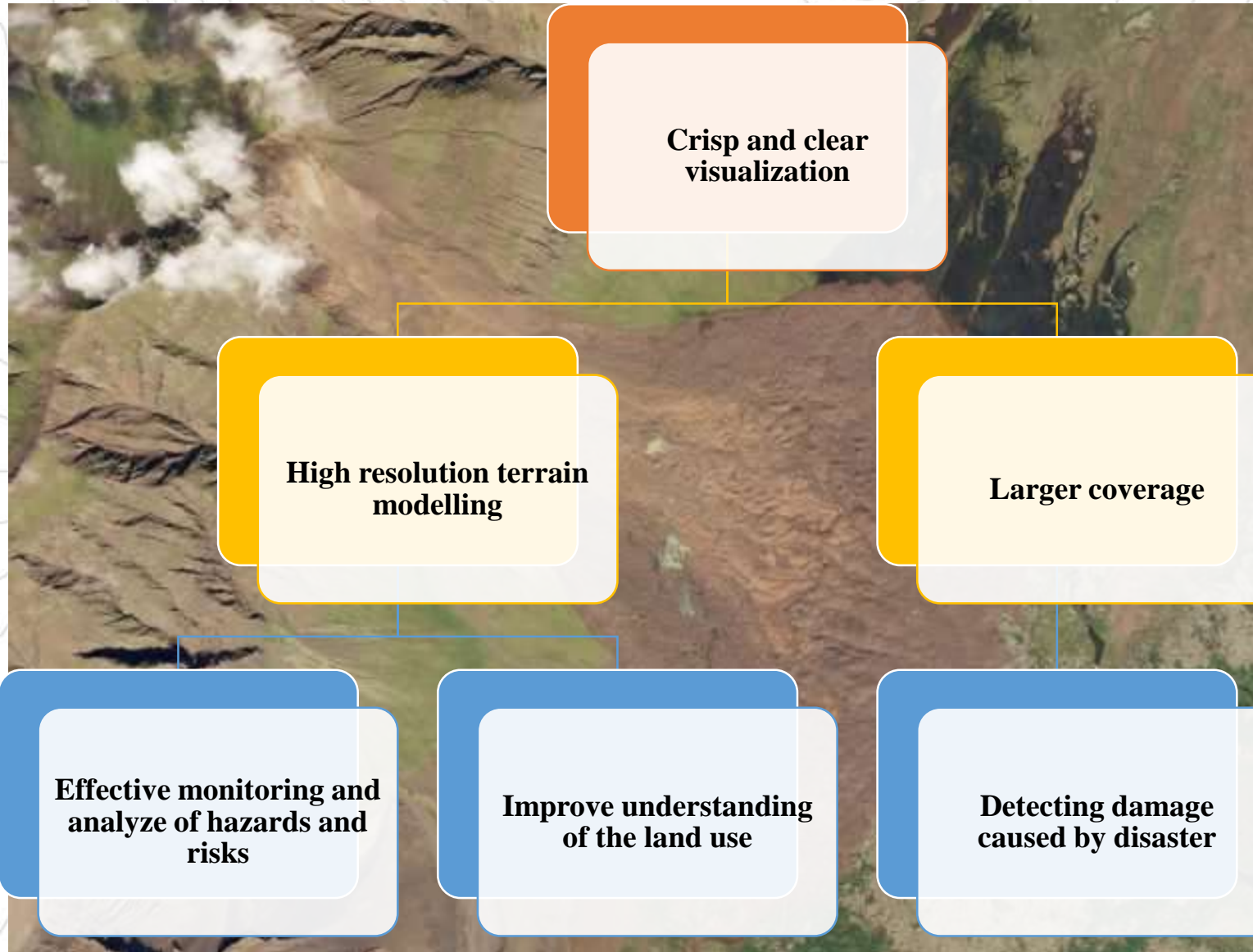
Decision support tool  
for decision makers

Visualization of  
different  
datasets at one platform

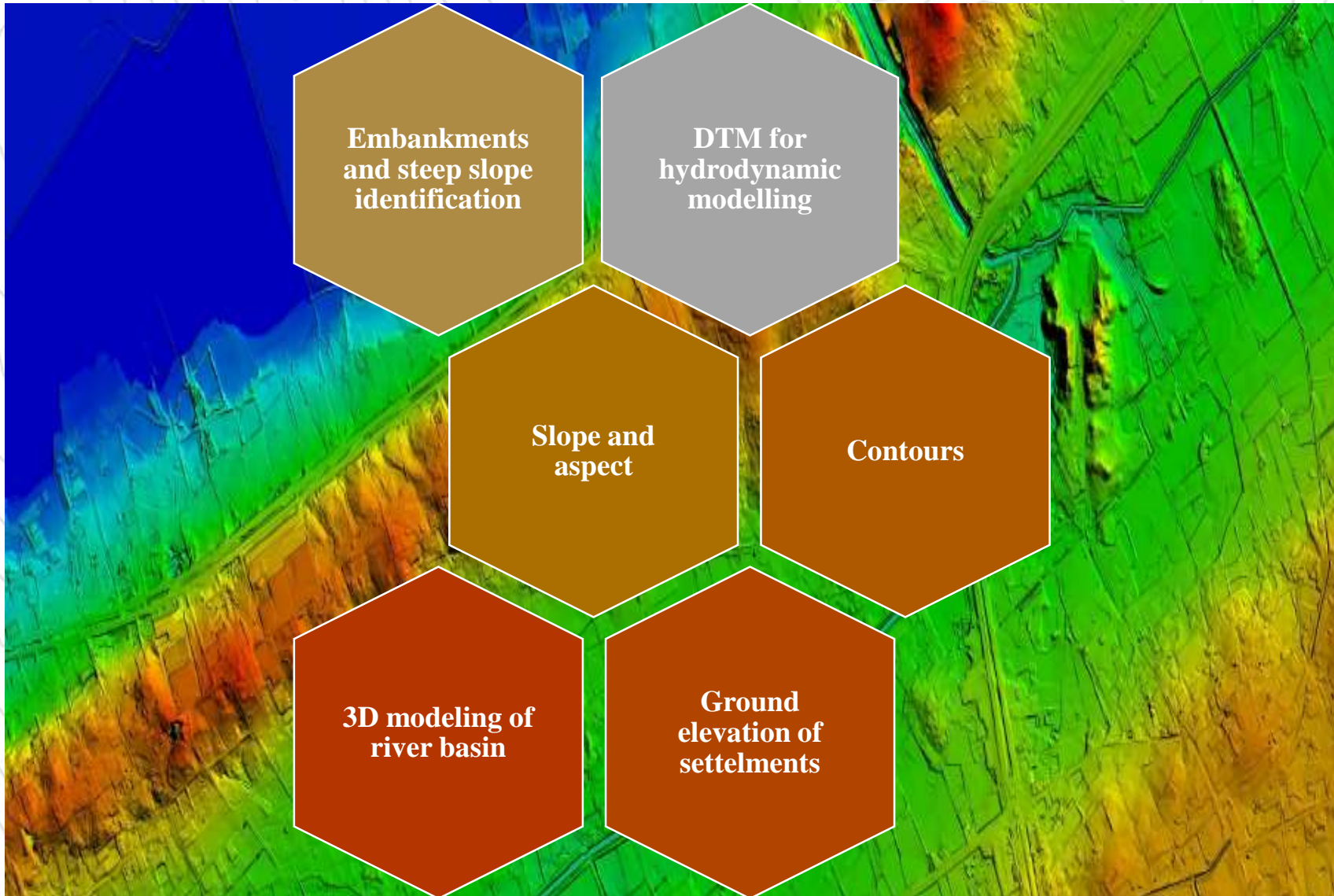
Forecasting severity  
of the incident



# High resolution satellite data



# Terrain modeling for disaster mitigation



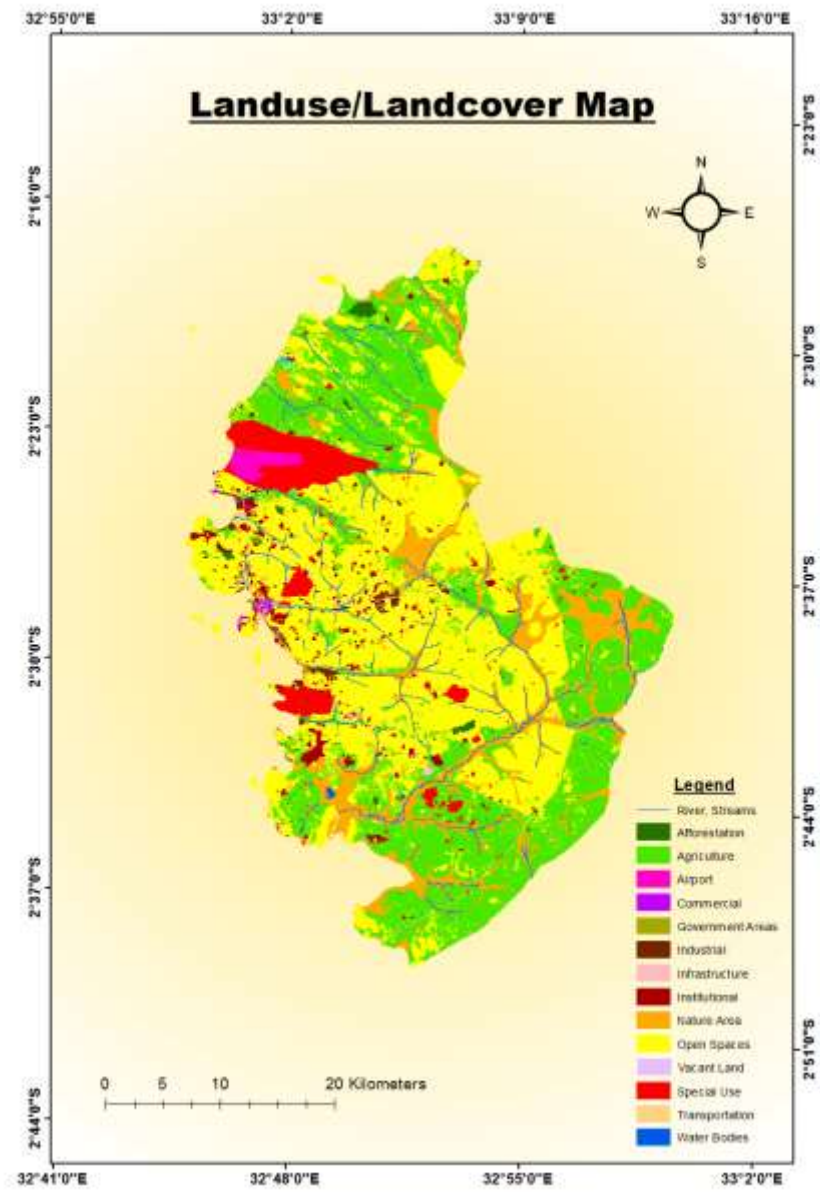
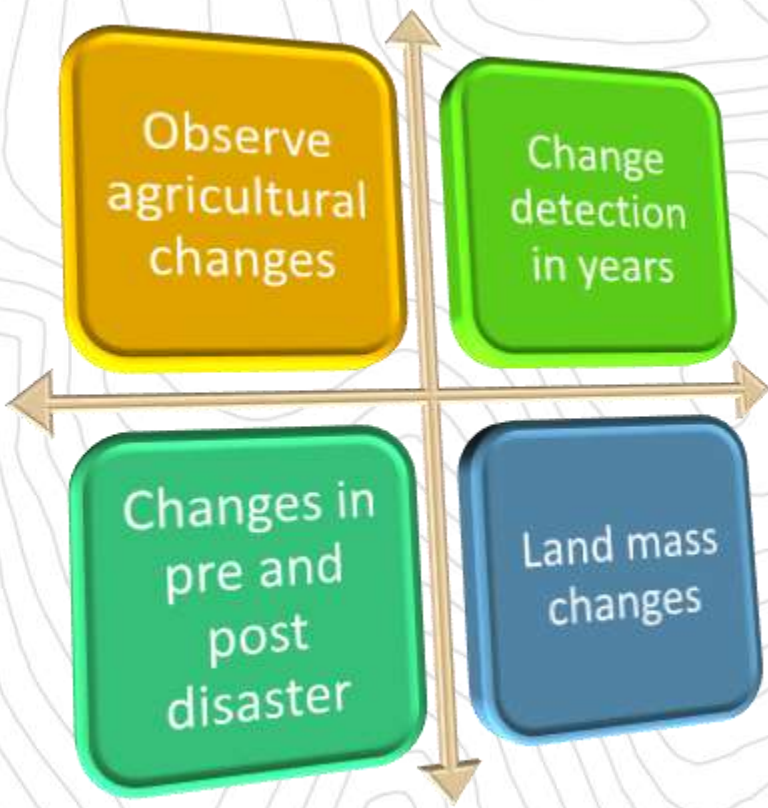


**Storing data related to disaster hazard  
(pre-disaster)**

**Impact analysis and response planning  
(During disaster)**

**Damage assessment and reconstruction  
(Post Disaster)**

# Land Use Land Cover (LULC) maps



# THANK YOU



[www.satpalda.com](http://www.satpalda.com)



[info@satpalda.com](mailto:info@satpalda.com)