



***Geospatial + BIM:
Transforming the Construction and Engineering Industry***

Ted Lamboo

Industrializing *Project Delivery*...

Automation Constructioneering
Collaborative Digital Workflows
Conceptioneering **Comprehensive Status Reviews**
Continuous Surveying of Digital Context
Offsite Manufacturing Components Center
Repeatability ***Digital Twin***

Infrastructure can't become Intelligent/Smart unless it is Digital!!

CityPlanner



2D



ABOUT
THE PROJECT



VIEWPOINTS &
CONTENT





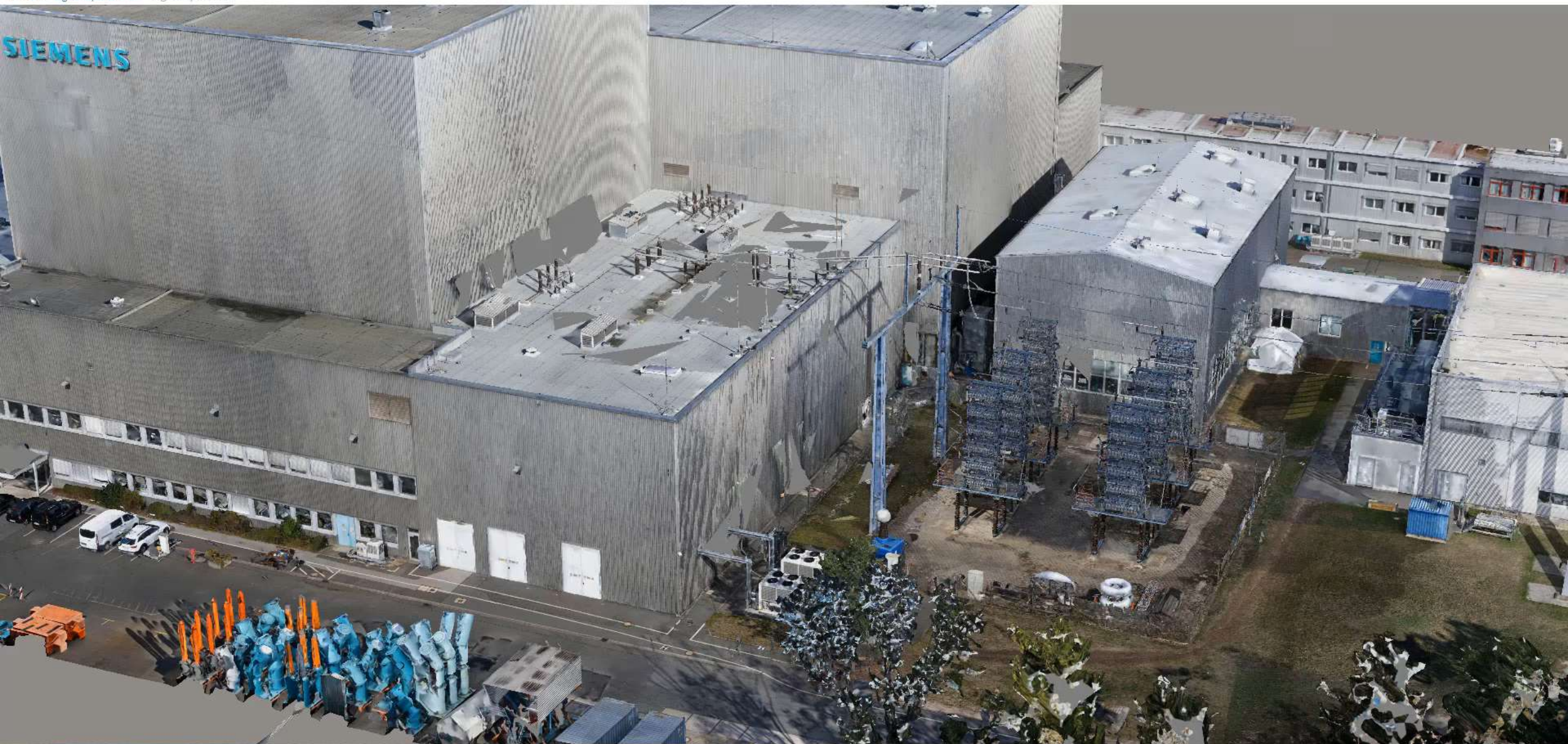
SYNCHRO



May 2018			Jan 2019				Jan 2020				Jan 2021				Jan 2022			
Jul	Oct			Apr	Jul	Oct		Apr	Jul	Oct		Apr	Jul	Oct		Apr	Jul	Oct
wk 37	wk 50		wk 63	wk 76	wk 89	wk 102	wk 115	wk 128	wk 141	wk 155	wk 168	wk 181	wk 194	wk 207	wk 220	wk 233	wk 246	wk 259



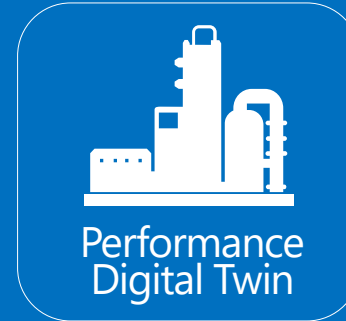




**Immersive
Visibility**

**Continuous and
Comprehensive
Status Review**

**Analytics
Visibility**



Connected Data Environment

**Reality
Modeling**



**Digital
Alignment**

**Change
Synchronization**

Engineering and Construction Automation...

- Must be based on digital representation of existing reality
- All steps of the Infrastructure lifecycle involved
- Infrastructure Asset owner involved before and after the construction
- Digital Twin(ning) is a process, not a one time-event
- Process is as strong as it's weakest link
- Pay-off is biggest when all steps in the process collaborate and benefit:
Exiting situation => Planning => Design => Construction => Hand Over
=> Asset Management
- *Go Digital on your Intelligent Infrastructure!*