

North Carolina Perspective: Community Assessment of NSDI Coverages

Tim Johnson

NC Geographic Information Officer

NC Center for Geographic Information and Analysis





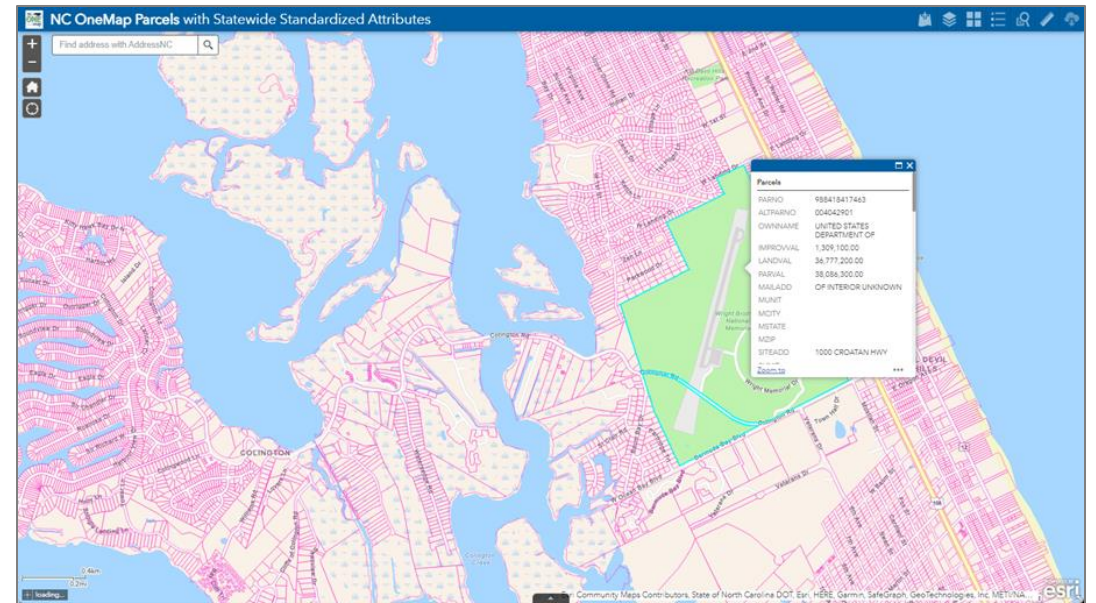
The North Carolina Geographic Information Coordinating Council (GICC)





NC OneMap: A Statewide Community

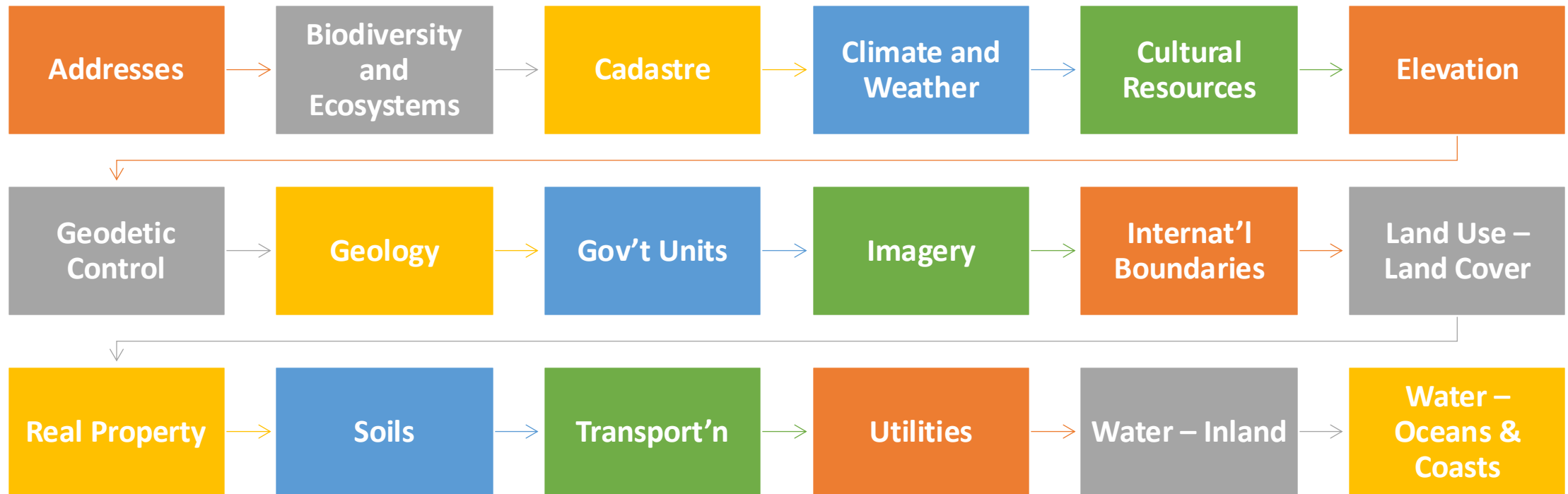
- 20+ years ago NC GICC committed to a vision of:
 - Current, accurate geospatial data
 - Free data discovery and access
 - Data sharing without restriction
 - Data that are reliably maintained, documented through recognized, reliable sources
- Brings together foundational and thematic data from disparate sources into a curated “first-stop shop” for geospatial information
- Data partners cover all levels of government, academia, and private companies



“Seamless” parcels for all 100 NC counties

www.nconemap.gov/pages/parcels

NGDA Data Themes



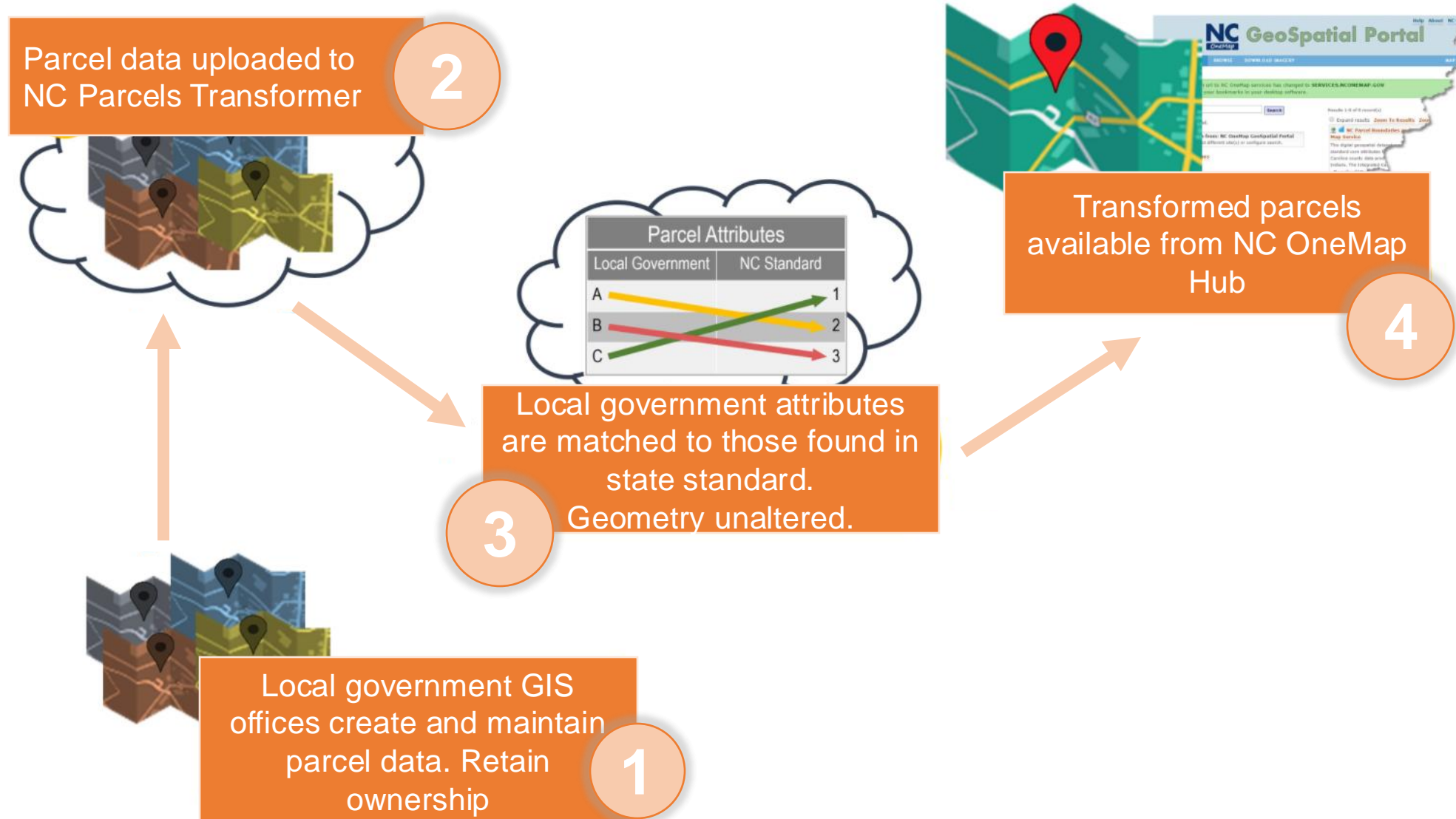


North Carolina Orthoimagery

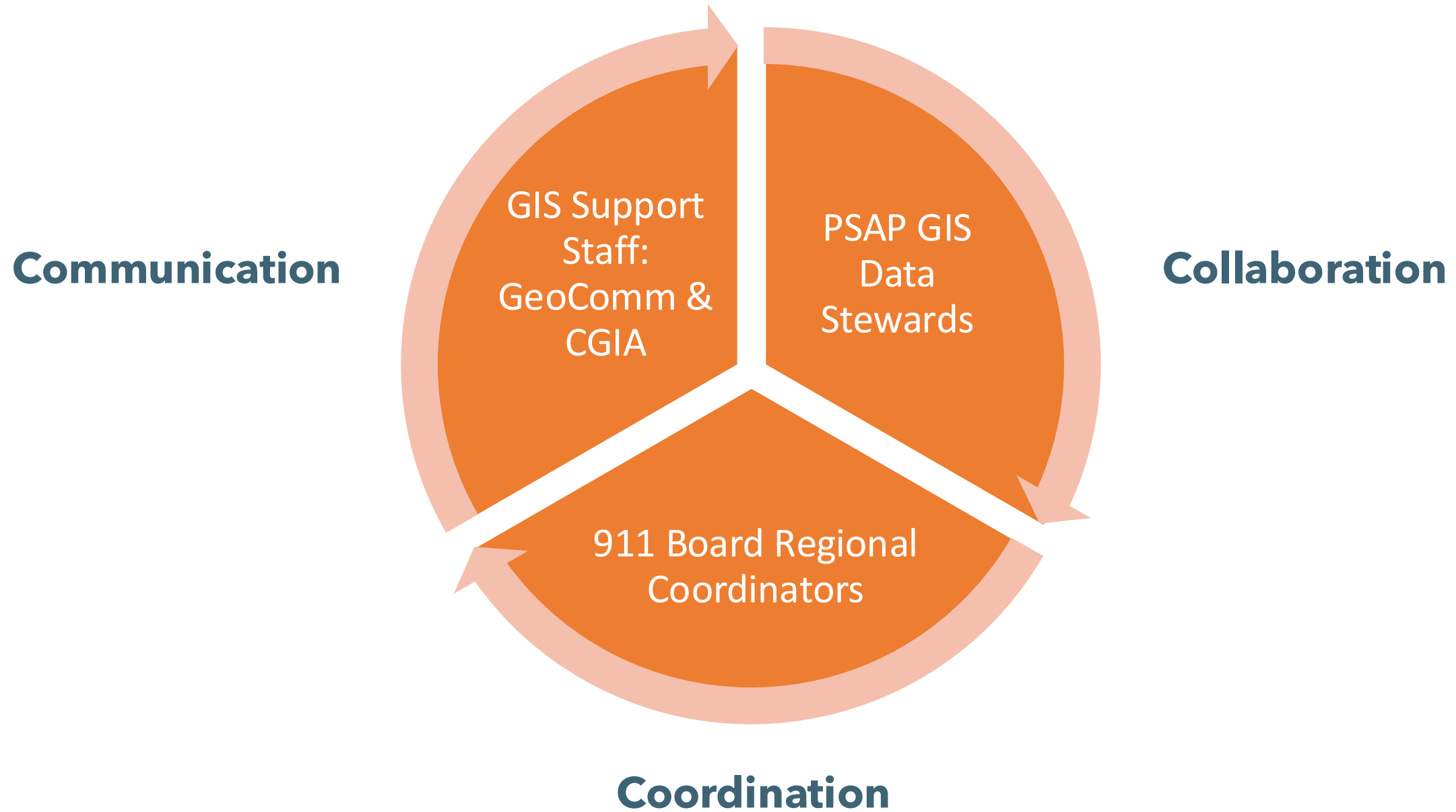


NC Parcels

NC Parcels Workflow

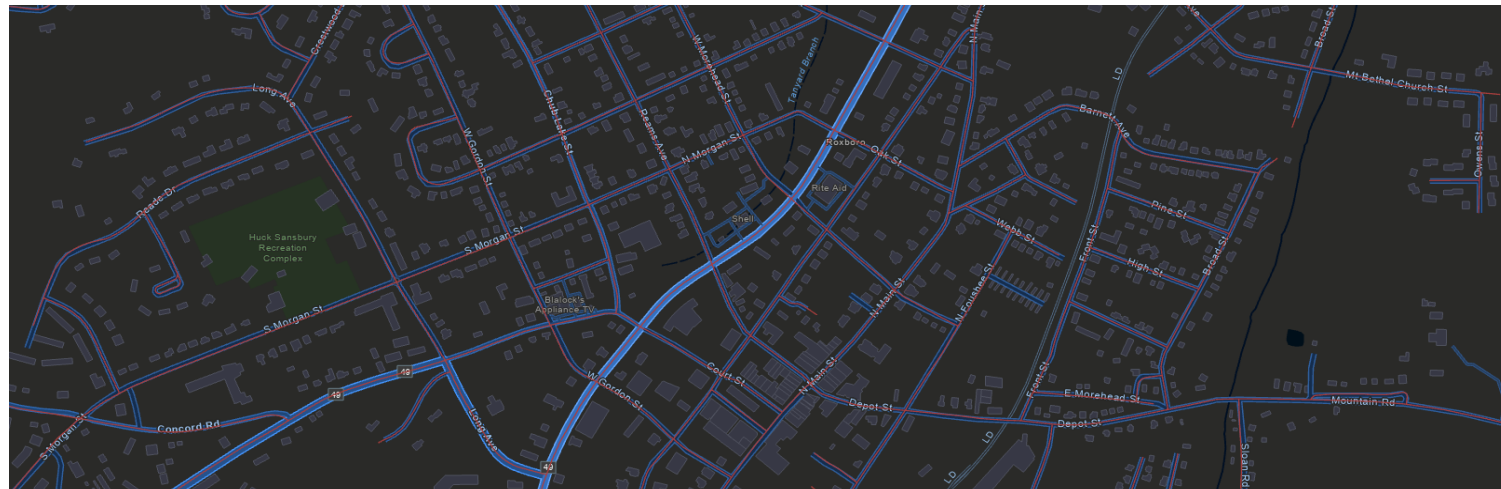


NextGen 911 in North Carolina



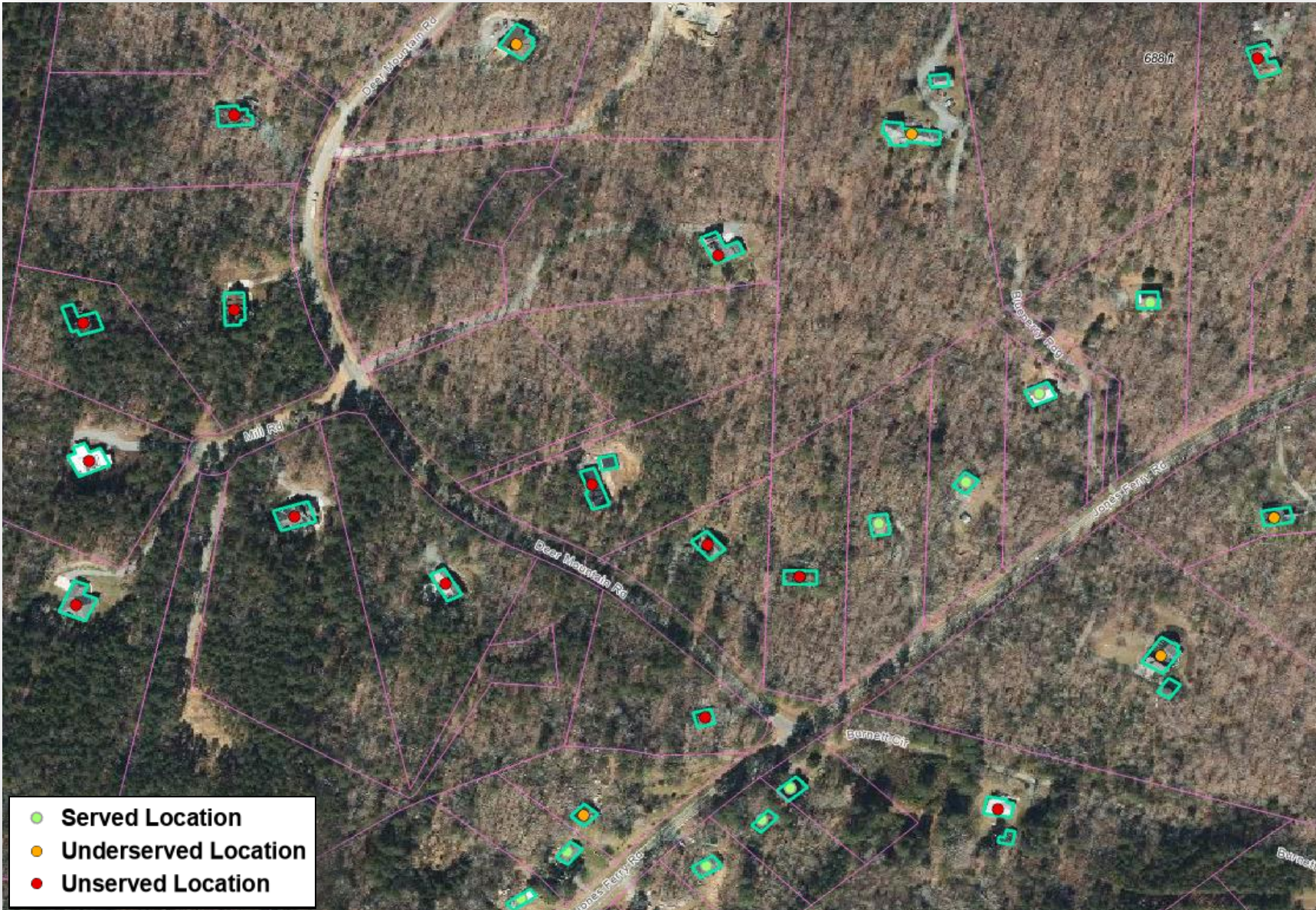
NextGen 911 in North Carolina

- Road Centerlines
- Address Points
- Emergency Services Boundaries (Fire, Law, and EMS)
- PSAP Boundary
- Provisioning Boundary
- ALI Database



Statewide Framework Datasets Use Case

- NC Division of Broadband & Digital Equity leverages orthoimagery, addresses, building footprints, and parcels
- Validates location data used by the FCC
- Maps broadband availability data
- Targets grant funding to expand broadband service across the state



Broadband Availability Map Example

Some Challenges



Need to evaluate legacy FGDC standards to meet current needs across all stakeholders



Funding for sustainability of state SDIs to refresh NSDI



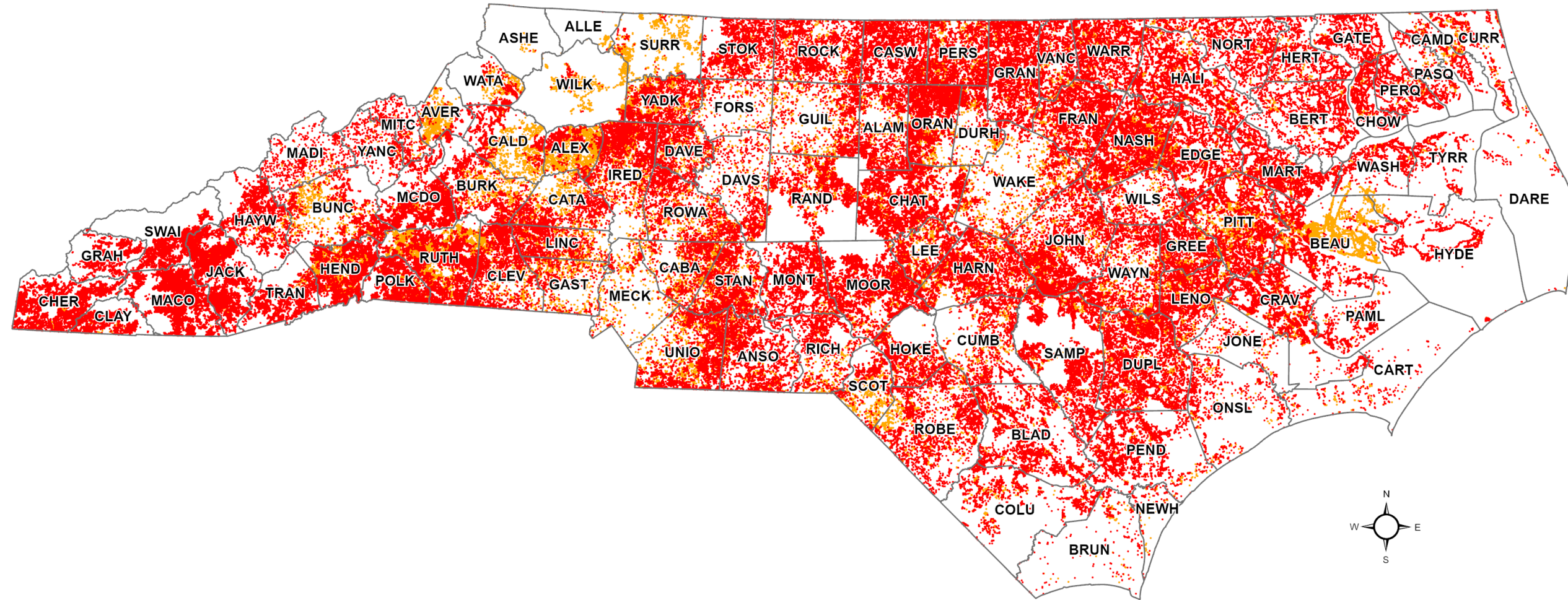
Integrating local data into a national dataset:
Example - local resolution hydrography merged into 3DHP



Roles and responsibilities for each sector

NC Broadband Profile

FCC Broadband Data Collection - Version 2 - Unserved/Underserved - Service as of Dec 2022



- Unserved Broadband Serviceable Locations (Less Than 25mb/s Download and 3mb/s Upload)
 - 376,039 Locations – **Increase of 122,630 from Version 1 to Version 2 – Largest Increase of any State**
- Underserved Broadband Serviceable Locations (Less Than 100mb/s Download and 20mb/s Upload)
 - 127,391 Locations

Tim Johnson

Geographic Information Officer,
State of North Carolina

tim.johnson@nc.gov

<https://www.nconemap.gov/>

<https://it.nc.gov/about/boards-commissions/gicc>

