

# Opportunities for Railway and Metro Sector in India

by Rail Analysis India

22nd August, 2025



# Profile



**Rail Market  
Future Demand**



**Competitive  
Intelligence**



**Supply Chain  
Analysis**



**Product pricing  
insights  
(Local and Global)**

# Key Services

---

## Rail & Metro Market Demand

- **Research on India's** rolling stock, metro, high speed, signaling, electrification potential.
- **Future opportunities in the railway & metro sector:** We help you identify the areas where you get the maximum output for your product and demand assessment to harness the full potential lying in the rail and metro sector.
- **Any major policy introduction or changes:** Changes within the existing policy impacting the business prospects of the products.

## Competitive Intelligence

- **Competitive Intelligence:** Mapping out existing suppliers with their respective product wise market share & product wise competition analysis & SWOT analysis of existing suppliers.
- **Mergers & Acquisitions & Latest Insights:** With a key focus on rail and metro sector, we keep an updated insight into new and potential mergers and JVs. Companies approach us for our expertise for cutting-edge domain knowledge for the rail and metro sector.

# Key Services

---

## Supply Chain & Risk Analysis

- **Product Sourcing and Supply chain analysis in Indian market:** We assist by making the supply chain of your product more robust and help you in product sourcing and supply chain analysis of Railway and Metro Sector in India.
- **Factory visit, Quality checks and audits:** We assist the client in sharing the RFQs with new suppliers and assist them in becoming a quality supplier.
- **Supply market intelligence:** Research on the capacity of suppliers for the machines parts.

## Pricing Insights (Local & Imports)

- **Local product pricing and import / export levels of various products:** We analyze the latest pricing of products along with %age imports or indigenized.
- **Production set up for Railways:** All the requirements for company and factory set up.
- **Make in India ( Rail Sector ) Policy:** Research on the Make in India policy of manufacturing in India and also the Government policy to encourage manufacturing in India.

# Expertise in Market Research

We have domain expertise in the following areas and provide regular insights focused on the railway and metro sector of India.

## Rolling Stock

- LHB
- EMU
- Metro
- Wagons
- Locomotives
- Vande Bharat
- HSR & Hydrogen Technology

## Infrastructure

- Track Fastening Systems
- New Lines
- Civil Work
- Soil Stabilisation
- Depot Insights
- Track Machines
- Fleet Management

## Energy Efficiency

- Electric Locomotive
- Traction & Propulsion
- Solar Energy
- Variable Drives
- Regenerative Braking System
- Power Supply Equipment
- Green Logistics

## Stations









- Station Redevelopment
- Metro Stations
- Modal Hubs
- Platform Screen Doors
- Passenger Ticketing
- ECS & BMS Systems
- Tunneling Ventilation Systems

## Interiors & Exteriors of Coaches

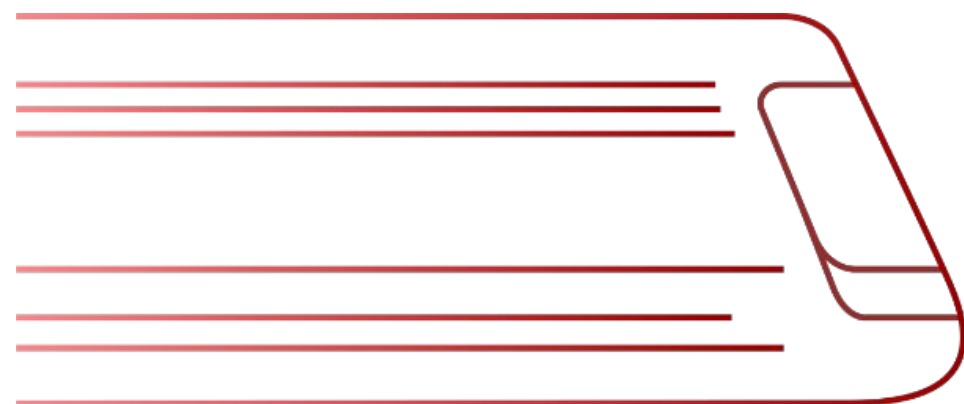
- Seating Systems
- FRP (Composite Markets)
- Lighting of Coaches
- Gangways
- Doors
- Fire Systems
- Underframe Engineering

# Media Presence

Our Media Presence in the Rail and Metro market of India:

Media	Rail Analysis Channels
	<ul style="list-style-type: none"> <li>• Rail Analysis Daily News</li> </ul>
	<ul style="list-style-type: none"> <li>• Print Magazine</li> </ul>
	<ul style="list-style-type: none"> <li>• Newsletter</li> </ul>
	<ul style="list-style-type: none"> <li>• Youtube channel</li> </ul>
	<ul style="list-style-type: none"> <li>• LinkedIn</li> </ul>
	<ul style="list-style-type: none"> <li>• X (formerly Twitter)</li> </ul>
	<ul style="list-style-type: none"> <li>• Instagram</li> </ul>
	<ul style="list-style-type: none"> <li>• Facebook</li> </ul>

Followers or Members
<ul style="list-style-type: none"> <li>• 30,000+ readers</li> </ul>
<ul style="list-style-type: none"> <li>• 4,000+ Print readers</li> </ul>
<ul style="list-style-type: none"> <li>• 45,000+ Digital readers</li> </ul>
<ul style="list-style-type: none"> <li>• 45,000+ Recipients</li> </ul>
<ul style="list-style-type: none"> <li>• 1,500+ Subscribers</li> </ul>
<ul style="list-style-type: none"> <li>• 43,000+ followers</li> </ul>
<ul style="list-style-type: none"> <li>• 36,000+ group members</li> </ul>
<ul style="list-style-type: none"> <li>• 36,000+ followers</li> </ul>
<ul style="list-style-type: none"> <li>• 1000+ followers</li> </ul>
<ul style="list-style-type: none"> <li>• 23,000+ followers</li> </ul>



# Rail Market Research (India)

## Projects Done

We assist by making the supply chain of your product more robust and help you in product sourcing and supply chain analysis of Railway and Metro Sector in India.

Projects	Profile	Expertise	Feedback
<b>Source Metro Rail Components</b>	Rolling Stock Manufacturer from Europe	<ul style="list-style-type: none"> <li>- Market Analysis of Rail Components</li> <li>- Data Collection and Assessment</li> <li>- Product Sourcing and Supply chain analysis in Indian market</li> </ul>	Client is sourcing parts from India.
<b>Future Demand Forecasting</b>	Rolling Stock Component Supplier	<ul style="list-style-type: none"> <li>- Future Opportunities in Rail and Metro Sector</li> <li>- Market trend in the supplies of rail and metro components</li> <li>- Rail &amp; Metro component level market research</li> </ul>	They awarded us more projects.
<b>Diversification to Railways</b>	Manufacturer of auto components	<ul style="list-style-type: none"> <li>- Business Expansion to Railways and Metros</li> <li>- Product Sourcing and Supply Chain analysis in Indian market</li> <li>- Market research in rail and metro compon</li> </ul>	They are now into the railway sector.
<b>Metro Coach Requirements</b>	Manufacturer of metro components.	<ul style="list-style-type: none"> <li>- Market Research</li> <li>- Go-to-market strategies</li> <li>- Latest Insights and patterns</li> </ul>	They have set up a factory in India now.

# Our Clients

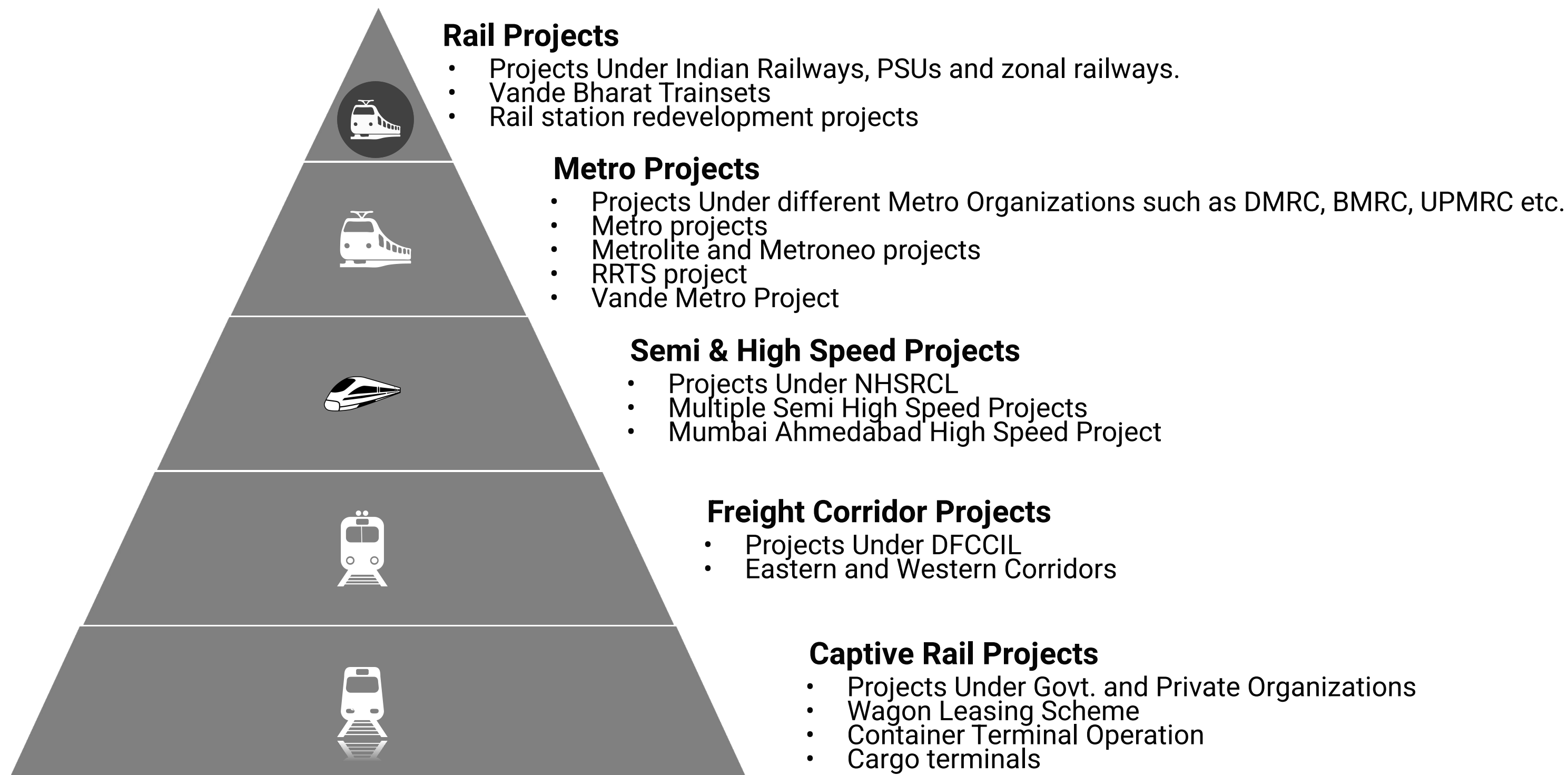
Rail Analysis India supports clients in the Rail and Metro sectors with market research, survey and industry insights.

**We have advised Key Rail & Metro Industry Companies**

- Metro coach OEMs*
- Rolling stock suppliers*
- Gangway parts supplier*
- Fabrication Suppliers*
- Fire systems manufacturer*
- Embassies & Foreign missions*
- Track components suppliers*
- Tunneling systems*

## Sector overview

Indian market has a variety of fast moving projects with multiple sub-areas in the the railway and metro sector of India. The projects in India can be defined in the various categories:



# Unveiling Market Research Reports

presented by



# Reports

---

- What is the future market potential in India?
- Latest Policies and Insights?
- New Technologies in Rolling stock in India?
- Market Collaborations?
- How to Invest for the future?

# Industry Market Research Reports



**Rail Analysis Indian Rail Rolling Stock Report**

**2025-2030**



**Rail Analysis Indian Transit Rolling Stock Report**

**2025-2030**



**Rail Analysis Indian Platform Screen Doors (PSDs) Report**

**2025-2030**

# Rail Report- Rolling Stock

## *Railway Rolling Stock Report*

**2025-2030**



### Key Customers:

- *Major components manufacturers in India*
- *Rolling stock parts manufacturers based out of European countries, India and so on*
- *Conglomerates in India looking to diversify to Rail sector*

## Railways: Rolling Stock In India

Rolling Stock	Private	Government PSUs
Locomotives	Alstom   Wabtec   Siemens	CLW   BLW   PLW   Dankuni
Passenger Coaches	-	ICF   RCF   MCF
Vande Bharat Trainsets	RVNL-TMH   Titagarh Rail Systems- BHEL	ICF   RCF   MCF   BEML
Amrit Bharat Coaches	-	ICF   RCF   MCF
High speed trains	-	ICF - BEML   NHSRCL
Wagons	Titagarh Systems   Texmaco Rail   Hindusthan Engineering & Industries Limited   Modern Industries   Jupiter Wagons Limited & Others	Braithwaite & Co. Limited   Sail-Rites Bengal Wagon Industry Private Limited & Others

### Notes:

- Škoda has signed MoU with Tata Autocomp for railway components etc.
- Texmaco & Nevomo has formed a joint venture to integrate Magrail Technology in the Indian railway Industry.
- BEML and Malaysian SMH Rails signs agreement for rolling stock supply and maintenance.

## Mergers, Acquisitions and Joint ventures

In the railway industry, firms strategically engage in Mergers, Acquisitions and Joint Ventures as a way of expanding their market share and company reach. Some of the key mergers, acquisitions and partnerships in the railway sector are:

Year	Company 1	Type	Company 2	Product
2024	Amber Enterprises	Joint Venture	Yujin Machinery	Rolling stock components
2024	Sona Comstar	Acquisition	Escorts Kubota	Rolling stock components
2024	Texmaco Rail and Engineering	Acquisition	Jindal Rail Infra	Rolling Stock
2024	Jupiter Wagons	Acquisition	Bonatrans India	Wheel solutions
2024	BEML	Partnership	SMH	Rolling Stock
2025	Texmaco Rail & Engineering Ltd.	MoU	Nevomo	Rail Technology
2025	Wabtec Corporation	Acquisition	Dellner Coupler	Couplers
2025	Wabtec Corporation	Acquisition	Frauscher Sensor Technology Group	Train Detection Solutions
2025	Tata AutoComp	Joint Venture	Skoda Group	Rolling Stock

## Other Types of Engagements

These are the engagements possible between private companies in India

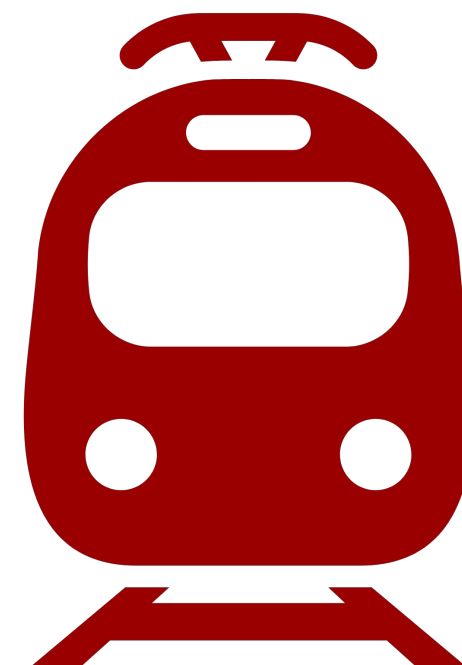


Consortium	Technology Transfer	Direct Sale	Indirect Sale
<p>A consortium led by BHEL and Titagarh signed a contract to deliver 80 Vande Bharat trains.</p>	<p>Renmakch India did a Technology Transfer for Shunters with NITEQ from Netherlands.</p>	<p>Companies from Europe have been supplying wheels for LHB, Locomotives and Vande Bharat Train sets.</p>	<p>Parts of Doors, Interiors of coaches are exported in SKD or CKD condition and then the Indian company does the local installation and maintenance.</p>

# Transit Report- Rolling Stock

## *Transit Rolling Stock Report*

**2025-2030**



### Key Customers:

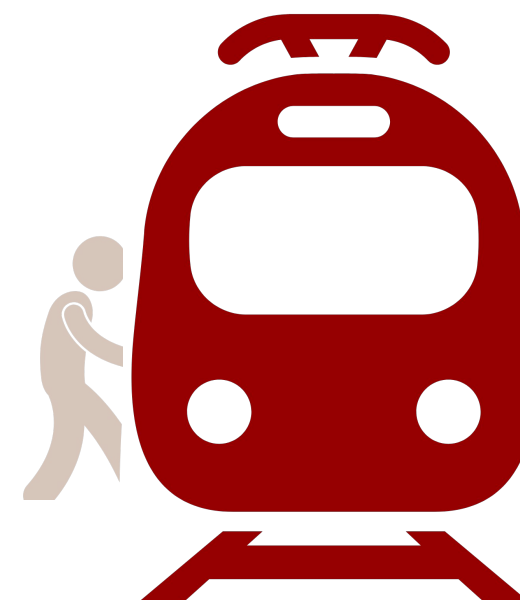
- *Major OEM manufacturing Metro Coaches*
- *Metro components manufacturers based out of European countries, India and so on*
- *Conglomerates in India looking to diversify to Metro sector*



# Platform Screen Doors (PSDs) Report

## *Rail Analysis Indian Platform Screen Doors (PSDs) Report*

**2025-2030**



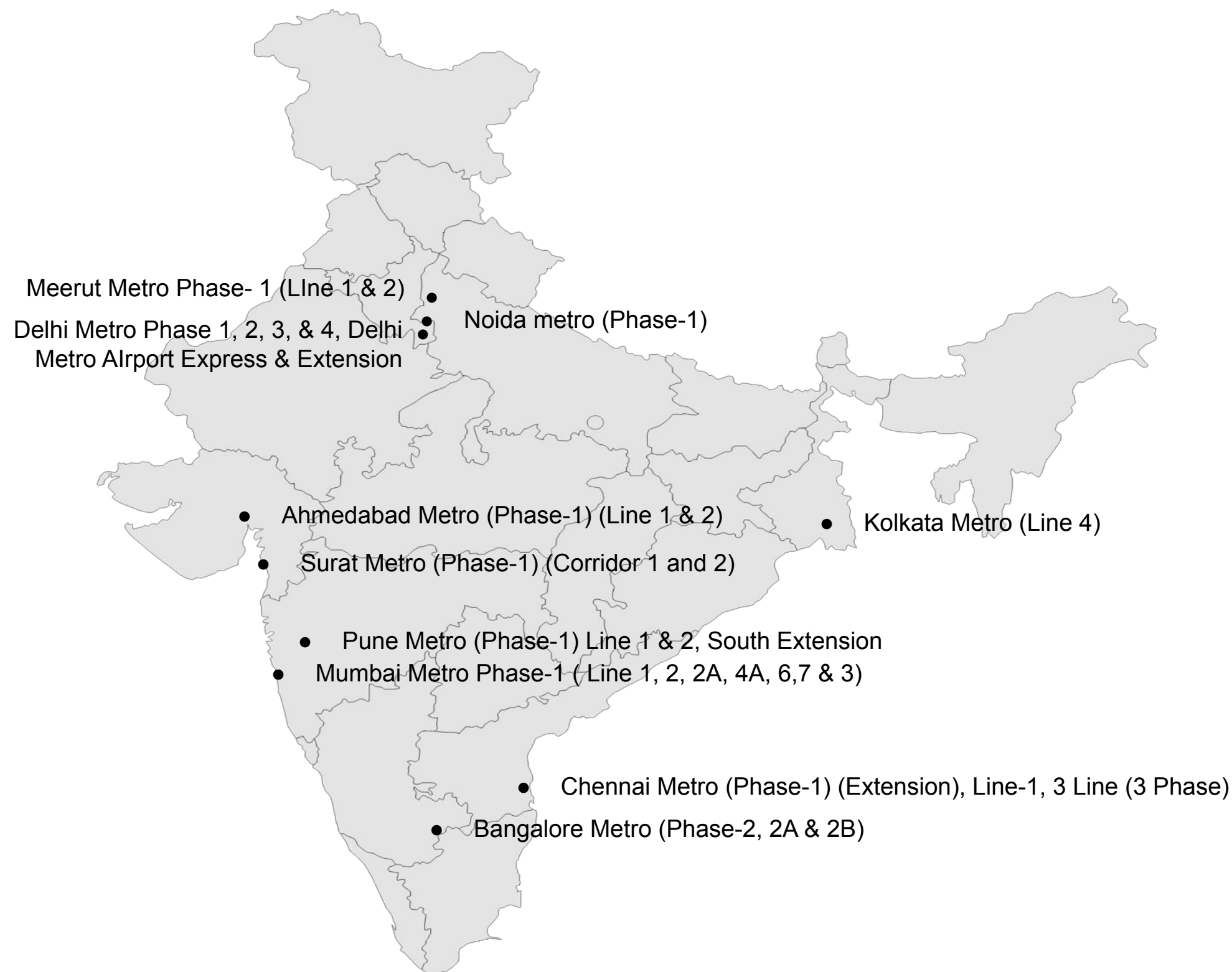
### Key Customers:

- *Major OEM manufacturing Platform Screen Doors System*
- *Platform Screen Doors manufacturers based out of European countries, India and so on*
- *Conglomerates in India looking to diversify to manufacturing Platform Screen Doors*

# Projects with Installations in India

India's metro rail network covered over **~1000 km** in 23 cities as of May 2025, an increase from the **~229 km** it covered in 5 cities in 2014.

By 2026, the is expected to span **~24 cities** and cover **~1700 kilometres**, which will aid India's endeavours to improve urban transportation.



# Additional Content

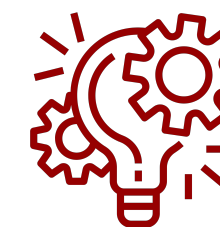
---



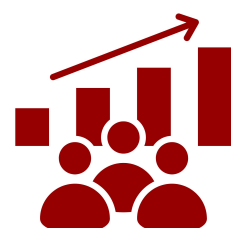
Rolling Stock  
Types



Mergers,  
Acquisitions and  
Partnerships



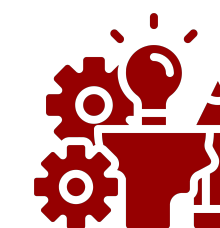
Disruptive  
innovation in the  
Industry



Growth strategy of  
leading players



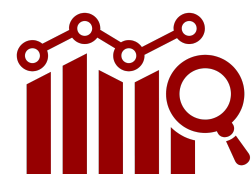
Future Contracts  
Expected



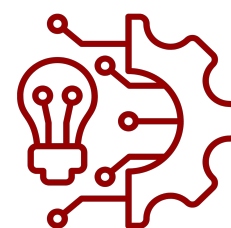
OEMs Overview

# Additional Content

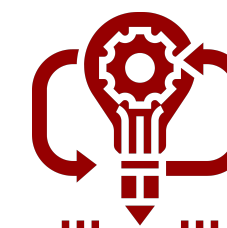
---



Porter's Five Forces Analysis



Technological Developments



New developments



Significant Contracts



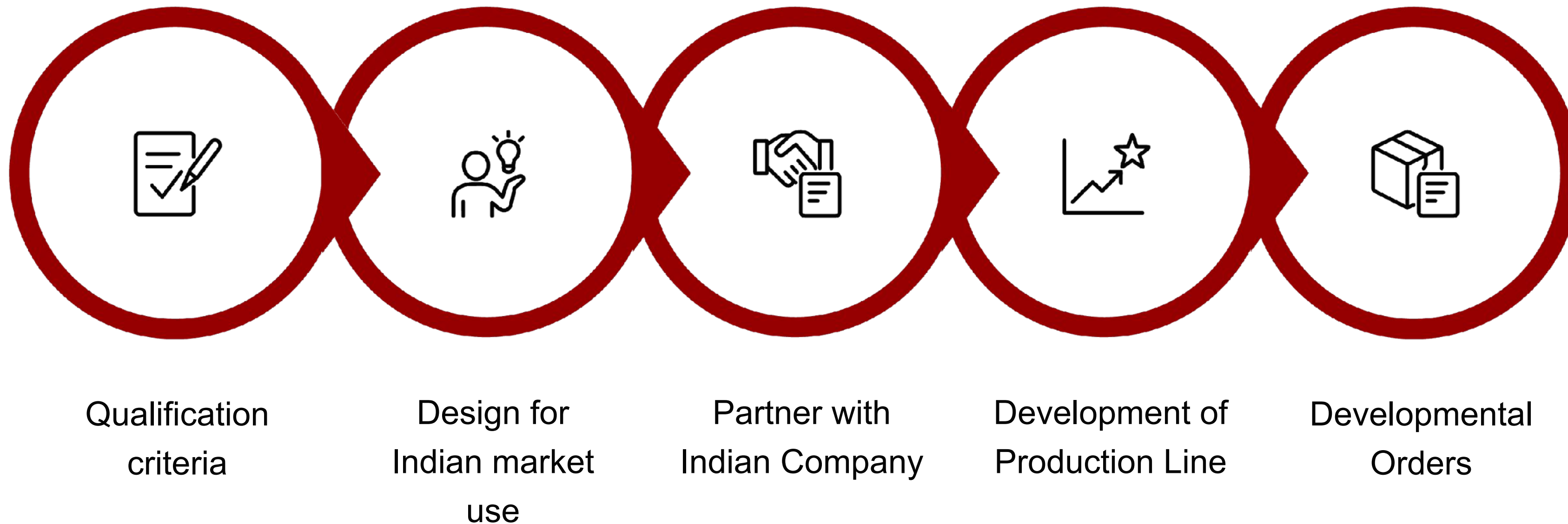
Market Analysis



Industry Insights

## Mode of entering the market

The companies can focus on Indian market via these possibilities:



*Email me at [reports@railanalysis.com](mailto:reports@railanalysis.com) for more details.*

*Thank you once again!*

*presented by*

